



310 Madison St
Madison, TN 37115
615.865.6062

www.jarvisigns.com

Customer:
CULTURE CLUB
1212 MARTIN STREET
NASHVILLE, TN

File Location:
C\CULTURE CLUB\CULTURE CLUB
SIGNAGE OPTIONS.AI

Sign Type:
ENTRY 1

Drawn By: Project Manager
AJS

PAGE #
SG.1

Original Date:	Revision	Rev #
01/19/26		

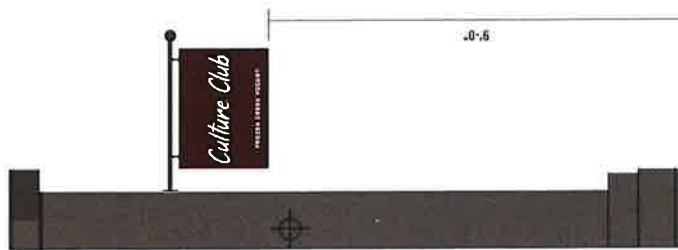
DISCLAIMER: It is the customer's responsibility to verify all dimensions, materials, hardware, and any other details before production. Jarvis Signs is not responsible for any errors or omissions in this drawing. The customer agrees to hold Jarvis Signs harmless for any errors or omissions in this drawing.

Production will proceed upon receipt of your signed and proof approval. All work is guaranteed to be free of defects. Jarvis Signs is not responsible for any errors or omissions in this drawing. The customer agrees to hold Jarvis Signs harmless for any errors or omissions in this drawing. Any corrections made after production begins will be subject to availability. Colors will appear differently from one computer monitor to another. The color is the customer's responsibility to verify. Actual color may vary slightly from the color shown on the computer monitor.

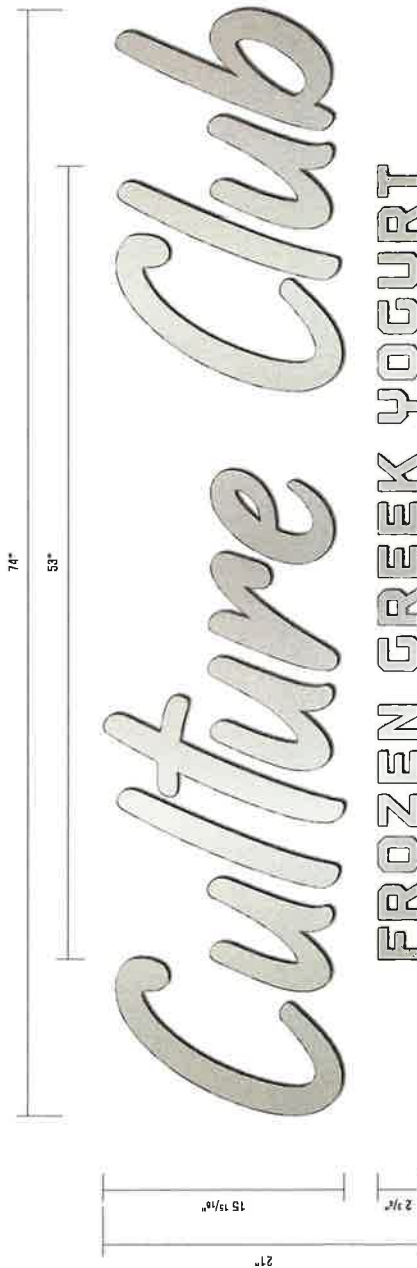
19'-3"



1 ENTRY ELEVATION
SCALE: 3/8" = 1'-0"

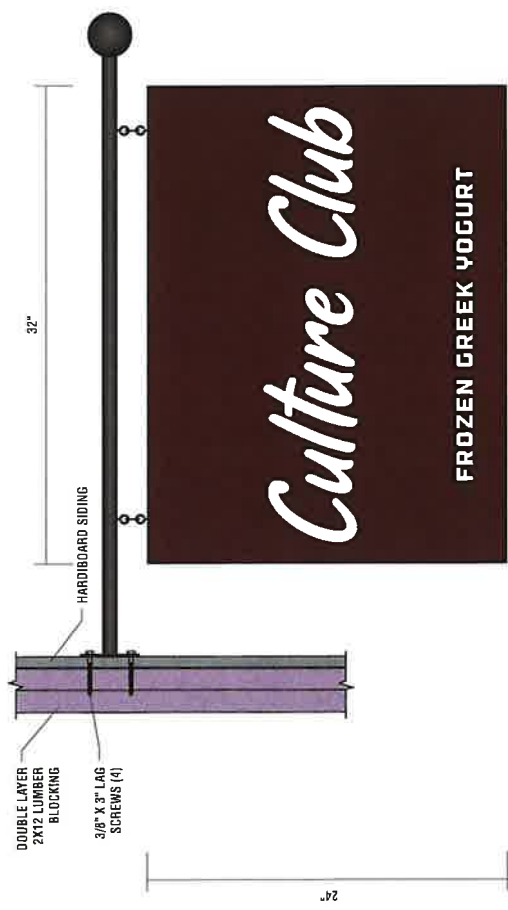


2 COLUMN SIDE VIEW
SCALE: 3/8" = 1'-0"



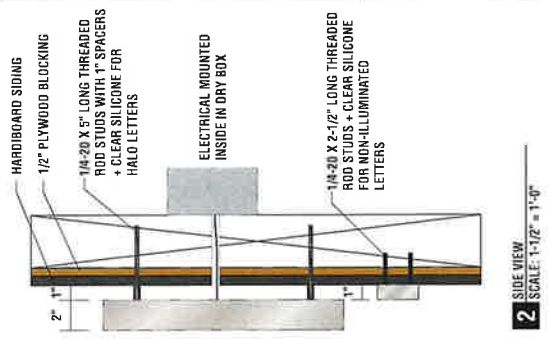
1 FRONT VIEW - BUILDING SIGN
SCALE: 1/12" = 1'-0"

2" DEEP HALO ILLUMINATED CHANNEL LETTERS "Culture Club" POLISHED STAINLESS FINISH WITH 3000K LIGHTS. "FROZEN GREEK YOGURT" TO BE 1" DEEP FABRICATED NON-ILLUMINATED LETTERS WITH POLISHED STAINLESS FINISH



3 FRONT VIEW - BLADE SIGN
SCALE: 1/12" = 1'-0"

1" DEEP BLADE SIGN. 1" ALUMINUM SQUARE TUBE FRAME WITH .080 FACES. 2 EYE BOLTS IN TOP WITH NUTS WELDED INSIDE TUBE FRAME. PAINT TO MATCH PWS4102C WITH WHITE VINYL. ALUMINUM MOUNTING BRACKET. ROUND TUBE WITH BALL FINIAL. BRACKET PAINTED BLACK.



JARVIS SIGNS
DESIGN • BUILD • INSTALL • SERVICE

310 Madison St
Madison, TN 37115
615.865.6062
www.jarvisigns.com

Customer:
CULTURE CLUB
1212 MARTIN STREET
NASHVILLE, TN

File Location:
CULTURE CLUB CULTURE CLUB
SIGNAGE OPTIONS AI

Sign Type:
ENTRY 1

Drawn By: Project Manager:
AJS AJS

PAGE #
SG.1

Original Date:	Revision Date:	Rev #
01/19/26		

DISCLAIMERS:
Jarvis Signs is not responsible for the accuracy of the information provided in this document. Jarvis Signs and its employees are not responsible for the accuracy of the information provided in this document. Jarvis Signs and its employees are not responsible for the accuracy of the information provided in this document. Jarvis Signs and its employees are not responsible for the accuracy of the information provided in this document.

Proclamation: Jarvis Signs is not responsible for the accuracy of the information provided in this document. Jarvis Signs and its employees are not responsible for the accuracy of the information provided in this document. Jarvis Signs and its employees are not responsible for the accuracy of the information provided in this document. Jarvis Signs and its employees are not responsible for the accuracy of the information provided in this document.



310 Madison St
Madison, TN 37115



615.865.6062



www.jarvisigns.com

Customer:

CULTURE CLUB
1212 MARTIN STREET
MASHVILLE, TN

File Location:

C\CULTURE CLUB\CULTURE CLUB
SIGNAGE OPTIONS.AI

Sign Type:

INTERIOR

Drawn By:

AJS

Project Manager:

AJS

PAGE #

SG.3

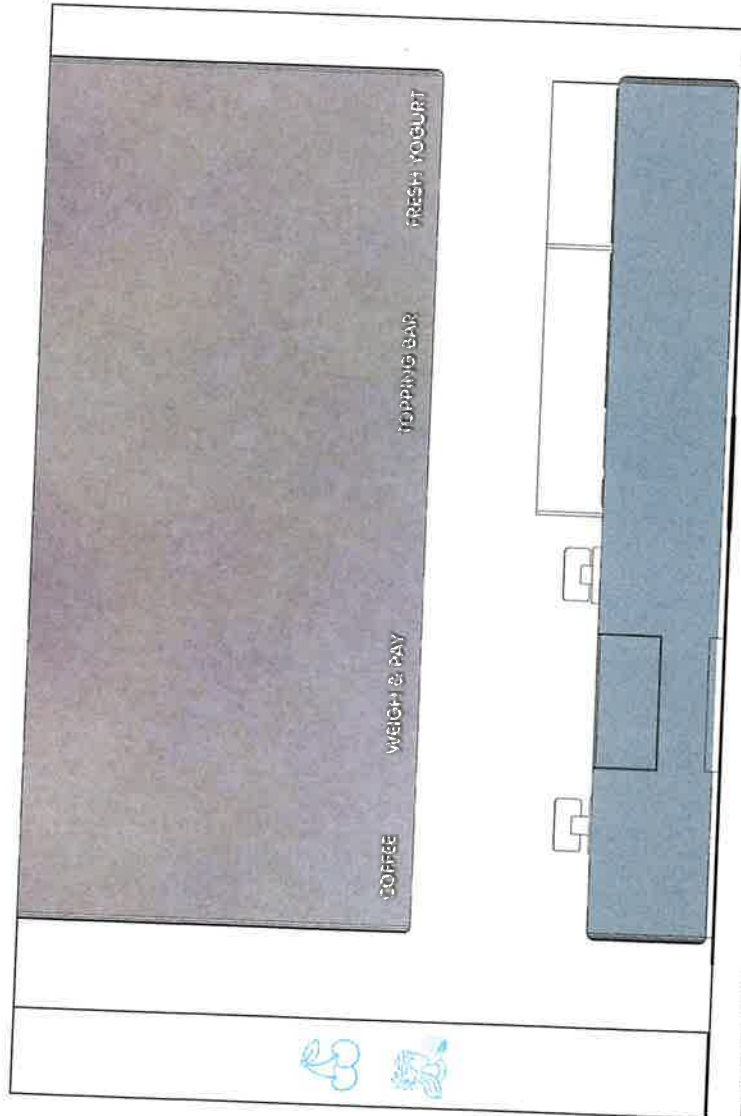
Original Date:

01/19/26

Revision Date:

Rev #

DISCLAIMER: The exclusive liability of Jarvis Signs Inc. shall be limited to the design and production of the signage. Jarvis Signs Inc. shall not be responsible for any other damages, including but not limited to, the cost of materials, labor, or any other expenses incurred by the customer. Jarvis Signs Inc. shall not be responsible for any other damages, including but not limited to, the cost of materials, labor, or any other expenses incurred by the customer.



1 INTERIOR ELEVATION
SCALE: 3/8" = 1'-0"

DISCLAIMER: The exclusive liability of Jarvis Signs Inc. shall be limited to the design and production of the signage. Jarvis Signs Inc. shall not be responsible for any other damages, including but not limited to, the cost of materials, labor, or any other expenses incurred by the customer. Jarvis Signs Inc. shall not be responsible for any other damages, including but not limited to, the cost of materials, labor, or any other expenses incurred by the customer.

PLAN NOTES

1. ALL WORK SHALL BE IN ACCORDANCE WITH THE LATEST EDITIONS OF THE INTERNATIONAL BUILDING CODES (IBC) AND THE INTERNATIONAL MECHANICAL AND ELECTRICAL CODES (IMC).

2. ALL WORK SHALL BE IN ACCORDANCE WITH THE LATEST EDITIONS OF THE NATIONAL ELECTRICAL CODE (NEC) AND THE NATIONAL FIRE ALARM AND SIGNALING CODE (NFPA).

3. ALL WORK SHALL BE IN ACCORDANCE WITH THE LATEST EDITIONS OF THE NATIONAL MECHANICAL CODE (NMC) AND THE NATIONAL PLUMBING CODE (NPC).

4. ALL WORK SHALL BE IN ACCORDANCE WITH THE LATEST EDITIONS OF THE NATIONAL GAS CODE (NGC) AND THE NATIONAL BOILER AND PRESSURE VESSEL CODE (NBPV).

5. ALL WORK SHALL BE IN ACCORDANCE WITH THE LATEST EDITIONS OF THE NATIONAL CONSTRUCTION CODE (NCC) AND THE NATIONAL CONSTRUCTION CODE (NCC).

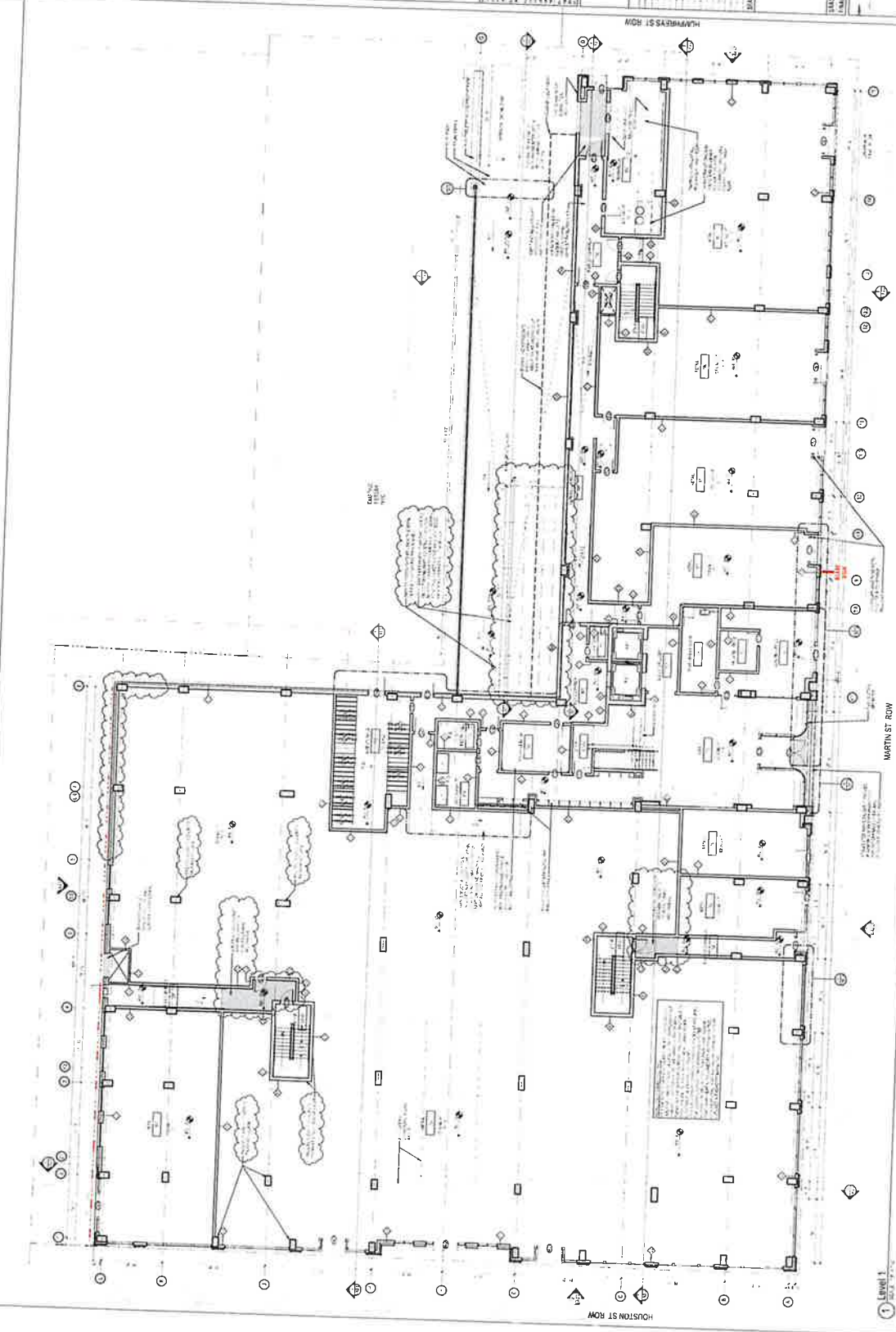
6. ALL WORK SHALL BE IN ACCORDANCE WITH THE LATEST EDITIONS OF THE NATIONAL CONSTRUCTION CODE (NCC) AND THE NATIONAL CONSTRUCTION CODE (NCC).

7. ALL WORK SHALL BE IN ACCORDANCE WITH THE LATEST EDITIONS OF THE NATIONAL CONSTRUCTION CODE (NCC) AND THE NATIONAL CONSTRUCTION CODE (NCC).

8. ALL WORK SHALL BE IN ACCORDANCE WITH THE LATEST EDITIONS OF THE NATIONAL CONSTRUCTION CODE (NCC) AND THE NATIONAL CONSTRUCTION CODE (NCC).

9. ALL WORK SHALL BE IN ACCORDANCE WITH THE LATEST EDITIONS OF THE NATIONAL CONSTRUCTION CODE (NCC) AND THE NATIONAL CONSTRUCTION CODE (NCC).

10. ALL WORK SHALL BE IN ACCORDANCE WITH THE LATEST EDITIONS OF THE NATIONAL CONSTRUCTION CODE (NCC) AND THE NATIONAL CONSTRUCTION CODE (NCC).



PLAN MATERIAL KEY

1. CONCRETE

2. BRICK

3. GLASS

4. METAL

5. WOOD

6. PAINT

7. FINISH

8. ROOFING

9. INSULATION

10. MECHANICAL

11. ELECTRICAL

12. PLUMBING

13. GAS

14. BOILER

15. PRESSURE VESSEL

16. CONSTRUCTION

17. CONSTRUCTION

18. CONSTRUCTION

19. CONSTRUCTION

20. CONSTRUCTION

<p>DEVELOPER</p> <p>AT&T World Service, Inc.</p> <p>11000 West Loop West, Suite 1000</p> <p>West Houston, Texas 77057</p>	<p>ARCHITECT</p> <p>HPA</p> <p>11000 West Loop West, Suite 1000</p> <p>West Houston, Texas 77057</p>	<p>ENGINEER</p> <p>1. CIVIL ENGINEERING ASSOCIATES, INC.</p> <p>2. MECHANICAL ENGINEERING ASSOCIATES, INC.</p> <p>3. ELECTRICAL ENGINEERING ASSOCIATES, INC.</p> <p>4. PLUMBING ENGINEERING ASSOCIATES, INC.</p> <p>5. GAS ENGINEERING ASSOCIATES, INC.</p> <p>6. BOILER ENGINEERING ASSOCIATES, INC.</p> <p>7. PRESSURE VESSEL ENGINEERING ASSOCIATES, INC.</p> <p>8. CONSTRUCTION ENGINEERING ASSOCIATES, INC.</p> <p>9. CONSTRUCTION ENGINEERING ASSOCIATES, INC.</p> <p>10. CONSTRUCTION ENGINEERING ASSOCIATES, INC.</p>	<p>Building A</p> <p>11000 West Loop West, Suite 1000</p> <p>West Houston, Texas 77057</p>	<p>STATE OF TEXAS</p> <p>PLUMBING</p> <p>11000 West Loop West, Suite 1000</p> <p>West Houston, Texas 77057</p>	<p>PLANNING</p> <p>11000 West Loop West, Suite 1000</p> <p>West Houston, Texas 77057</p>
--	---	--	---	---	---

FIRST FLOOR PLAN

A-A1.01