

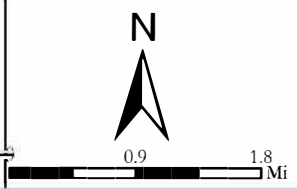
## Hillwood & Wilsonia WIR

2023

Esri, NASA, NGA, USGS, FEMA, Esri Community Maps Contributors, Nashville Davidson Metro Govern, Tennessee SIS GIS, © OpenStreetMap, Microsoft, Esri, HERE, Garmin, SafeGraph, GeoTechnologies, Inc, METI/NASA, USGS, EPA, NPS, US Census Bureau, USDA

Replace 9,400 feet of 6" and 8" cast iron water mains with 8" DIP. Connect new main to 16" water main (City Low) in Harding Pike. Project is estimated to improve flow to 9 black cap hydrants, improve domestic pressure and pressure at the suction side of the Hillwood WPS.

Council Districts 23 & 24.



Coordinate System: NAD 1983 StatePlane Tennessee FIPS 4100 Feet