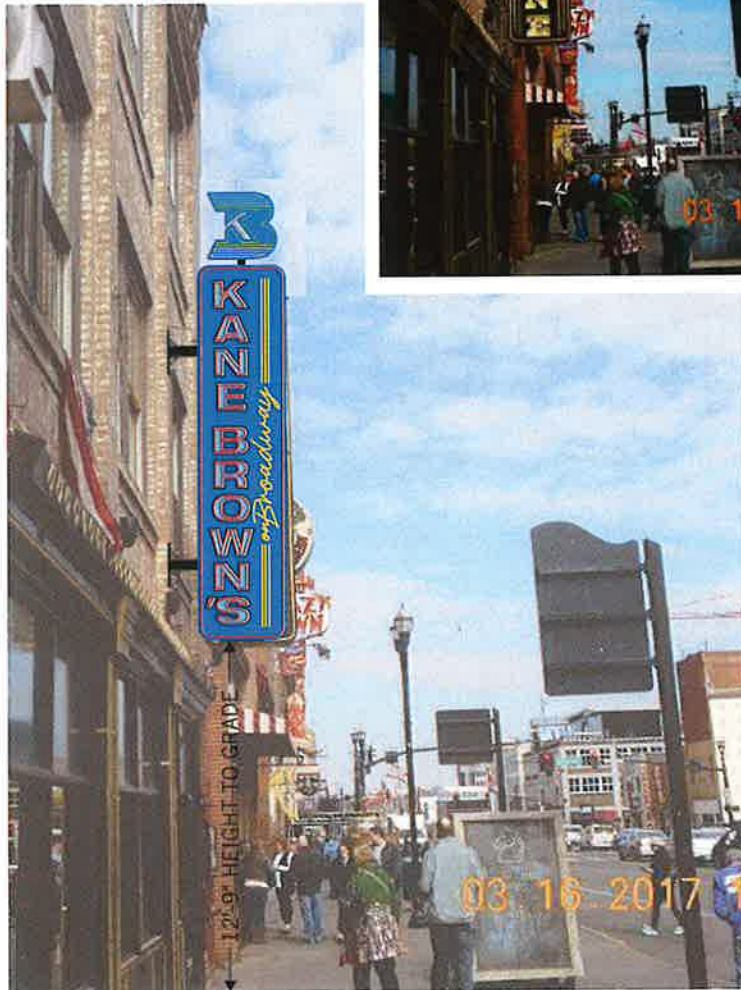




EXISTING SIGN

NEW BLADE SIGN TO REPLACE EXISTING 'VALENTINE' SIGN

46 SQ FT



630 MURFREESBORO PIKE
NASHVILLE, TN 37210

615_255_3463
615_255_3518 FAX

JOSLINSIGN.COM

**KANE BROWN'S
ON BROADWAY**

312 BROADWAY
NASHVILLE, TN 37201

DRW#_ 250789-K60

QUOTE#_ 113155

WK_ORD#_ -----

DESIGNER_ J.MORTON

PROJ_MGR_ K.CLARK

DATE_ 02.04.26

COLORS & FINISHES:

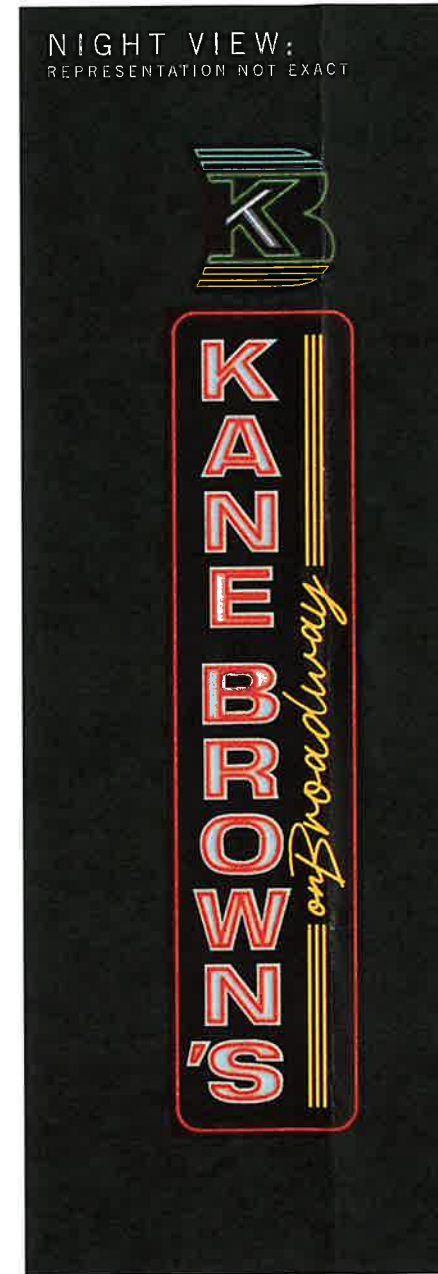
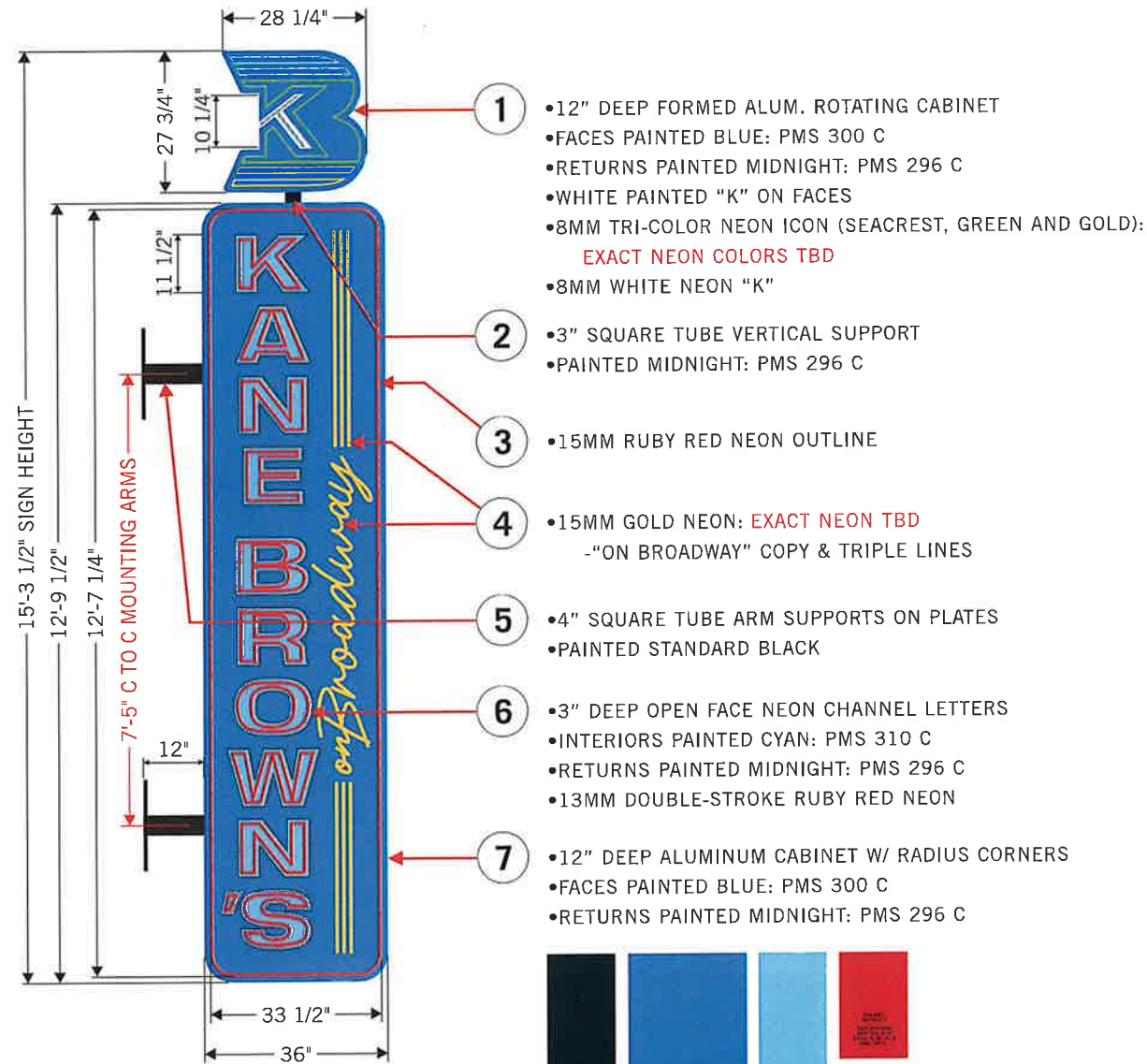
COPYRIGHT © 2025

ALL PRINT AND ELECTRONIC ART REMAINS THE SOLE
COPYRIGHTED PROPERTY OF JOSLIN SIGNS, INC. AND
IS NOT TO BE DISTRIBUTED, COPIED, E-MAILED OR
TRANSFERRED IN ANY WAY WITHOUT PRIOR WRITTEN
RELEASE FROM JOSLIN SIGNS, INC.

NEON BLADE SIGN

SCALE: 3/8" = 1'0"

46 SQ FT



630 MURFREESBORO PIKE
NASHVILLE, TN 37210

615_255_3463
615_255_3518 FAX

JOSLINSIGN.COM

KANE BROWN'S
ON BROADWAY

312 BROADWAY
NASHVILLE, TN 37201

DRW#_ 250789-K60

QUOTE#_ 113155

WK_ORD#_ -----

DESIGNER_ J.MORTON

PROJ_MGR_ K.CLARK

DATE_ 02.04.26

COLORS & FINISHES:

Standard Black	STANDARD BLACK
PMS 300 C	PMS 300 C
PMS 310 C	PMS 310 C
PMS 296 C	PMS 296 C
Standard White	STANDARD WHITE
E-21 Aqua / AR Neon	E-21 AQUA / AR NEON
Green Neon TBD	GREEN NEON TBD
Gold Neon TBD	GOLD NEON TBD
White Neon	WHITE NEON
Ruby Red Neon	RUBY RED NEON

COPYRIGHT © 2025
ALL PRINT AND ELECTRONIC ART REMAINS THE SOLE
COPYRIGHTED PROPERTY OF JOSLIN SIGNS, INC. AND
ARE NOT TO BE DISTRIBUTED, COPIED, REPRODUCED OR
TRANSFERRED IN ANY MANNER WITHOUT PRIOR WRITTEN
RELEASE FROM JOSLIN SIGNS, INC.

NEW BLADE SIGN TO REPLACE EXISTING 'VALENTINE' SIGN

46 SQ FT



630 MURFREESBORO PIKE
NASHVILLE, TN 37210

615_255_3463
615_255_3518 FAX

JOSLINSIGN.COM

KANE BROWN'S ON BROADWAY

312 BROADWAY
NASHVILLE, TN 37201

DRW#_ 250789-K60

QUOTE#_ 113155

WK_ORD#_ ----

DESIGNER_ J.MORTON

PROJ_MGR_ K.CLARK

DATE_ 02.04.26

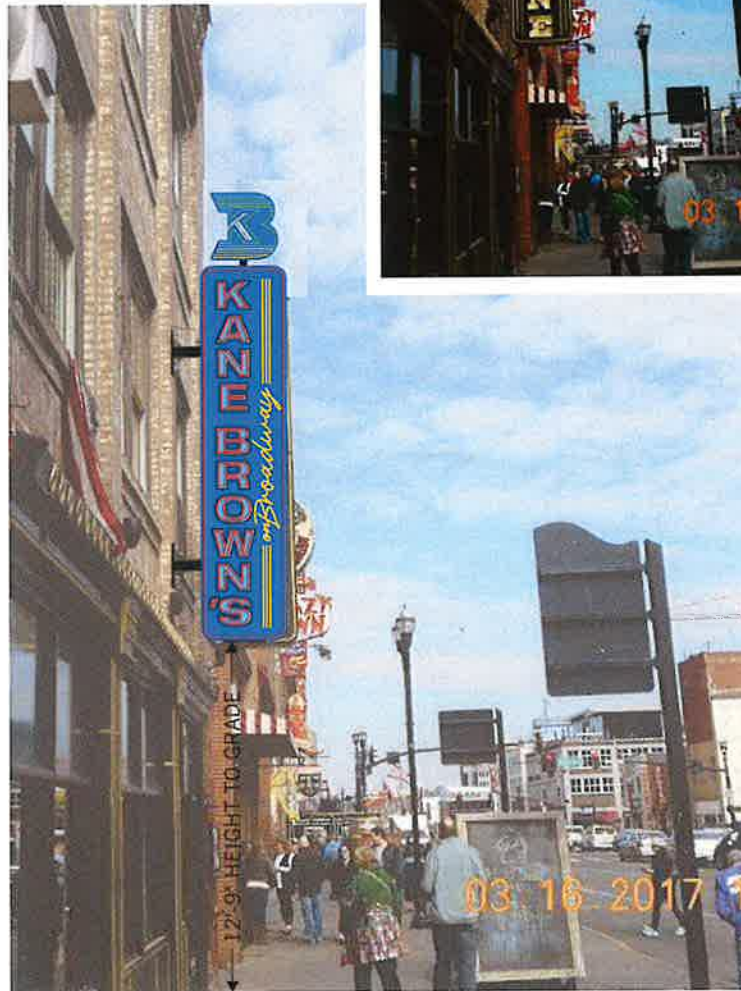
COLORS & FINISHES:

COPYRIGHT © 2025

ALL PRINT AND ELECTRONIC ART REMAINS THE SOLE
COPYRIGHTED PROPERTY OF JOSLIN SIGNS, INC. AND
ARE NOT TO BE DISTRIBUTED, COPIED, E-MAILED OR
TRANSFERRED IN ANY WAY WITHOUT PRIOR WRITTEN
RELEASE FROM JOSLIN SIGNS, INC.



EXISTING SIGN



12'-0" HEIGHT TO GRADE



41' BUILDING FACADE WIDTH

26' DISTANCE TO TIN ROOF SIGN

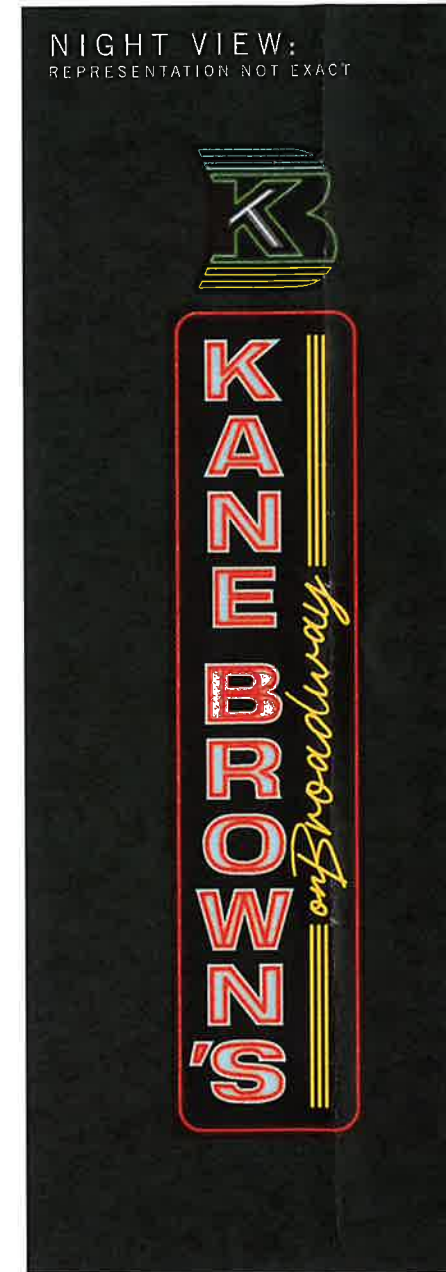
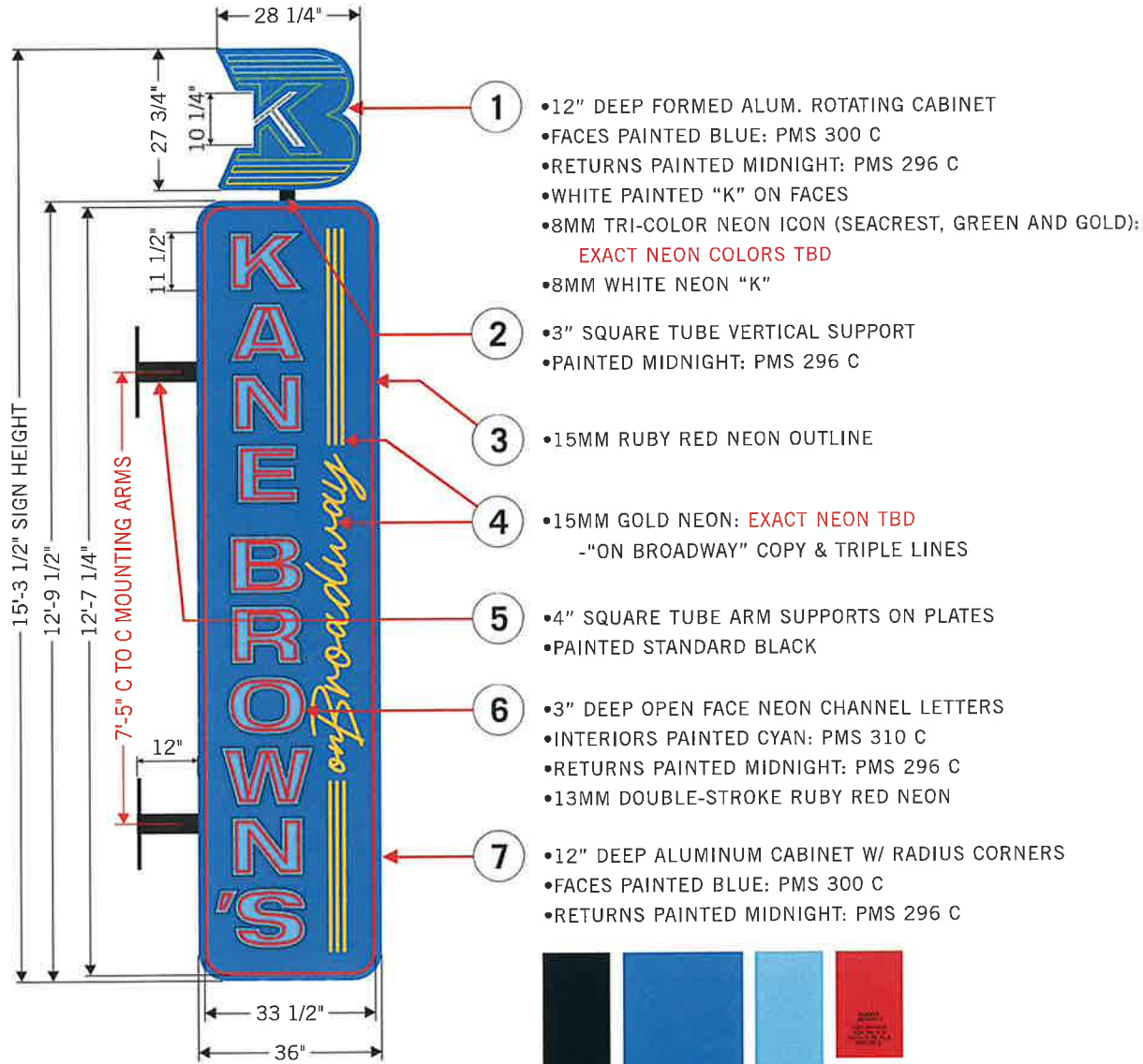
34' DISTANCE TO CANDY KITCHEN SIGN

12'-9" HEIGHT TO GRADE (TBM)

NEON BLADE SIGN

SCALE: 3/8" = 1'0"

46 SQ FT



630 MURFREESBORO PIKE
NASHVILLE, TN 37210

615_255_3463
615_255_3518 FAX

JOSLINSIGN.COM

KANE BROWN'S
ON BROADWAY

312 BROADWAY
NASHVILLE, TN 37201

DRW#_ 250789-K60

QUOTE#_ 113155

WK_ORD#_ -----

DESIGNER_ J.MORTON

PROJ_MGR_ K.CLARK

DATE_ 02.04.26

COLORS & FINISHES:

- STANDARD BLACK
- PMS 300 C
- PMS 310 C
- PMS 296 C
- STANDARD WHITE
- E-21 AQUA / AR NEON
- GREEN NEON TBD
- GOLD NEON TBD
- WHITE NEON
- RUBY RED NEON

COPYRIGHT © 2025

ALL PRINT AND ELECTRONIC ART REMAINS THE SOLE
COPYRIGHTED PROPERTY OF JOSLIN SIGNS, INC. AND
ARE NOT TO BE DISTRIBUTED, COPIED, E-MAILED OR
TRANSFERRED IN ANY WAY WITHOUT PRIOR WRITTEN
RELEASE FROM JOSLIN SIGNS, INC.