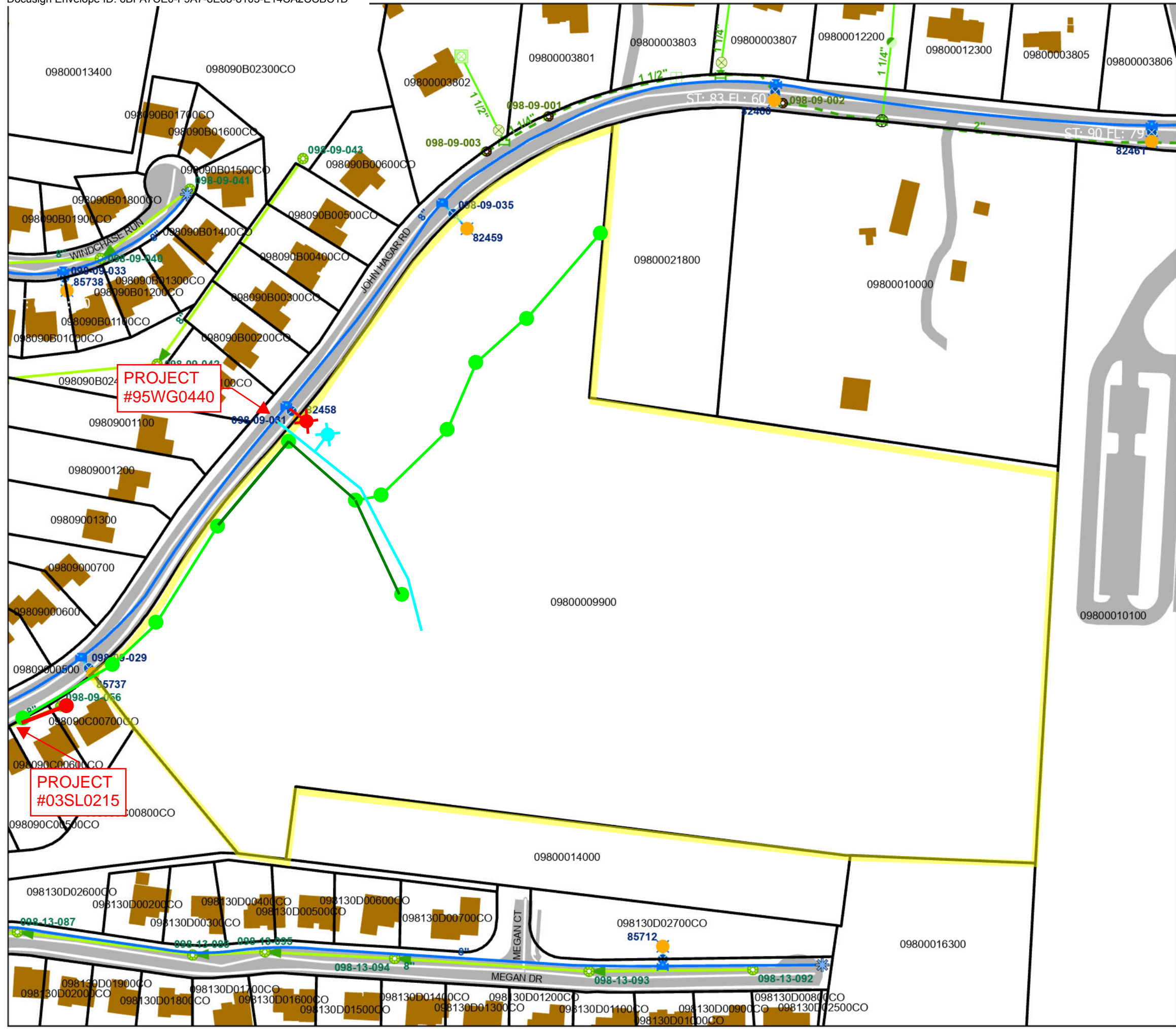


Kingsley Park Phase 1 REV01 23SL0091 & 23WL0039 Davidson County, TN



LEGEND

- Proposed 8-inch Sanitary Sewer (DIP)...471 LF
- Proposed 8-inch Sanitary Sewer (PVC)...1,015 LF
- Proposed Sanitary Sewer Manhole ... 12 Units
- Abandon Sanitary Manhole ... 1 Unit
- Abandon 8-inch Sanitary Sewer (PVC)...75 LF
- Proposed 8-inch Water Main (DIP)... 400 LF
- ★ Proposed Fire Hydrant ... 1 Units
- ★ Remove Fire Hydrant ... 1 Unit
- AND ASSOCIATED EASEMENTS

DATE: 03/17/2026

ENGINEERING FIRM: Dale & Associates
ENGINEER: Montgomery McClure, P.E.

COUNCIL DISTRICT: District 12 - Erin Evans
PARCEL NUMBERS: 09800009900

----- CAUTION -----

THE POSITION OF THE WATER AND SANITARY SEWER MAINS SHOWN ARE APPROXIMATE AND ARE INTENDED TO SHOW THE GENERAL LOCATION ONLY. THE SIZES NOTED ARE TO THE BEST OF MWS KNOWLEDGE. IN ALL CASES WHERE PRECISE LOCATION AND MAIN SIZES ARE REQUIRED, FIELD VERIFICATION WILL BE NECESSARY.

