



PROJECT: EAST BANK FLATS  
DATE: 02/06/2026  
DRAWN BY: [Name]  
CHECKED BY: [Name]  
SCALE: AS SHOWN  
SHEET NO: 18 OF 18



EAST BANK FLATS  
501 S. SECOND STREET  
NASHVILLE, TENNESSEE 37213



**HUMPHREYS**

REGISTERED PROFESSIONAL ARCHITECT  
STATE OF TENNESSEE  
NO. 0000000000

A4.18

25038

ADDENDUM B (PERMIT RESPONSE) (02/06/2026)

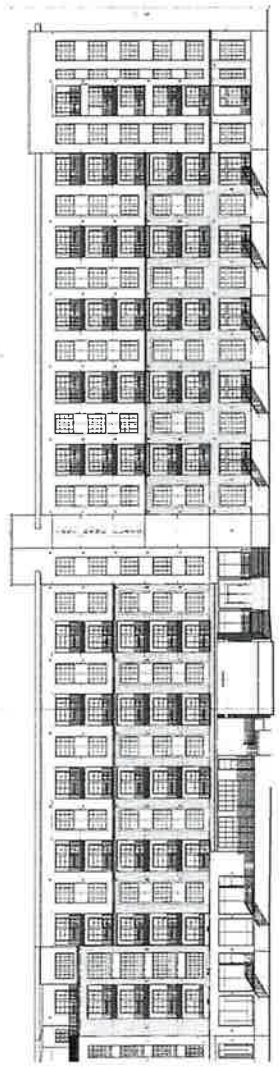
ELEVATION NOTES	
1.	ALL MATERIALS TO BE SHOWN ON THIS DRAWING TO BE INSTALLED IN ACCORDANCE WITH THE MANUFACTURER'S INSTALLATION INSTRUCTIONS.
2.	ALL MATERIALS TO BE SHOWN ON THIS DRAWING TO BE INSTALLED IN ACCORDANCE WITH THE MANUFACTURER'S INSTALLATION INSTRUCTIONS.
3.	ALL MATERIALS TO BE SHOWN ON THIS DRAWING TO BE INSTALLED IN ACCORDANCE WITH THE MANUFACTURER'S INSTALLATION INSTRUCTIONS.
4.	ALL MATERIALS TO BE SHOWN ON THIS DRAWING TO BE INSTALLED IN ACCORDANCE WITH THE MANUFACTURER'S INSTALLATION INSTRUCTIONS.
5.	ALL MATERIALS TO BE SHOWN ON THIS DRAWING TO BE INSTALLED IN ACCORDANCE WITH THE MANUFACTURER'S INSTALLATION INSTRUCTIONS.
6.	ALL MATERIALS TO BE SHOWN ON THIS DRAWING TO BE INSTALLED IN ACCORDANCE WITH THE MANUFACTURER'S INSTALLATION INSTRUCTIONS.
7.	ALL MATERIALS TO BE SHOWN ON THIS DRAWING TO BE INSTALLED IN ACCORDANCE WITH THE MANUFACTURER'S INSTALLATION INSTRUCTIONS.
8.	ALL MATERIALS TO BE SHOWN ON THIS DRAWING TO BE INSTALLED IN ACCORDANCE WITH THE MANUFACTURER'S INSTALLATION INSTRUCTIONS.
9.	ALL MATERIALS TO BE SHOWN ON THIS DRAWING TO BE INSTALLED IN ACCORDANCE WITH THE MANUFACTURER'S INSTALLATION INSTRUCTIONS.
10.	ALL MATERIALS TO BE SHOWN ON THIS DRAWING TO BE INSTALLED IN ACCORDANCE WITH THE MANUFACTURER'S INSTALLATION INSTRUCTIONS.

COLOR NOTES	
1.	ALL MATERIALS TO BE SHOWN ON THIS DRAWING TO BE INSTALLED IN ACCORDANCE WITH THE MANUFACTURER'S INSTALLATION INSTRUCTIONS.
2.	ALL MATERIALS TO BE SHOWN ON THIS DRAWING TO BE INSTALLED IN ACCORDANCE WITH THE MANUFACTURER'S INSTALLATION INSTRUCTIONS.
3.	ALL MATERIALS TO BE SHOWN ON THIS DRAWING TO BE INSTALLED IN ACCORDANCE WITH THE MANUFACTURER'S INSTALLATION INSTRUCTIONS.
4.	ALL MATERIALS TO BE SHOWN ON THIS DRAWING TO BE INSTALLED IN ACCORDANCE WITH THE MANUFACTURER'S INSTALLATION INSTRUCTIONS.
5.	ALL MATERIALS TO BE SHOWN ON THIS DRAWING TO BE INSTALLED IN ACCORDANCE WITH THE MANUFACTURER'S INSTALLATION INSTRUCTIONS.
6.	ALL MATERIALS TO BE SHOWN ON THIS DRAWING TO BE INSTALLED IN ACCORDANCE WITH THE MANUFACTURER'S INSTALLATION INSTRUCTIONS.
7.	ALL MATERIALS TO BE SHOWN ON THIS DRAWING TO BE INSTALLED IN ACCORDANCE WITH THE MANUFACTURER'S INSTALLATION INSTRUCTIONS.
8.	ALL MATERIALS TO BE SHOWN ON THIS DRAWING TO BE INSTALLED IN ACCORDANCE WITH THE MANUFACTURER'S INSTALLATION INSTRUCTIONS.
9.	ALL MATERIALS TO BE SHOWN ON THIS DRAWING TO BE INSTALLED IN ACCORDANCE WITH THE MANUFACTURER'S INSTALLATION INSTRUCTIONS.
10.	ALL MATERIALS TO BE SHOWN ON THIS DRAWING TO BE INSTALLED IN ACCORDANCE WITH THE MANUFACTURER'S INSTALLATION INSTRUCTIONS.

ELEVATION - SYMBOL LEGEND	
1.	ALL MATERIALS TO BE SHOWN ON THIS DRAWING TO BE INSTALLED IN ACCORDANCE WITH THE MANUFACTURER'S INSTALLATION INSTRUCTIONS.
2.	ALL MATERIALS TO BE SHOWN ON THIS DRAWING TO BE INSTALLED IN ACCORDANCE WITH THE MANUFACTURER'S INSTALLATION INSTRUCTIONS.
3.	ALL MATERIALS TO BE SHOWN ON THIS DRAWING TO BE INSTALLED IN ACCORDANCE WITH THE MANUFACTURER'S INSTALLATION INSTRUCTIONS.
4.	ALL MATERIALS TO BE SHOWN ON THIS DRAWING TO BE INSTALLED IN ACCORDANCE WITH THE MANUFACTURER'S INSTALLATION INSTRUCTIONS.
5.	ALL MATERIALS TO BE SHOWN ON THIS DRAWING TO BE INSTALLED IN ACCORDANCE WITH THE MANUFACTURER'S INSTALLATION INSTRUCTIONS.
6.	ALL MATERIALS TO BE SHOWN ON THIS DRAWING TO BE INSTALLED IN ACCORDANCE WITH THE MANUFACTURER'S INSTALLATION INSTRUCTIONS.
7.	ALL MATERIALS TO BE SHOWN ON THIS DRAWING TO BE INSTALLED IN ACCORDANCE WITH THE MANUFACTURER'S INSTALLATION INSTRUCTIONS.
8.	ALL MATERIALS TO BE SHOWN ON THIS DRAWING TO BE INSTALLED IN ACCORDANCE WITH THE MANUFACTURER'S INSTALLATION INSTRUCTIONS.
9.	ALL MATERIALS TO BE SHOWN ON THIS DRAWING TO BE INSTALLED IN ACCORDANCE WITH THE MANUFACTURER'S INSTALLATION INSTRUCTIONS.
10.	ALL MATERIALS TO BE SHOWN ON THIS DRAWING TO BE INSTALLED IN ACCORDANCE WITH THE MANUFACTURER'S INSTALLATION INSTRUCTIONS.



4 SYLVAN STREET ELEVATION - OVERALL  
1/8" = 1'-0"

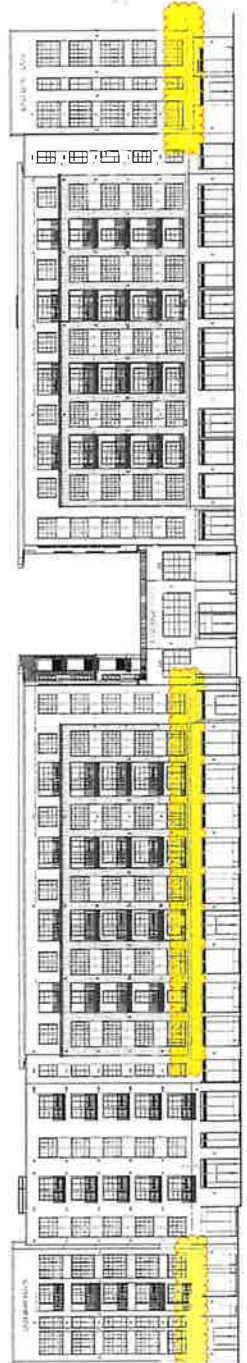


3 2ND STREET ELEVATION - OVERALL  
1/8" = 1'-0"

EXISTING MATERIALS TO BE REPAIRED OR REPLACED WITH MATCHING MATERIALS



2 PRIVATE DRIVE ELEVATION - OVERALL  
1/8" = 1'-0"



1 SHELBY AVENUE ELEVATION - OVERALL  
1/8" = 1'-0"

EXISTING MATERIALS TO BE REPAIRED OR REPLACED WITH MATCHING MATERIALS

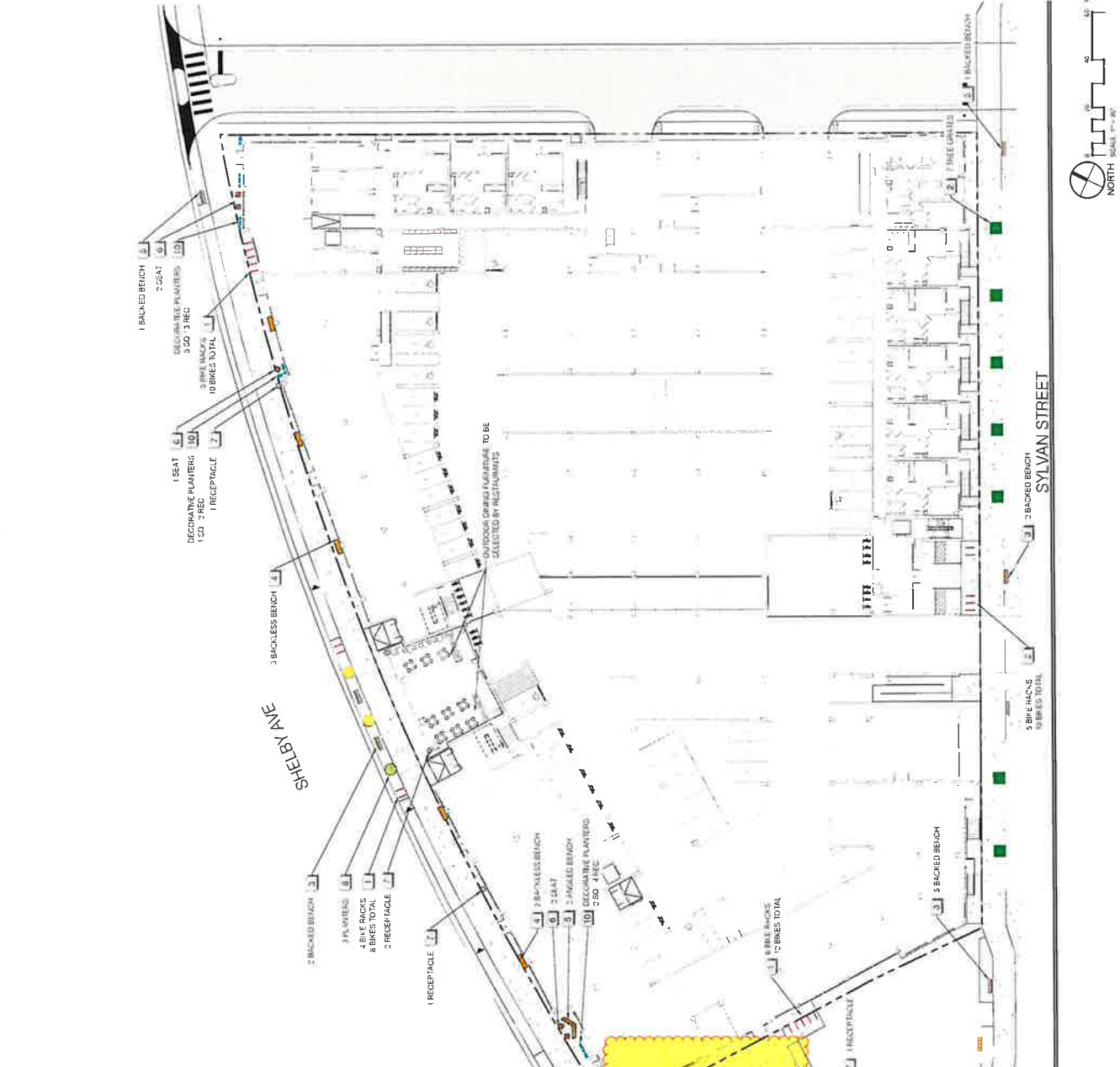
**STREETSCAPE AMENITY AREA LEGEND**

SYMBOL	DETAIL	NAME	QTY
	1	BENCH Bench Manufacture Landscape Forms Powder Coat, 10 Year Warranty	1
	2	TREE GATE Powder Coat, 10 Year Warranty	2
	3	BENCH - BACKED Bench Manufacture Landscape Forms Powder Coat, 10 Year Warranty	3
	4	RECEPTACLE Powder Coat, 10 Year Warranty	4
	5	BACKED BENCH Bench Manufacture Landscape Forms Powder Coat, 10 Year Warranty	5
	6	RECEPTACLE Powder Coat, 10 Year Warranty	6
	7	UTTER RECEPTACLE Powder Coat, 10 Year Warranty	7
	8	SQUARE RECEPTACLE Powder Coat, 10 Year Warranty	8
	9	CUSTOM PLANTER Plant Manufacture Landscape Forms Powder Coat, 10 Year Warranty	9
	10	RECEPTACLE Powder Coat, 10 Year Warranty	10

ELMINGTON CAPITAL GROUP  
NASHVILLE, TENNESSEE

DATE: 5/20/25  
PERMIT SET: 12/16/2025  
REVISION: 5/20/25  
PROJECT: EAST BANK FLATS

106 MISSION CRT, STE 403B  
FRANKLIN, TN 37067  
916.276.2421  
LAND DESIGN



SYMBOL	DETAIL	NAME	QTY
	1	BENCH	1
	2	TREE GATE	2
	3	BENCH - BACKED	3
	4	RECEPTACLE	4
	5	BACKED BENCH	5
	6	RECEPTACLE	6
	7	UTTER RECEPTACLE	7
	8	SQUARE RECEPTACLE	8
	9	CUSTOM PLANTER	9
	10	RECEPTACLE	10

**1** **BIKE RACK** (10)

Material: 304 Stainless Steel  
 Powder Coat - Lett Honey Blue  
 Wood Color - Thermally Modified Ash LFB  
 Surface Mount

**2** **KIVA TREE GRATE** (10)

Material: 304 Stainless Steel  
 Powder Coat - Lett Honey Blue  
 Wood Color - Thermally Modified Ash LFB  
 Surface Mount

**3** **BACKED BENCH** (10)

Material: 304 Stainless Steel  
 Powder Coat - Lett Honey Blue  
 Wood Color - Thermally Modified Ash LFB  
 Surface Mount

**4** **BACKLESS BENCH** (10)

Material: 304 Stainless Steel  
 Powder Coat - Lett Honey Blue  
 Wood Color - Thermally Modified Ash LFB  
 Surface Mount

**5** **ANGLED BENCH** (10)

Material: 304 Stainless Steel  
 Powder Coat - Lett Honey Blue  
 Wood Color - Thermally Modified Ash LFB  
 Surface Mount

**6** **SEAT** (10)

Material: 304 Stainless Steel  
 Powder Coat - Lett Honey Blue  
 Wood Color - Thermally Modified Ash LFB  
 Surface Mount

**7** **LITTER RECEPTACLE** (10)

Material: 304 Stainless Steel  
 Powder Coat - Lett Honey Blue  
 Wood Color - Thermally Modified Ash LFB  
 Surface Mount

**8** **ROUND PLANTER** (10)

Material: 304 Stainless Steel  
 Powder Coat - Lett Honey Blue  
 Wood Color - Thermally Modified Ash LFB  
 Surface Mount

**9** **KITSAP CUSTOM PLANTER** (10)

Material: 304 Stainless Steel  
 Powder Coat - Lett Honey Blue  
 Wood Color - Thermally Modified Ash LFB  
 Surface Mount

**10** **DECORATIVE PLANTERS** (10)

Material: 304 Stainless Steel  
 Powder Coat - Lett Honey Blue  
 Wood Color - Thermally Modified Ash LFB  
 Surface Mount

**EAST BANK FLATS**  
 NASHVILLE, TENNESSEE  
 ELMINGTON CAPITAL GROUP

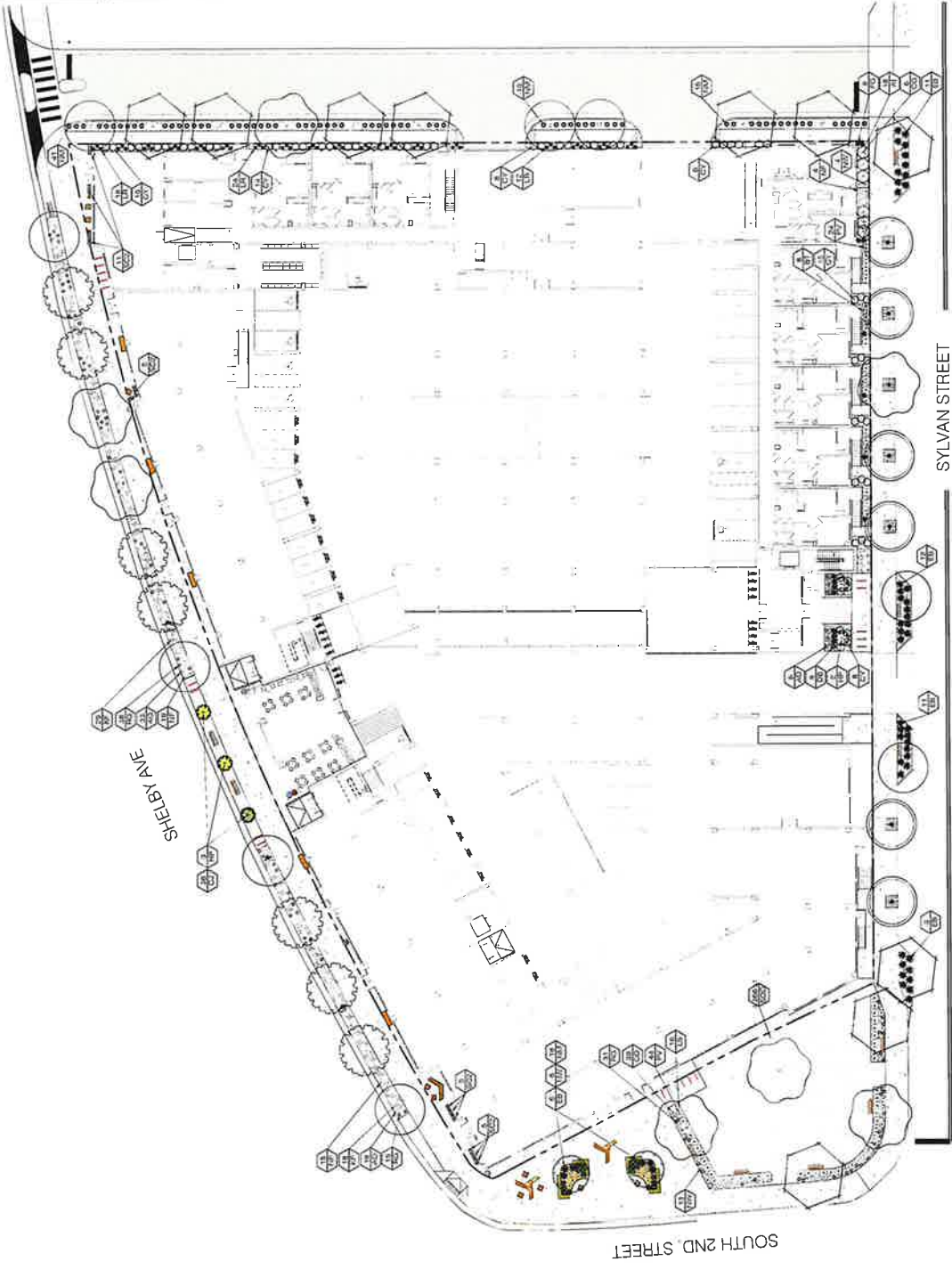
DESIGN: SCHEMATIC DESIGN  
 PERMIT SET  
 DATE: 9.18.25  
 SCALE: 1/8" = 1'-0"

PERMIT SET  
 12/18/2025

STREET FRONTAGE AMENITY DETAILS

L1.2

 <p>106 MIBBION CRT, STE 403B FRANKLIN, TN 37067 615.376.2421 hblandesign.com</p>	<p>EAST BANK FLATS ELMINGTON CAPITAL GROUP NASHVILLE, TENNESSEE</p>		<p>REVISION DATE 5.20.25 BY 13.02 PROJECT DESIGN DEVELOPMENT PERMIT SET</p>	<p>PERMIT SET 12/16/2025</p>	<p>STREET FRONTAGE LANDSCAPE</p>
--	---	--	---	----------------------------------	--------------------------------------



L1.3

