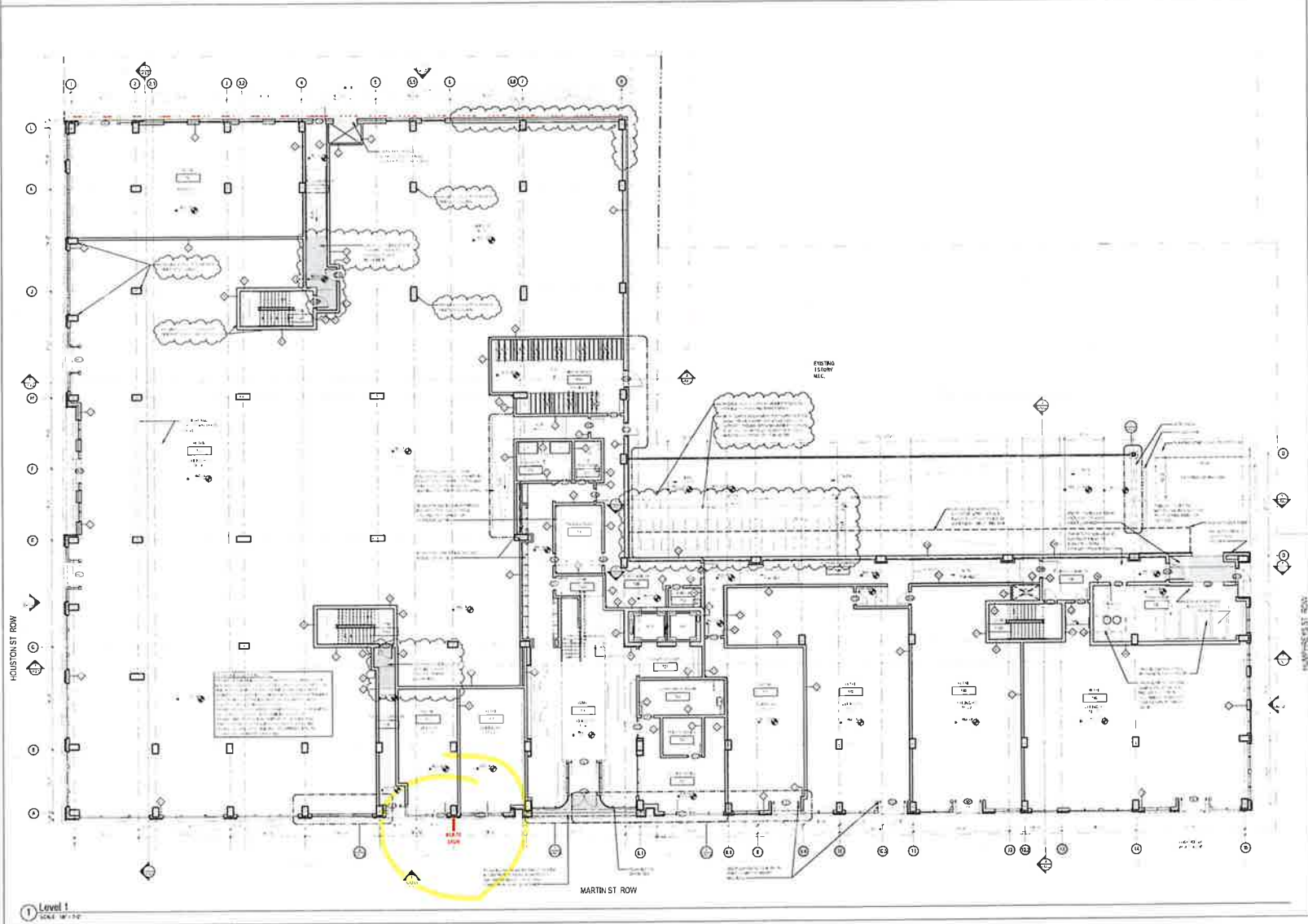


PLAN NOTES

- 1. ALL WORK SHALL BE IN ACCORDANCE WITH THE LATEST EDITIONS OF THE INTERNATIONAL BUILDING CODES (IBC) AND THE INTERNATIONAL MECHANICAL AND ELECTRICAL CODES (IMC/IEC).
- 2. ALL WORK SHALL BE IN ACCORDANCE WITH THE LATEST EDITIONS OF THE INTERNATIONAL CODES OF BOILER AND PRESSURE VESSEL SAFETY (IBR/IVS).
- 3. ALL WORK SHALL BE IN ACCORDANCE WITH THE LATEST EDITIONS OF THE INTERNATIONAL CODES OF ELECTRICAL SAFETY (IEC).
- 4. ALL WORK SHALL BE IN ACCORDANCE WITH THE LATEST EDITIONS OF THE INTERNATIONAL CODES OF MECHANICAL SAFETY (IMC).
- 5. ALL WORK SHALL BE IN ACCORDANCE WITH THE LATEST EDITIONS OF THE INTERNATIONAL CODES OF PLUMBING AND MECHANICAL SAFETY (IPC/IMC).
- 6. ALL WORK SHALL BE IN ACCORDANCE WITH THE LATEST EDITIONS OF THE INTERNATIONAL CODES OF FIRE AND ALARM SAFETY (IFAS).
- 7. ALL WORK SHALL BE IN ACCORDANCE WITH THE LATEST EDITIONS OF THE INTERNATIONAL CODES OF SAFETY (IS).
- 8. ALL WORK SHALL BE IN ACCORDANCE WITH THE LATEST EDITIONS OF THE INTERNATIONAL CODES OF ACCESSIBILITY (ICA).
- 9. ALL WORK SHALL BE IN ACCORDANCE WITH THE LATEST EDITIONS OF THE INTERNATIONAL CODES OF ENERGY EFFICIENCY (IEE).
- 10. ALL WORK SHALL BE IN ACCORDANCE WITH THE LATEST EDITIONS OF THE INTERNATIONAL CODES OF ENVIRONMENTAL QUALITY (IEQ).
- 11. ALL WORK SHALL BE IN ACCORDANCE WITH THE LATEST EDITIONS OF THE INTERNATIONAL CODES OF SUSTAINABILITY (IS).
- 12. ALL WORK SHALL BE IN ACCORDANCE WITH THE LATEST EDITIONS OF THE INTERNATIONAL CODES OF HEALTH AND WELLNESS (IHW).
- 13. ALL WORK SHALL BE IN ACCORDANCE WITH THE LATEST EDITIONS OF THE INTERNATIONAL CODES OF SECURITY (IS).
- 14. ALL WORK SHALL BE IN ACCORDANCE WITH THE LATEST EDITIONS OF THE INTERNATIONAL CODES OF TRANSPORTATION SAFETY (ITS).
- 15. ALL WORK SHALL BE IN ACCORDANCE WITH THE LATEST EDITIONS OF THE INTERNATIONAL CODES OF WATER AND WASTE SAFETY (IWW).
- 16. ALL WORK SHALL BE IN ACCORDANCE WITH THE LATEST EDITIONS OF THE INTERNATIONAL CODES OF AIR QUALITY (IAQ).
- 17. ALL WORK SHALL BE IN ACCORDANCE WITH THE LATEST EDITIONS OF THE INTERNATIONAL CODES OF SOUND AND VIBRATION SAFETY (ISVS).
- 18. ALL WORK SHALL BE IN ACCORDANCE WITH THE LATEST EDITIONS OF THE INTERNATIONAL CODES OF LIGHTING SAFETY (ILS).
- 19. ALL WORK SHALL BE IN ACCORDANCE WITH THE LATEST EDITIONS OF THE INTERNATIONAL CODES OF THERMAL ENVIRONMENT SAFETY (ITE).
- 20. ALL WORK SHALL BE IN ACCORDANCE WITH THE LATEST EDITIONS OF THE INTERNATIONAL CODES OF OCCUPANCY SAFETY (IOS).

PLAN MATERIAL KEY

- 1. EXISTING WALL
- 2. EXISTING FLOOR
- 3. EXISTING CEILING
- 4. EXISTING ROOF
- 5. EXISTING MECHANICAL
- 6. EXISTING ELECTRICAL
- 7. EXISTING PLUMBING
- 8. EXISTING STRUCTURE
- 9. EXISTING FINISH
- 10. EXISTING GLASS
- 11. EXISTING METAL
- 12. EXISTING WOOD
- 13. EXISTING CONCRETE
- 14. EXISTING MASONRY
- 15. EXISTING STEEL
- 16. EXISTING BRICK
- 17. EXISTING BLOCK
- 18. EXISTING TILE
- 19. EXISTING CARPET
- 20. EXISTING PAINT



SEE SPECIFICATIONS FOR
 DEVELOPER
 PROJECT NO.
 ARCHITECT
 ENGINEER AND ARCHITECT
LPA
 DRIVEN ARCHITECTURE AND DESIGN
 FORECAST STRUCTURAL ENGINEERS INC.
 AL THOMASSON ASSOCIATES, INC.
 E.E. THOMASSON ASSOCIATES, INC.
 E.E. THOMASSON ASSOCIATES, INC.
 E.E. THOMASSON ASSOCIATES, INC.
 BRUCE CRUTCHER & ASSOCIATES
 INTERNATIONAL DESIGN ASSOCIATES
 JENNIFER H. HOFFMANN

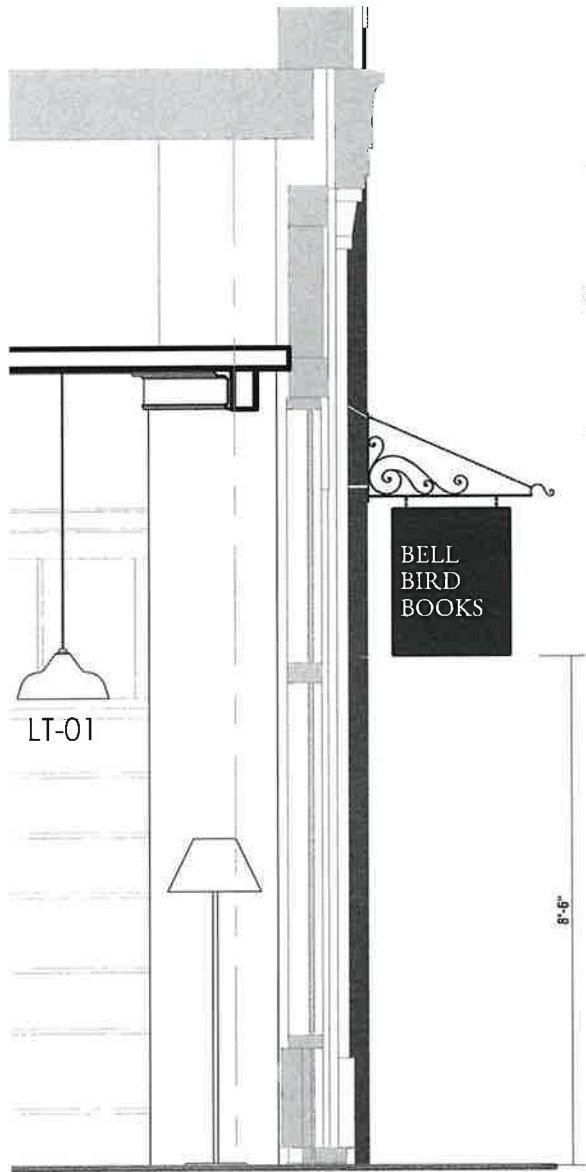
THIS IS A PRELIMINARY PLAN. IT IS SUBJECT TO CHANGE WITHOUT NOTICE. THE CONTRACTOR SHALL VERIFY ALL CONDITIONS AND CONDITIONS OF THE SITE AND SHALL BE RESPONSIBLE FOR OBTAINING ALL NECESSARY PERMITS AND APPROVALS FROM THE APPROPRIATE AGENCIES. THE CONTRACTOR SHALL BE RESPONSIBLE FOR OBTAINING ALL NECESSARY PERMITS AND APPROVALS FROM THE APPROPRIATE AGENCIES. THE CONTRACTOR SHALL BE RESPONSIBLE FOR OBTAINING ALL NECESSARY PERMITS AND APPROVALS FROM THE APPROPRIATE AGENCIES.

Building A
 10000 HOUSTON ST. ROW
 HOUSTON, TX 77036
 PROJECT NO. 2017-001
 SHEET NO. A-1.01

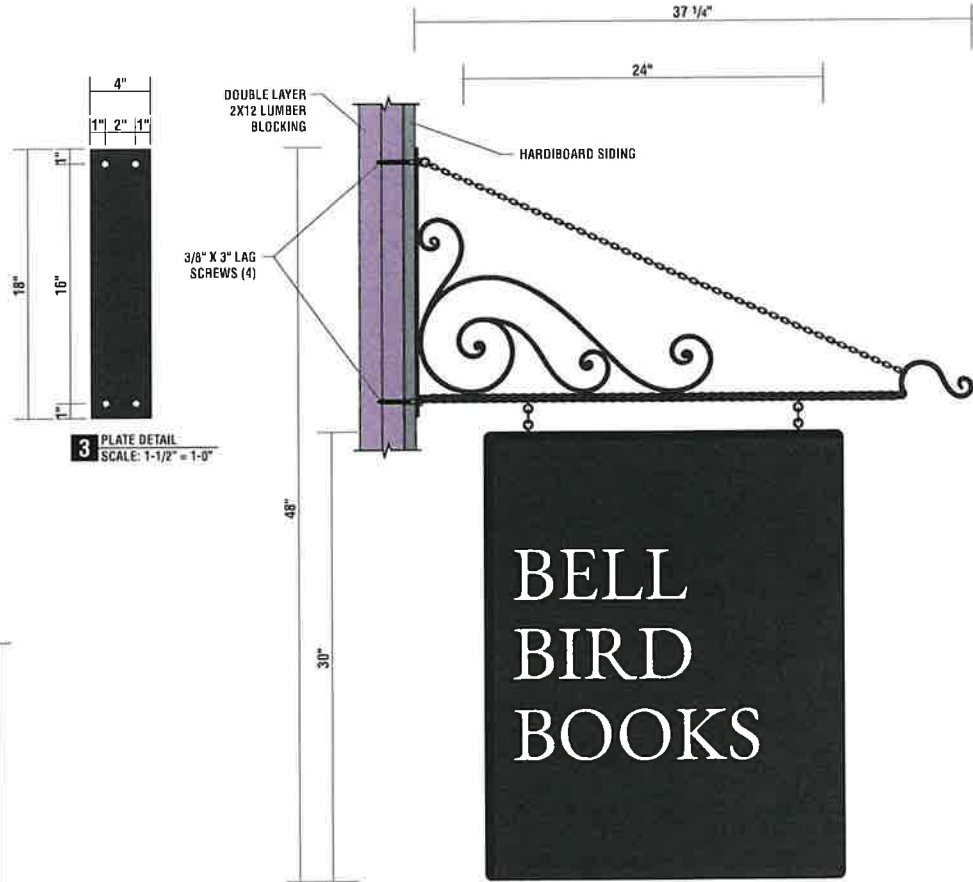
SCALE: AS SHOWN

REGISTERED PROFESSIONAL ARCHITECT
 STATE OF TEXAS
 EXPIRES 12/31/2024
 REG. NO. 2017-001

FIRST FLOOR PLAN
A-1.01



1 ELEVATION
SCALE: 1/2" = 1'-0"



1 FRONT VIEW
SCALE: 1-1/2" = 1'-0"

3 PLATE DETAIL
SCALE: 1-1/2" = 1'-0"

**CUSTOM STEEL DECORATIVE BRACKET PAINTED BLACK.
1" DEEP NON-ILLUMINATED CABINET PAINTED BLACK.
1/4" THICK FLAT CUT ALUMINUM LETTERS PAINTED SW7104 COTTON WHITE
SIGN IS DOUBLE FACED.
INSTALL THROUGH CLADDING INTO DOUBLE-THICK 2X12 BLOCKING
WITH FOUR (4) 3/8" X 3" LAGS**

JARVIS SIGNS
DESIGN • BUILD • INSTALL • SERVICE

310 Madison St
Madison, TN 37115

615.865.6062

www.jarvisigns.com

Customer:
BELL BIRD BOOKS
1208 MARTIN ST
NASHVILLE, TN

File Location:
BABELL BIRD BOOKS/BELL BIRD
BOOKS SIGNAGE.AI

Sign Type:
SHINGLE

Drawn By: AJS **Project Manager:** AJS

PAGE #
SG.1

Original Date:	Revision Date:	Rev #
11/25/25	12/01/25	1

DISCLAIMERS:
This Document is the exclusive property of Jarvis Signs Incorporated, Madison, Tennessee, and may not be copied, reproduced, manufactured, marketed or sold in whole or part without the express written consent of Jarvis Signs Incorporated.
Production will proceed upon receipt of your signed and sealed agreement.
Jarvis Signs, Inc. and its subcontractors assume no liability for the accuracy of the information provided to the customer. The customer is responsible for verifying all dimensions, colors, spacing and overall appearance of the sign before production. Any corrections made after production begins will be the customer's responsibility and additional charges will apply.
Colors may appear differently from one computer monitor to another. The colors in this customer's sign requests represent an attempt to convey only to be used as a reference. Jarvis Signs is not responsible for accurate color reproduction.

