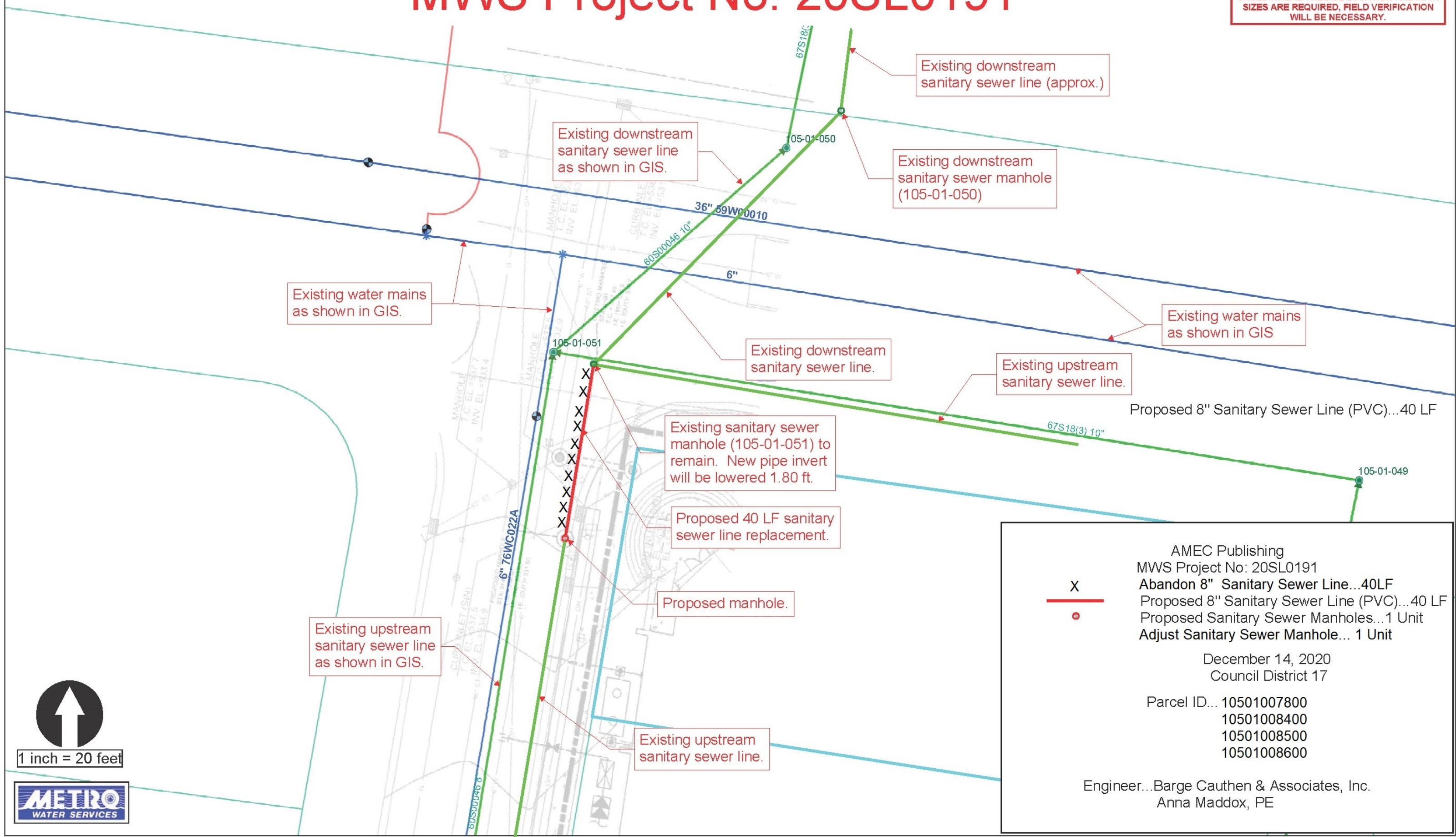


Vicinity Sketch

MWS Project No: 20SL0191

----- CAUTION -----
 THE POSITION OF THE WATER AND SANITARY SEWER MAINS SHOWN ARE APPROXIMATE AND ARE INTENDED TO SHOW THE GENERAL LOCATION ONLY. THE SIZES NOTED ARE TO THE BEST OF MWS KNOWLEDGE. IN ALL CASES WHERE PRECISE LOCATION AND MAIN SIZES ARE REQUIRED, FIELD VERIFICATION WILL BE NECESSARY.



Existing water mains as shown in GIS.

Existing downstream sanitary sewer line as shown in GIS.

Existing downstream sanitary sewer line (approx.)

Existing downstream sanitary sewer manhole (105-01-050)

Existing water mains as shown in GIS

Existing downstream sanitary sewer line.

Existing upstream sanitary sewer line.

Proposed 8" Sanitary Sewer Line (PVC)...40 LF

Existing sanitary sewer manhole (105-01-051) to remain. New pipe invert will be lowered 1.80 ft.

Proposed 40 LF sanitary sewer line replacement.

Proposed manhole.

Existing upstream sanitary sewer line as shown in GIS.

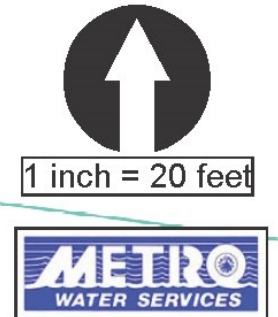
Existing upstream sanitary sewer line.

AMEC Publishing
 MWS Project No: 20SL0191
 Abandon 8" Sanitary Sewer Line...40LF
 Proposed 8" Sanitary Sewer Line (PVC)...40 LF
 Proposed Sanitary Sewer Manholes... 1 Unit
 Adjust Sanitary Sewer Manhole... 1 Unit

December 14, 2020
 Council District 17

Parcel ID... 10501007800
 10501008400
 10501008500
 10501008600

Engineer...Barge Cauthen & Associates, Inc.
 Anna Maddox, PE



1 inch = 20 feet