

ORDINANCE NO. BL2020 - 469

An ordinance authorizing The Metropolitan Government of Nashville and Davidson County to accept public sanitary sewer mains, sewer manholes and easements, for three properties located on Clovercroft Road in Williamson County, also known as Twin Valley Farms (MWS Project No. 20-SL-141 and Proposal No. 2020M-072ES-001).

WHEREAS, the acceptance of approximately 138 linear feet of new eight inch sanitary sewer main (DIP), approximately 252 linear feet of new eight inch sanitary sewer main (PVC), two sanitary sewer manholes and easements, for three properties located on Clovercroft Road in Williamson County, also known as Twin Valley Farms, is needed to construct project number 20-SL-141; and,

WHEREAS, the Metropolitan Planning Commission approved mandatory referral No. 2020M-072ES-001 on August 26, 2020, for the acceptance of said sanitary sewer mains, sanitary sewer manholes and easements.

NOW, THEREFORE, BE IT ENACTED BY THE COUNCIL OF THE METROPOLITAN GOVERNMENT OF NASHVILLE AND DAVIDSON COUNTY:

Section 1. The Metropolitan Government of Nashville and Davidson County is authorized to accept approximately 138 linear feet of new eight inch sanitary sewer main (DIP), approximately 252 linear feet of new eight inch sanitary sewer main (PVC), two sanitary sewer manholes and easements, for three properties located on Clovercroft Road in Williamson County, also known as Twin Valley Farms, as shown on Exhibit 1, which is attached hereto and incorporated by reference.

Map & Parcel: (Williamson Co.)	Address:
Tax Map 59; Parcel 12.05	Clovercroft Road (unnumbered)
Tax Map 59; Parcel 12.06	Clovercroft Road (unnumbered)
Tax Map 59; Parcel 12.07	Clovercroft Road (unnumbered)

Section 2. The Directors of Water and Sewerage Services and Public Property Administration are authorized to execute such documents as may be necessary and appropriate to carry out the acceptance authorized by this ordinance.

Section 3. Amendments to this legislation shall be approved by resolution.

Section 4. This ordinance shall take effect from and after its final passage, the welfare of The Metropolitan Government of Nashville and Davidson County requiring it.

RECOMMENDED BY:

INTRODUCED BY:

DocuSigned by:

Scott Potter

904E7D0AE02B459  
Scott A. Potter, Director  
Water and Sewerage Services

Kathleen D Murphy

Robert Aach

DocuSigned by:

Talia Lomax-O'dneal

6ACB297069E14E9  
Talia Lomax-O'dneal, Interim Director  
Public Property Administration

Council Member(s)

APPROVED AS TO THE  
AVAILABILITY OF FUNDS:

DocuSigned by:

Kevin Crumbo

00F3D7E3BB57453  
Kevin Crumbo, Director  
Department of Finance

APPROVED AS TO FORM  
AND LEGALITY:

DocuSigned by:

Sara Ladd

E355FC378EF2427...  
Assistant Metropolitan Attorney



**METROPOLITAN GOVERNMENT  
OF NASHVILLE AND DAVIDSON COUNTY**

Planning Department  
Metro Office Building  
800 Second Avenue South  
Nashville, Tennessee 37201

August 26, 2020

To: Mike Atchison, Metro Water Services

**Re: Twin Valley Farms  
Planning Commission Mandatory Referral #2020M-072ES-001  
Williamson County**

On behalf of the Metropolitan Planning Commission, the following item, referred to the Commission as required by the Metro Charter, has been recommended for *approval* to the Metropolitan Council:

*A request for the acceptance of approximately 138 linear feet of 8-inch sanitary sewer main (DIP), 252 linear feet of 8-inch sanitary sewer main (PVC), two sanitary sewer manholes, and easements in Williamson County to serve the Twin Valley Farms development (MWS proj. no. 20-SL-141).*

The relevant Metro agencies (Metro Parks, Metro Public Works, Metro Water Services, Metro Emergency Communications, the Nashville Electric Service, Metro Finance – Public Property and the Metro Historical Commission) have reviewed the proposal and concur in the recommendation for approval. This request must be approved by the Metro Council to become effective. A sketch showing the location of the request is attached to this letter.

**Conditions that apply to this approval: None.**

This recommendation for approval is given as set forth in the Metropolitan Planning Commission Rules and Procedures. If you have any questions about this matter, please contact Sharon O'Conner at [Sharon.oconner@nashville.gov](mailto:Sharon.oconner@nashville.gov) or [615-862-7208](tel:615-862-7208).

Sincerely,

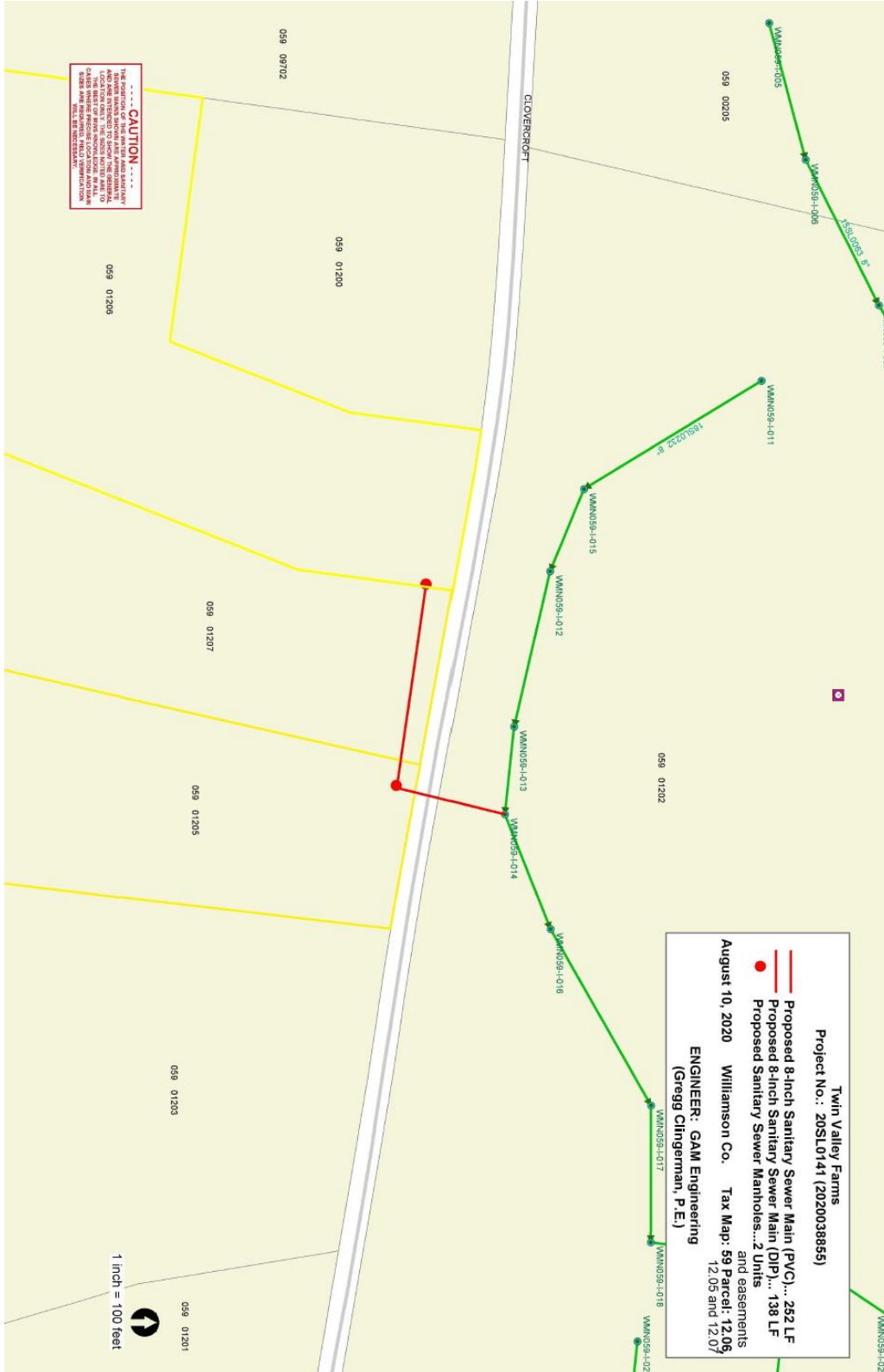
A handwritten signature in cursive script that reads 'Robert Leeman'.

Robert Leeman, AICP  
Deputy Director  
Metro Planning Department




cc: Metro Clerk, Elizabeth Waites

**Re: Twin Valley Farms  
Planning Commission Mandatory Referral #2020M-072ES-001  
Williamson County**

*A request for the acceptance of approximately 138 linear feet of 8-inch sanitary sewer main (DIP), 252 linear feet of 8-inch sanitary sewer main (PVC), two sanitary sewer manholes, and easements in Williamson County to serve the Twin Valley Farms development (MWS proj. no. 20-SL-141).*



**Twin Valley Farms**  
**Project No.: 20SL0141 (2020038855)**

 **Proposed 8-Inch Sanitary Sewer Main (PVC)... 252 LF**  
 **Proposed 8-Inch Sanitary Sewer Main (DIP)... 138 LF**  
 **Proposed Sanitary Sewer Manholes...2 Units**


and easements  
**August 10, 2020 Williamson Co. Tax Map: 59 Parcel: 12.06,**  
 12.05 and 12.07

**ENGINEER: GAM Engineering**  
**(Gregg Clingerman, P.E.)**



**----- CAUTION -----**

THE POSITION OF THE WATER AND SANITARY SEWER MAINS SHOWN ARE APPROXIMATE AND ARE INTENDED TO SHOW THE GENERAL LOCATION ONLY. THE SIZES NOTED ARE TO THE BEST OF MWS KNOWLEDGE. IN ALL CASES WHERE PRECISE LOCATION AND MAIN SIZES ARE REQUIRED, FIELD VERIFICATION WILL BE NECESSARY.

  
 1 inch = 100 feet

# ORIGINAL

---

---

***METROPOLITAN COUNTY COUNCIL***

**Bill No.** \_\_\_\_\_

An ordinance authorizing The Metropolitan Government of Nashville and Davidson County to accept public sanitary sewer mains, sewer manholes and easements, for three properties located on Clovercroft Road in Williamson County, also known as Twin Valley Farms (MWS Project No. 20-SL-141 and Proposal No. 2020M-072ES-001).

---

---

*Introduced* \_\_\_\_\_

*Passed First Reading* \_\_\_\_\_

*Amended* \_\_\_\_\_

---

*Passed Second Reading* \_\_\_\_\_

---

*Passed Third Reading* \_\_\_\_\_

---

---

*Approved* \_\_\_\_\_

*By* \_\_\_\_\_  
*Metropolitan Mayor*

*Advertised* \_\_\_\_\_

*Effective Date* \_\_\_\_\_

---

---