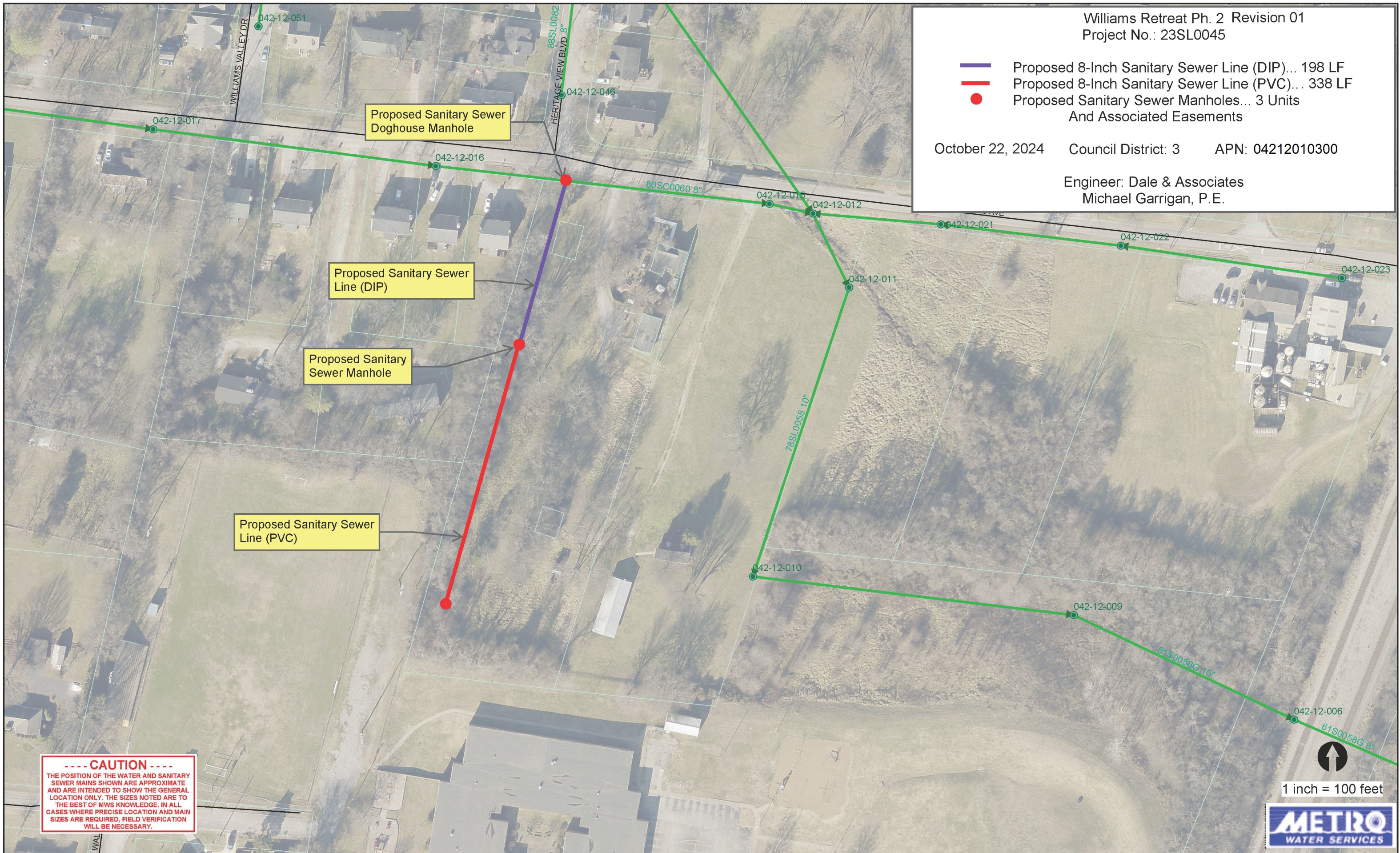


Williams Retreat Ph. 2 Revision 01
Project No.: 23SL0045

- Proposed 8-Inch Sanitary Sewer Line (DIP)... 198 LF
- Proposed 8-Inch Sanitary Sewer Line (PVC)... 338 LF
- Proposed Sanitary Sewer Manholes... 3 Units
And Associated Easements

October 22, 2024 Council District: 3 APN: 04212010300

Engineer: Dale & Associates
Michael Garrigan, P.E.



Proposed Sanitary Sewer
Doghouse Manhole

Proposed Sanitary Sewer
Line (DIP)

Proposed Sanitary
Sewer Manhole

Proposed Sanitary Sewer
Line (PVC)

----- CAUTION -----
 THE POSITION OF THE WATER AND SANITARY
 SEWER MAINS SHOWN ARE APPROXIMATE
 AND ARE INTENDED TO SHOW THE GENERAL
 LOCATION ONLY. THE SIZES NOTED ARE TO
 THE BEST OF MWS KNOWLEDGE. IN ALL
 CASES WHERE PRECISE LOCATION AND MAIN
 SIZES ARE REQUIRED, FIELD VERIFICATION
 WILL BE NECESSARY.

1 inch = 100 feet



N A S H V I L L E
P L A N N I N G

November 6, 2024

To: Donnie Stevanus Metro Water Services

Re: **Williams Retreat Phase 2 Revision (Amendment)**
Planning Commission Mandatory Referral 2023M-145ES-002
Council District #03 Jennifer Gamble, Council Member

On behalf of the Metropolitan Planning Commission, the following item, referred to the Commission as required by the Metro Charter, has been recommended for *approval* to the Metropolitan Council:


A request to amend Council Ordinance BL2023-49 and Proposal No. 2023-145ES-001 for the purpose of accepting approximately 95 linear feet less of new eight-inch sanitary sewer main (DIP) and approximately 95 linear feet more of new eight-inch sanitary sewer main (PVC) for the project. Also, we need to update the Map and Parcel information. Specific infrastructure instead now will be the acceptance of approximately 338 linear feet of eight-inch sanitary sewer main (PVC) and approximately 198 linear feet of new eight-inch sanitary sewer main (DIP), three manholes and associated easement to serve the Williams Retreat Phase 2, Revision 1 project.

The relevant Metro agencies (Metro Parks, Nashville Department of Transportation, Metro Water Services, Metro Emergency Communications, the Nashville Electric Service, Metro Finance – Public Property and the Metro Historical Commission) have reviewed the proposal and concur in the recommendation for approval. This request must be approved by the Metro Council to become effective. A sketch showing the location of the request is attached to this letter.

Conditions that apply to this approval: none

This recommendation for approval is given as set forth in the Metropolitan Planning Commission Rules and Procedures. If you have any questions about this matter, please contact Delilah Rhodes at Delilah.Rhodes@nashville.gov or 615-862-7208

Sincerely,



Lisa Milligan
Assistant Director Land Development
Metro Planning Department
cc: Metro Clerk

**Re: Williams Retreat Phase 2 Revision (Amendment)
Planning Commission Mandatory Referral 2023M-145ES-002
Council District #03 Jennifer Gamble, Council Member**

A request to amend Council Ordinance BL2023-49 and Proposal No. 2023-145ES-001 for the purpose of accepting approximately 95 linear feet less of new eight-inch sanitary sewer main (DIP) and approximately 95 linear feet more of new eight-inch sanitary sewer main (PVC) for the project. Also, we need to update the Map and Parcel information. Specific infrastructure instead now will be the acceptance of approximately 338 linear feet of eight-inch sanitary sewer main (PVC) and approximately 198 linear feet of new eight-inch sanitary sewer main (DIP), three manholes and associated easement to serve the Williams Retreat Phase 2, Revision 1 project.

