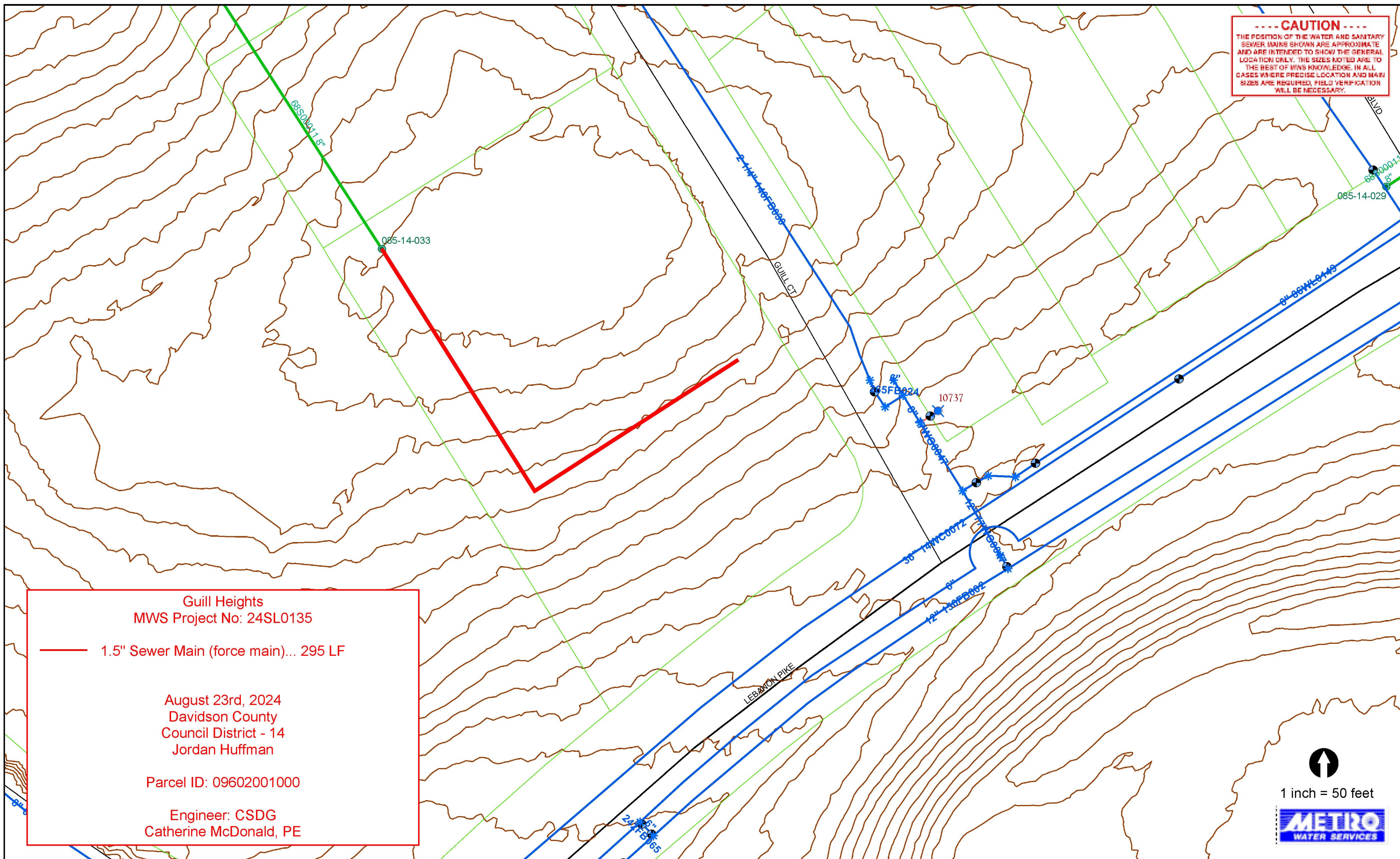


---- CAUTION ----
THE POSITION OF THE WATER AND SANITARY SEWER MAINS SHOWN ARE APPROXIMATE AND ARE INTENDED TO SHOW THE GENERAL LOCATION ONLY. THE SIZES NOTED ARE TO THE BEST OF MWS KNOWLEDGE. IN ALL CASES WHERE PRECISE LOCATION AND MAIN SIZES ARE REQUIRED, FIELD VERIFICATION WILL BE NECESSARY.



Gull Heights
MWS Project No: 24SL0135
— 1.5" Sewer Main (force main)... 295 LF
August 23rd, 2024
Davidson County
Council District - 14
Jordan Huffman
Parcel ID: 09602001000
Engineer: CSDG
Catherine McDonald, PE

↑
1 inch = 50 feet
METRO
WATER SERVICES



September 10, 2024

To: Donnie Stevanus Metro Water Services

**Re: Guill Heights
Planning Commission Mandatory Referral 2024M-112ES-001
Council District #14 Jordan Huffman, Council Member**

On behalf of the Metropolitan Planning Commission, the following item, referred to the Commission as required by the Metro Charter, has been recommended for *approval* to the Metropolitan Council:

A request for the acceptance of approximately 295 linear feet of one and one half-inch SDR 21 PVC sewer force main to serve the Guill Heights development.

The relevant Metro agencies (Metro Parks, Nashville Department of Transportation, Metro Water Services, Metro Emergency Communications, the Nashville Electric Service, Metro Finance – Public Property and the Metro Historical Commission) have reviewed the proposal and concur in the recommendation for approval. This request must be approved by the Metro Council to become effective. A sketch showing the location of the request is attached to this letter.

Conditions that apply to this approval: none

This recommendation for approval is given as set forth in the Metropolitan Planning Commission Rules and Procedures. If you have any questions about this matter, please contact Delilah Rhodes at Christopher.Paulsen@nashville.gov or 615-880-2452

Sincerely,

A handwritten signature in blue ink that reads "Lisa Milligan".

Lisa Milligan
Assistant Director Land Development
Metro Planning Department
cc: *Metro Clerk*

**Re: Guill Heights
Planning Commission Mandatory Referral 2024M-112ES-001
Council District #14 Jordan Huffman, Council Member**

A request for the acceptance of approximately 295 linear feet of one and one half-inch SDR 21 PVC sewer force main to serve the Guill Heights development.

