

N A S H V I L L E
P L A N N I N G

August 8, 2024

To: Mike Atchison Metro Water Services

Re: **Errico Subdivision**
Planning Commission Mandatory Referral 2024M-100ES-001

On behalf of the Metropolitan Planning Commission, the following item, referred to the Commission as required by the Metro Charter, has been recommended for *approval* to the Metropolitan Council:

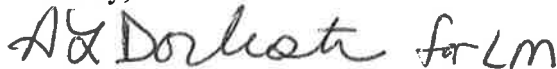
A request for the acceptance of approximately 1,529 linear feet of new 8-inch sanitary sewer mains (PVC), 1,050 linear feet of new 8-inch sanitary sewer mains (DIP), 12 new sanitary sewer manholes, and associated easements to serve the Errico Subdivision.

The relevant Metro agencies (Metro Parks, Nashville Department of Transportation, Metro Water Services, Metro Emergency Communications, the Nashville Electric Service, Metro Finance – Public Property and the Metro Historical Commission) have reviewed the proposal and concur in the recommendation for approval. This request must be approved by the Metro Council to become effective. A sketch showing the location of the request is attached to this letter.

Conditions that apply to this approval: none

This recommendation for approval is given as set forth in the Metropolitan Planning Commission Rules and Procedures. If you have any questions about this matter, please contact Christopher Paulsen at Christopher.paulsen@nashville.gov or 615-880-2452.

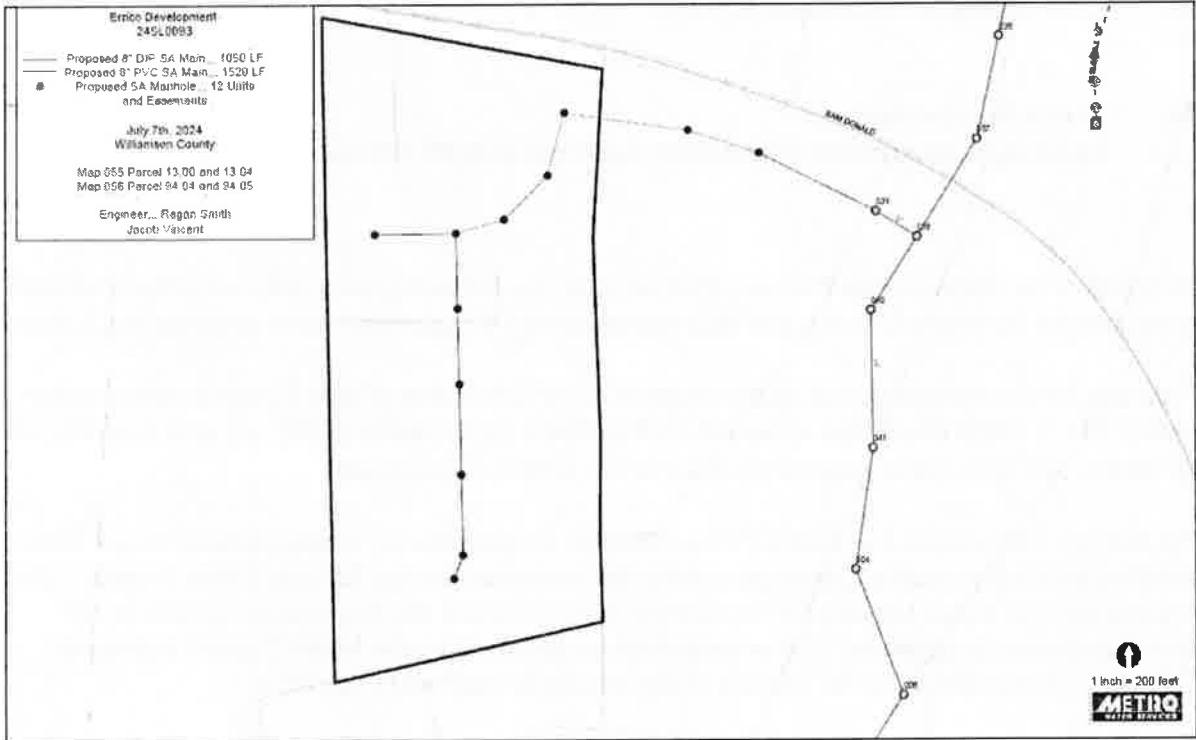
Sincerely,



Lisa Milligan
Assistant Director Land Development
Metro Planning Department
cc: *Metro Clerk*

**Re: Errico Subdivision
Planning Commission Mandatory Referral 2024M-100ES-001**

A request for the acceptance of approximately 1,529 linear feet of new 8-inch sanitary sewer mains (PVC), 1,050 linear feet of new 8-inch sanitary sewer mains (DIP), 12 new sanitary sewer manholes, and associated easements to serve the Errico Subdivision.



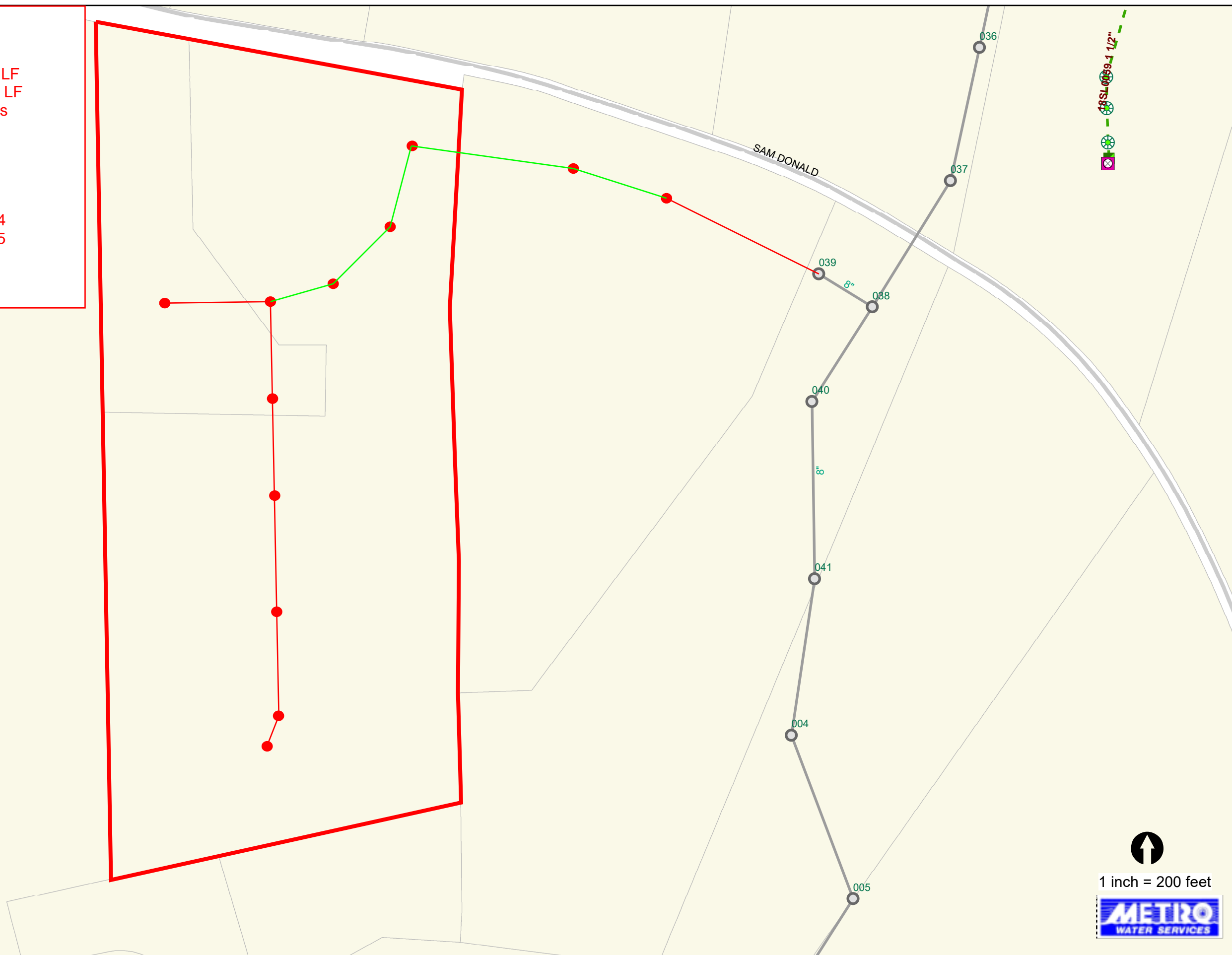
Errico Development
24SL0093

Proposed 8" DIP SA Main... 1050 LF
Proposed 8" PVC SA Main... 1529 LF
Proposed SA Manhole... 12 Units
and Easements

July 7th, 2024
Williamson County

Map 055 Parcel 13.00 and 13.04
Map 056 Parcel 94.04 and 94.05

Engineer... Ragan Smith
Jacob Vincent



1 inch = 200 feet

The logo for METRO WATER SERVICES, featuring the word 'METRO' in a stylized blue font above 'WATER SERVICES' in a smaller blue font, all within a blue rectangular border.

**Errico Subdivision
(Williamson Co.)
Project # 24-SL-93
Parcel List**

Map/Parcels	Address	Property Owner
055 01304 000	9809 Sam Donald Road	Turnsberry Homes LLC
055 01300 000	Sam Donald Road (unnumbered)	Turnsberry Homes LLC
056 09404 000	9813 Sam Donald Road	James & Sherri Newsom
056 09405 000	9817 Sam Donald Road	Beth Bradley O'Connell