

N A S H V I L L E
P L A N N I N G

March 20, 2024

To: Mike Atchison Metro Water Services

Re: **1328 McAlpine Ave.**
Planning Commission Mandatory Referral 2024M-034ES-001
Council District #07 Emily Benedict, Council Member

On behalf of the Metropolitan Planning Commission, the following item, referred to the Commission as required by the Metro Charter, has been recommended for *approval* to the Metropolitan Council:

A request for the acceptance of approximately 62 linear feet of eight-inch sanitary sewer main (PVC) and one sanitary sewer manhole to serve the development at 1328 McAlpine Avenue.

The relevant Metro agencies (Metro Parks, Nashville Department of Transportation, Metro Water Services, Metro Emergency Communications, the Nashville Electric Service, Metro Finance – Public Property and the Metro Historical Commission) have reviewed the proposal and concur in the recommendation for approval. This request must be approved by the Metro Council to become effective. A sketch showing the location of the request is attached to this letter.

Conditions that apply to this approval: none

This recommendation for approval is given as set forth in the Metropolitan Planning Commission Rules and Procedures. If you have any questions about this matter, please contact Delilah Rhodes at Delilah.Rhodes@nashville.gov or 615-862-7208

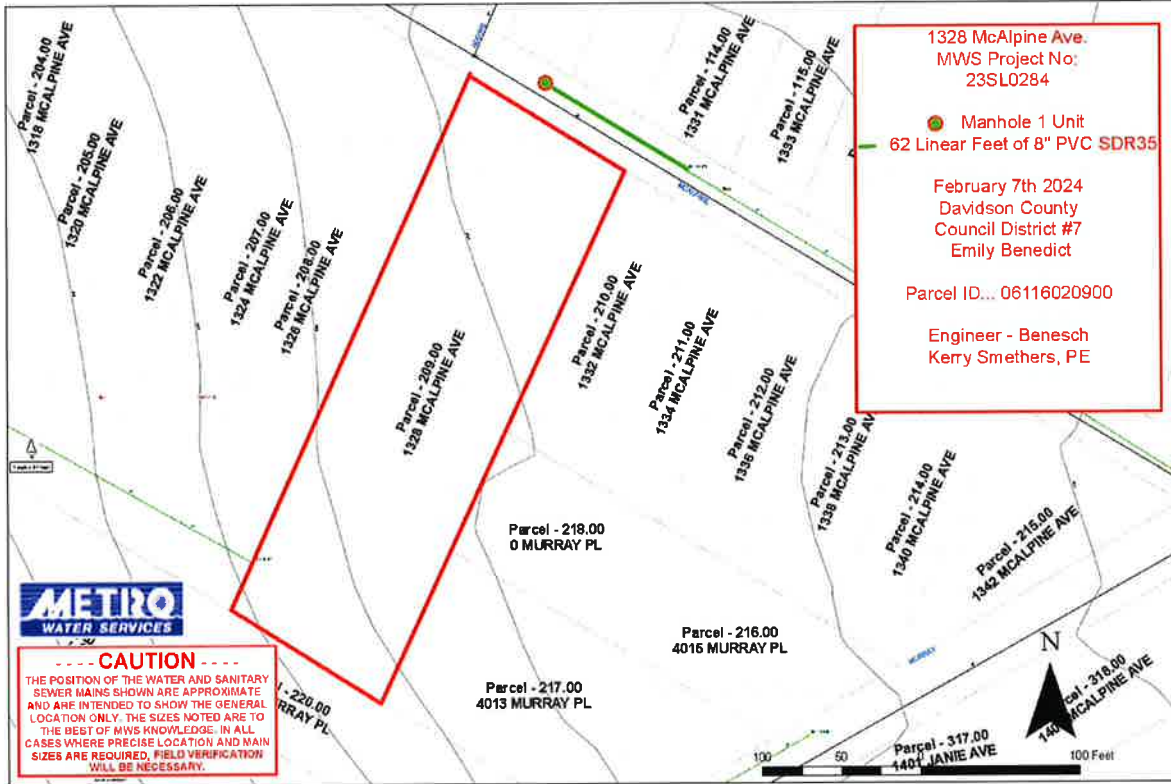
Sincerely,

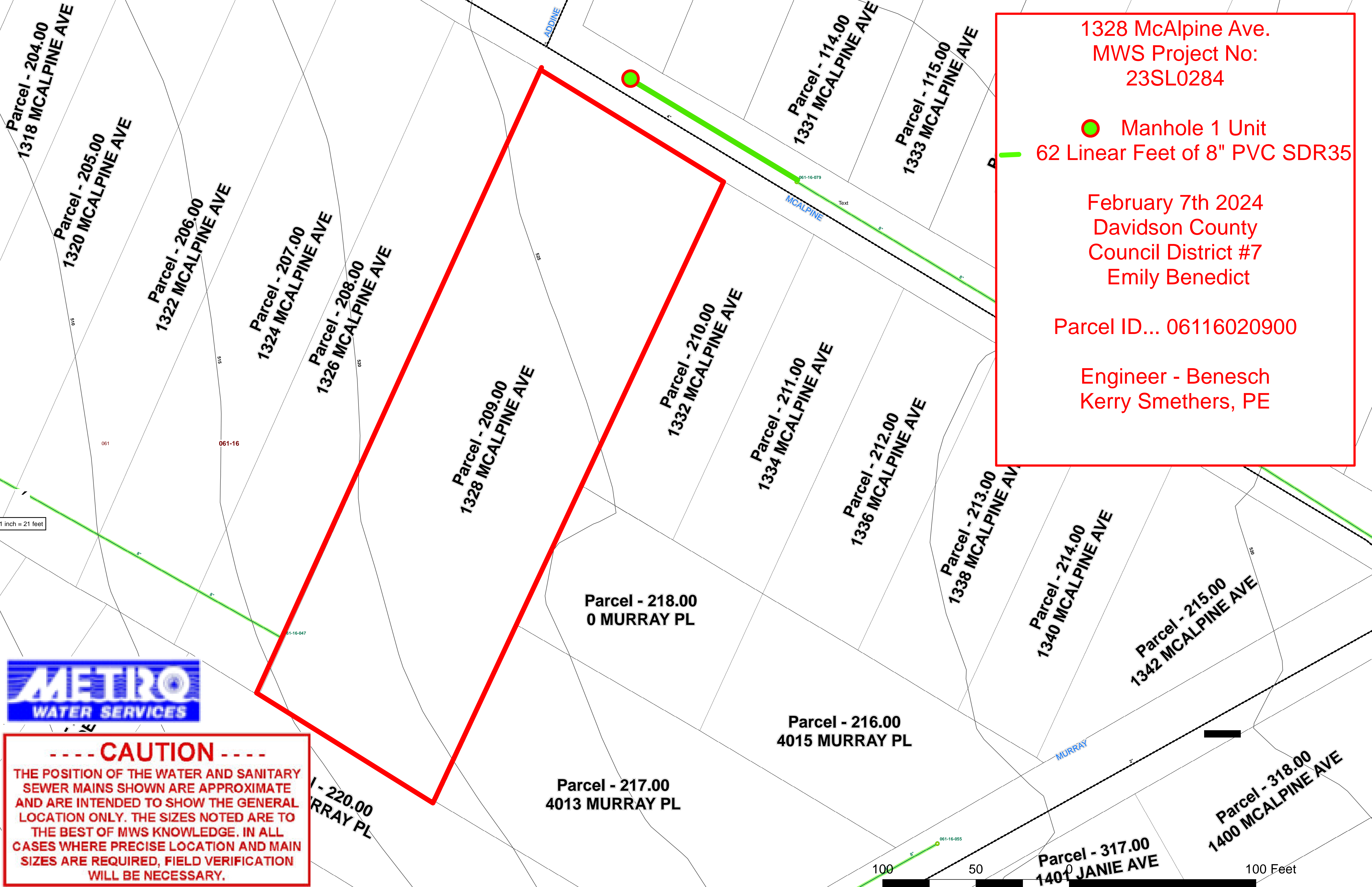


Lisa Milligan
Assistant Director Land Development
Metro Planning Department
cc: *Metro Clerk*

**Re: 1328 McAlpine Ave.
Planning Commission Mandatory Referral 2024M-034ES-001
Council District #07 Emily Benedict, Council Member**

A request for the acceptance of approximately 62 linear feet of eight-inch sanitary sewer main (PVC) and one sanitary sewer manhole to serve the development at 1328 McAlpine Avenue.





1328 McAlpine Ave.
 MWS Project No:
 23SL0284

● Manhole 1 Unit
 62 Linear Feet of 8" PVC SDR35

February 7th 2024
 Davidson County
 Council District #7
 Emily Benedict

Parcel ID... 06116020900

Engineer - Benesch
 Kerry Smethers, PE

1 inch = 21 feet



----- CAUTION -----

THE POSITION OF THE WATER AND SANITARY SEWER MAINS SHOWN ARE APPROXIMATE AND ARE INTENDED TO SHOW THE GENERAL LOCATION ONLY. THE SIZES NOTED ARE TO THE BEST OF MWS KNOWLEDGE. IN ALL CASES WHERE PRECISE LOCATION AND MAIN SIZES ARE REQUIRED, FIELD VERIFICATION WILL BE NECESSARY.

Date: 2/16/2024

