



March 5, 2024

To: Mike Atchison Metro Water Services

**Re: The Depot
Planning Commission Mandatory Referral 2024M-036ES-001
Council District #19 Jacob Kupin, Council Member**

On behalf of the Metropolitan Planning Commission, the following item, referred to the Commission as required by the Metro Charter, has been recommended for *approval* to the Metropolitan Council:

A request for the acceptance of approximately 184 linear feet of four-inch water main (DIP) to serve The Depot development.

The relevant Metro agencies (Metro Parks, Metro Public Works, Metro Water Services, Metro Emergency Communications, the Nashville Electric Service, Metro Finance – Public Property and the Metro Historical Commission) have reviewed the proposal and concur in the recommendation for approval. This request must be approved by the Metro Council to become effective. A sketch showing the location of the request is attached to this letter.

Conditions that apply to this approval: none

This recommendation for approval is given as set forth in the Metropolitan Planning Commission Rules and Procedures. If you have any questions about this matter, please contact Delilah Rhodes at Delilah.Rhodes@nashville.gov or 615-862-7208

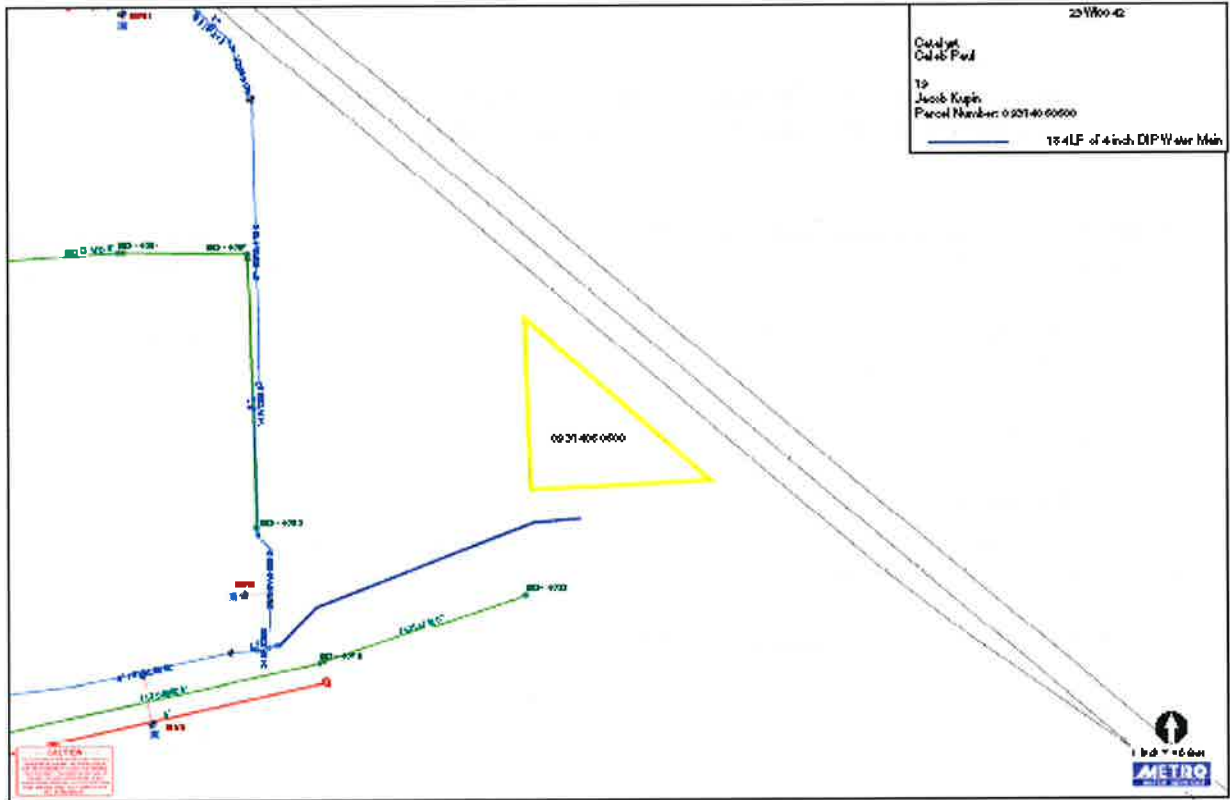
Sincerely,

A handwritten signature in blue ink that reads "Lisa Milligan".

Lisa Milligan
Assistant Director Land Development
Metro Planning Department
cc: *Metro Clerk*

**Re: The Depot
Planning Commission Mandatory Referral 2024M-036ES-001
Council District #19 Jacob Kupin, Council Member**

A request for the acceptance of approximately 184 linear feet of four-inch water main (DIP) to serve The Depot development.

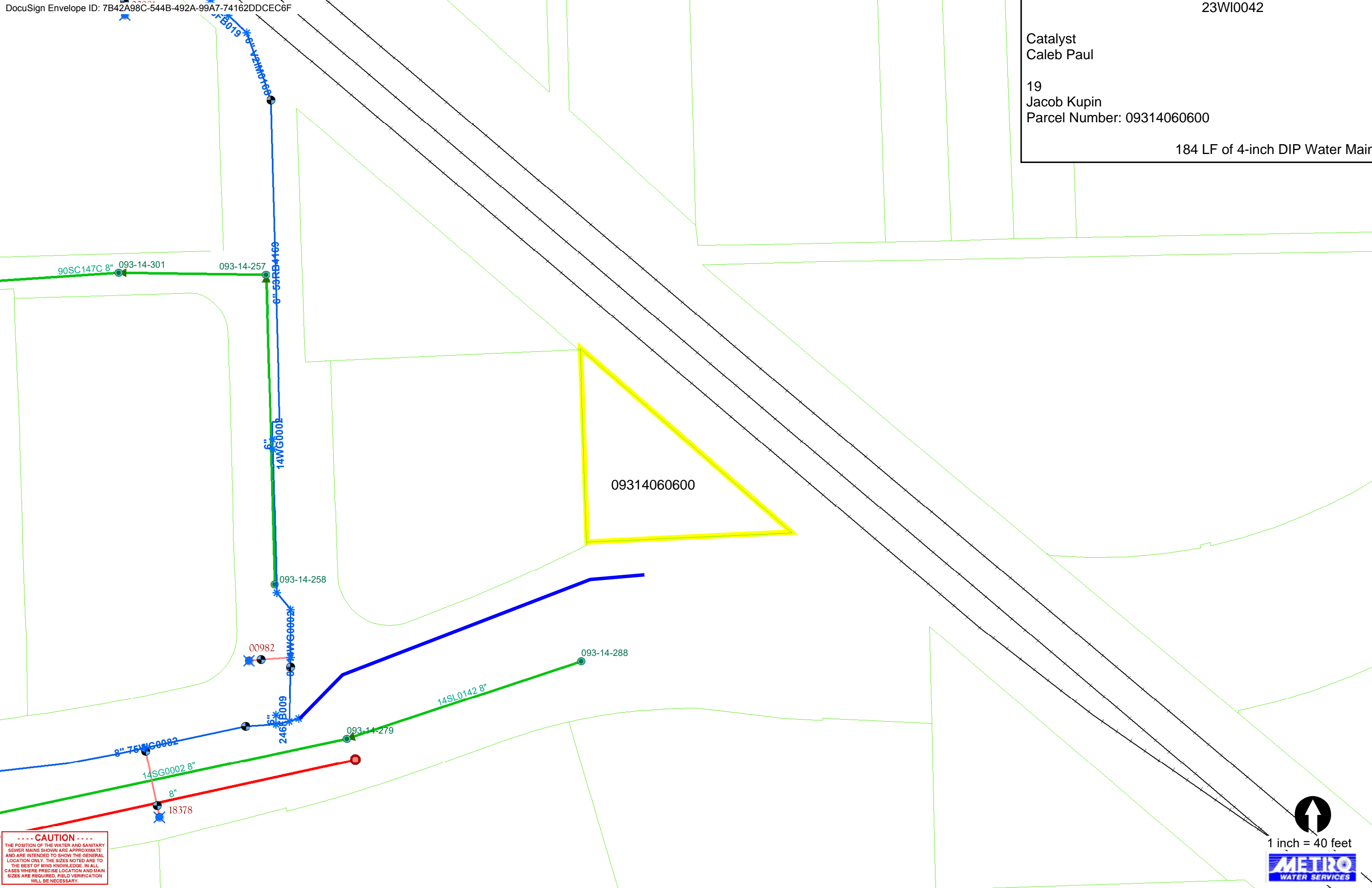


Catalyst
Caleb Paul

19
Jacob Kupin
Parcel Number: 09314060600

184 LF of 4-inch DIP Water Main

09314060600



----- CAUTION -----
 THE POSITION OF THE WATER AND SANITARY
 SEWER MAINS SHOWN ARE APPROXIMATE
 AND ARE INTENDED TO SHOW THE GENERAL
 LOCATION ONLY. THE SIZES NOTED ARE TO
 THE BEST OF MWS KNOWLEDGE. IN ALL
 CASES WHERE PRECISE LOCATION AND MAIN
 SIZES ARE REQUIRED, FIELD VERIFICATION
 WILL BE NECESSARY.

1 inch = 40 feet

