



**METROPOLITAN GOVERNMENT OF NASHVILLE
AND DAVIDSON COUNTY**

Metro Office Building
800 President Ronald Reagan Way
P.O. Box 196300
Nashville, TN 37219-6300

March 27, 2023

To: Stephanie James Metro Water Services

**Re: CANE RIDGE FARMS PHASE 3 SECTION 3
Planning Commission Mandatory Referral # 2023M-045ES-001
Council District #32 Joy Styles, Council Member**

On behalf of the Metropolitan Planning Commission, the following item, referred to the Commission as required by the Metro Charter, has been recommended for *approval* to the Metropolitan Council:

A request for the acceptance of approximately 320 linear feet of eight-inch water main (DIP), one fire hydrant assembly, and approximately 250 linear feet of eight-inch sanitary sewer (PVC), two sanitary sewer manholes, and easements to serve the Cane Ridge Farms Phase 3 Section 3 development.

The relevant Metro agencies (Metro Parks, Metro Public Works, Metro Water Services, Metro Emergency Communications, the Nashville Electric Service, Metro Finance – Public Property and the Metro Historical Commission) have reviewed the proposal and concur in the recommendation for approval. This request must be approved by the Metro Council to become effective. A sketch showing the location of the request is attached to this letter.

Conditions that apply to this approval: none

This recommendation for approval is given as set forth in the Metropolitan Planning Commission Rules and Procedures. If you have any questions about this matter, please contact Delilah Rhodes at delilah.rhodes@nashville.gov or 615-862-7208.

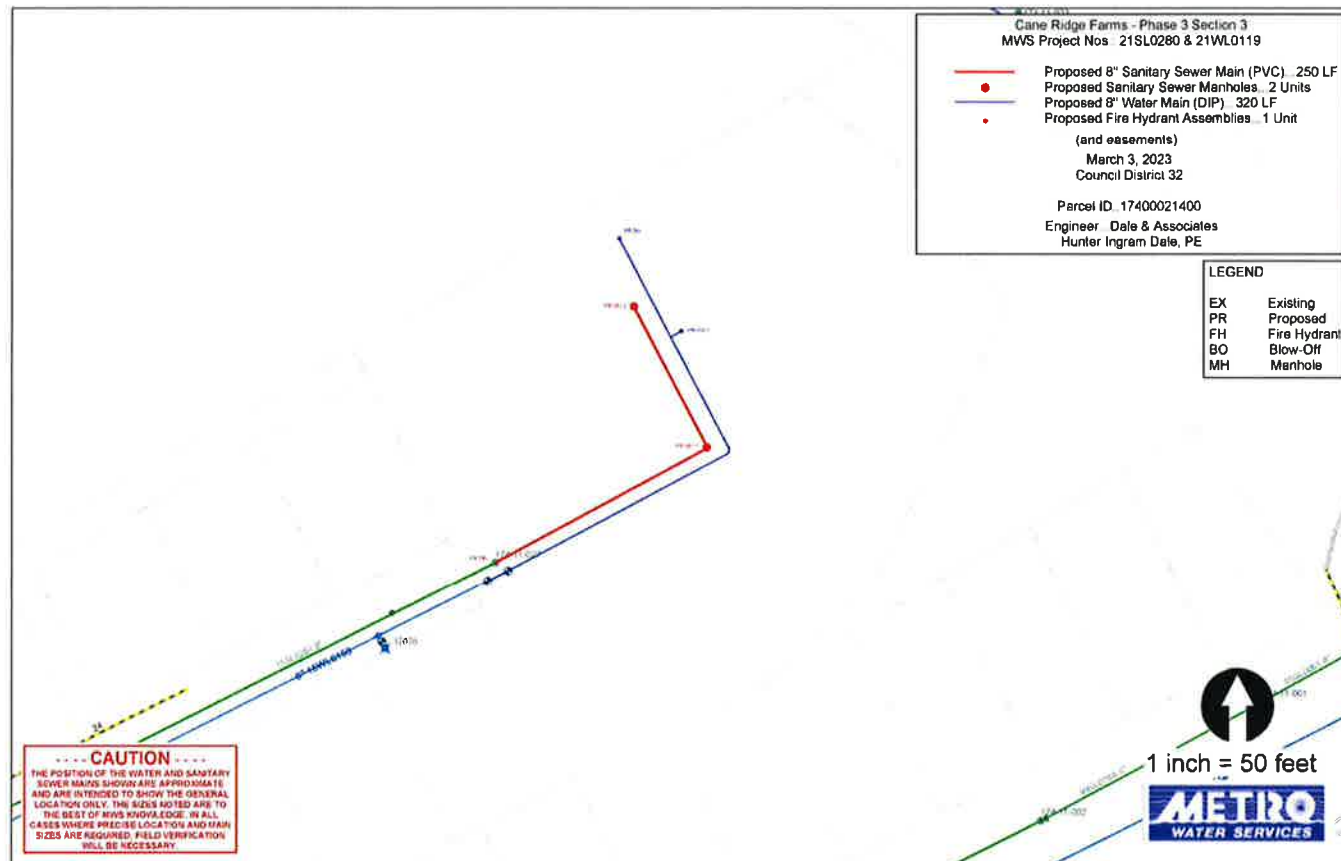
Sincerely,

A handwritten signature in blue ink, appearing to read "Lisa Milligan".

Lisa Milligan
Land Development Manager
Metro Planning Department
cc: Metro Clerk

Re: CANE RIDGE FARMS PHASE 3 SECTION 3
Planning Commission Mandatory Referral # 2023M-045ES-001
Council District #32 Joy Styles, Council Member

A request for the acceptance of approximately 320 linear feet of eight-inch water main (DIP), one fire hydrant assembly, and approximately 250 linear feet of eight-inch sanitary sewer (PVC), two sanitary sewer manholes, and easements to serve the Cane Ridge Farms Phase 3 Section 3 development.



Cane Ridge Farms - Phase 3 Section 3
MWS Project Nos.: 21SL0280 & 21WL0119

- Proposed 8" Sanitary Sewer Main (PVC)...250 LF
- Proposed Sanitary Sewer Manholes...2 Units
- Proposed 8" Water Main (DIP)...320 LF
- Proposed Fire Hydrant Assemblies...1 Unit

(and easements)

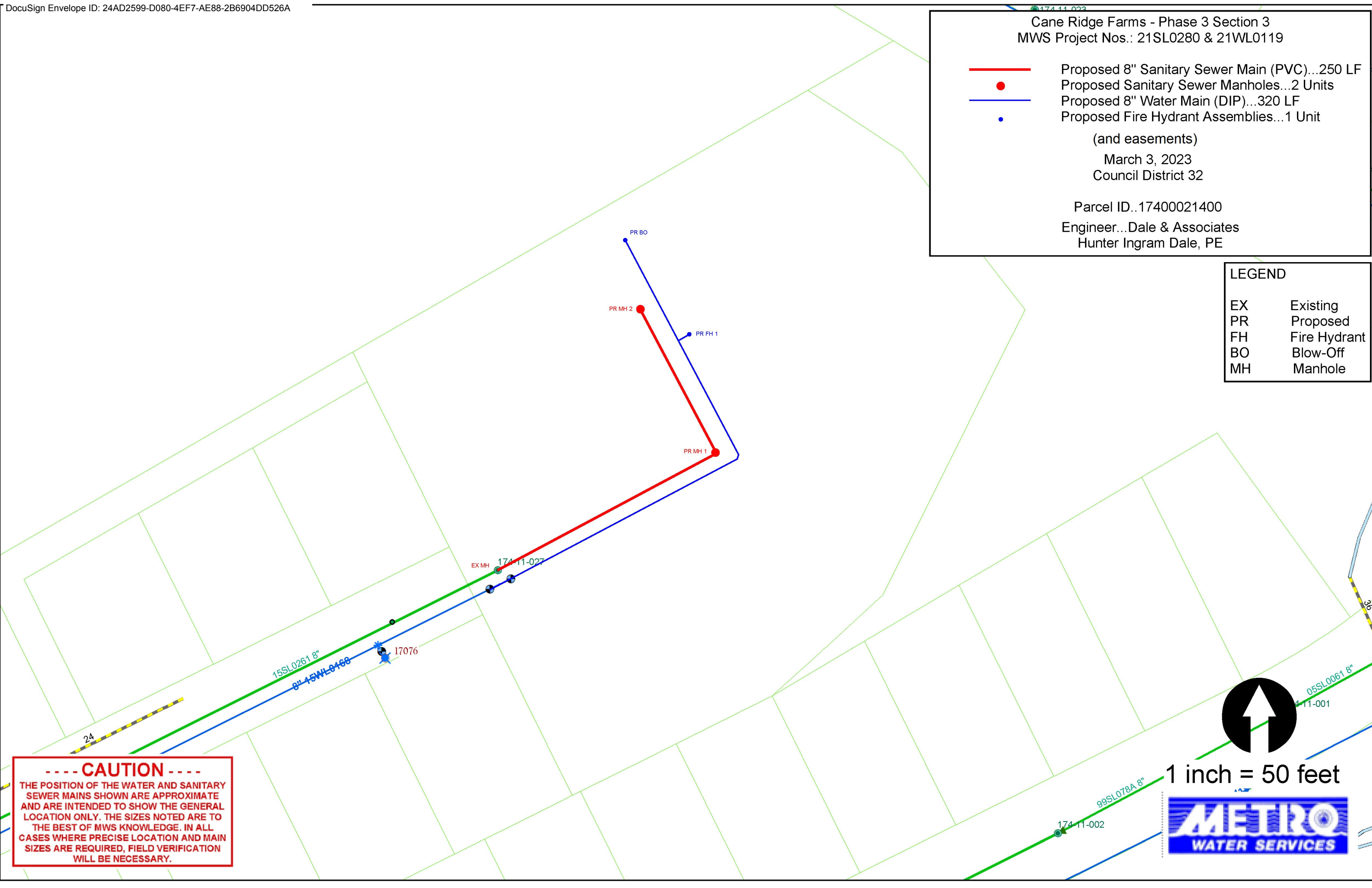
March 3, 2023
Council District 32

Parcel ID..17400021400

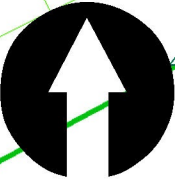
Engineer...Dale & Associates
Hunter Ingram Dale, PE

LEGEND

- | | |
|----|--------------|
| EX | Existing |
| PR | Proposed |
| FH | Fire Hydrant |
| BO | Blow-Off |
| MH | Manhole |



-----CAUTION-----
THE POSITION OF THE WATER AND SANITARY SEWER MAINS SHOWN ARE APPROXIMATE AND ARE INTENDED TO SHOW THE GENERAL LOCATION ONLY. THE SIZES NOTED ARE TO THE BEST OF MWS KNOWLEDGE. IN ALL CASES WHERE PRECISE LOCATION AND MAIN SIZES ARE REQUIRED, FIELD VERIFICATION WILL BE NECESSARY.



1 inch = 50 feet

