



**METROPOLITAN GOVERNMENT OF NASHVILLE  
AND DAVIDSON COUNTY**

Metro Office Building  
800 President Ronald Reagan Way  
P.O. Box 196300  
Nashville, TN 37219-6300

February 2, 2023

To: Edward Thurman Metro Water Services

**Re: BRICK CHURCH PIKE SUBDIVISION  
Planning Commission Mandatory Referral # 2023M-005ES-001  
Council District #03 Jennifer Gamble, Council Member**

On behalf of the Metropolitan Planning Commission, the following item, referred to the Commission as required by the Metro Charter, has been recommended for *approval* to the Metropolitan Council:

*A request for the acceptance of approximately 1,229 linear feet of 8-inch sanitary sewer main (PVC), six sanitary sewer manholes, 987 linear feet of 8-inch water main (DIP), one fire hydrant assembly and easements to serve the Brick Church Pike Subdivision.*

The relevant Metro agencies (Metro Parks, Metro Public Works, Metro Water Services, Metro Emergency Communications, the Nashville Electric Service, Metro Finance – Public Property and the Metro Historical Commission) have reviewed the proposal and concur in the recommendation for approval. This request must be approved by the Metro Council to become effective. A sketch showing the location of the request is attached to this letter.

**Conditions that apply to this approval: none**

This recommendation for approval is given as set forth in the Metropolitan Planning Commission Rules and Procedures. If you have any questions about this matter, please contact Delilah Rhodes at [delilah.rhodes@nashville.gov](mailto:delilah.rhodes@nashville.gov) or 615-862-7208.

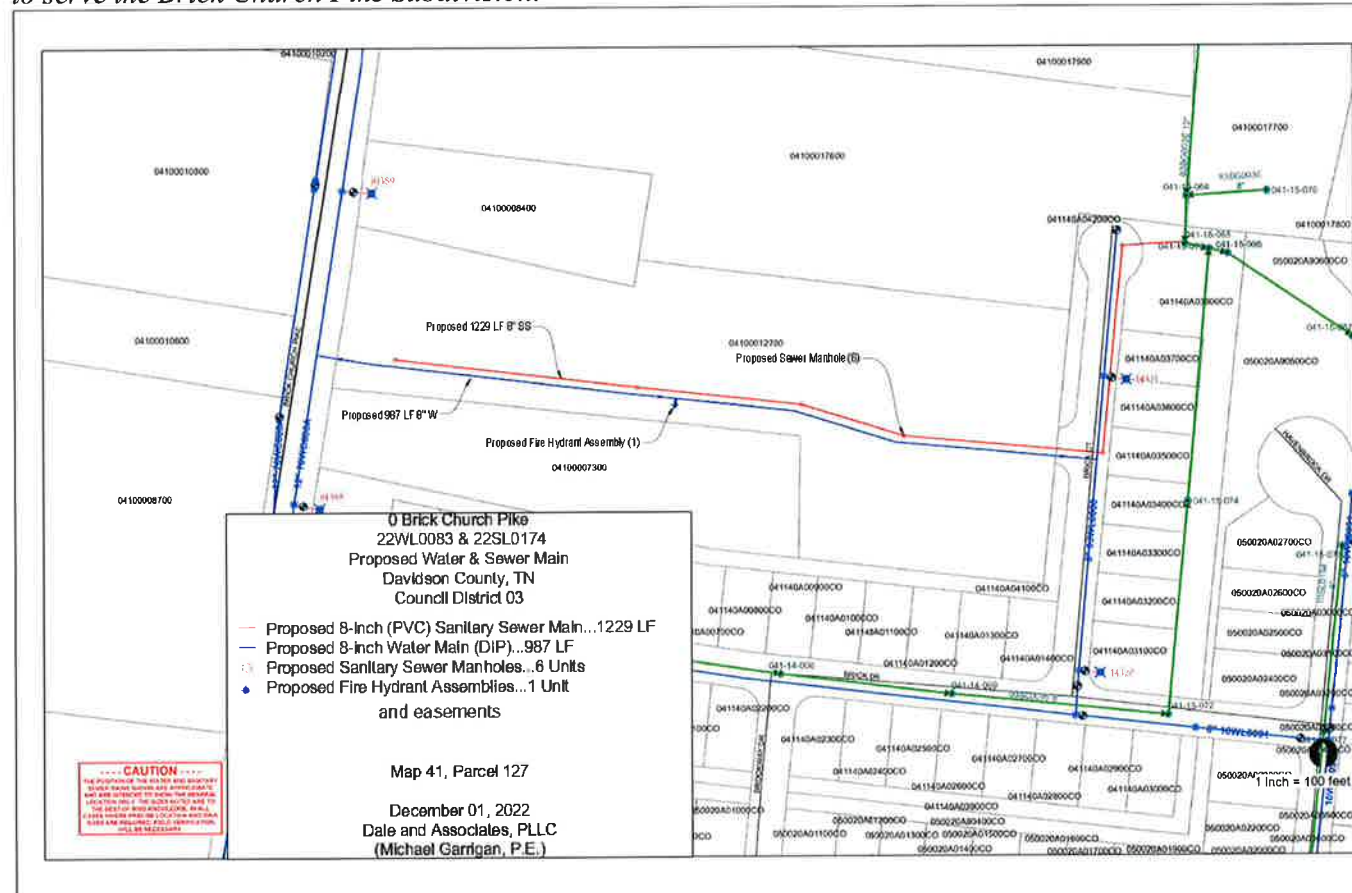
Sincerely,

A handwritten signature in blue ink that reads "Lisa Milligan".

Lisa Milligan  
Land Development Manager  
Metro Planning Department  
cc: Metro Clerk

**Re: BRICK CHURCH PIKE SUBDIVISION**  
**Planning Commission Mandatory Referral # 2023M-005ES-001**  
**Council District #03 Jennifer Gamble, Council Member**

*A request for the acceptance of approximately 1,229 linear feet of 8-inch sanitary sewer main (PVC), six sanitary sewer manholes, 987 linear feet of 8-inch water main (DIP), one fire hydrant assembly and easements to serve the Brick Church Pike Subdivision.*



Map 41, Parcel 127

December 01, 2022

Dale and Associates, PLLC  
(Michael Garrigan, P.E.)

1 inch = 100 feet