



**METROPOLITAN GOVERNMENT OF NASHVILLE  
AND DAVIDSON COUNTY**

Metro Office Building  
800 President Ronald Reagan Way  
P.O. Box 196300  
Nashville, TN 37219-6300

October 19, 2022

To: Stephanie James, Metro Water Services

Re: **THE CHELSEA AT OCEOLA**  
**Planning Commission Mandatory Referral #2022M-157ES-001**  
**Council District #20 Mary Carolyn Roberts, Council Member**

On behalf of the Metropolitan Planning Commission, the following item, referred to the Commission as required by the Metro Charter, has been recommended for *approval* to the Metropolitan Council:

*A request for the abandonment of approximately 180 linear feet of four-inch water main and 188 linear feet of two-inch water main and the acceptance of approximately 374 linear feet of eight inch (DIP) of water main and one sanitary sewer manhole to serve The Chelsea at Oceola development.*

The relevant Metro agencies (Metro Parks, Metro Public Works, Metro Water Services, Metro Emergency Communications, the Nashville Electric Service, Metro Finance – Public Property and the Metro Historical Commission) have reviewed the proposal and concur in the recommendation for approval. This request must be approved by the Metro Council to become effective. A sketch showing the location of the request is attached to this letter.

**Conditions that apply to this approval: none**

This recommendation for approval is given as set forth in the Metropolitan Planning Commission Rules and Procedures. If you have any questions about this matter, please contact Delilah Rhodes at [delilah.rhodes@nashville.gov](mailto:delilah.rhodes@nashville.gov) or 615-862-7208.

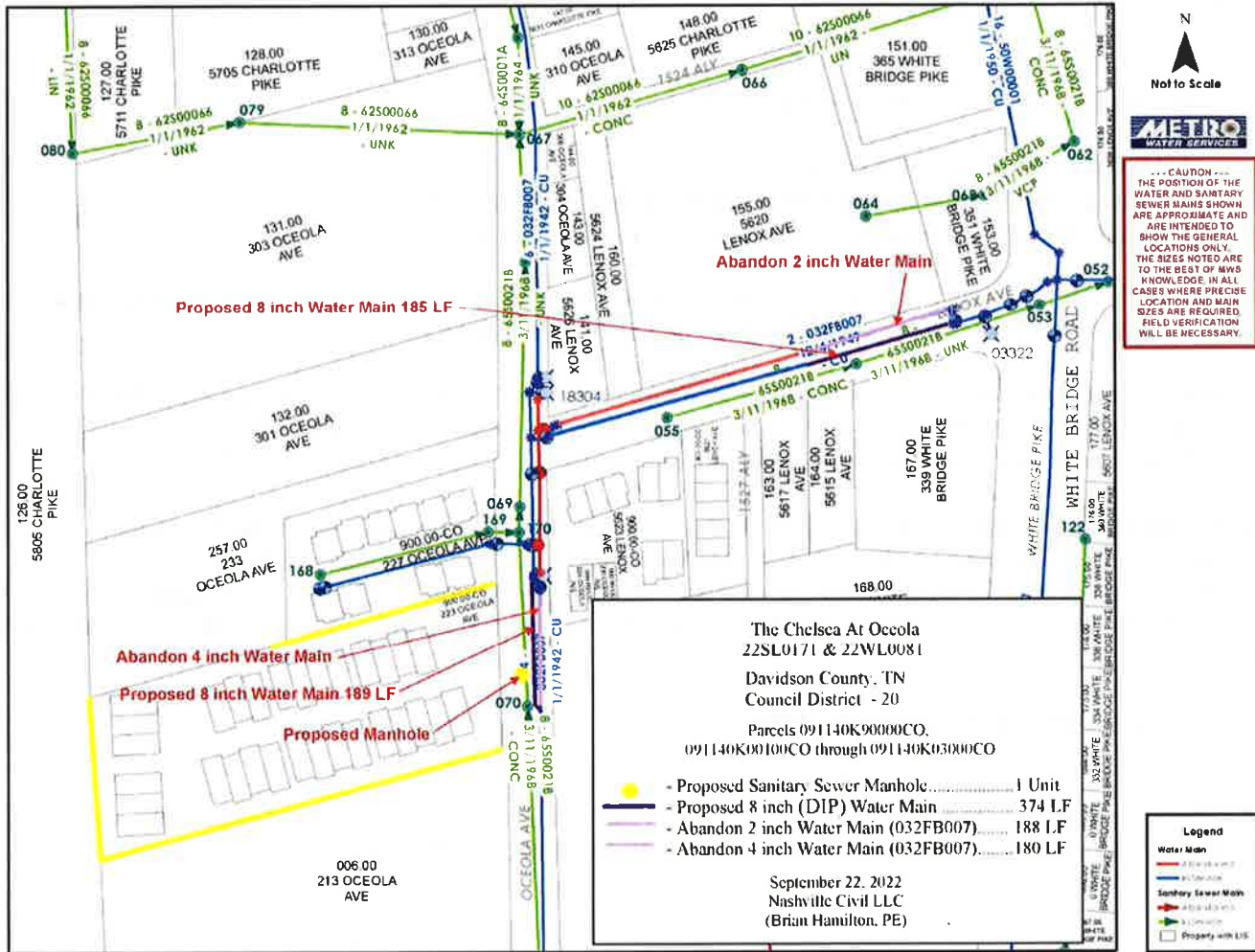
Sincerely,

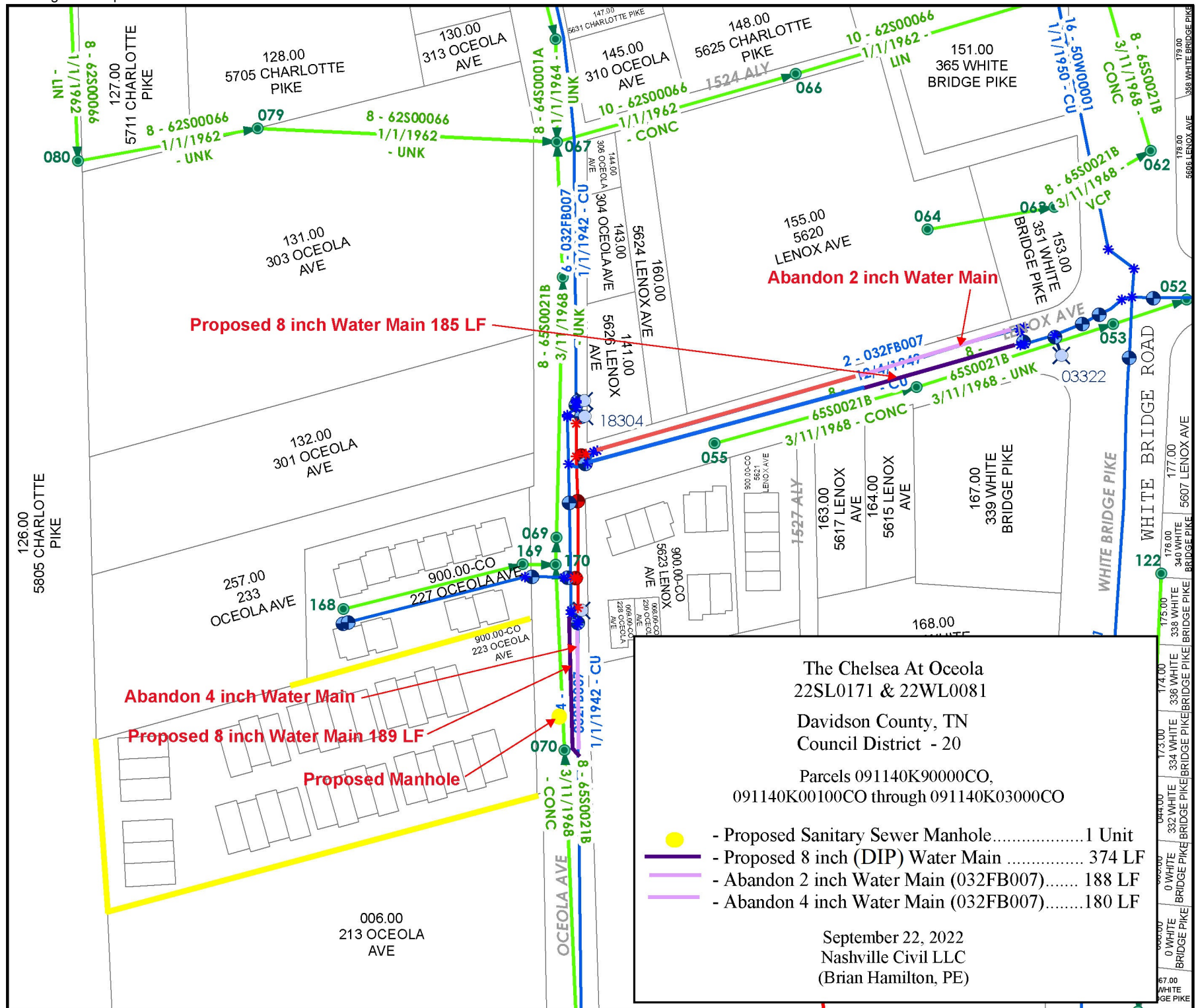
A handwritten signature in blue ink that reads "Lisa Milligan".

Lisa Milligan  
Land Development Manager  
Metro Planning Department  
cc: Metro Clerk

**Re: THE CHELSEA AT OCEOLA**  
**Planning Commission Mandatory Referral #2022M-157ES-001**  
**Council District #20 Mary Carolyn Roberts, Council Member**

*A request for the abandonment of approximately 180 linear feet of four-inch water main and 188 linear feet of two-inch water main and the acceptance of approximately 374 linear feet of eight inch (DIP) of water main and one sanitary sewer manhole to serve The Chelsea at Oceola development.*





--- CAUTION ---  
 THE POSITION OF THE  
 WATER AND SANITARY  
 SEWER MAINS SHOWN  
 ARE APPROXIMATE AND  
 ARE INTENDED TO  
 SHOW THE GENERAL  
 LOCATIONS ONLY.  
 THE SIZES NOTED ARE  
 TO THE BEST OF MWS  
 KNOWLEDGE. IN ALL  
 CASES WHERE PRECISE  
 LOCATION AND MAIN  
 SIZES ARE REQUIRED,  
 FIELD VERIFICATION  
 WILL BE NECESSARY.

#### Legend

- Water Main**
- Abandoned
  - In Service
- Sanitary Sewer Main**
- Abandoned
  - In Service
- Property with LIS