



**METROPOLITAN GOVERNMENT OF NASHVILLE
AND DAVIDSON COUNTY**

Metro Office Building
800 President Ronald Reagan Way
P.O. Box 196300
Nashville, TN 37219-6300

September 15, 2022

To: Mike Atchison, Metro Water Services

**Re: THUNDER DRIVE SUBDIVISION
Planning Commission Mandatory Referral #2022M-134ES-001**

On behalf of the Metropolitan Planning Commission, the following item, referred to the Commission as required by the Metro Charter, has been recommended for *approval* to the Metropolitan Council:

A request for approval for the acceptance of approximately 985 linear feet of 8-inch sanitary sewer main (DIP), 1,378 linear feet of 8-inch sanitary sewer main (PVC), 550 linear feet of 1.5-inch sanitary sewer low pressure main (PVC), 548 linear feet of 2-inch sanitary sewer low pressure main (PVC), and 13 sanitary sewer manholes to serve the Thunder Drive development in Williamson County.

The relevant Metro agencies (Metro Parks, Metro Public Works, Metro Water Services, Metro Emergency Communications, the Nashville Electric Service, Metro Finance – Public Property and the Metro Historical Commission) have reviewed the proposal and concur in the recommendation for approval. This request must be approved by the Metro Council to become effective. A sketch showing the location of the request is attached to this letter.

Conditions that apply to this approval: none

This recommendation for approval is given as set forth in the Metropolitan Planning Commission Rules and Procedures. If you have any questions about this matter, please contact Delilah Rhodes at delilah.rhodes@nashville.gov or 615-862-7208.

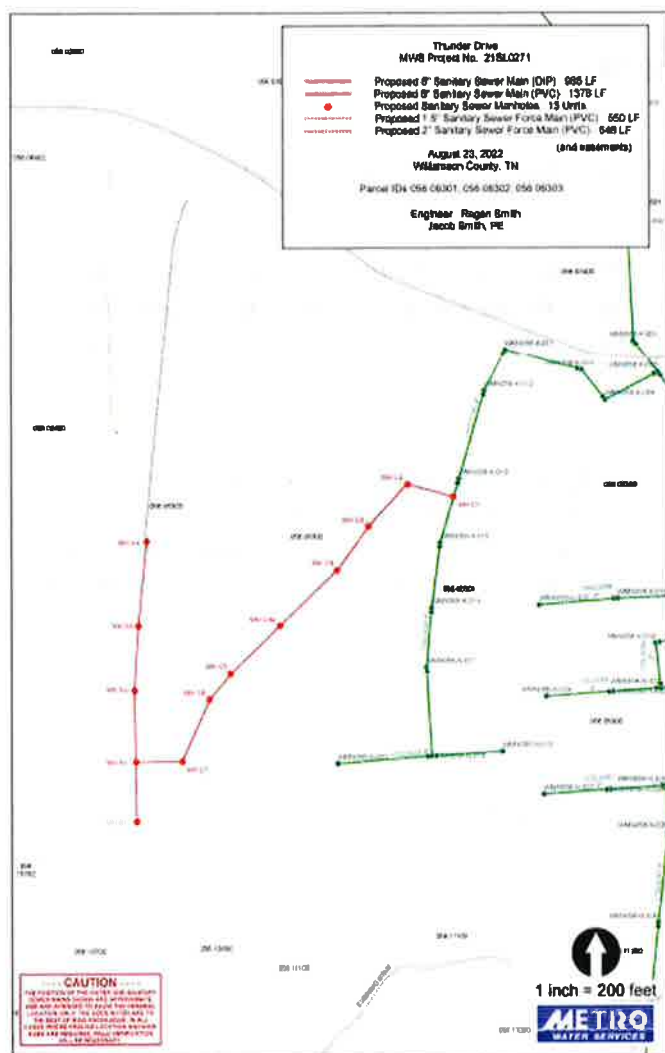
Sincerely,

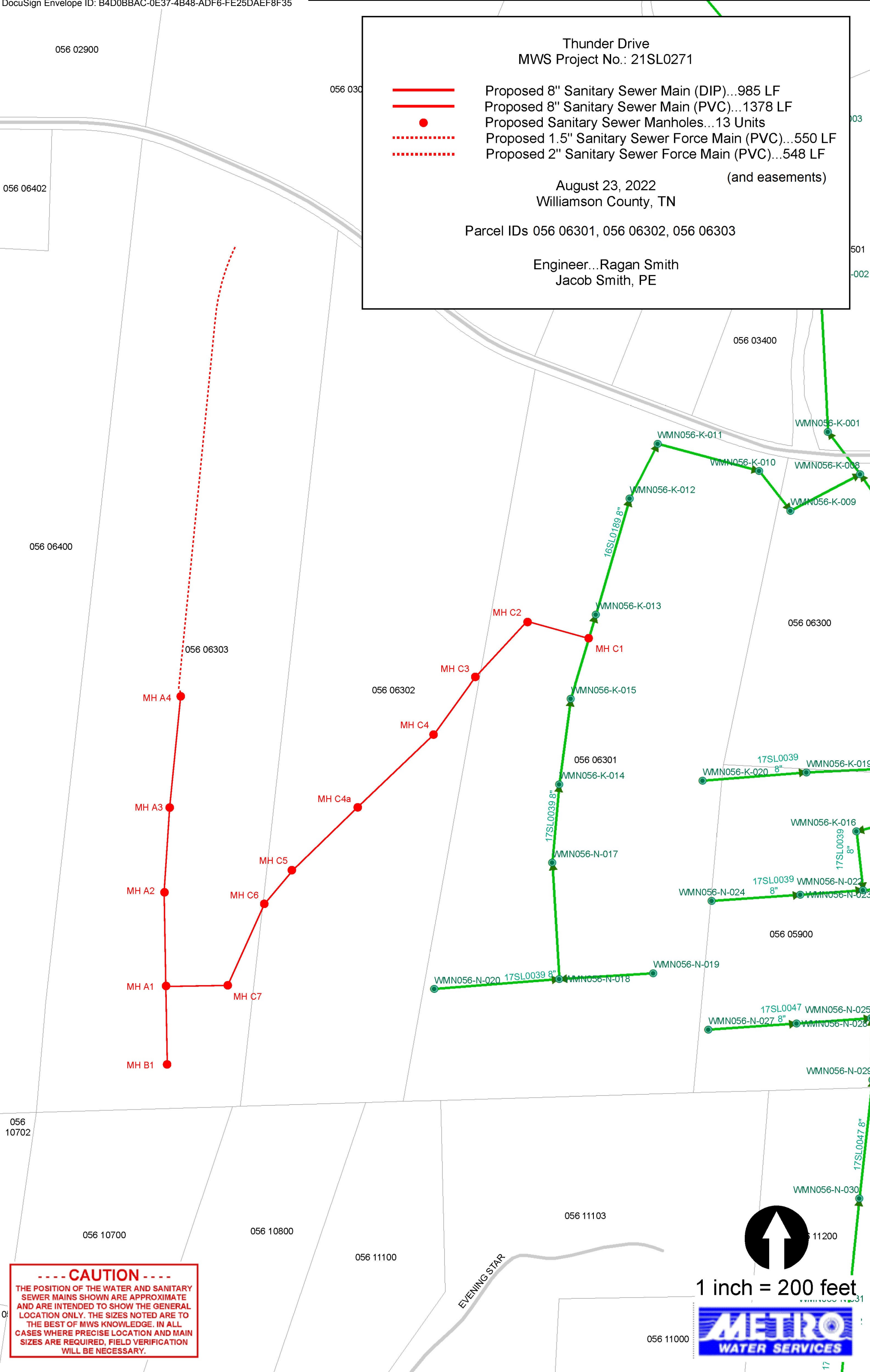
A handwritten signature in blue ink, reading "Lisa Milligan".

Lisa Milligan
Land Development Manager
Metro Planning Department
cc: Metro Clerk

Re: THUNDER DRIVE SUBDIVISION
Planning Commission Mandatory Referral #2022M-134ES-001

A request for approval for the acceptance of approximately 985 linear feet of 8-inch sanitary sewer main (DIP), 1,378 linear feet of 8-inch sanitary sewer main (PVC), 550 linear feet of 1.5-inch sanitary sewer low pressure main (PVC), 548 linear feet of 2-inch sanitary sewer low pressure main (PVC), and 13 sanitary sewer manholes to serve the Thunder Drive development in Williamson County.





Thunder Drive

MWS Project No.: 21SL0271

Proposed 8" Sanitary Sewer Main (DIP)...985 LF

Proposed 8" Sanitary Sewer Main (PVC)...1378 LF

Proposed Sanitary Sewer Manholes...13 Units

Proposed 1.5" Sanitary Sewer Force Main (PVC)...550 LF

Proposed 2" Sanitary Sewer Force Main (PVC)...548 LF

August 23, 2022

Williamson County, TN

Parcel IDs 056 06301, 056 06302, 056 06303

Engineer...Ragan Smith

Jacob Smith, PE

(and easements)

-----CAUTION-----
THE POSITION OF THE WATER AND SANITARY SEWER MAINS SHOWN ARE APPROXIMATE AND ARE INTENDED TO SHOW THE GENERAL LOCATION ONLY. THE SIZES NOTED ARE TO THE BEST OF MWS KNOWLEDGE. IN ALL CASES WHERE PRECISE LOCATION AND MAIN SIZES ARE REQUIRED, FIELD VERIFICATION WILL BE NECESSARY.

1 inch = 200 feet

METRO

WATER SERVICES