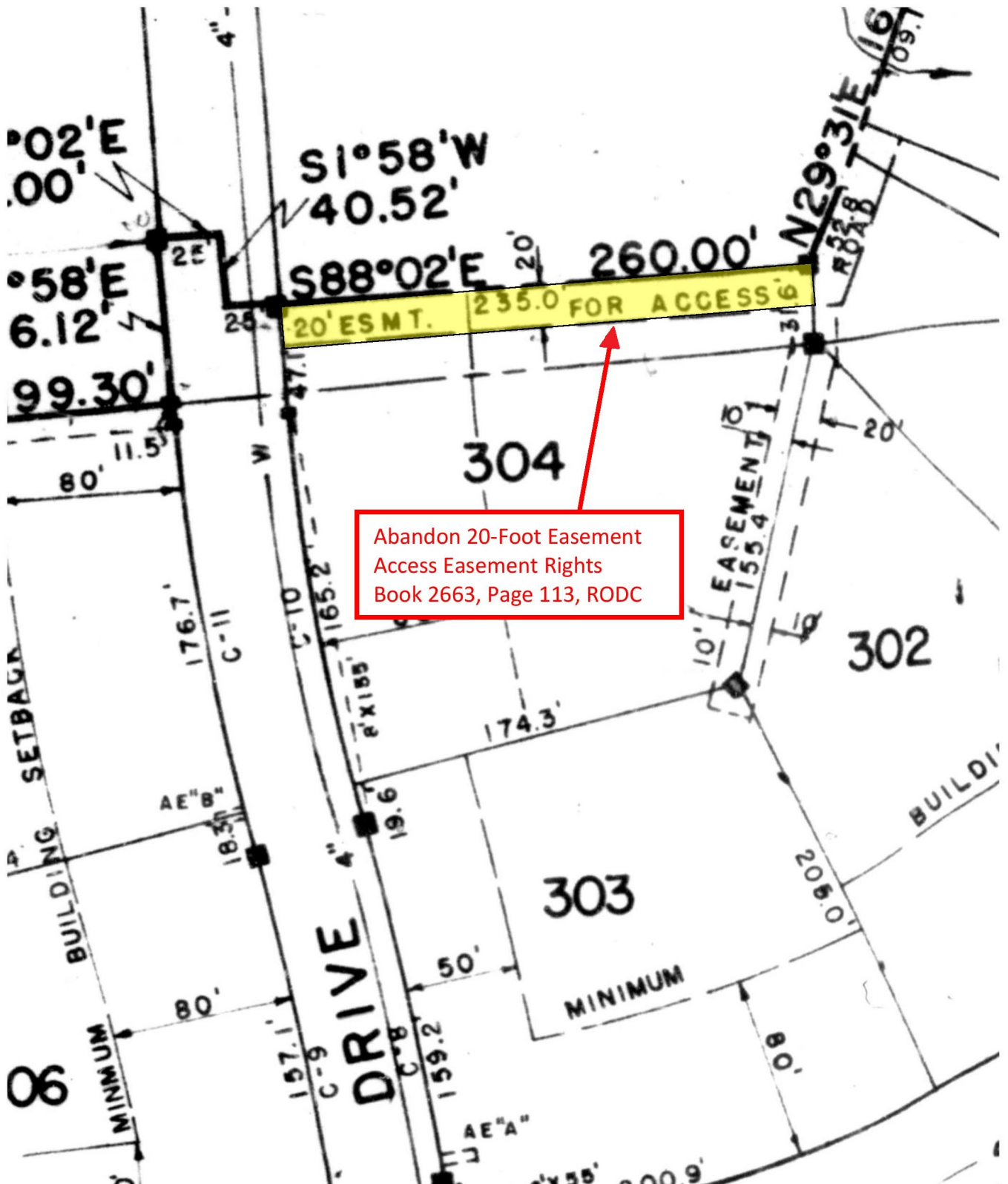


# Abandon Easement Rights

532 Lemont Drive  
Tax Map 61-01, Parcel 42





**METROPOLITAN GOVERNMENT  
OF NASHVILLE AND DAVIDSON COUNTY**

Planning Department  
Metro Office Building  
800 Second Avenue South  
Nashville, Tennessee 37201

January 24, 2022

To: Mike Atchison, Metro Water Services

**Re: 532 Lemont Drive Abandon Access Easement  
Planning Commission Mandatory Referral #2022M-012ES-001  
Council District #08 – Nancy VanReece, Council Member**

On behalf of the Metropolitan Planning Commission, the following item, referred to the Commission as required by the Metro Charter, has been recommended for *approval* to the Metropolitan Council:

*A request for the abandonment of the 20-foot access easement along the northern property line at 532 Lemont Drive. The remaining Public Utility Easements are retained (see sketch for details).*

The relevant Metro agencies (Metro Parks, Metro Public Works, Metro Water Services, Metro Emergency Communications, the Nashville Electric Service, Metro Finance – Public Property and the Metro Historical Commission) have reviewed the proposal and concur in the recommendation for approval. This request must be approved by the Metro Council to become effective. A sketch showing the location of the request is attached to this letter.

**Conditions that apply to this approval: None.**

This recommendation for approval is given as set forth in the Metropolitan Planning Commission Rules and Procedures. If you have any questions about this matter, please contact Michelle Hollingsworth at [michelle.hollingsworth@nashville.gov](mailto:michelle.hollingsworth@nashville.gov) or 615-862-7197.

Sincerely,

A handwritten signature in black ink that reads 'Robert Leeman'.

Robert Leeman  
Deputy Director  
Metro Planning Department  
cc: *Metro Clerk*

**Re: 532 Lemont Drive Abandon Access Easement**  
**Planning Commission Mandatory Referral #2022M-012ES-001**  
Council District #08 – Nancy VanReece, Council Member

*A request for the abandonment of the 20-foot access easement along the northern property line at 532 Lemont Drive. The remaining Public Utility Easements are retained (see sketch for details).*

### Abandon Easement Rights

532 Lemont Drive  
Tax Map 61-01, Parcel 42

