



**METROPOLITAN GOVERNMENT OF NASHVILLE  
AND DAVIDSON COUNTY**

Metro Office Building  
800 President Ronald Reagan Way  
P.O. Box 196300  
Nashville, TN 37219-6300

November 30, 2022

To: Edward Thurman Metro Water Services

**Re: 2830 LEBANON PIKE DEVELOPMENT  
Planning Commission Mandatory Referral #2022M-181ES-001  
Council District #15 Jeff Syracuse, Council Member**

On behalf of the Metropolitan Planning Commission, the following item, referred to the Commission as required by the Metro Charter, has been recommended for *approval* to the Metropolitan Council:

*A request for the abandonment of approximately 131 linear feet of eight-inch sanitary sewer main, two sanitary sewer manholes and easements to serve the development at 2830 Lebanon Pike. (see sketch for details).*

The relevant Metro agencies (Metro Parks, Metro Public Works, Metro Water Services, Metro Emergency Communications, the Nashville Electric Service, Metro Finance – Public Property and the Metro Historical Commission) have reviewed the proposal and concur in the recommendation for approval. This request must be approved by the Metro Council to become effective. A sketch showing the location of the request is attached to this letter.

**Conditions that apply to this approval: none**

This recommendation for approval is given as set forth in the Metropolitan Planning Commission Rules and Procedures. If you have any questions about this matter, please contact Delilah Rhodes at [delilah.rhodes@nashville.gov](mailto:delilah.rhodes@nashville.gov) or 615-862-7208.

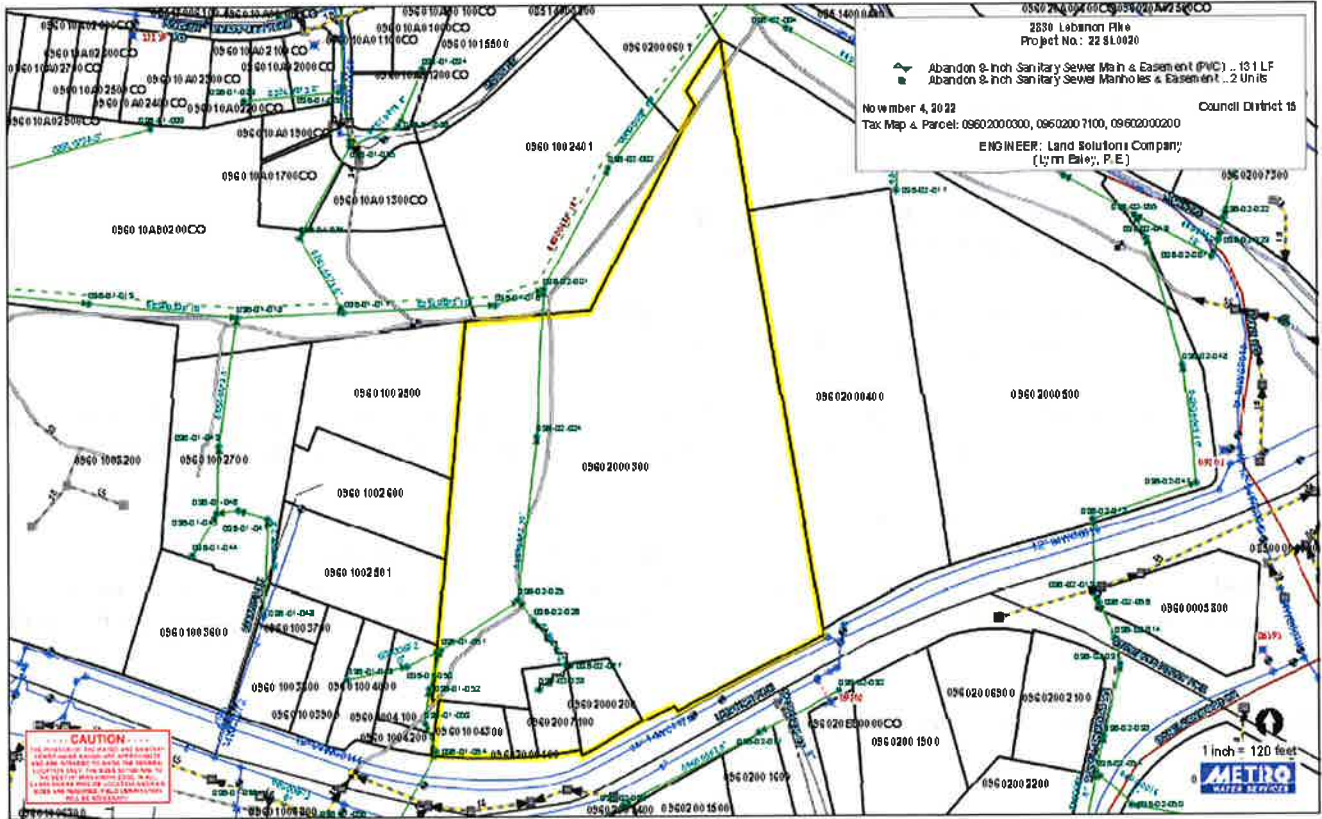
Sincerely,

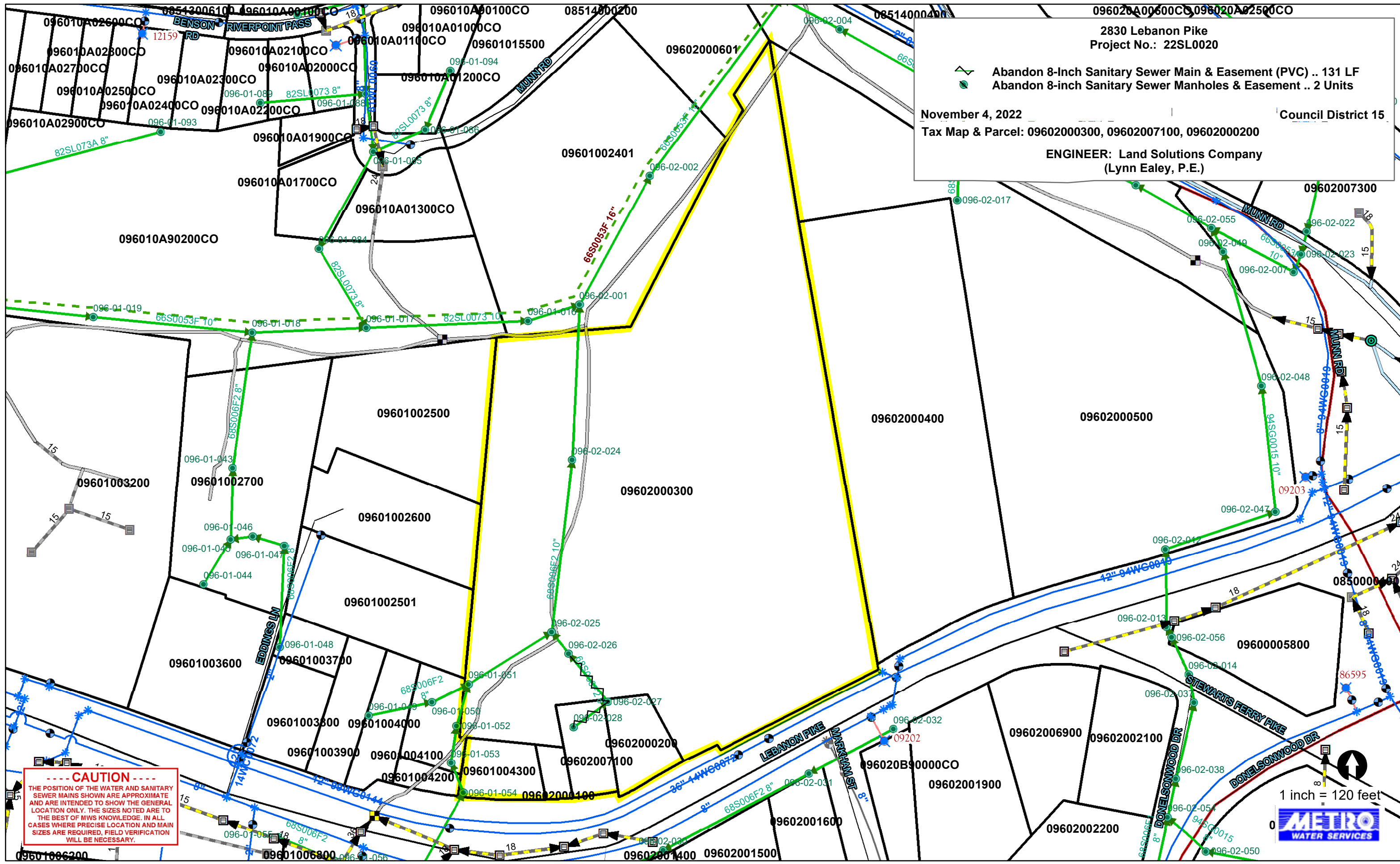
A handwritten signature in blue ink, appearing to read "Lisa Milligan".

Lisa Milligan  
Land Development Manager  
Metro Planning Department  
cc: *Metro Clerk*

**Re: 2830 LEBANON PIKE DEVELOPMENT**  
**Planning Commission Mandatory Referral #2022M-181ES-001**  
**Council District #15 Jeff Syracuse, Council Member**

*A request for the abandonment of approximately 131 linear feet of eight-inch sanitary sewer main, two sanitary sewer manholes and easements to serve the development at 2830 Lebanon Pike. (see sketch for details).*





2830 Lebanon Pike  
Project No.: 22SL0020

November 4, 2022  
Tax Map & Parcel: 09602000300, 09602007100, 09602000200

Council District 15

ENGINEER: Land Solutions Company  
(Lynn Ealey, P.E.)

**----- CAUTION -----**  
THE POSITION OF THE WATER AND SANITARY SEWER MAINS SHOWN ARE APPROXIMATE AND ARE INTENDED TO SHOW THE GENERAL LOCATION ONLY. THE SIZES NOTED ARE TO THE BEST OF MWS KNOWLEDGE. IN ALL CASES WHERE PRECISE LOCATION AND MAIN SIZES ARE REQUIRED, FIELD VERIFICATION WILL BE NECESSARY.

1 inch = 120 feet