

# METROPOLITAN GOVERNMENT OF NASHVILLE AND DAVIDSON COUNTY



Metropolitan Historical Commission  
Metropolitan Historic Zoning Commission  
Sunnyside in Sevier Park  
1113 Kirkwood Avenue  
Nashville, Tennessee 37204  
Telephone: (615) 862-7970

To: Metropolitan Council  
From: Metropolitan Historical Commission, Staff  
Date: April 8, 2025  
Re: ORDINANCE NO. BL2025 - 784

An ordinance authorizing the renaming of a portion of Alley #1892 right-of-way, from Meade Avenue to Alley #1917, to "Frankie Alley." (Proposal Number 2025M-001SR-001)



Figure 1: Parcel map showing segment of Alley #1892 to be renamed. Exhibit for 2025M-001SR-001.  
Source: Metropolitan Planning Department.

Alley #1892 appears as an unnamed and unnumbered alley measuring nine feet in width on the 1906 plat for Map of College Heights (Figs. 1 & 2).<sup>1</sup> The alley, along with a narrow strip of property described as “off 3 feet reserved,” marks the southern boundary of the plat.

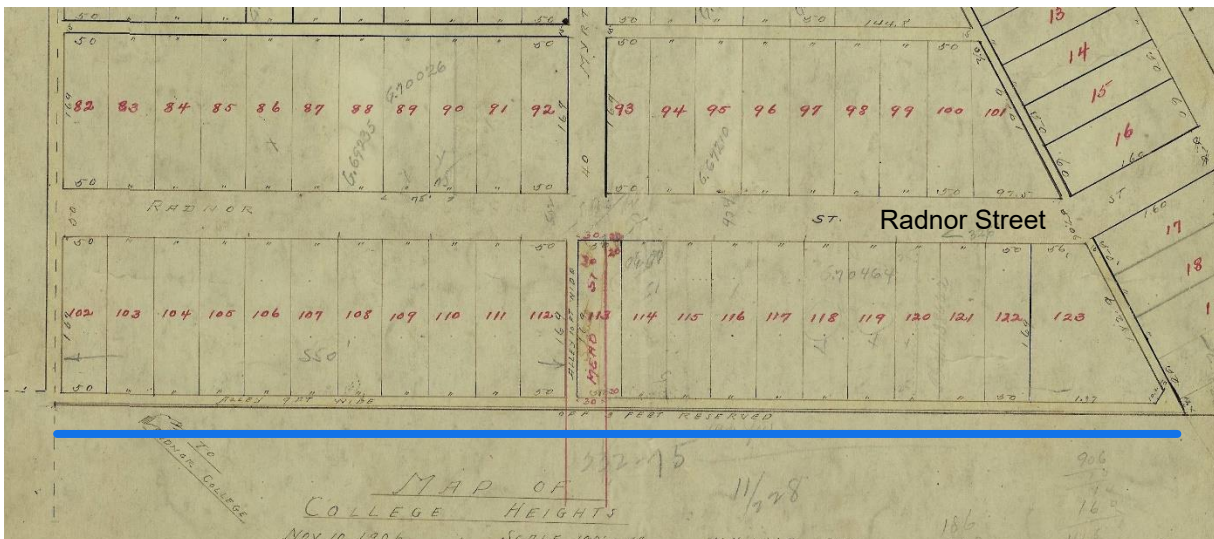


Figure 2: Map of College Heights, 1906, showing alley (near blue line). Source: Metropolitan Government Archives.

The same 9-ft alley and 3-ft strip also appear along the northern boundary of the 1908 plat for Map of Patterson’s Subdivision of Maple Hill, which adjoins the southern boundary of College Heights (Fig. 3).<sup>2</sup>

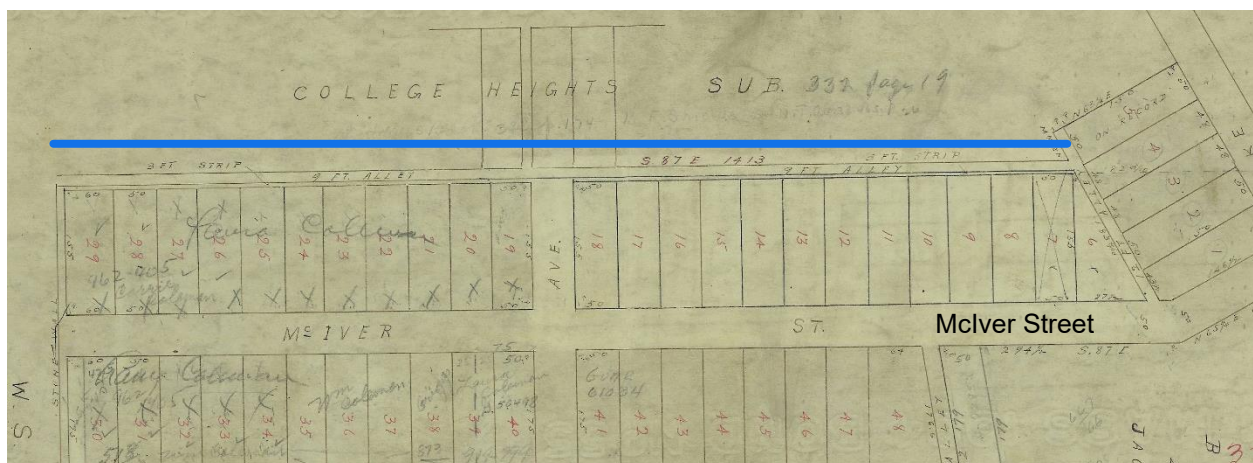


Figure 3: Map of Patterson's Sub of Maple Hill, 1908, showing alley (near blue line). Source: Metropolitan Government Archives.

<sup>1</sup> Map of College Heights, Plat Book 332, p 19, recorded on December 1, 1906, RODC.

<sup>2</sup> Map of Patterson’s Subdivision of Maple Hill, Plat Book 332, p 75, recorded on August 28, 1908, RODC.

All 123 lots in College Heights sold at auction on Thanksgiving morning in 1906.<sup>3</sup> The plat was named “College Heights” for its proximity to Radnor College, a women’s school founded by Andrew Nelson Eshman in 1906 and located on Nolensville Pike, south of Patterson’s Subdivision of Maple Hill.<sup>4</sup> The College Heights plat included four new streets: Radnor, Morton, Timmons, and Myrtle (later renamed Meade). The Davidson County Highway Commission officially mapped and accepted these streets as county roads in 1919; presumably, the acceptance also included the alleys contained within the plat.<sup>5</sup> Historical Commission staff was unable to determine when the Metropolitan Government instituted the numeric identification of alleys in Metro Nashville or when the subject alley became identified as Alley No. 1892.

---

<sup>3</sup> “Every Lot in College Heights,” *Nashville Banner*, November 30, 1906, 8.

<sup>4</sup> Mike Slate, “A.N. Eshman and Radnor College,” *Nashville Historical Newsletter*, October 14, 2021, <https://nashvillehistoricalnewsletter.com/2021/10/14/a-n-eshman-and-radnor-college/> <accessed 2025 April 7>; *Radnor College, Nashville, Tenn*, 1910, postcard, Special Collections Division of the Nashville Public Library, <https://nashville.contentdm.oclc.org/digital/collection/nr/id/819/rec/1> <accessed 2025 April 7>.

<sup>5</sup> Davidson County Highway Commission, *Code, Property of Davidson County Highway Commission, Effective October 1, 1960*, 93-96. County Committee (Finley M. Dorris, Samuel G. Douglas, James R. Allen, and John Langham) and Engineers (Freeland, Roberts & Co.), *General Road Map, Davidson County, Tenn.* 1919. Metropolitan Government Archives.