

2425/2427 Brick Church Pike  
MWS Project No:  
22WL0148 & 22SL0299

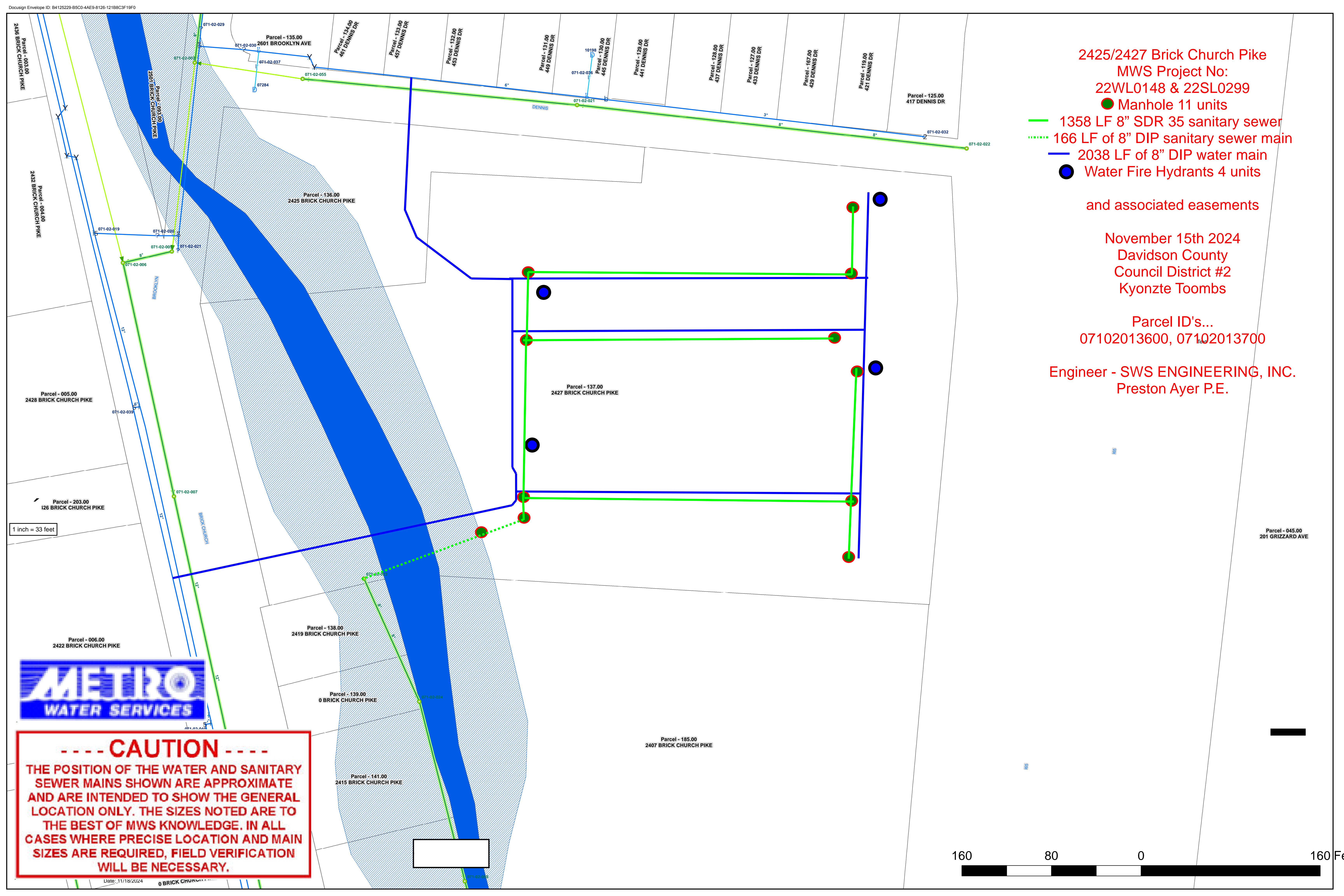
- Manhole 11 units
- 1358 LF 8" SDR 35 sanitary sewer
- - - 166 LF of 8" DIP sanitary sewer main
- 2038 LF of 8" DIP water main
- Water Fire Hydrants 4 units

and associated easements

November 15th 2024  
Davidson County  
Council District #2  
Kyonzte Toombs

Parcel ID's...  
07102013600, 07102013700

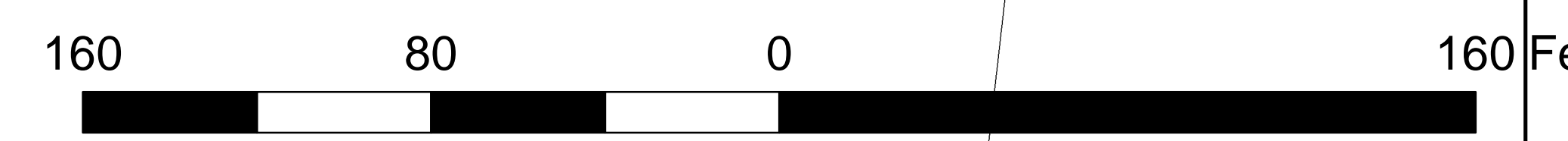
Engineer - SWS ENGINEERING, INC.  
Preston Ayer P.E.



1 inch = 33 feet



**----- CAUTION -----**  
 THE POSITION OF THE WATER AND SANITARY  
 SEWER MAINS SHOWN ARE APPROXIMATE  
 AND ARE INTENDED TO SHOW THE GENERAL  
 LOCATION ONLY. THE SIZES NOTED ARE TO  
 THE BEST OF MWS KNOWLEDGE. IN ALL  
 CASES WHERE PRECISE LOCATION AND MAIN  
 SIZES ARE REQUIRED, FIELD VERIFICATION  
 WILL BE NECESSARY.





December 31, 2024

To: Stephanie James Metro Water Services

**Re: City View at Nobel Heights  
Planning Commission Mandatory Referral 2024M-147ES-001  
Council District # 02 Kyonzte Toombs, Council Member**

On behalf of the Metropolitan Planning Commission, the following item, referred to the Commission as required by the Metro Charter, has been recommended for *approval* to the Metropolitan Council:

*A request for the acceptance of approximately 1,358 linear feet of eight-inch sanitary sewer mains (PVC), 166 linear feet of eight-inch sanitary sewer main (DIP), 11 sanitary sewer manholes and approximately 2,038 linear feet of eight-inch water mains (DIP), four fire hydrant assemblies and any associated easements to serve the City View at Noble Heights development.*

The relevant Metro agencies (Metro Parks, Nashville Department of Transportation, Metro Water Services, Metro Emergency Communications, the Nashville Electric Service, Metro Finance – Public Property and the Metro Historical Commission) have reviewed the proposal and concur in the recommendation for approval. This request must be approved by the Metro Council to become effective. A sketch showing the location of the request is attached to this letter.

**Conditions that apply to this approval: none**

This recommendation for approval is given as set forth in the Metropolitan Planning Commission Rules and Procedures. If you have any questions about this matter, please contact Delilah Rhodes at [Delilah.Rhodes@nashville.gov](mailto:Delilah.Rhodes@nashville.gov) or 615-862-7208

Sincerely,

A handwritten signature in blue ink, appearing to read "Lisa Milligan".

Lisa Milligan  
Assistant Director Land Development  
Metro Planning Department  
cc: Metro Clerk

**Re: City View at Nobel Heights  
Planning Commission Mandatory Referral 2024M-147ES-001  
Council District # 02 Kyonzté Toombs, Council Member**

*A request for the acceptance of approximately 1,358 linear feet of eight-inch sanitary sewer mains (PVC), 166 linear feet of eight-inch sanitary sewer main (DIP), 11 sanitary sewer manholes and approximately 2,038 linear feet of eight-inch water mains (DIP), four fire hydrant assemblies and any associated easements to serve the City View at Noble Heights development.*

