



**METROPOLITAN GOVERNMENT OF NASHVILLE
AND DAVIDSON COUNTY**

Metro Office Building
800 President Ronald Reagan Way
P.O. Box 196300
Nashville, TN 37219-6300

November 30, 2022

To: Edward Thurman Metro Water Services

**Re: 1015 TULIP GROVE ROAD
Planning Commission Mandatory Referral #2022M-177ES-001
Council District #12 Erin Evans, Council Member**

On behalf of the Metropolitan Planning Commission, the following item, referred to the Commission as required by the Metro Charter, has been recommended for *approval* to the Metropolitan Council:

A request for the acceptance of approximately 245 linear feet of eight-inch sanitary sewer main (PVC), two sanitary sewer manholes, and easements to serve the development at 1015 Tulip Grove Road. (see sketch for details).

The relevant Metro agencies (Metro Parks, Metro Public Works, Metro Water Services, Metro Emergency Communications, the Nashville Electric Service, Metro Finance – Public Property and the Metro Historical Commission) have reviewed the proposal and concur in the recommendation for approval. This request must be approved by the Metro Council to become effective. A sketch showing the location of the request is attached to this letter.

Conditions that apply to this approval: none

This recommendation for approval is given as set forth in the Metropolitan Planning Commission Rules and Procedures. If you have any questions about this matter, please contact Delilah Rhodes at delilah.rhodes@nashville.gov or 615-862-7208.

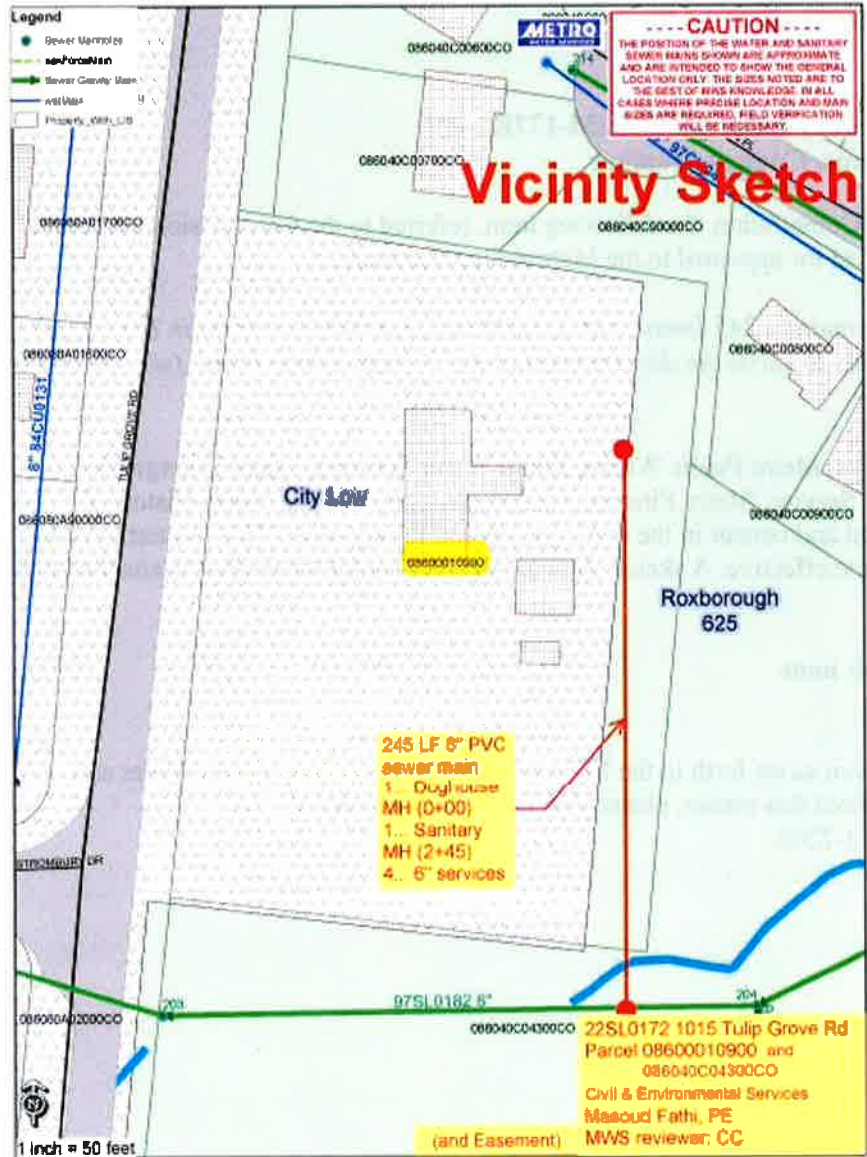
Sincerely,

A handwritten signature in blue ink, appearing to read 'Lisa Milligan'.


Lisa Milligan
Land Development Manager
Metro Planning Department
cc: *Metro Clerk*

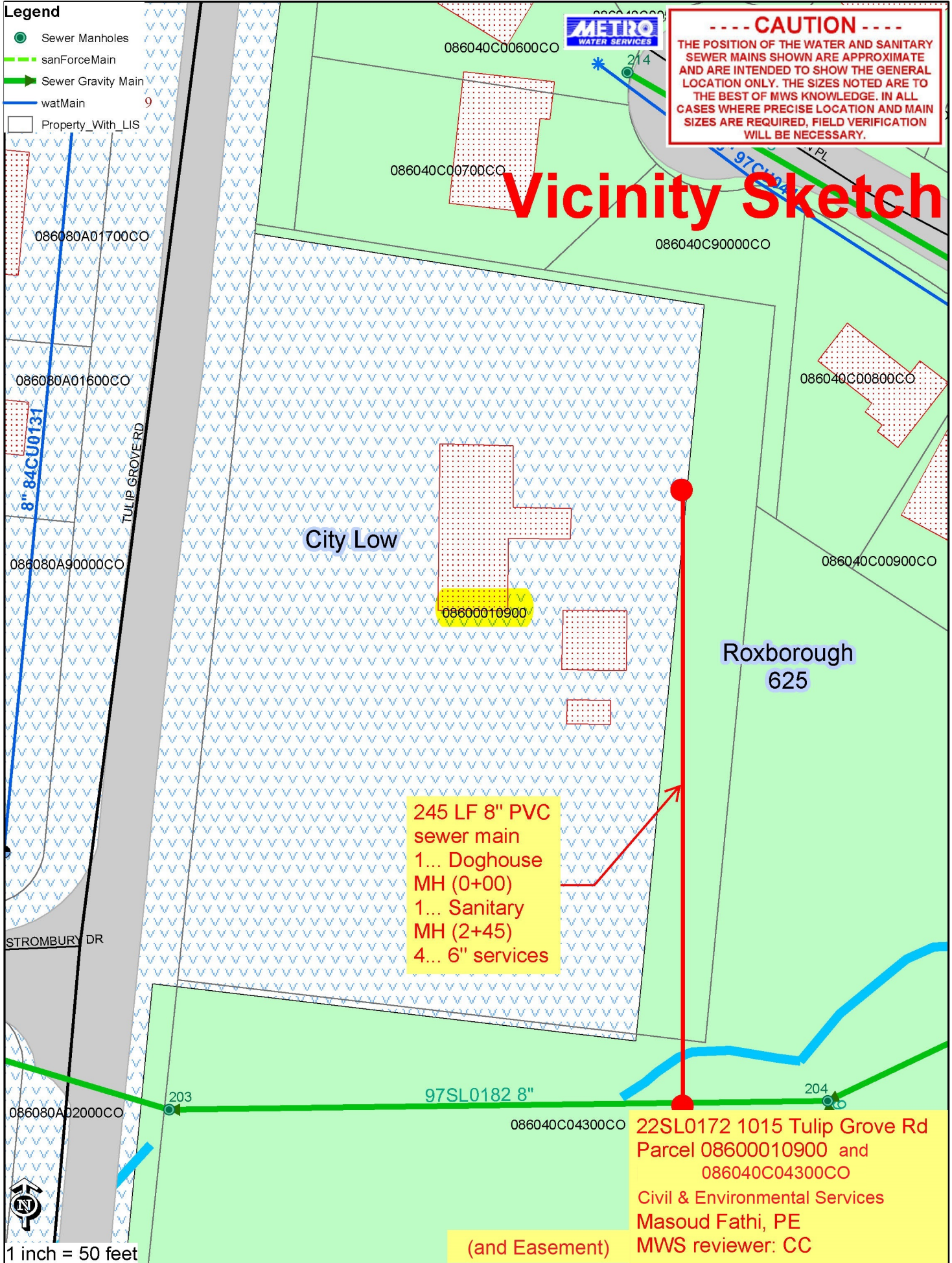
Re: 1015 TULIP GROVE ROAD
Planning Commission Mandatory Referral #2022M-177ES-001
Council District #12 Erin Evans, Council Member

A request for the acceptance of approximately 245 linear feet of eight-inch sanitary sewer main (PVC), two sanitary sewer manholes, and easements to serve the development at 1015 Tulip Grove Road. (see sketch for details).



Legend

-  Sewer Manholes
-  sanForceMain
-  Sewer Gravity Main
-  watMain
-  Property_With_LIS



----- CAUTION -----
 THE POSITION OF THE WATER AND SANITARY SEWER MAINS SHOWN ARE APPROXIMATE AND ARE INTENDED TO SHOW THE GENERAL LOCATION ONLY. THE SIZES NOTED ARE TO THE BEST OF MWS KNOWLEDGE. IN ALL CASES WHERE PRECISE LOCATION AND MAIN SIZES ARE REQUIRED, FIELD VERIFICATION WILL BE NECESSARY.

Vicinity Sketch

City Low

Roxborough
625

245 LF 8" PVC
 sewer main
 1... Doghouse
 MH (0+00)
 1... Sanitary
 MH (2+45)
 4... 6" services

22SL0172 1015 Tulip Grove Rd
 Parcel 08600010900 and
 086040C04300CO

Civil & Environmental Services
 Masoud Fathi, PE
 MWS reviewer: CC

(and Easement)

1 inch = 50 feet