



**METROPOLITAN GOVERNMENT OF NASHVILLE
AND DAVIDSON COUNTY**
Metro Office Building
800 President Ronald Reagan Way
P.O. Box 196300
Nashville, TN 37219-6300

August 30, 2023

To: Mike Atchison Metro Water Services

**Re: WILLIAMS RETREAT PHASE 2
Planning Commission Mandatory Referral 2023M-145ES-001
Council District #08 Nancy VanReece, Council Member**

On behalf of the Metropolitan Planning Commission, the following item, referred to the Commission as required by the Metro Charter, has been recommended for *approval* to the Metropolitan Council:

A request for the acceptance of approximately 293 linear feet of eight-inch sanitary sewer main (DIP), 243 linear feet of eight-inch sanitary sewer main (PVC), 3 sanitary sewer manholes, and easement to serve the Williams Retreat Phase 2 development.

The relevant Metro agencies (Metro Parks, Metro Public Works, Metro Water Services, Metro Emergency Communications, the Nashville Electric Service, Metro Finance – Public Property and the Metro Historical Commission) have reviewed the proposal and concur in the recommendation for approval. This request must be approved by the Metro Council to become effective. A sketch showing the location of the request is attached to this letter.

Conditions that apply to this approval: none

This recommendation for approval is given as set forth in the Metropolitan Planning Commission Rules and Procedures. If you have any questions about this matter, please contact Delilah Rhodes at delilah.rhodes@nashville.gov or 615-862-7208.

Sincerely,

A handwritten signature in blue ink that reads 'Lisa Milligan'.

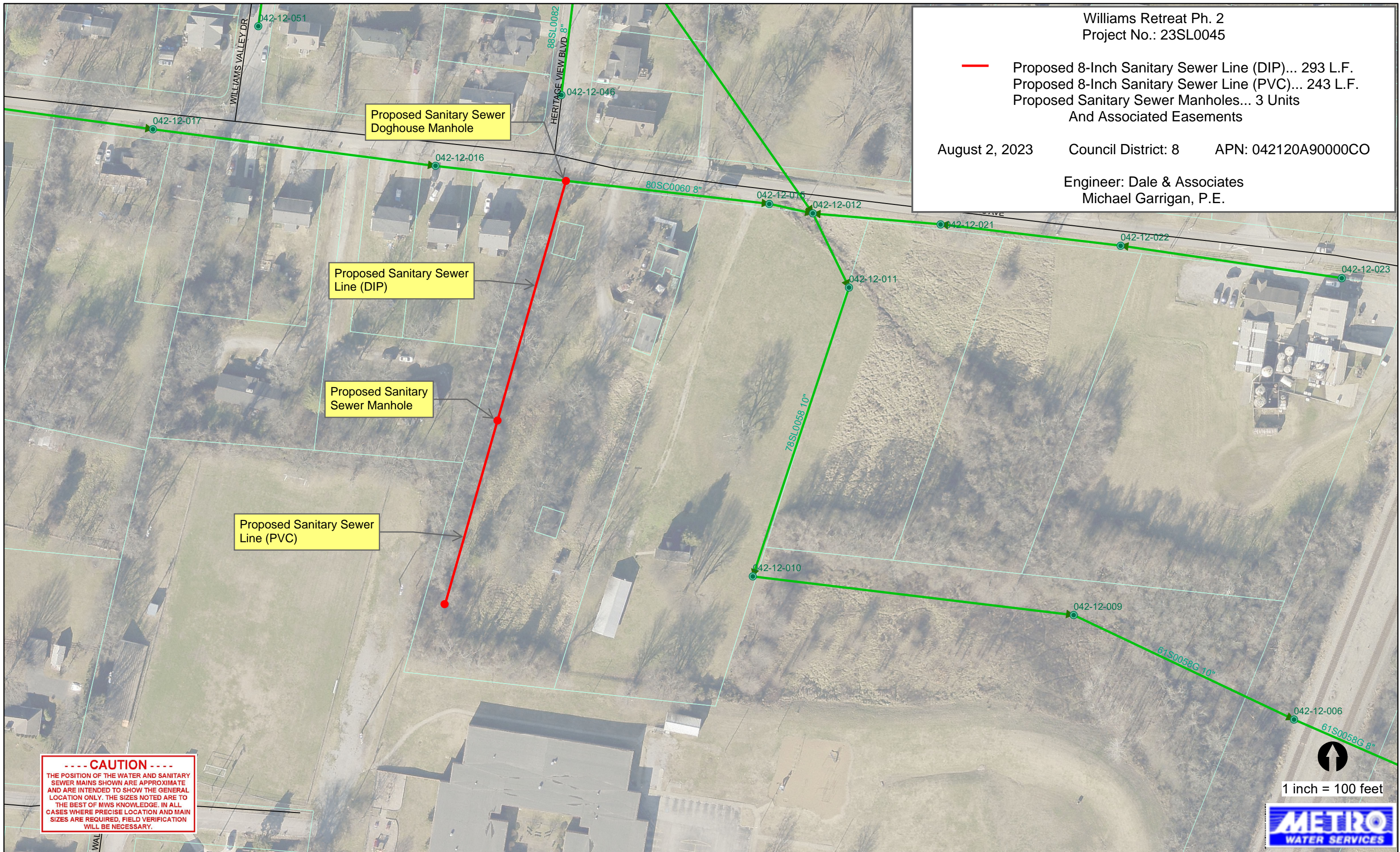
Lisa Milligan
Land Development Manager
Metro Planning Department
cc: *Metro Clerk*

Williams Retreat Ph. 2
Project No.: 23SL0045

— Proposed 8-Inch Sanitary Sewer Line (DIP)... 293 L.F.
— Proposed 8-Inch Sanitary Sewer Line (PVC)... 243 L.F.
— Proposed Sanitary Sewer Manholes... 3 Units
And Associated Easements

August 2, 2023 Council District: 8 APN: 042120A90000CO

Engineer: Dale & Associates
Michael Garrigan, P.E.



Proposed Sanitary Sewer
Doghouse Manhole

Proposed Sanitary Sewer
Line (DIP)

Proposed Sanitary
Sewer Manhole

Proposed Sanitary Sewer
Line (PVC)

----- CAUTION -----
THE POSITION OF THE WATER AND SANITARY
SEWER MAINS SHOWN ARE APPROXIMATE
AND ARE INTENDED TO SHOW THE GENERAL
LOCATION ONLY. THE SIZES NOTED ARE TO
THE BEST OF MWS KNOWLEDGE. IN ALL
CASES WHERE PRECISE LOCATION AND MAIN
SIZES ARE REQUIRED, FIELD VERIFICATION
WILL BE NECESSARY.

1 inch = 100 feet

