



**METROPOLITAN GOVERNMENT
OF NASHVILLE AND DAVIDSON COUNTY**

Planning Department
Metro Office Building
800 Second Avenue South
Nashville, Tennessee 37201

July 13, 2021

To: Mike Atchison, Metro Water Services

**Re: Mulberry Downs Phase 2
Planning Commission Mandatory Referral #2021M-058ES-001
Council District #03 – Jennifer Gamble, Council Member**

On behalf of the Metropolitan Planning Commission, the following item, referred to the Commission as required by the Metro Charter, has been recommended for *approval* to the Metropolitan Council:

A request for the abandonment of approximately 611 linear feet of 8-inch water main (DIP) and easements and the acceptance of approximately 3,732 linear feet of 8-inch water main (DIP), four fire hydrant assemblies, 2,145 linear feet of 8-inch sanitary sewer main (PVC), 506 linear feet of 8-inch sanitary sewer main (DIP), 18 sanitary sewer manholes, and any associated easements (see sketch for details) to serve the Mulberry Downs Phase 2 development (MWS proj. nos. 20-SL-214 and 20-WL-108).

The relevant Metro agencies (Metro Parks, Metro Public Works, Metro Water Services, Metro Emergency Communications, the Nashville Electric Service, Metro Finance – Public Property and the Metro Historical Commission) have reviewed the proposal and concur in the recommendation for approval. This request must be approved by the Metro Council to become effective. A sketch showing the location of the request is attached to this letter.

Conditions that apply to this approval: None.

This recommendation for approval is given as set forth in the Metropolitan Planning Commission Rules and Procedures. If you have any questions about this matter, please contact Sharon O’Conner at Sharon.oconner@nashville.gov or 615-862-7208.

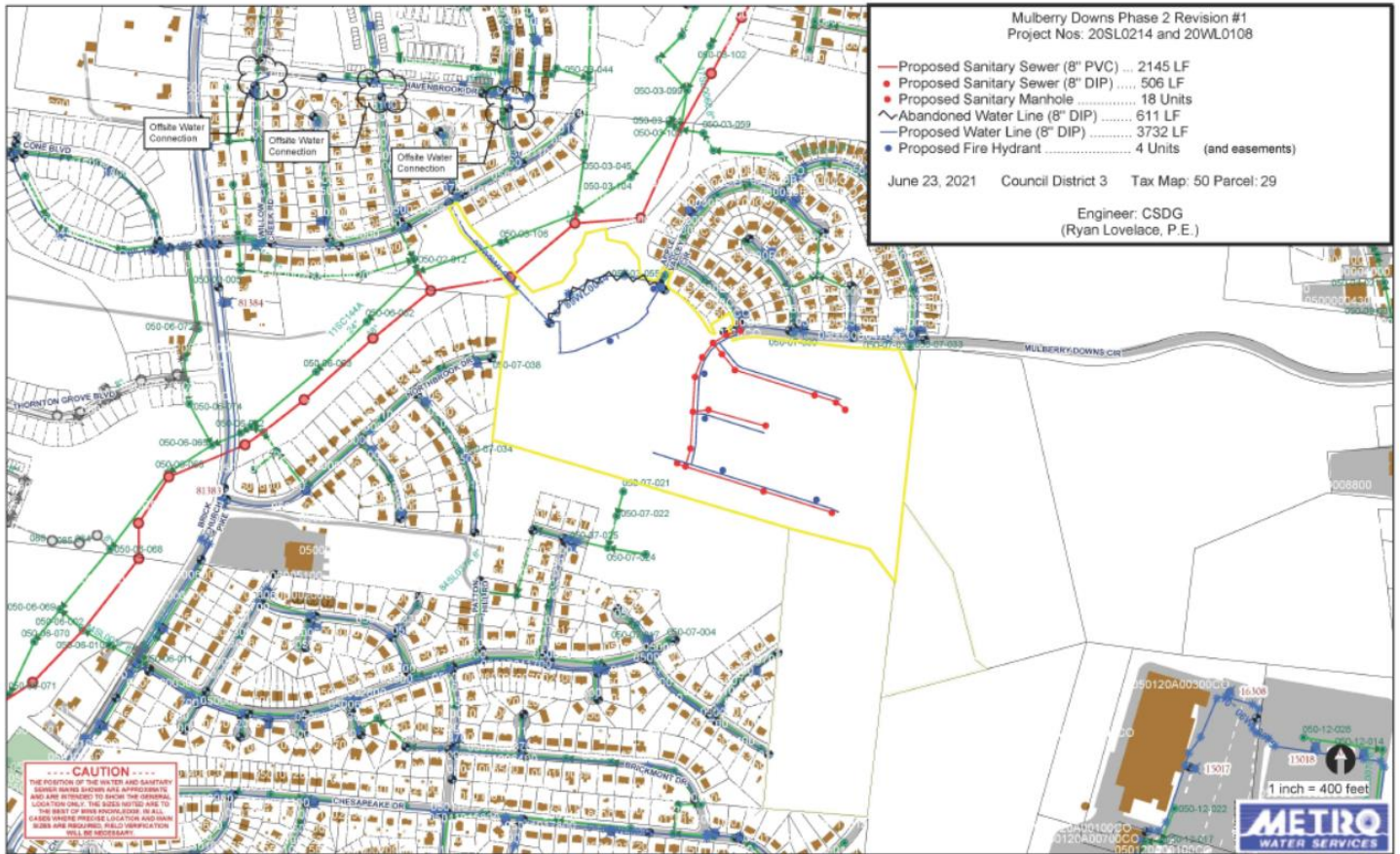
Sincerely,

A handwritten signature in black ink that reads 'Robert Leeman'.

Robert Leeman, AICP
Deputy Director
Metro Planning Department
cc: Metro Clerk, Elizabeth Waites

Re: Mulberry Downs Phase 2
Planning Commission Mandatory Referral #2021M-058ES-001
Council District #03 – Jennifer Gamble, Council Member

A request for the abandonment of approximately 611 linear feet of 8-inch water main (DIP) and easements and the acceptance of approximately 3,732 linear feet of 8-inch water main (DIP), four fire hydrant assemblies, 2,145 linear feet of 8-inch sanitary sewer main (PVC), 506 linear feet of 8-inch sanitary sewer main (DIP), 18 sanitary sewer manholes, and any associated easements (see sketch for details) to serve the Mulberry Downs Phase 2 development (MWS proj. nos. 20-SL-214 and 20-WL-108).

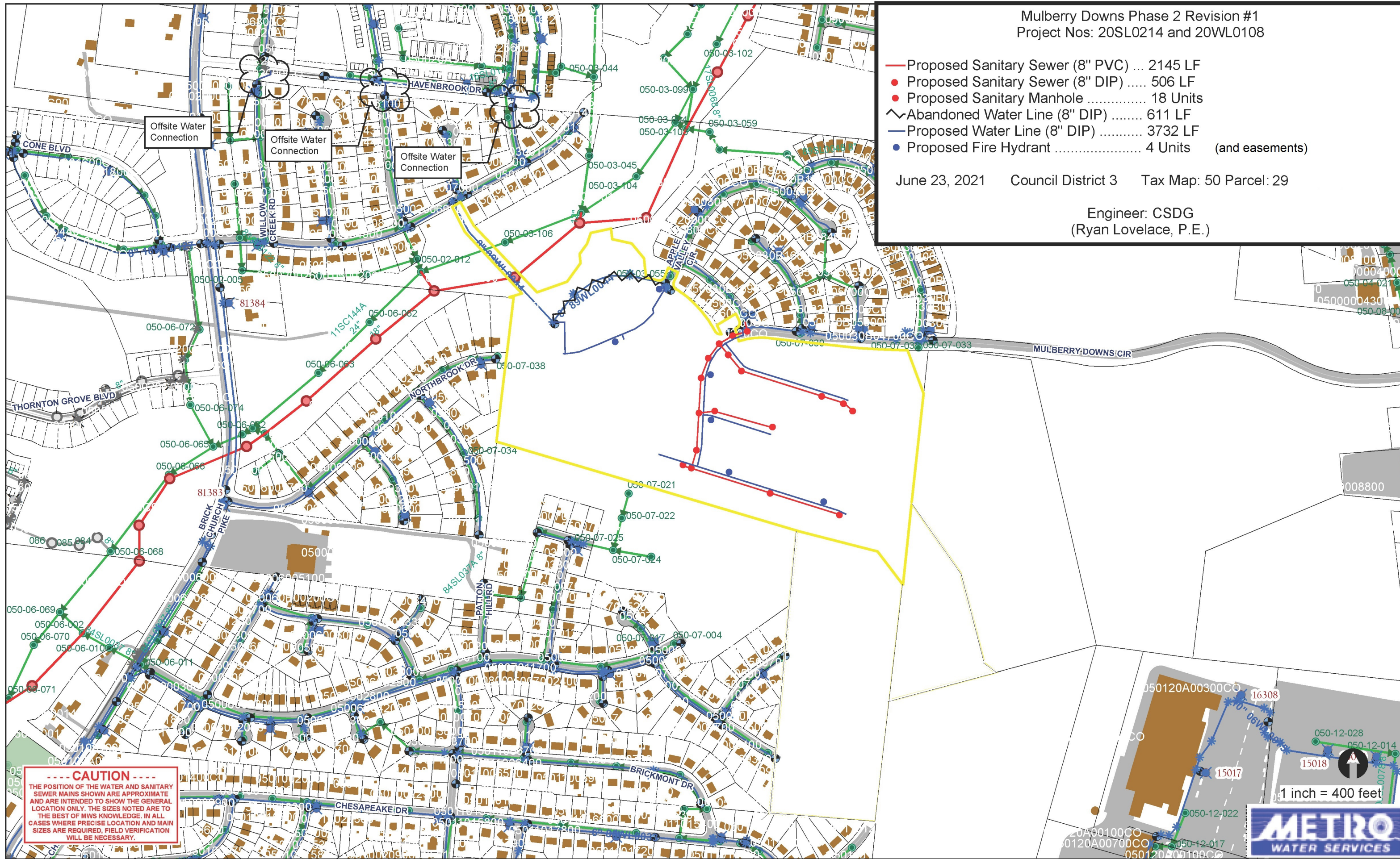


Mulberry Downs Phase 2 Revision #1
Project Nos: 20SL0214 and 20WL0108

- Proposed Sanitary Sewer (8" PVC) ... 2145 LF
- Proposed Sanitary Sewer (8" DIP) 506 LF
- Proposed Sanitary Manhole 18 Units
- ~ Abandoned Water Line (8" DIP) 611 LF
- Proposed Water Line (8" DIP) 3732 LF
- Proposed Fire Hydrant 4 Units (and easements)

June 23, 2021 Council District 3 Tax Map: 50 Parcel: 29

Engineer: CSDG
(Ryan Lovelace, P.E.)



----- CAUTION -----
 THE POSITION OF THE WATER AND SANITARY SEWER MAINS SHOWN ARE APPROXIMATE AND ARE INTENDED TO SHOW THE GENERAL LOCATION ONLY. THE SIZES NOTED ARE TO THE BEST OF MWS KNOWLEDGE. IN ALL CASES WHERE PRECISE LOCATION AND MAIN SIZES ARE REQUIRED, FIELD VERIFICATION WILL BE NECESSARY.

