



**METROPOLITAN GOVERNMENT OF NASHVILLE
AND DAVIDSON COUNTY**

Metro Office Building
800 President Ronald Reagan Way
P.O. Box 196300
Nashville, TN 37219-6300

November 2, 2022

To: Edward Thurman, Metro Water Services

**Re: WILLOWBROOK SUBDIVISION
Planning Commission Mandatory Referral #2022M-153ES-001**

On behalf of the Metropolitan Planning Commission, the following item, referred to the Commission as required by the Metro Charter, has been recommended for *approval* to the Metropolitan Council:

A request for the acceptance of approximately 4,478 linear feet of eight-inch sanitary sewer mains (PVC), 20 sanitary sewer manholes, and easements to serve the Willowbrook development in Williamson County.

The relevant Metro agencies (Metro Parks, Metro Public Works, Metro Water Services, Metro Emergency Communications, the Nashville Electric Service, Metro Finance – Public Property and the Metro Historical Commission) have reviewed the proposal and concur in the recommendation for approval. This request must be approved by the Metro Council to become effective. A sketch showing the location of the request is attached to this letter.

Conditions that apply to this approval: none

This recommendation for approval is given as set forth in the Metropolitan Planning Commission Rules and Procedures. If you have any questions about this matter, please contact Delilah Rhodes at delilah.rhodes@nashville.gov or 615-862-7208.

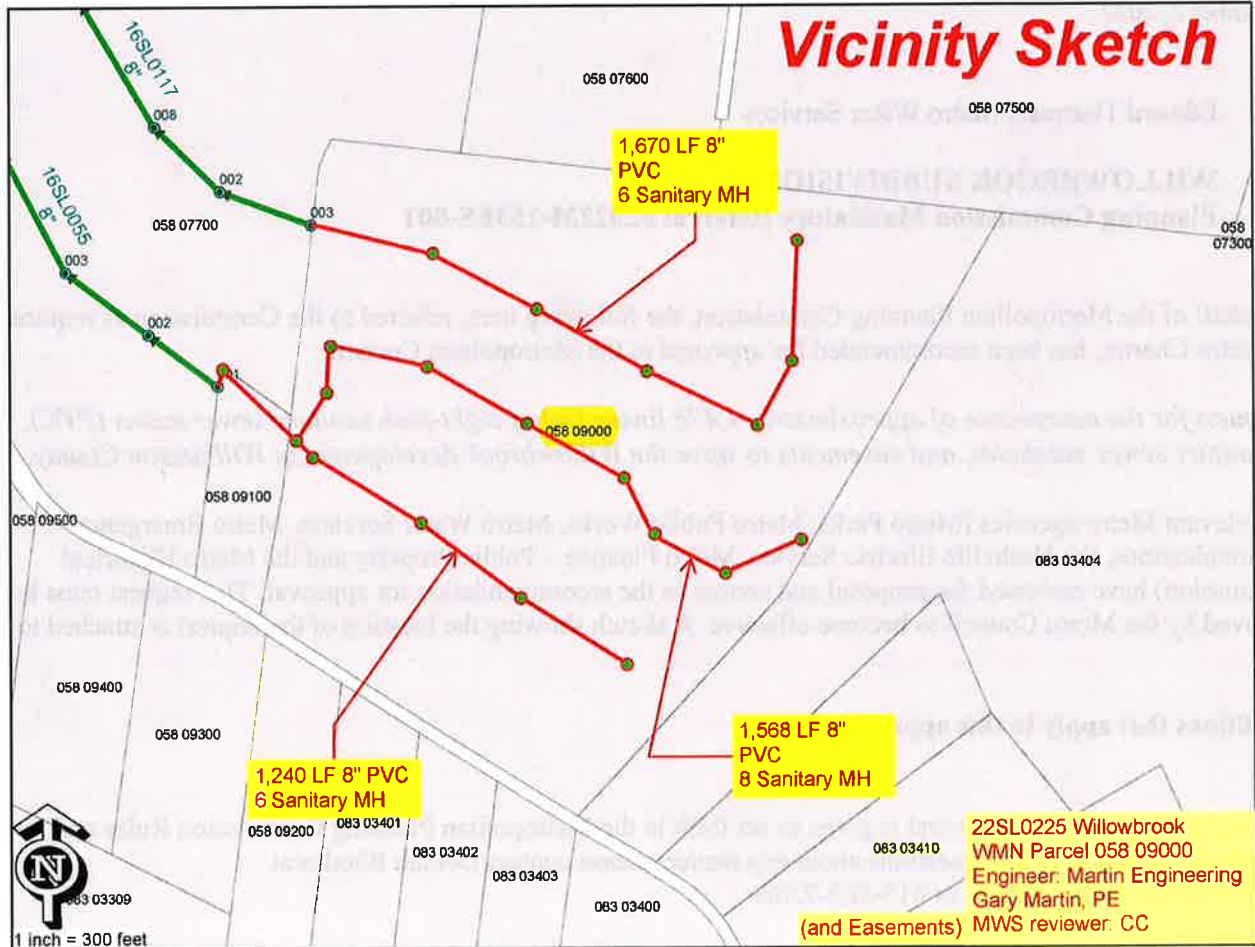
Sincerely,

A handwritten signature in blue ink that reads "Lisa Milligan".

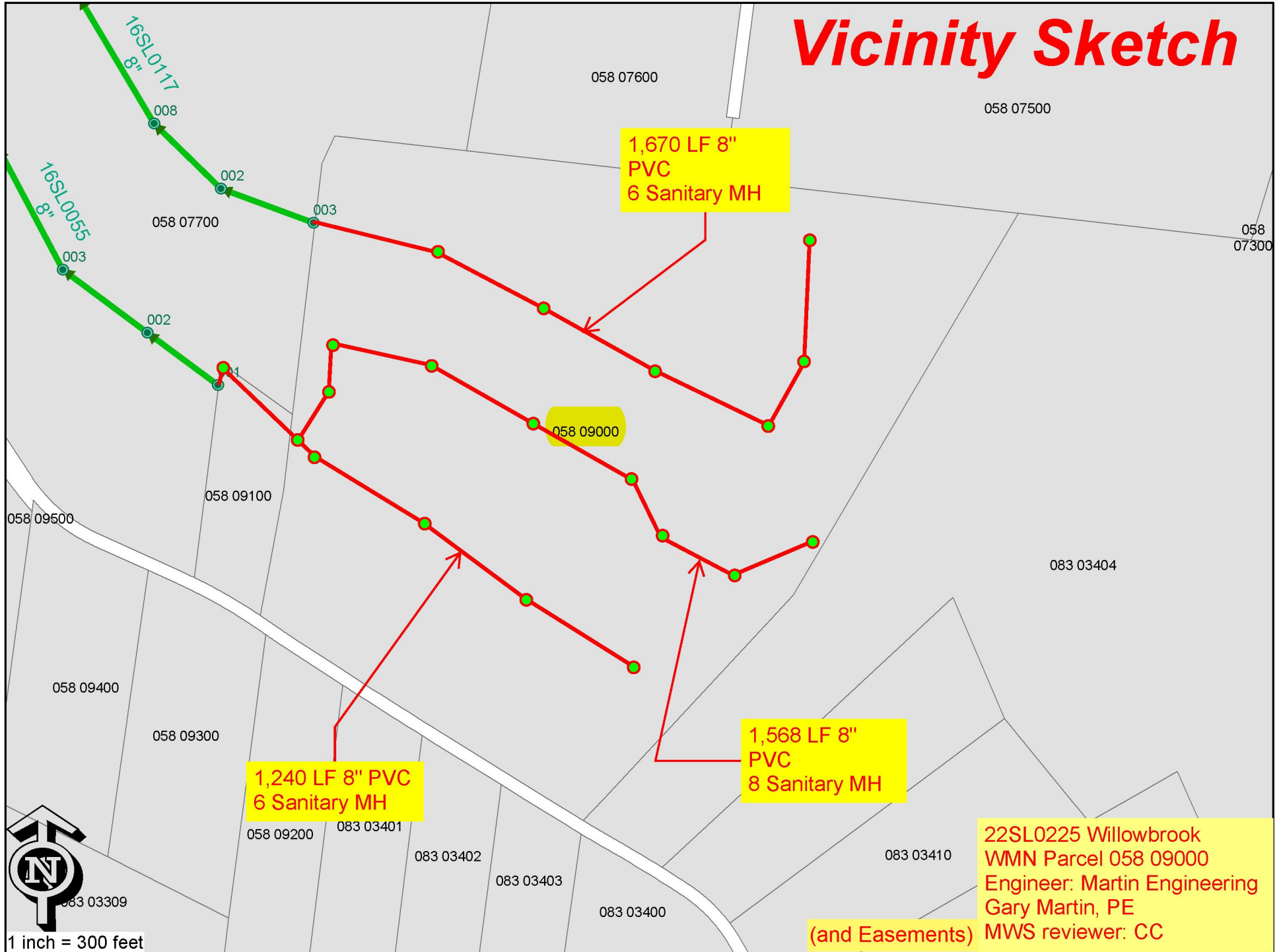
Lisa Milligan
Land Development Manager
Metro Planning Department
cc: *Metro Clerk*

Re: WILLOWBROOK SUBDIVISION
Planning Commission Mandatory Referral #2022M-153ES-001

A request for the acceptance of approximately 4,478 linear feet of eight-inch sanitary sewer mains (PVC), 20 sanitary sewer manholes, and easements to serve the Willowbrook development in Williamson County.



Vicinity Sketch



1,670 LF 8"
PVC
6 Sanitary MH

058 09000

1,240 LF 8" PVC
6 Sanitary MH

1,568 LF 8"
PVC
8 Sanitary MH

22SL0225 Willowbrook
WMN Parcel 058 09000
Engineer: Martin Engineering
Gary Martin, PE
MWS reviewer: CC
(and Easements)



1 inch = 300 feet