

CAUTION
 THE POSITION OF THE WATER AND SANITARY SEWER MAINS SHOWN ARE APPROXIMATE AND ARE INTENDED TO SHOW THE GENERAL LOCATION ONLY. THE SIZES NOTED ARE TO THE BEST OF MWS KNOWLEDGE. IN ALL CASES WHERE PRECISE LOCATION AND MAIN SIZES ARE REQUIRED, FIELD VERIFICATION WILL BE NECESSARY.

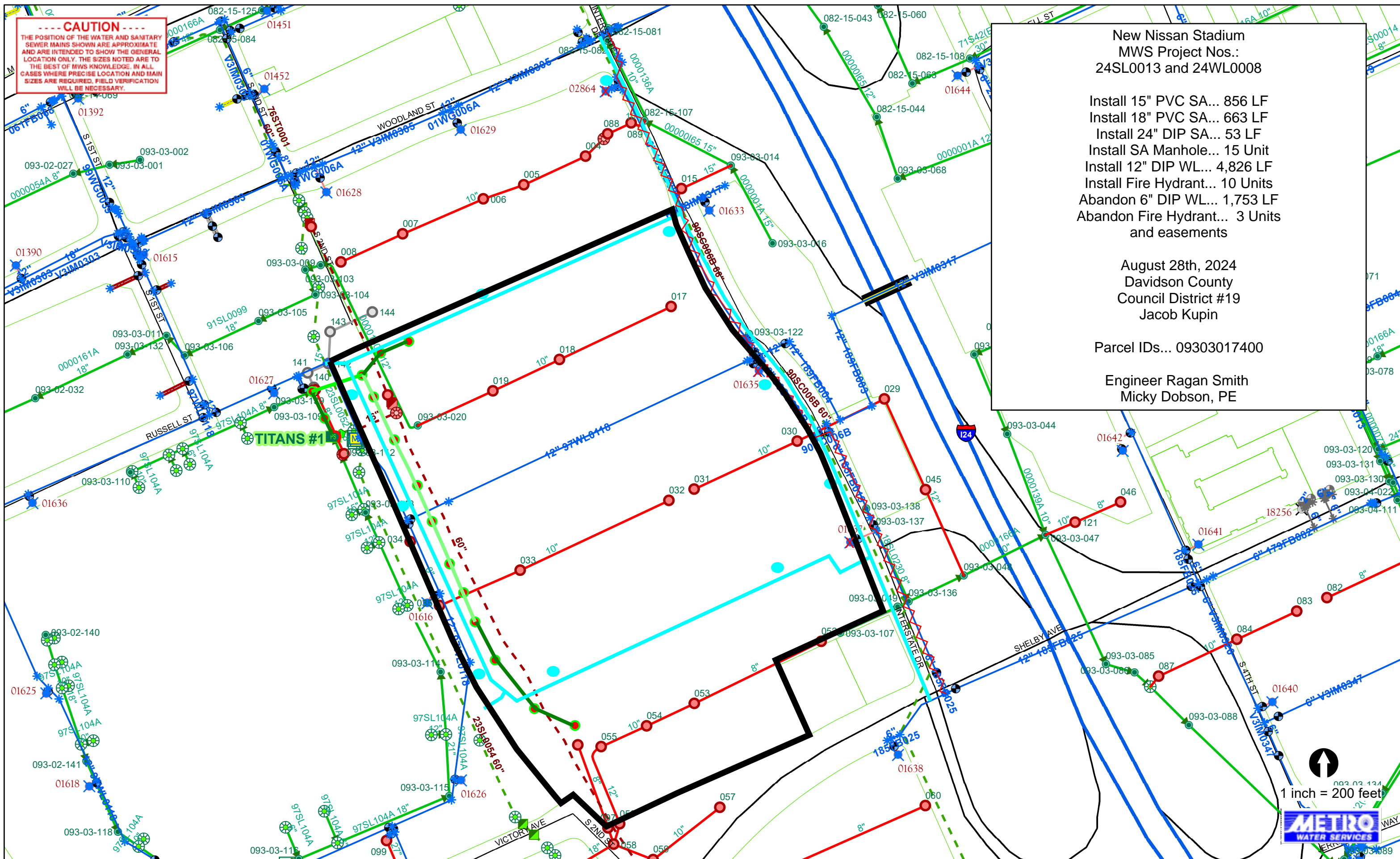
**New Nissan Stadium
 MWS Project Nos.:
 24SL0013 and 24WL0008**

Install 15" PVC SA... 856 LF
 Install 18" PVC SA... 663 LF
 Install 24" DIP SA... 53 LF
 Install SA Manhole... 15 Unit
 Install 12" DIP WL... 4,826 LF
 Install Fire Hydrant... 10 Units
 Abandon 6" DIP WL... 1,753 LF
 Abandon Fire Hydrant... 3 Units
 and easements

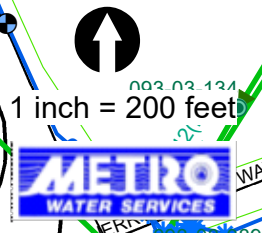
August 28th, 2024
 Davidson County
 Council District #19
 Jacob Kupin

Parcel IDs... 09303017400

Engineer Ragan Smith
 Micky Dobson, PE



TITANS #1





September 20, 2024

To: Stephanie James Metro Water Services

**Re: New Nissan Stadium
Planning Commission Mandatory Referral 2024M-114ES-001
Council District #19 Jacob Kupin, Council Member**

On behalf of the Metropolitan Planning Commission, the following item, referred to the Commission as required by the Metro Charter, has been recommended for *approval* to the Metropolitan Council:

A request for the abandonment of approximately of 1,753 linear feet of six-inch water main (DIP) and three fire hydrant assemblies and the acceptance of approximately 856 linear feet of 15-inch sanitary sewer main (PVC), approximately 663 linear feet of 18-inch sanitary sewer main (PVC), approximately 53 linear feet of 24-inch sanitary sewer main (DIP), 15 sanitary sewer manholes, and approximately 4,826 linear feet of 12-inch water main (DIP), 10 fire hydrant assemblies and associated easements to serve the New Nissan Stadium development.

The relevant Metro agencies (Metro Parks, Nashville Department of Transportation, Metro Water Services, Metro Emergency Communications, the Nashville Electric Service, Metro Finance – Public Property and the Metro Historical Commission) have reviewed the proposal and concur in the recommendation for approval. This request must be approved by the Metro Council to become effective. A sketch showing the location of the request is attached to this letter.

Conditions that apply to this approval: none

This recommendation for approval is given as set forth in the Metropolitan Planning Commission Rules and Procedures. If you have any questions about this matter, please contact Delilah Rhodes at Delilah.Rhodes@nashville.gov or 615-862-7208

Sincerely,

A handwritten signature in blue ink that reads "Lisa Milligan".

Lisa Milligan
Assistant Director Land Development
Metro Planning Department
cc: Metro Clerk

**Re: New Nissan Stadium
Planning Commission Mandatory Referral 2024M-114ES-001
Council District #19 Jacob Kupin, Council Member**

A request for the abandonment of approximately of 1,753 linear feet of six-inch water main (DIP) and three fire hydrant assemblies and the acceptance of approximately 856 linear feet of 15-inch sanitary sewer main (PVC), approximately 663 linear feet of 18-inch sanitary sewer main (PVC), approximately 53 linear feet of 24-inch sanitary sewer main (DIP), 15 sanitary sewer manholes, and approximately 4,826 linear feet of 12-inch water main (DIP), 10 fire hydrant assemblies and associated easements to serve the New Nissan Stadium development.

