

**23-SL-13 Ewing Drive Sanitary Sewer
Parcel List**

<u>Map/Parcels</u>	<u>Address</u>	<u>Property Owner</u>
06004003700	3105 Dickerson Pike	Hill Revolver, LLC
06008007300	3101 Dickerson Pike	Hill Revolver, LLC
06008001800	3053 Dickerson Pike	McKnight Family Partners LLC
06008001900	3049 Dickerson Pike	Jay Amba Ma, LLC
06008000400	3100 Dickerson Pike	Dickerson Properties LLC
06008000300	105 Ewing Drive	Baek, Miyeon
06008000201	109 Ewing Drive	Walker, Winston & Joan M
06100001700	301 Ben Allen Road	301 Ben Allen, LLC



**METROPOLITAN GOVERNMENT OF NASHVILLE
AND DAVIDSON COUNTY**

Metro Office Building
800 President Ronald Reagan Way
P.O. Box 196300
Nashville, TN 37219-6300

April 28, 2023

To: Stephanie James Metro Water Services

**Re: EWING DRIVE SANITARY SEWER REPLACEMENT
Planning Commission Mandatory Referral # 2023M-055ES-001
Council District #02 Kyonzte Toombs, Council Member
Council District #08 Nancy VanReece, Council Member**

On behalf of the Metropolitan Planning Commission, the following item, referred to the Commission as required by the Metro Charter, has been recommended for *approval* to the Metropolitan Council:

A request for the abandonment of approximately 663 linear feet of eight-inch sanitary sewer main (PVC), 19 linear feet of 15-inch sanitary sewer main (PVC), and five sanitary sewer manholes, and the acceptance of approximately 663 linear feet of 12-inch sanitary sewer main (DIP), 19 linear feet of 15-inch sanitary sewer main (DIP), and four sanitary sewer manholes to serve the Ewing Drive Sanitary Sewer Replacement project.

The relevant Metro agencies (Metro Parks, Metro Public Works, Metro Water Services, Metro Emergency Communications, the Nashville Electric Service, Metro Finance – Public Property and the Metro Historical Commission) have reviewed the proposal and concur in the recommendation for approval. This request must be approved by the Metro Council to become effective. A sketch showing the location of the request is attached to this letter.

Conditions that apply to this approval: none

This recommendation for approval is given as set forth in the Metropolitan Planning Commission Rules and Procedures. If you have any questions about this matter, please contact Delilah Rhodes at delilah.rhodes@nashville.gov or 615-862-7208.

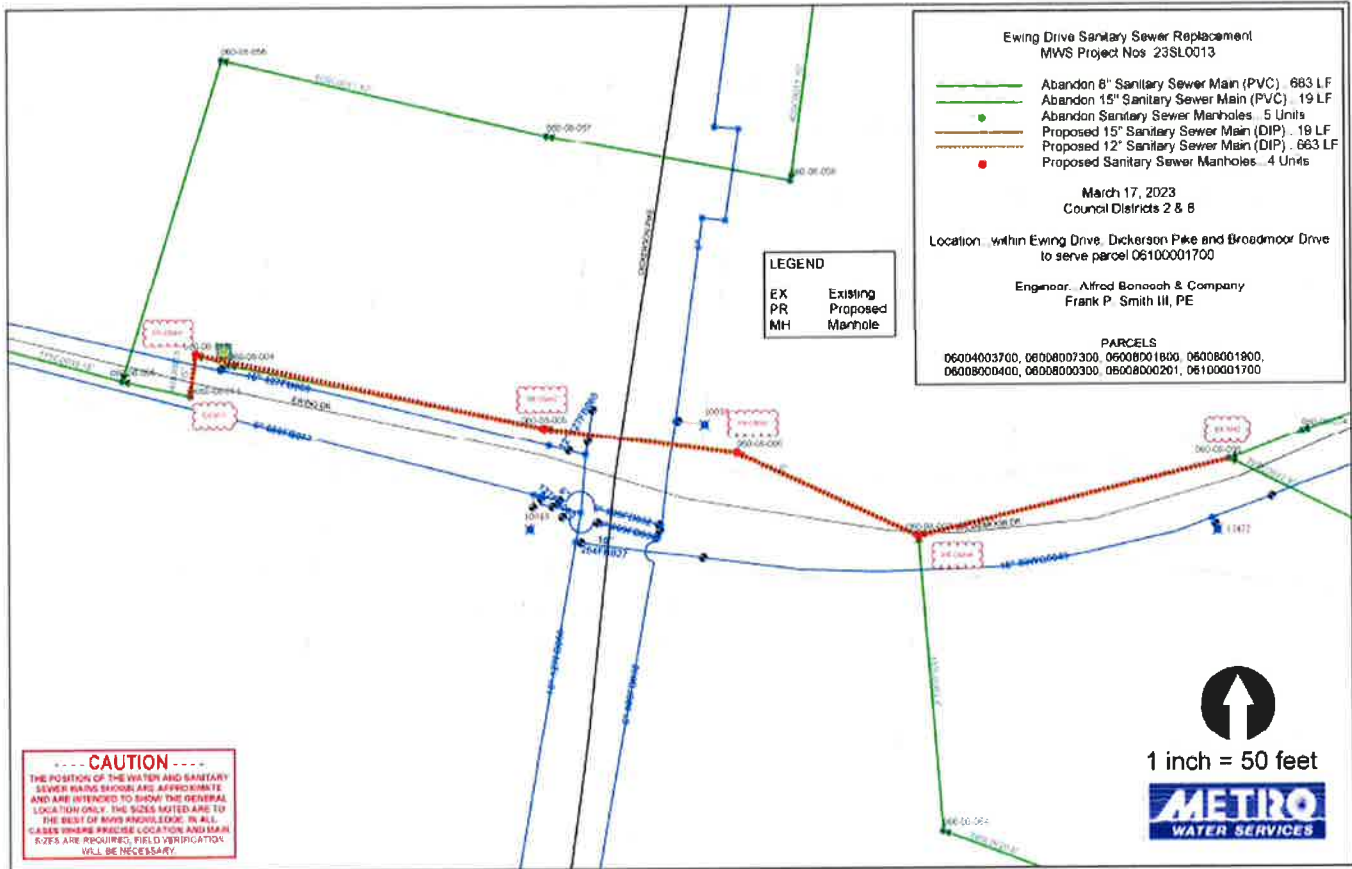
Sincerely,

A handwritten signature in blue ink that reads "Lisa Milligan".

Lisa Milligan
Land Development Manager
Metro Planning Department
cc: *Metro Clerk*

Re: EWING DRIVE SANITARY SEWER REPLACEMENT
Planning Commission Mandatory Referral # 2023M-055ES-001
Council District #02 Kyonzte Toombs, Council Member
Council District #08 Nancy VanReece, Council Member

A request for the abandonment of approximately 663 linear feet of eight-inch sanitary sewer main (PVC), 19 linear feet of 15-inch sanitary sewer main (PVC), and five sanitary sewer manholes, and the acceptance of approximately 663 linear feet of 12-inch sanitary sewer main (DIP), 19 linear feet of 15-inch sanitary sewer main (DIP), and four sanitary sewer manholes to serve the Ewing Drive Sanitary Sewer Replacement project.



Ewing Drive Sanitary Sewer Replacement MWS Project Nos: 23SL0013

-  Abandon 8" Sanitary Sewer Main (PVC)...663 LF
-  Abandon 15" Sanitary Sewer Main (PVC)...19 LF
-  Abandon Sanitary Sewer Manholes...5 Units
-  Proposed 15" Sanitary Sewer Main (DIP)...19 LF
-  Proposed 12" Sanitary Sewer Main (DIP)...663 LF
-  Proposed Sanitary Sewer Manholes...4 Units

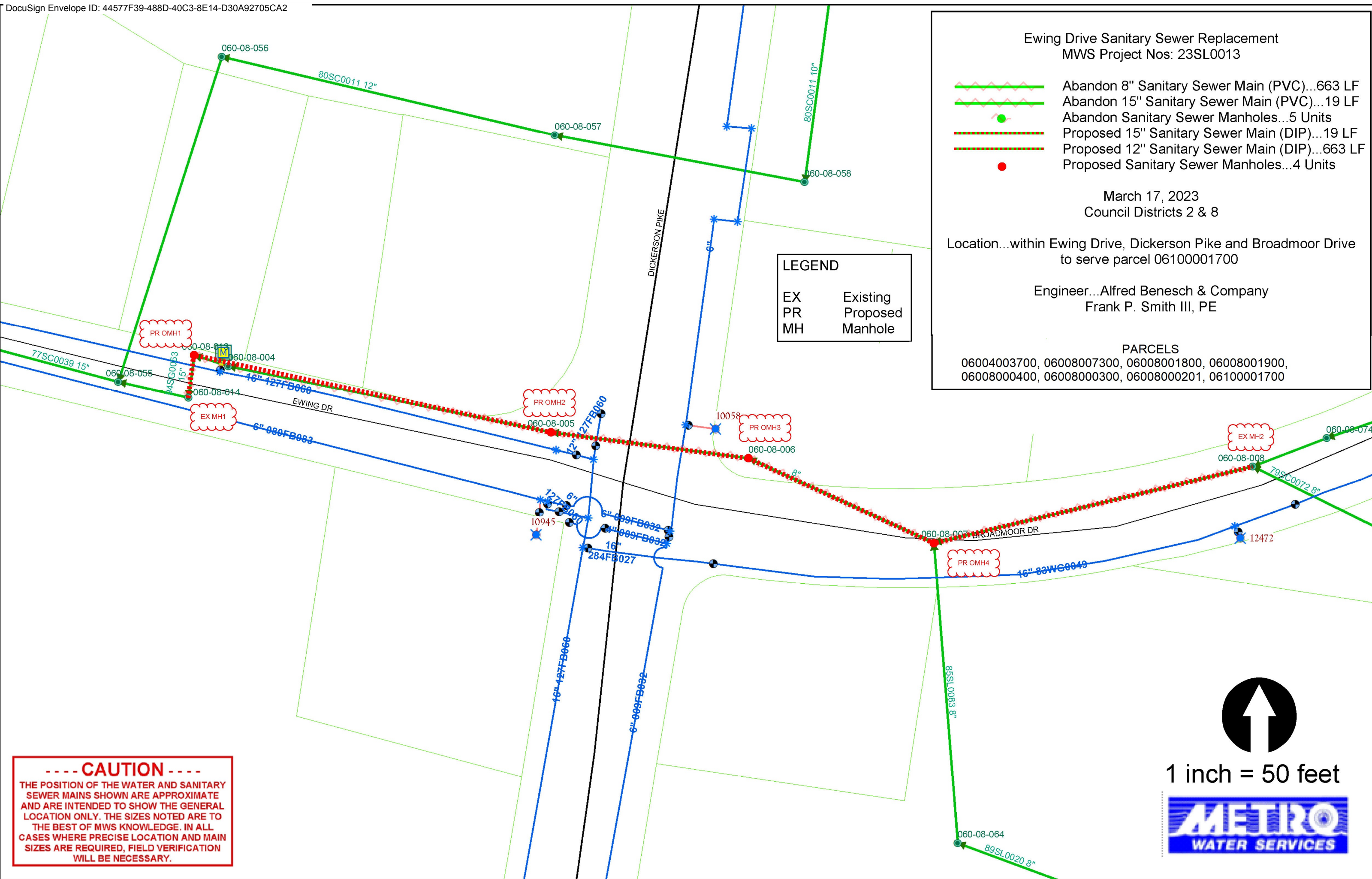
March 17, 2023
Council Districts 2 & 8

Location...within Ewing Drive, Dickerson Pike and Broadmoor Drive
to serve parcel 06100001700

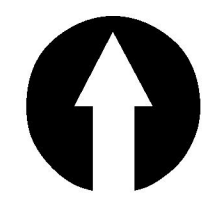
Engineer...Alfred Benesch & Company
Frank P. Smith III, PE

PARCELS
06004003700, 06008007300, 06008001800, 06008001900,
06008000400, 06008000300, 06008000201, 06100001700

LEGEND	
EX	Existing
PR	Proposed
MH	Manhole



----- CAUTION -----
 THE POSITION OF THE WATER AND SANITARY SEWER MAINS SHOWN ARE APPROXIMATE AND ARE INTENDED TO SHOW THE GENERAL LOCATION ONLY. THE SIZES NOTED ARE TO THE BEST OF MWS KNOWLEDGE. IN ALL CASES WHERE PRECISE LOCATION AND MAIN SIZES ARE REQUIRED, FIELD VERIFICATION WILL BE NECESSARY.



1 inch = 50 feet

