

**Paseo South Gulch Development  
21-WL-69, 21-SL-153 and SWGR 2021057006  
Parcel List**

<b><u>Address</u></b>	<b><u>Map/Parcels</u></b>	<b><u>Property Owners</u></b>
618 8 <sup>th</sup> Avenue South	09314022300	MTP Dev- 620 8 <sup>th</sup> Ave. South, LLC
620 8 <sup>th</sup> Avenue South	09314022400	MTP Dev- 620 8 <sup>th</sup> Ave. South, LLC
708 Fogg Street	09314022500	MTP Dev- 620 8 <sup>th</sup> Ave. South, LLC
701 7 <sup>th</sup> Avenue South	09314023000	MTP Dev- 620 8 <sup>th</sup> Ave. South, LLC
8 <sup>th</sup> Avenue South (unnumbered)	09314060700	MTP Dev- 620 8 <sup>th</sup> Ave. South, LLC



**METROPOLITAN GOVERNMENT  
OF NASHVILLE AND DAVIDSON COUNTY**

Planning Department  
Metro Office Building  
800 Second Avenue South  
Nashville, Tennessee 37201

November 1, 2021

To: Mike Atchison, Metro Water Services

**Re: Paseo South Gulch  
Planning Commission Mandatory Referral #2021M-085ES-001  
Council District #19 – Freddie O'Connell, Council Member**

On behalf of the Metropolitan Planning Commission, the following item, referred to the Commission as required by the Metro Charter, has been recommended for *approval* to the Metropolitan Council:

*A request for the abandonment of approximately 82 linear feet of 8-inch sanitary sewer main, one sanitary sewer manhole, 375 linear feet of 6-inch water main, 72 linear feet of 12-inch storm sewer (RCP), 23 linear feet of 15-inch storm sewer (RCP), 140 linear feet of 18-inch storm sewer (RCP), nine storm sewer catch basins, and easements, and the acceptance of approximately 23 linear feet of 6-inch water main (DIP), relocation of one fire hydrant assembly, one water quality unit, 93 linear feet of 15-inch storm sewer (RCP), 179 linear feet of 18-inch storm sewer (RCP), 119 linear feet of 24-inch storm sewer (RCP), 15 linear feet of 36-inch storm sewer (RCP), eight storm sewer catch basins, and easements (see sketch for details) to serve the Paseo South Gulch development (MWS Project Nos: 21-SL-153, 21-WL-69, and SWGR 2021057006).*

The relevant Metro agencies (Metro Parks, Metro Public Works, Metro Water Services, Metro Emergency Communications, the Nashville Electric Service, Metro Finance – Public Property and the Metro Historical Commission) have reviewed the proposal and concur in the recommendation for approval. This request must be approved by the Metro Council to become effective. A sketch showing the location of the request is attached to this letter.

**Conditions that apply to this approval: None.**

This recommendation for approval is given as set forth in the Metropolitan Planning Commission Rules and Procedures. If you have any questions about this matter, please contact Sharon O'Conner at [Sharon.oconner@nashville.gov](mailto:Sharon.oconner@nashville.gov) or 615-862-7208.

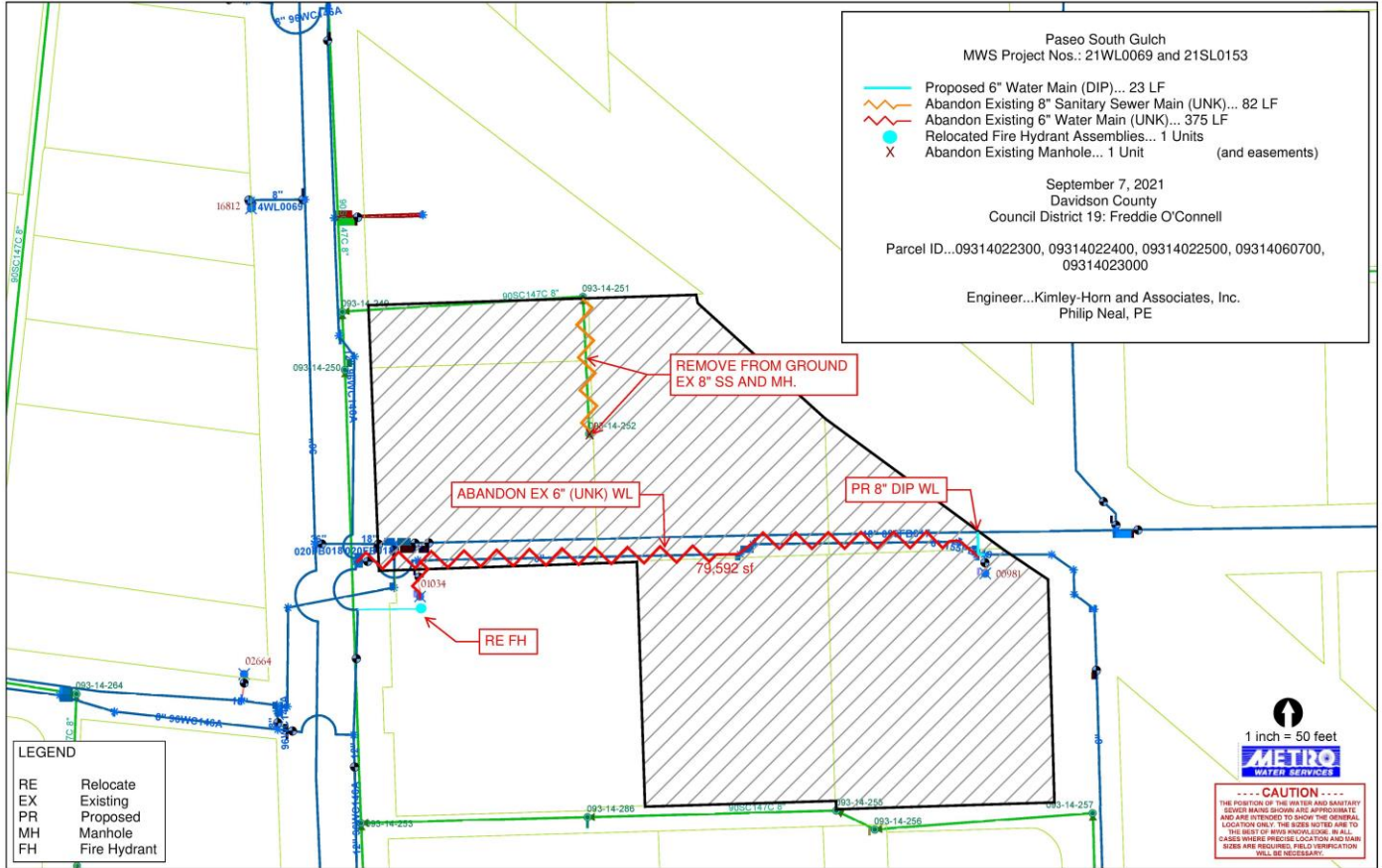
Sincerely,

A handwritten signature in black ink that reads 'Robert Leeman'.

Robert Leeman  
Deputy Director  
Metro Planning Department  
cc: Metro Clerk, Elizabeth Waites

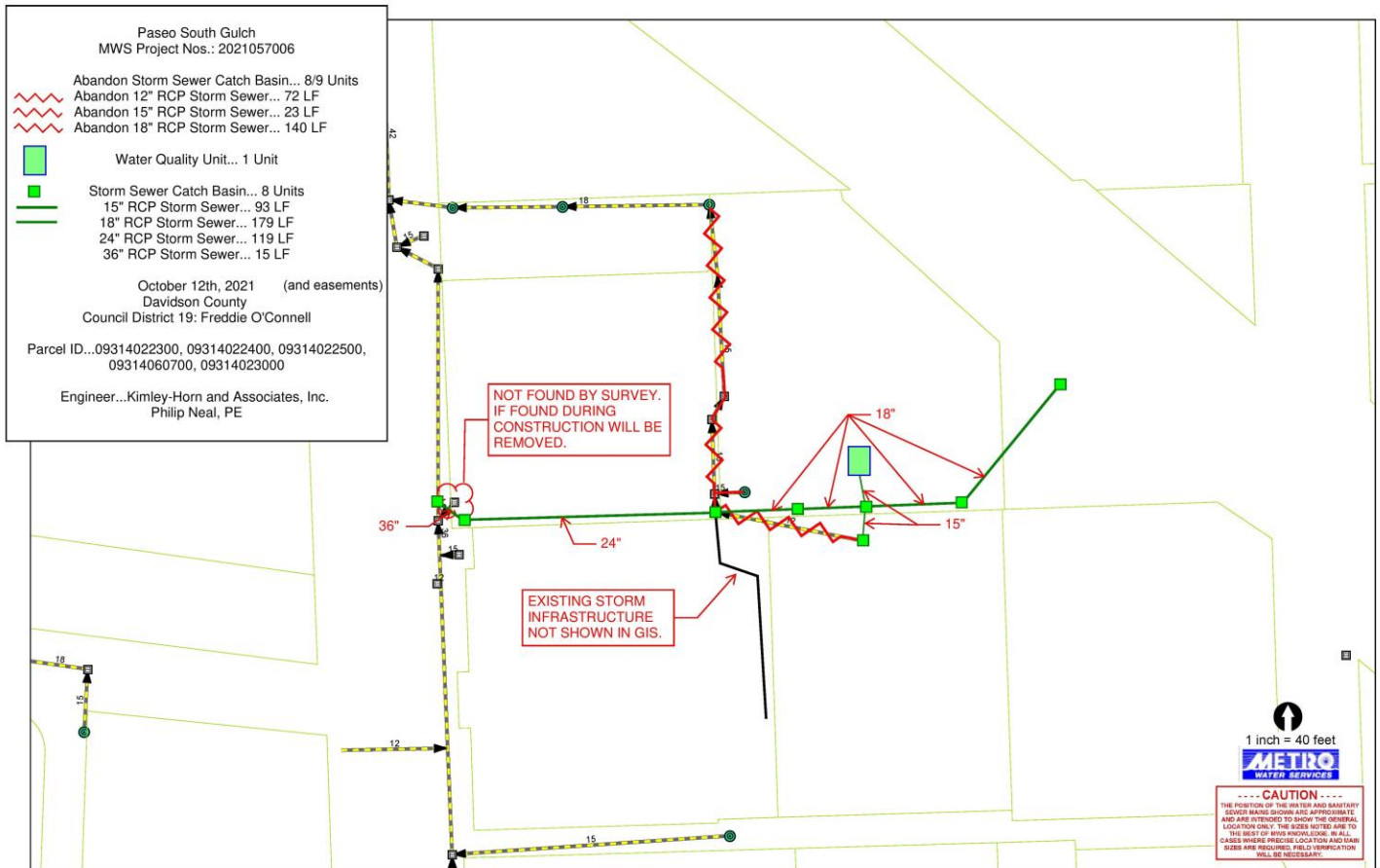
**Re: Paseo South Gulch**  
**Planning Commission Mandatory Referral #2021M-085ES-001**  
 Council District #19 – Freddie O'Connell, Council Member

A request for the abandonment of approximately 82 linear feet of 8-inch sanitary sewer main, one sanitary sewer manhole, 375 linear feet of 6-inch water main, 72 linear feet of 12-inch storm sewer (RCP), 23 linear feet of 15-inch storm sewer (RCP), 140 linear feet of 18-inch storm sewer (RCP), nine storm sewer catch basins, and easements, and the acceptance of approximately 23 linear feet of 6-inch water main (DIP), relocation of one fire hydrant assembly, one water quality unit, 93 linear feet of 15-inch storm sewer (RCP), 179 linear feet of 18-inch storm sewer (RCP), 119 linear feet of 24-inch storm sewer (RCP), 15 linear feet of 36-inch storm sewer (RCP), eight storm sewer catch basins, and easements (see sketch for details) to serve the Paseo South Gulch development (MWS Project Nos: 21-SL-153, 21-WL-69, and SWGR 2021057006).








**Re: Paseo South Gulch**  
**Planning Commission Mandatory Referral #2021M-085ES-001**  
Council District #19 – Freddie O'Connell, Council Member

A request for the abandonment of approximately 82 linear feet of 8-inch sanitary sewer main, one sanitary sewer manhole, 375 linear feet of 6-inch water main, 72 linear feet of 12-inch storm sewer (RCP), 23 linear feet of 15-inch storm sewer (RCP), 140 linear feet of 18-inch storm sewer (RCP), nine storm sewer catch basins, and easements, and the acceptance of approximately 23 linear feet of 6-inch water main (DIP), relocation of one fire hydrant assembly, one water quality unit, 93 linear feet of 15-inch storm sewer (RCP), 179 linear feet of 18-inch storm sewer (RCP), 119 linear feet of 24-inch storm sewer (RCP), 15 linear feet of 36-inch storm sewer (RCP), eight storm sewer catch basins, and easements (see sketch for details) to serve the Paseo South Gulch development (MWS Project Nos: 21-SL-153, 21-WL-69, and SWGR 2021057006).





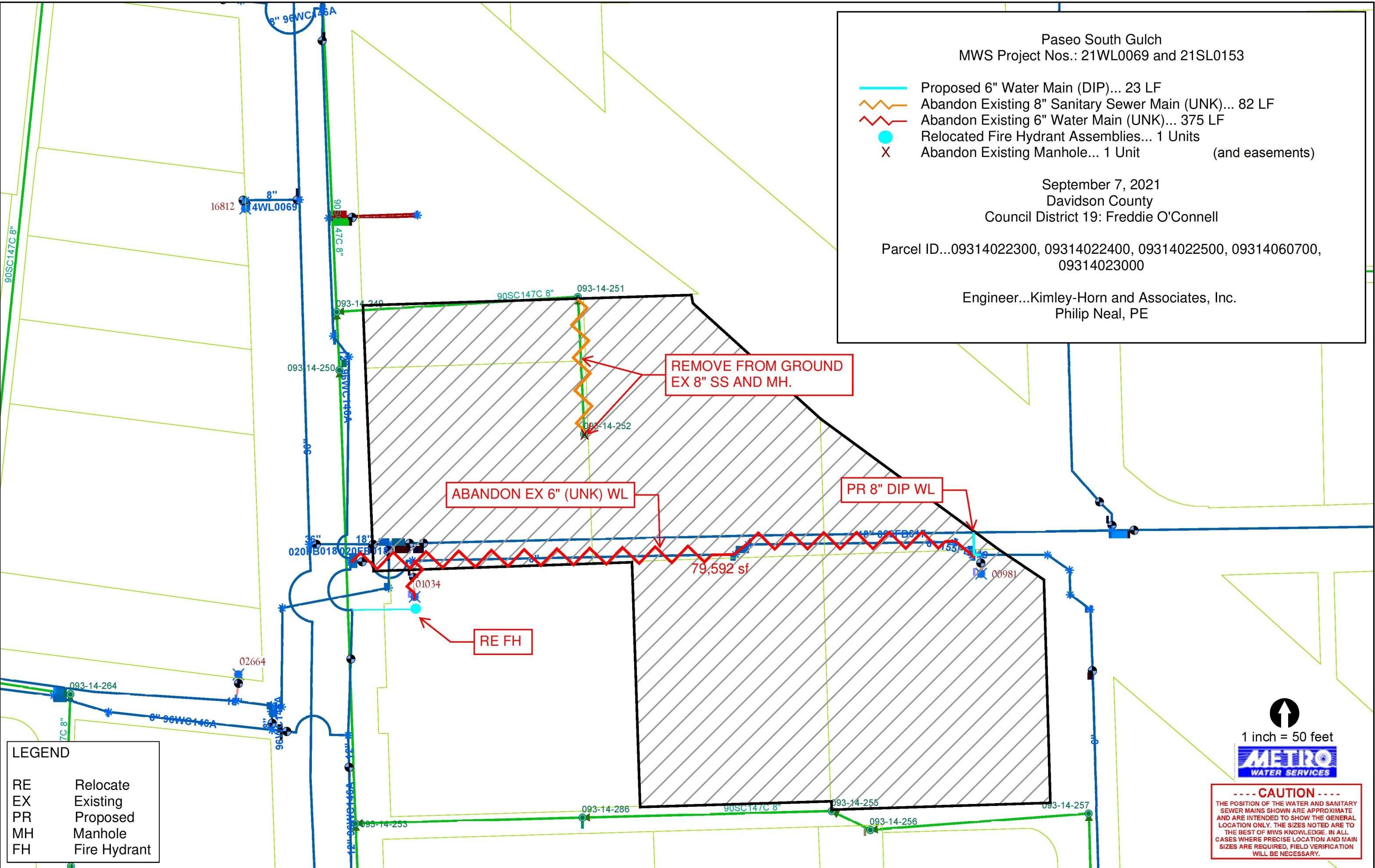
Paseo South Gulch  
MWS Project Nos.: 21WL0069 and 21SL0153

-  Proposed 6" Water Main (DIP)... 23 LF
-  Abandon Existing 8" Sanitary Sewer Main (UNK)... 82 LF
-  Abandon Existing 6" Water Main (UNK)... 375 LF
-  Relocated Fire Hydrant Assemblies... 1 Units
-  Abandon Existing Manhole... 1 Unit (and easements)

September 7, 2021  
Davidson County  
Council District 19: Freddie O'Connell

Parcel ID...09314022300, 09314022400, 09314022500, 09314060700,  
09314023000

Engineer...Kimley-Horn and Associates, Inc.  
Philip Neal, PE



LEGEND	
RE	Relocate
EX	Existing
PR	Proposed
MH	Manhole
FH	Fire Hydrant





↑  
1 inch = 50 feet









**----- CAUTION -----**

THE POSITION OF THE WATER AND SANITARY SEWER MAINS SHOWN ARE APPROXIMATE AND ARE INTENDED TO SHOW THE GENERAL LOCATION ONLY. THE SIZES NOTED ARE TO THE BEST OF MWS KNOWLEDGE. IN ALL CASES WHERE PRECISE LOCATION AND MAIN SIZES ARE REQUIRED, FIELD VERIFICATION WILL BE NECESSARY.

Paseo South Gulch  
MWS Project Nos.: 2021057006

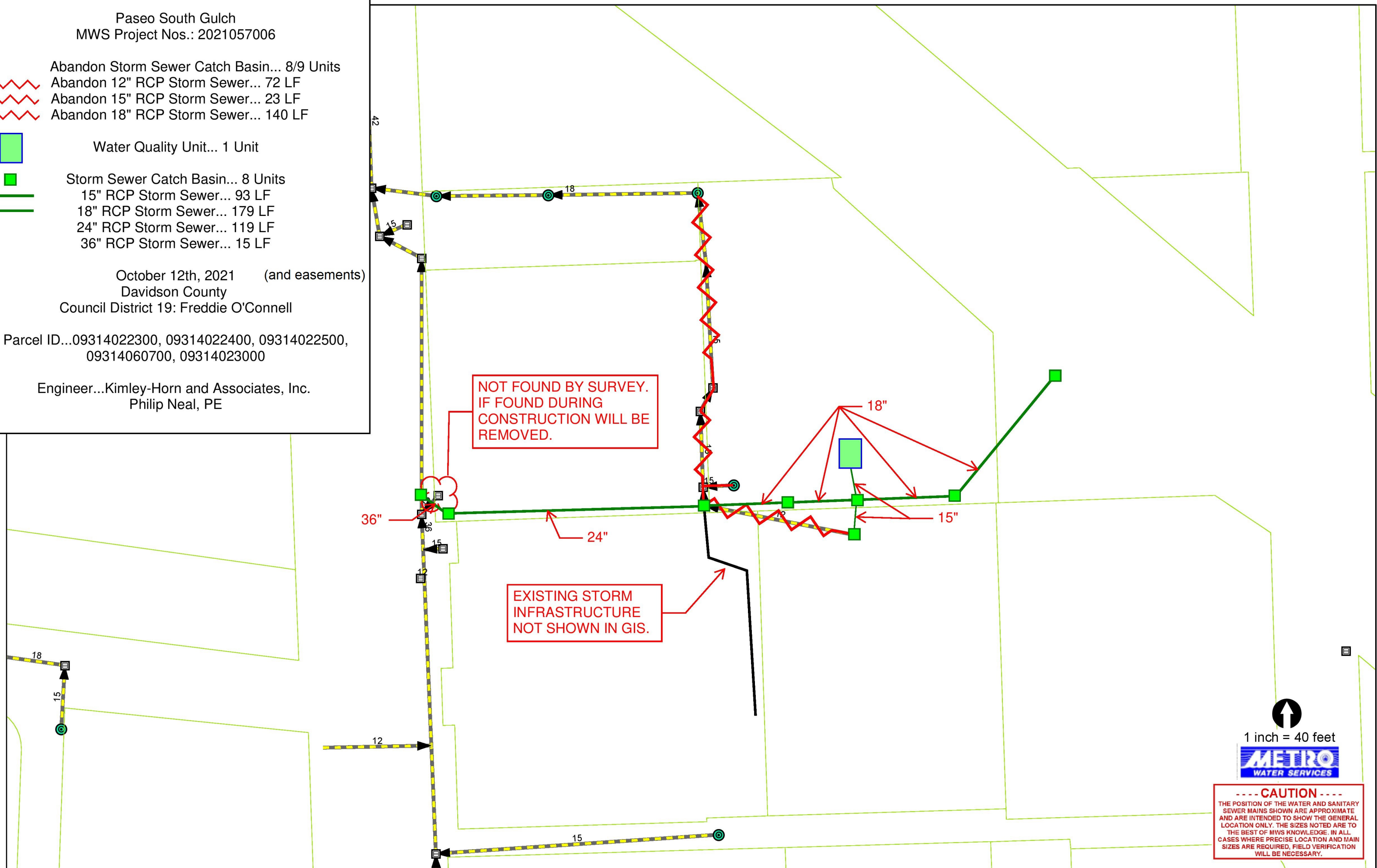
-  Abandon Storm Sewer Catch Basin... 8/9 Units
-  Abandon 12" RCP Storm Sewer... 72 LF
-  Abandon 15" RCP Storm Sewer... 23 LF
-  Abandon 18" RCP Storm Sewer... 140 LF

-  Water Quality Unit... 1 Unit
-  Storm Sewer Catch Basin... 8 Units
-  15" RCP Storm Sewer... 93 LF
-  18" RCP Storm Sewer... 179 LF
-  24" RCP Storm Sewer... 119 LF
-  36" RCP Storm Sewer... 15 LF

October 12th, 2021 (and easements)  
Davidson County  
Council District 19: Freddie O'Connell

Parcel ID...09314022300, 09314022400, 09314022500,  
09314060700, 09314023000

Engineer...Kimley-Horn and Associates, Inc.  
Philip Neal, PE



-----CAUTION-----  
THE POSITION OF THE WATER AND SANITARY SEWER MAINS SHOWN ARE APPROXIMATE AND ARE INTENDED TO SHOW THE GENERAL LOCATION ONLY. THE SIZES NOTED ARE TO THE BEST OF MWS KNOWLEDGE. IN ALL CASES WHERE PRECISE LOCATION AND MAIN SIZES ARE REQUIRED, FIELD VERIFICATION WILL BE NECESSARY.