



April 12, 2024

To: Mike Atchison Metro Water Services

**Re: Williams Retreat Phase 1  
Planning Commission Mandatory Referral 2024M-051ES-001  
Council District #03 Jennifer Gamble, Council Member**

On behalf of the Metropolitan Planning Commission, the following item, referred to the Commission as required by the Metro Charter, has been recommended for *approval* to the Metropolitan Council:

*A request for the acceptance of approximately 679 linear feet of eight-inch sanitary sewer mains (PVC), 53 linear feet of eight-inch sanitary sewer mains (DIP), six sanitary sewer manholes, and easements to serve the Williams Retreat Phase 1 development.*

The relevant Metro agencies (Metro Parks, Nashville Department of Transportation, Metro Water Services, Metro Emergency Communications, the Nashville Electric Service, Metro Finance – Public Property and the Metro Historical Commission) have reviewed the proposal and concur in the recommendation for approval. This request must be approved by the Metro Council to become effective. A sketch showing the location of the request is attached to this letter.

**Conditions that apply to this approval: none**

This recommendation for approval is given as set forth in the Metropolitan Planning Commission Rules and Procedures. If you have any questions about this matter, please contact Delilah Rhodes at [Delilah.Rhodes@nashville.gov](mailto:Delilah.Rhodes@nashville.gov) or 615-862-7208

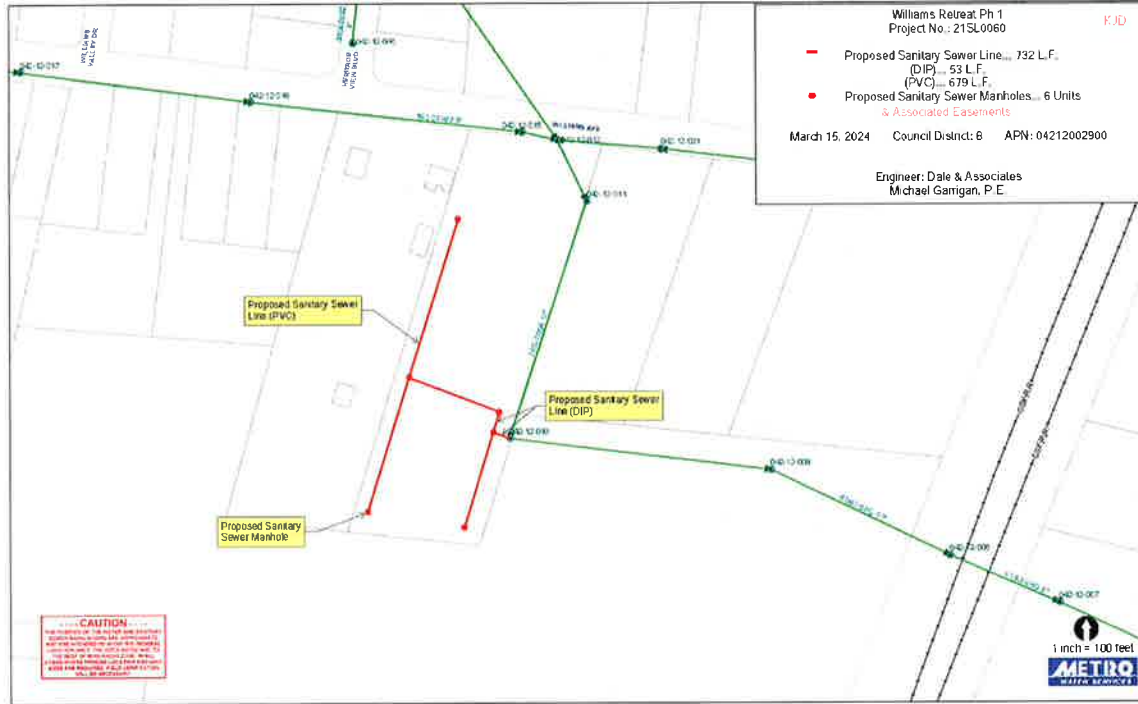
Sincerely,

A handwritten signature in blue ink, appearing to read "Lisa Milligan", is written over the typed name.

Lisa Milligan  
Assistant Director Land Development  
Metro Planning Department  
cc: *Metro Clerk*

**Re: Williams Retreat Phase 1  
Planning Commission Mandatory Referral 2024M-051ES-001  
Council District #03 Jennifer Gamble, Council Member**

*A request for the acceptance of approximately 679 linear feet of eight-inch sanitary sewer mains (PVC), 53 linear feet of eight-inch sanitary sewer mains (DIP), six sanitary sewer manholes, and easements to serve the Williams Retreat Phase 1 development.*



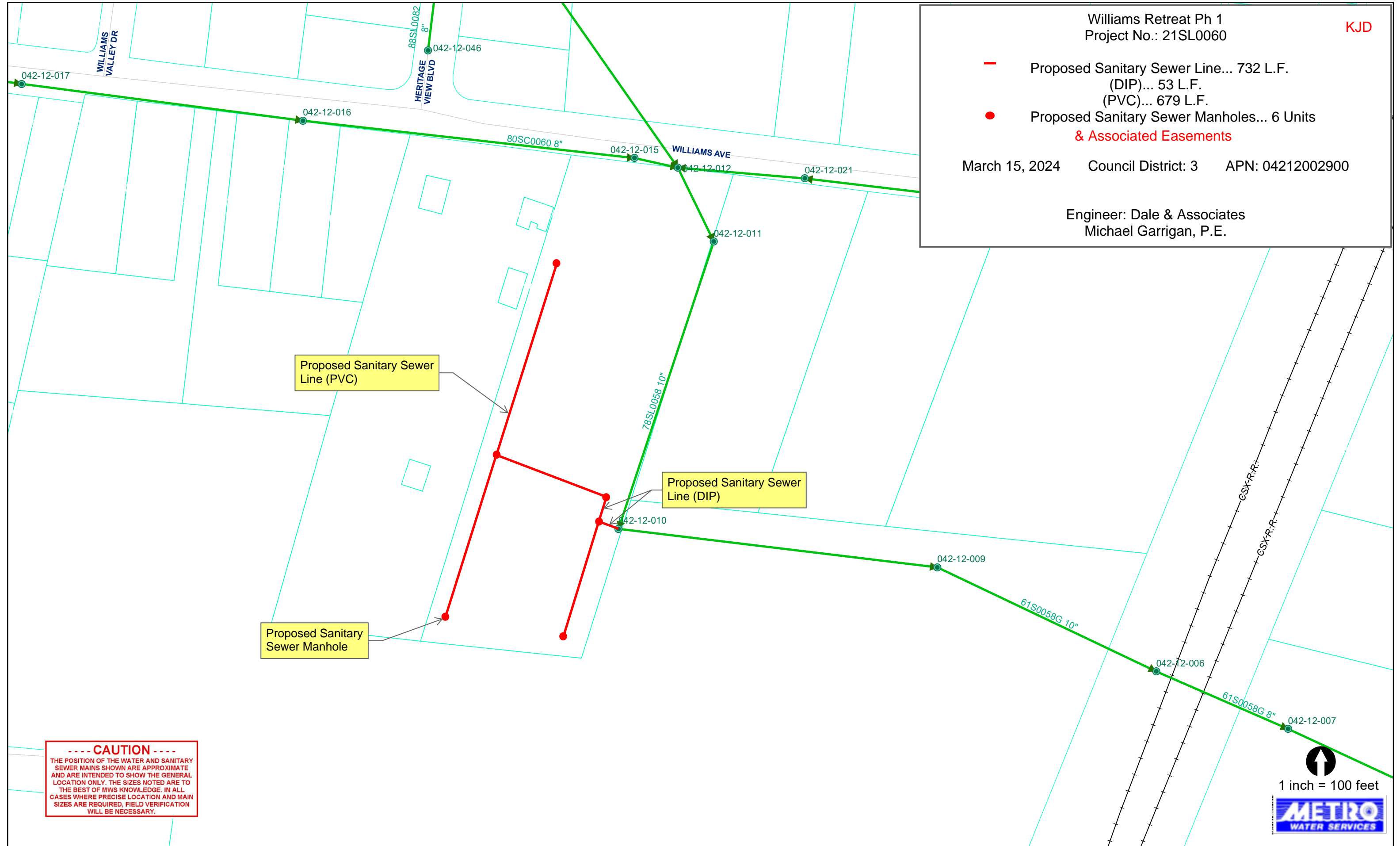
Williams Retreat Ph 1  
Project No.: 21SL0060

KJD

- Proposed Sanitary Sewer Line... 732 L.F.  
(DIP)... 53 L.F.  
(PVC)... 679 L.F.
- Proposed Sanitary Sewer Manholes... 6 Units  
& Associated Easements

March 15, 2024 Council District: 3 APN: 04212002900

Engineer: Dale & Associates  
Michael Garrigan, P.E.



**----- CAUTION -----**  
 THE POSITION OF THE WATER AND SANITARY SEWER MAINS SHOWN ARE APPROXIMATE AND ARE INTENDED TO SHOW THE GENERAL LOCATION ONLY. THE SIZES NOTED ARE TO THE BEST OF MWS KNOWLEDGE. IN ALL CASES WHERE PRECISE LOCATION AND MAIN SIZES ARE REQUIRED, FIELD VERIFICATION WILL BE NECESSARY.

