



**METROPOLITAN GOVERNMENT OF NASHVILLE
AND DAVIDSON COUNTY**

Metro Office Building
800 President Ronald Reagan Way
P.O. Box 196300
Nashville, TN 37219-6300

January 6, 2023

To: Edward Thurman Metro Water Services

**Re: 600 SOUTHGATE AVENUE DEVELOPMENT
Planning Commission Mandatory Referral #2022M-189ES-001
Council District #17 Colby Sledge, Council Member**

On behalf of the Metropolitan Planning Commission, the following item, referred to the Commission as required by the Metro Charter, has been recommended for *approval* to the Metropolitan Council:

A request for the acceptance of approximately 260 linear feet of eight-inch sanitary sewer main (PVC) and one sanitary sewer manhole to serve the development at 600 Southgate Avenue.

The relevant Metro agencies (Metro Parks, Metro Public Works, Metro Water Services, Metro Emergency Communications, the Nashville Electric Service, Metro Finance – Public Property and the Metro Historical Commission) have reviewed the proposal and concur in the recommendation for approval. This request must be approved by the Metro Council to become effective. A sketch showing the location of the request is attached to this letter.

Conditions that apply to this approval: none

This recommendation for approval is given as set forth in the Metropolitan Planning Commission Rules and Procedures. If you have any questions about this matter, please contact Delilah Rhodes at delilah.rhodes@nashville.gov or 615-862-7208.

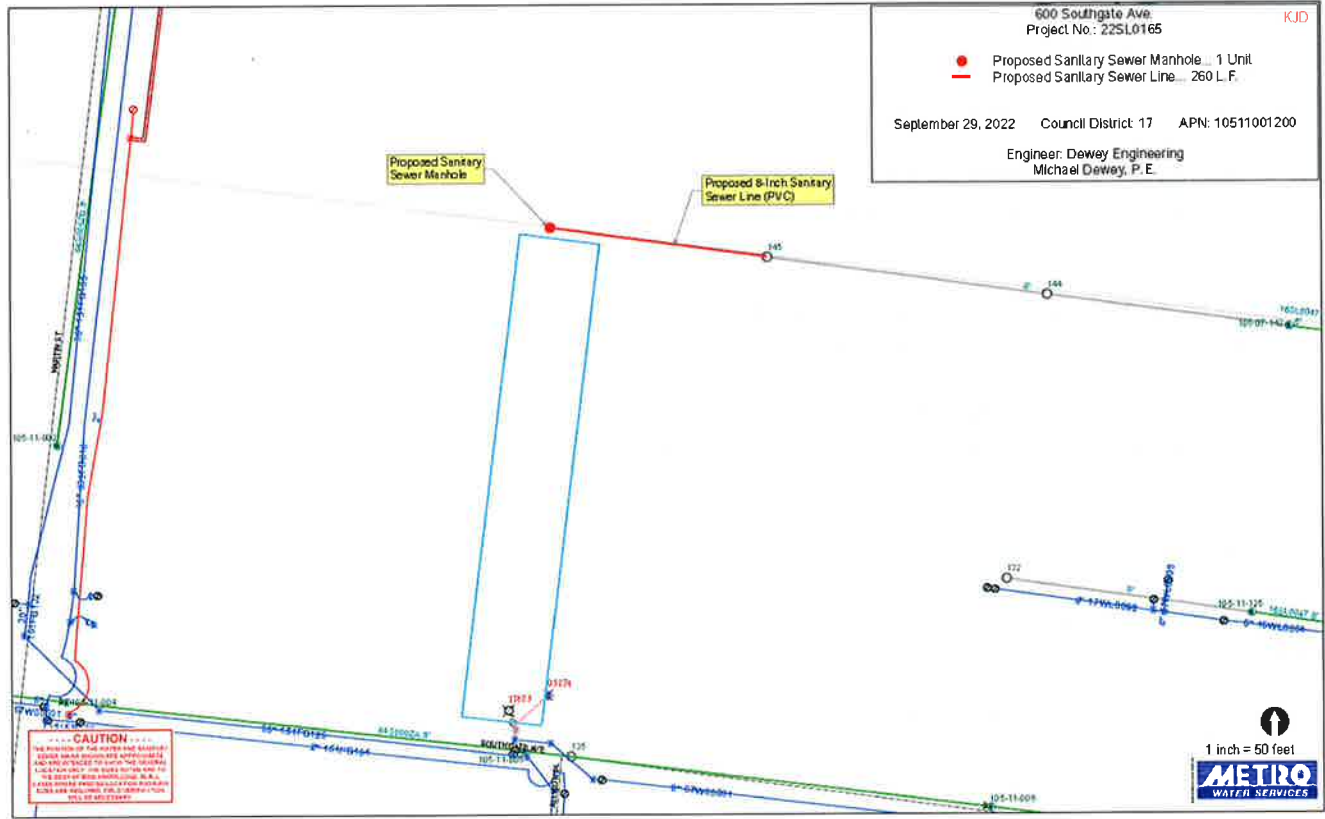
Sincerely,

A handwritten signature in blue ink that reads 'Lisa Milligan'.

Lisa Milligan
Land Development Manager
Metro Planning Department
cc: Metro Clerk

**Re: 600 SOUTHGATE AVENUE DEVELOPMENT
Planning Commission Mandatory Referral #2022M-189ES-001
Council District #17 Colby Sledge, Council Member**

A request for the acceptance of approximately 260 linear feet of eight-inch sanitary sewer main (PVC) and one sanitary sewer manhole to serve the development at 600 Southgate Avenue.



600 Southgate Ave.
Project No.: 22SL0165

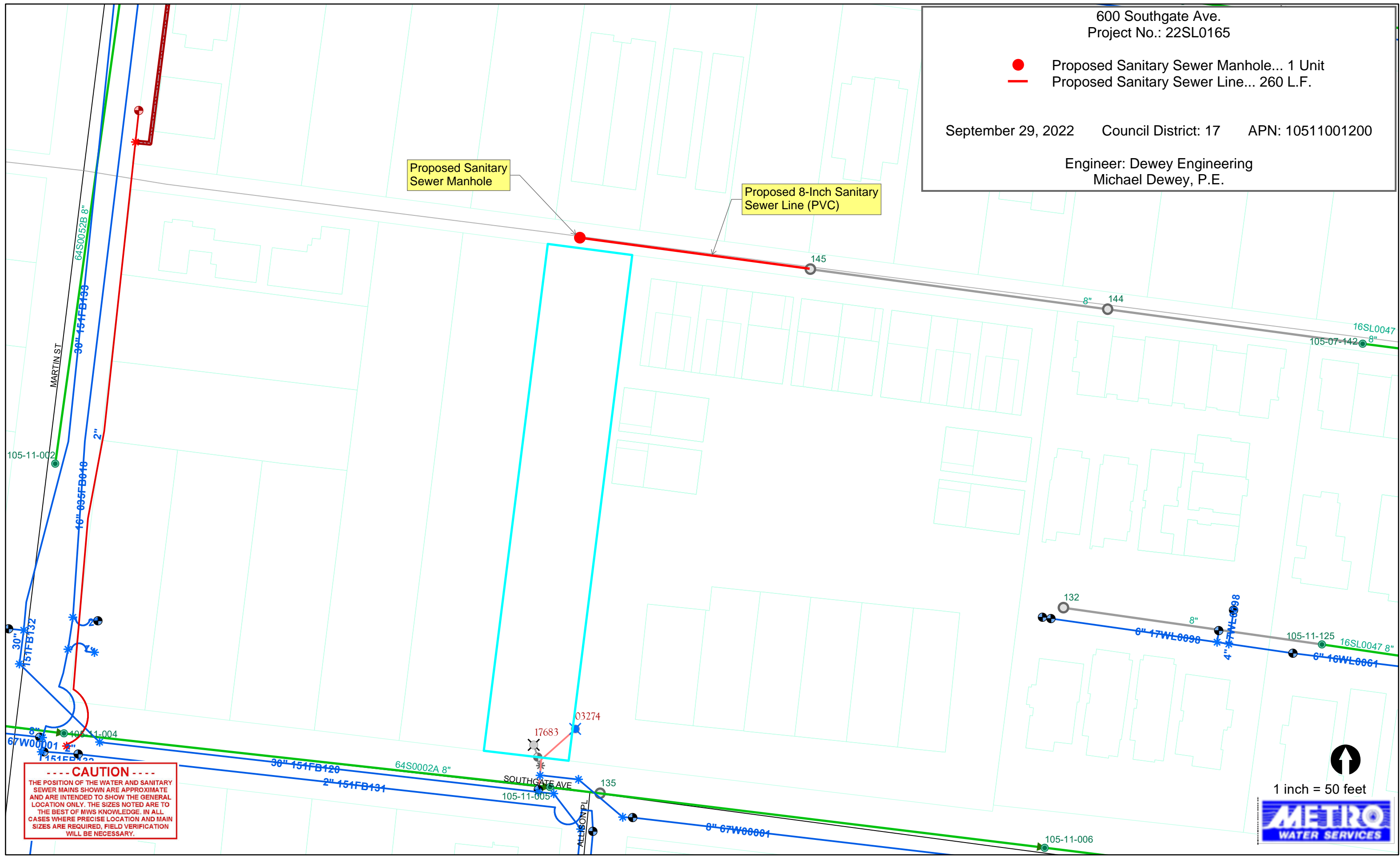
● Proposed Sanitary Sewer Manhole... 1 Unit
— Proposed Sanitary Sewer Line... 260 L.F.

September 29, 2022 Council District: 17 APN: 10511001200

Engineer: Dewey Engineering
Michael Dewey, P.E.

Proposed Sanitary Sewer Manhole

Proposed 8-Inch Sanitary Sewer Line (PVC)



----- CAUTION -----
 THE POSITION OF THE WATER AND SANITARY SEWER MAINS SHOWN ARE APPROXIMATE AND ARE INTENDED TO SHOW THE GENERAL LOCATION ONLY. THE SIZES NOTED ARE TO THE BEST OF MWS KNOWLEDGE. IN ALL CASES WHERE PRECISE LOCATION AND MAIN SIZES ARE REQUIRED, FIELD VERIFICATION WILL BE NECESSARY.

1 inch = 50 feet