



**METROPOLITAN GOVERNMENT OF NASHVILLE
AND DAVIDSON COUNTY**

Metro Office Building
800 President Ronald Reagan Way
P.O. Box 196300
Nashville, TN 37219-6300

February 2, 2023

To: Mike Atchison Metro Water Services

**Re: CANYON RIDGE PHASE 5
Planning Commission Mandatory Referral # 2023M-014ES-001
Council District #28 Tanaka Vercher, Council Member**

On behalf of the Metropolitan Planning Commission, the following item, referred to the Commission as required by the Metro Charter, has been recommended for *approval* to the Metropolitan Council:

A request for the acceptance of approximately 1,423 linear feet of 8-inch water mains (DIP), four fire hydrant assemblies, approximately 960 linear feet of 8-inch sanitary sewer main (PVC), 278 linear feet of 8-inch sanitary sewer main (DIP), 15 sanitary sewer manholes, and easements to serve the Canyon Ridge Phase 5 development.

The relevant Metro agencies (Metro Parks, Metro Public Works, Metro Water Services, Metro Emergency Communications, the Nashville Electric Service, Metro Finance – Public Property and the Metro Historical Commission) have reviewed the proposal and concur in the recommendation for approval. This request must be approved by the Metro Council to become effective. A sketch showing the location of the request is attached to this letter.

Conditions that apply to this approval: none

This recommendation for approval is given as set forth in the Metropolitan Planning Commission Rules and Procedures. If you have any questions about this matter, please contact Delilah Rhodes at delilah.rhodes@nashville.gov or 615-862-7208.

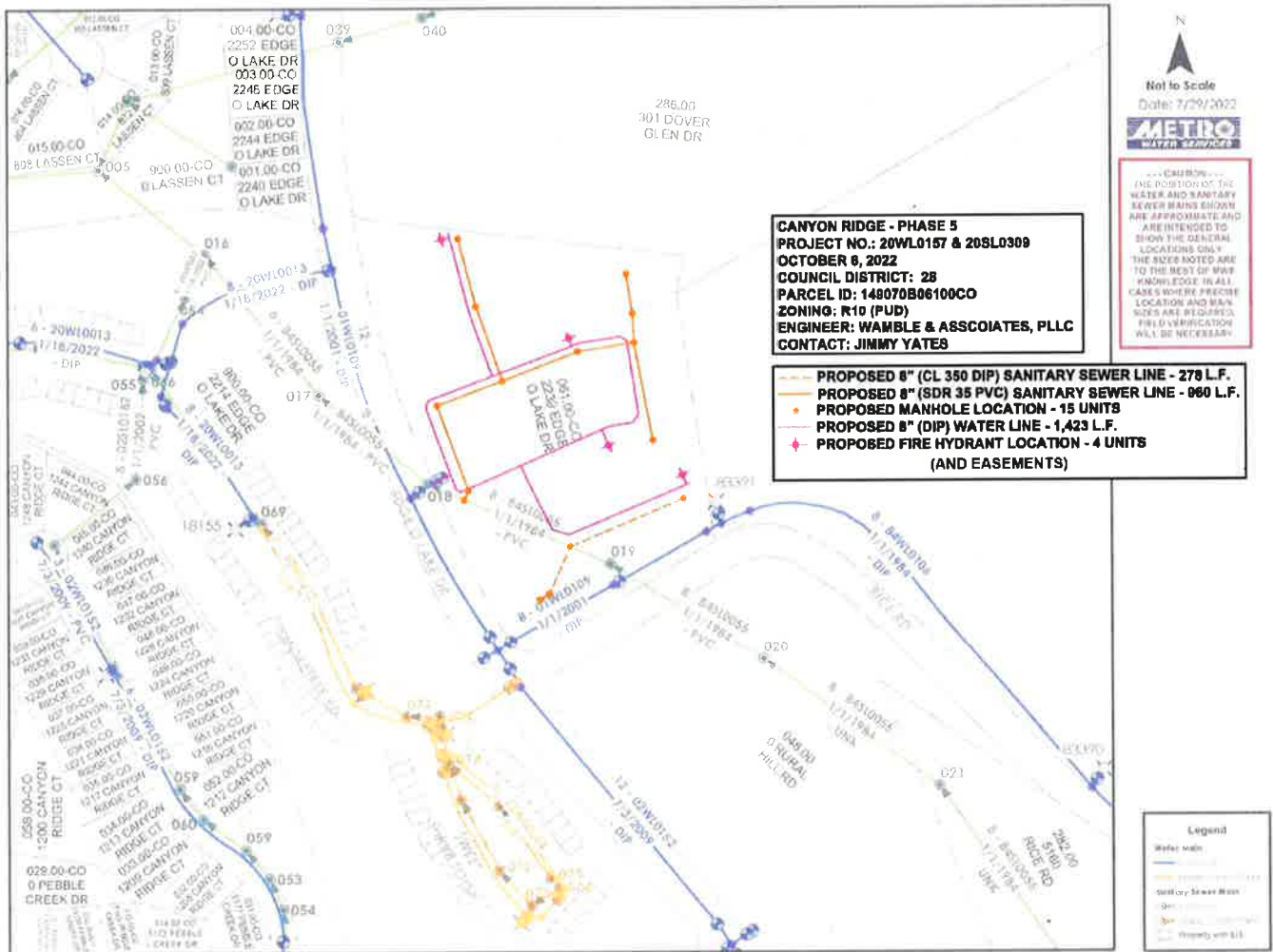
Sincerely,

A handwritten signature in blue ink that reads "Lisa Milligan".

Lisa Milligan
Land Development Manager
Metro Planning Department
cc: *Metro Clerk*

Re: CANYON RIDGE PHASE 5
Planning Commission Mandatory Referral # 2023M-014ES-001
Council District #28 Tanaka Vercher, Council Member

A request for the acceptance of approximately 1,423 linear feet of 8-inch water mains (DIP), four fire hydrant assemblies, approximately 960 linear feet of 8-inch sanitary sewer main (PVC), 278 linear feet of 8-inch sanitary sewer main (DIP), 15 sanitary sewer manholes, and easements to serve the Canyon Ridge Phase 5 development.





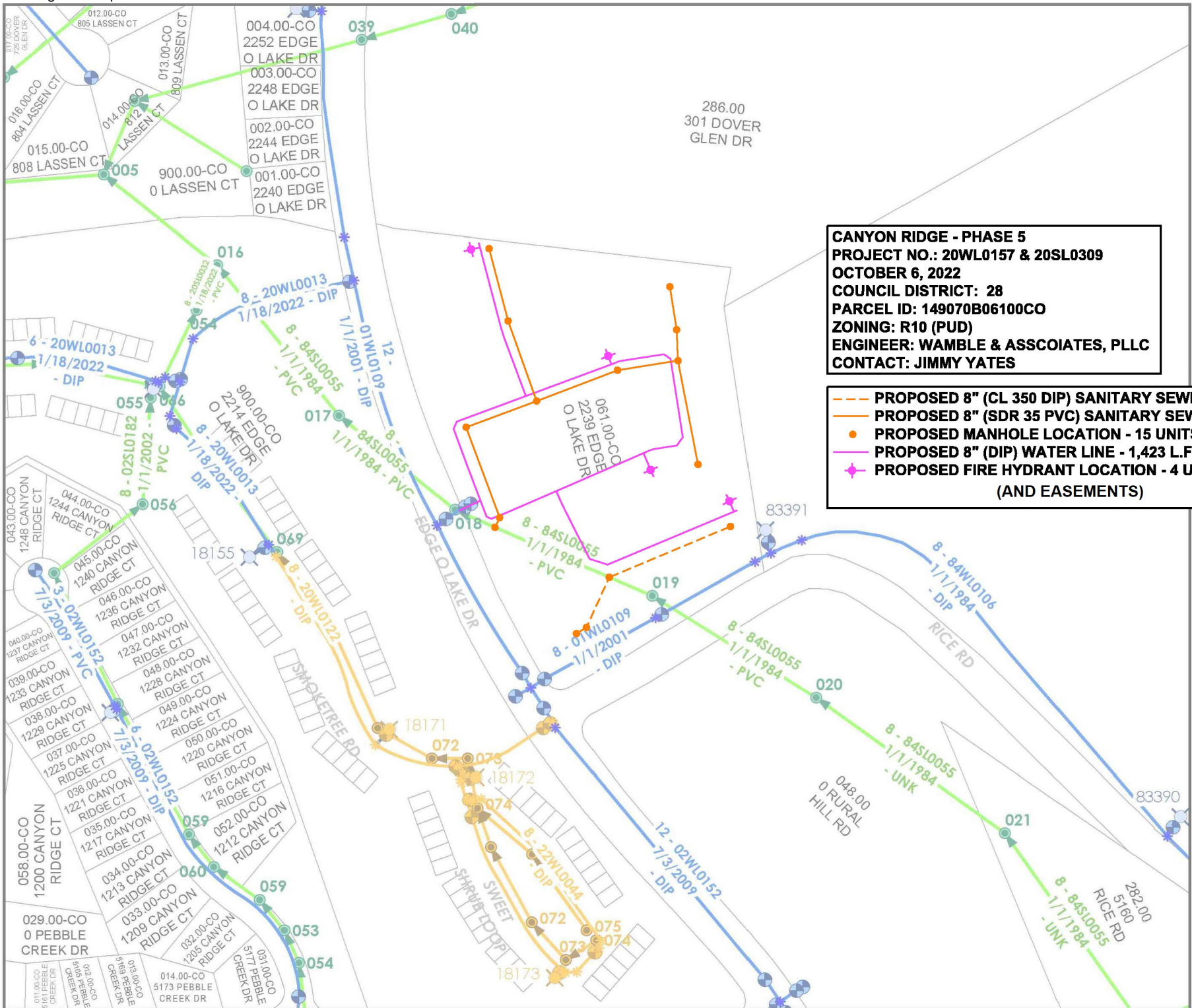
Not to Scale
Date: 7/29/2022



--- CAUTION ---
THE POSITION OF THE WATER AND SANITARY SEWER MAINS SHOWN ARE APPROXIMATE AND ARE INTENDED TO SHOW THE GENERAL LOCATIONS ONLY. THE SIZES NOTED ARE TO THE BEST OF MWS KNOWLEDGE. IN ALL CASES WHERE PRECISE LOCATION AND MAIN SIZES ARE REQUIRED, FIELD VERIFICATION WILL BE NECESSARY.

CANYON RIDGE - PHASE 5
PROJECT NO.: 20WL0157 & 20SL0309
OCTOBER 6, 2022
COUNCIL DISTRICT: 28
PARCEL ID: 149070B06100CO
ZONING: R10 (PUD)
ENGINEER: WAMBLE & ASSOICIATES, PLLC
CONTACT: JIMMY YATES

--- PROPOSED 8" (CL 350 DIP) SANITARY SEWER LINE - 278 L.F. ---
 --- PROPOSED 8" (SDR 35 PVC) SANITARY SEWER LINE - 960 L.F. ---
 ● PROPOSED MANHOLE LOCATION - 15 UNITS
 --- PROPOSED 8" (DIP) WATER LINE - 1,423 L.F. ---
 ◆ PROPOSED FIRE HYDRANT LOCATION - 4 UNITS
 (AND EASEMENTS)



Legend

- Water Main**
 - In Service (Blue line)
 - Under Construction (Yellow line)
- Sanitary Sewer Main**
 - In Service (Green line)
 - Under Construction (Orange line)
- Property with LIS (White square)