



**METROPOLITAN GOVERNMENT OF NASHVILLE
AND DAVIDSON COUNTY**

Metro Office Building
800 President Ronald Reagan Way
P.O. Box 196300
Nashville, TN 37219-6300

November 30, 2022

To: Stephanie James Metro Water Services

**Re: ANDERSON TOWNHOMES
Planning Commission Mandatory Referral #2022M-182ES-001
Council District #09 Tonya Hancock, Council Member**

On behalf of the Metropolitan Planning Commission, the following item, referred to the Commission as required by the Metro Charter, has been recommended for *approval* to the Metropolitan Council:

A request for the acceptance of one manhole to serve the Anderson Townhomes development. (see sketch for details).

The relevant Metro agencies (Metro Parks, Metro Public Works, Metro Water Services, Metro Emergency Communications, the Nashville Electric Service, Metro Finance – Public Property and the Metro Historical Commission) have reviewed the proposal and concur in the recommendation for approval. This request must be approved by the Metro Council to become effective. A sketch showing the location of the request is attached to this letter.

Conditions that apply to this approval: none

This recommendation for approval is given as set forth in the Metropolitan Planning Commission Rules and Procedures. If you have any questions about this matter, please contact Delilah Rhodes at delilah.rhodes@nashville.gov or 615-862-7208.

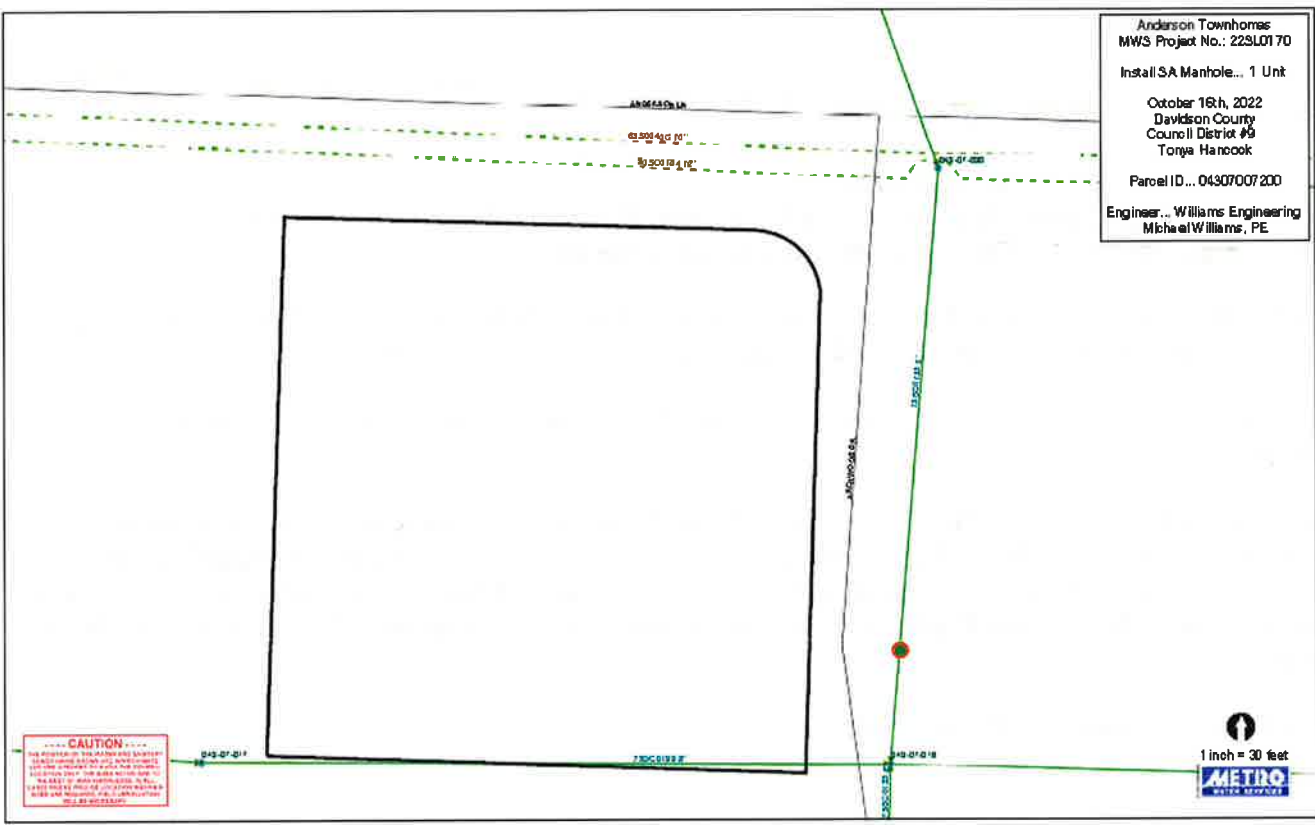
Sincerely,

A handwritten signature in blue ink, appearing to read "Lisa Milligan".

Lisa Milligan
Land Development Manager
Metro Planning Department
cc: Metro Clerk

Re: ANDERSON TOWNHOMES
Planning Commission Mandatory Referral #2022M-182ES-001
Council District #09 Tonya Hancock, Council Member

A request for the acceptance of one manhole to serve the Anderson Townhomes development. (see sketch for details).



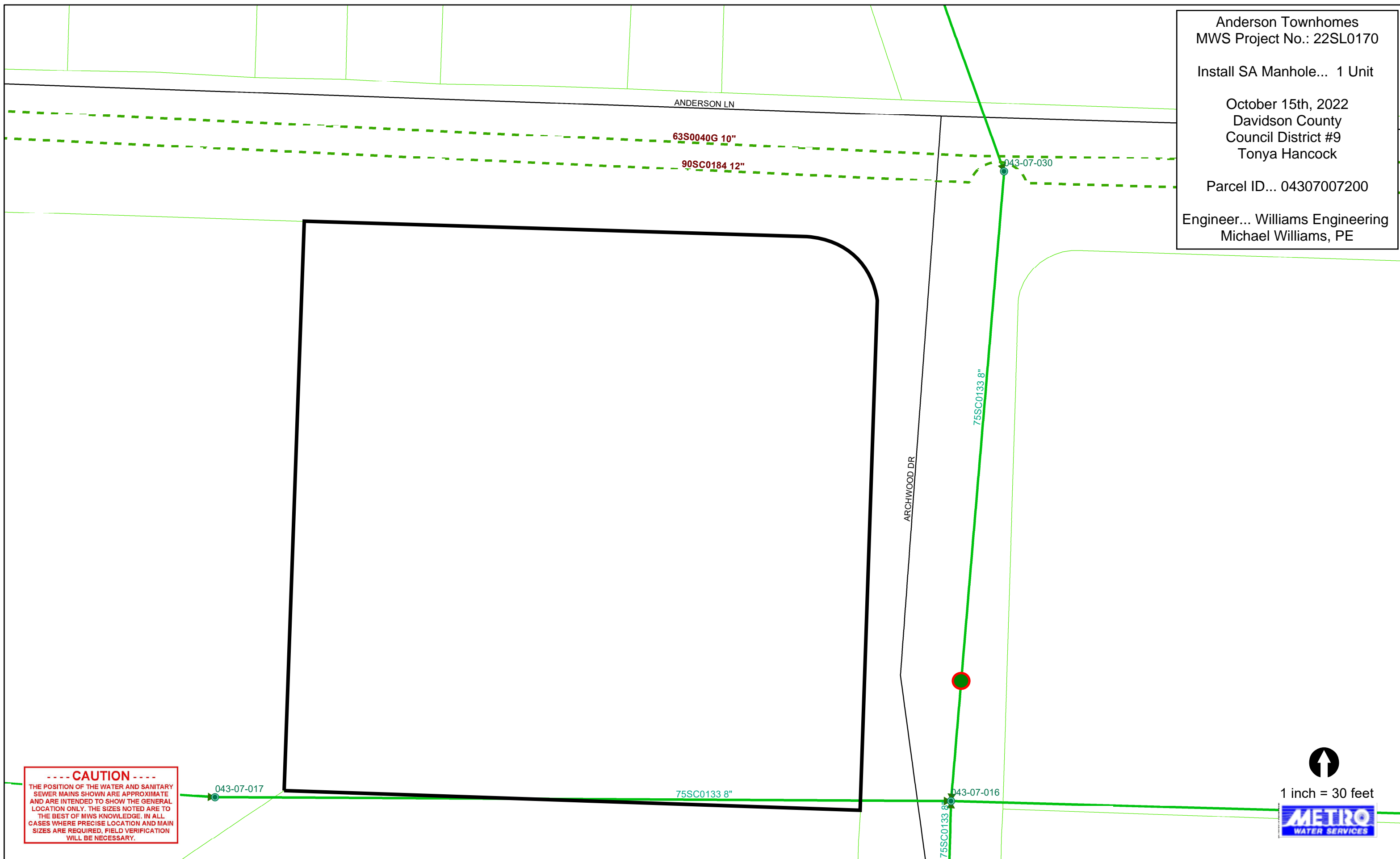
Anderson Townhomes
 MWS Project No.: 22SL0170

Install SA Manhole... 1 Unit

October 15th, 2022
 Davidson County
 Council District #9
 Tonya Hancock

Parcel ID... 04307007200

Engineer... Williams Engineering
 Michael Williams, PE



----- CAUTION -----
 THE POSITION OF THE WATER AND SANITARY SEWER MAINS SHOWN ARE APPROXIMATE AND ARE INTENDED TO SHOW THE GENERAL LOCATION ONLY. THE SIZES NOTED ARE TO THE BEST OF MWS KNOWLEDGE. IN ALL CASES WHERE PRECISE LOCATION AND MAIN SIZES ARE REQUIRED, FIELD VERIFICATION WILL BE NECESSARY.

