



**METROPOLITAN GOVERNMENT
OF NASHVILLE AND DAVIDSON COUNTY**

Planning Department
Metro Office Building
800 Second Avenue South
Nashville, Tennessee 37201

June 30, 2022

To: Edward Thurman, Metro Water

**Re: PROJECT C HOTEL DEVELOPMENT
Planning Commission Mandatory Referral #2022M-090ES-001
Council District #21 Brandon Taylor, Council Member**

On behalf of the Metropolitan Planning Commission, the following item, referred to the Commission as required by the Metro Charter, has been recommended for *approval* to the Metropolitan Council:

A request for approval for the abandonment of approximately 247 linear feet of 10-inch sanitary sewer main and two sanitary sewer manholes, and the acceptance of approximately 247 linear feet of sanitary sewer main (PVC) and three sanitary sewer manholes to serve the Project C hotel development.

The relevant Metro agencies (Metro Parks, Metro Public Works, Metro Water Services, Metro Emergency Communications, the Nashville Electric Service, Metro Finance – Public Property and the Metro Historical Commission) have reviewed the proposal and concur in the recommendation for approval. This request must be approved by the Metro Council to become effective. A sketch showing the location of the request is attached to this letter.

Conditions that apply to this approval: none

This recommendation for approval is given as set forth in the Metropolitan Planning Commission Rules and Procedures. If you have any questions about this matter, please contact Delilah Rhodes at delilah.rhodes@nashville.gov or 615-862-7208.

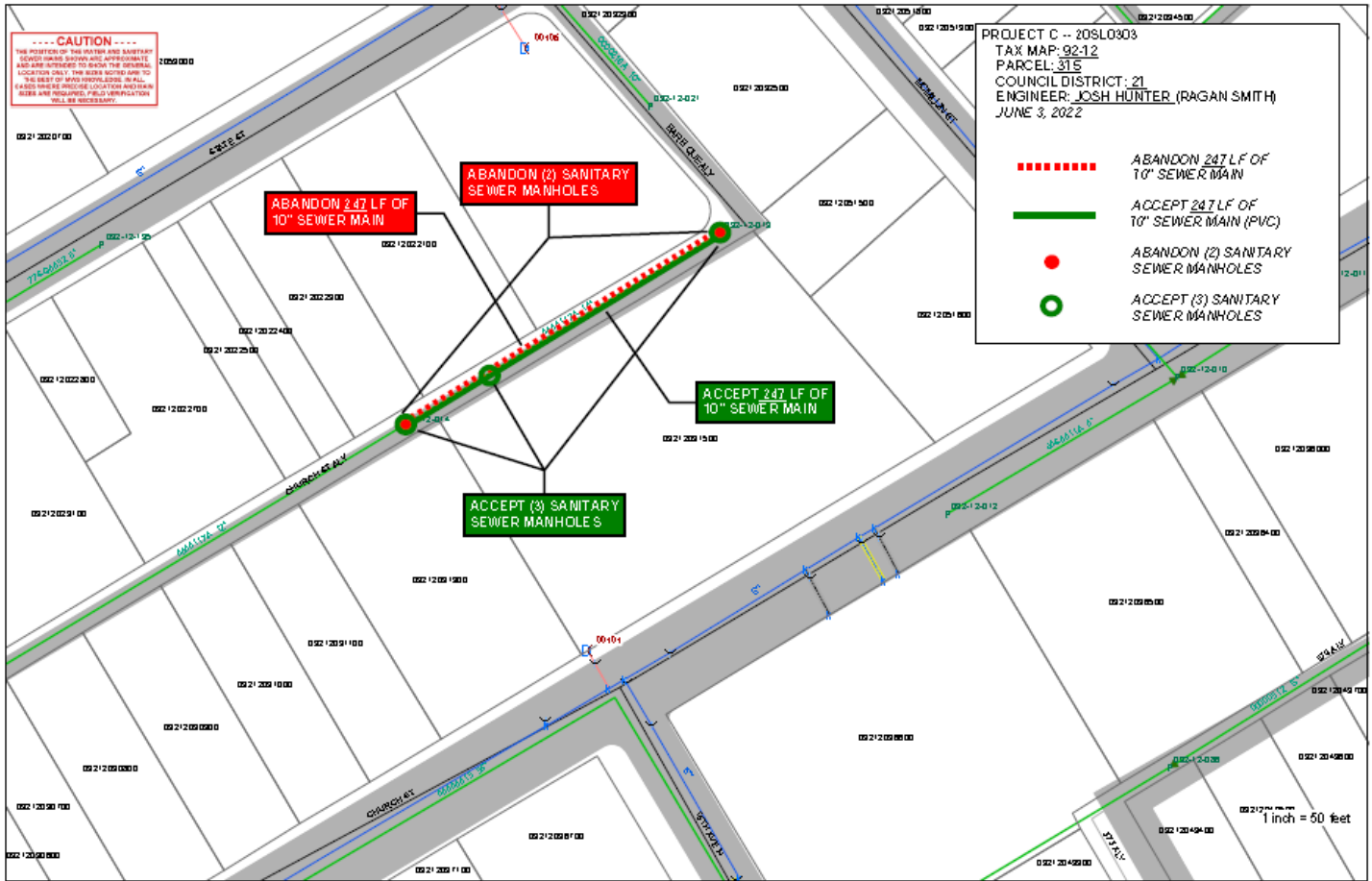
Sincerely,

A handwritten signature in black ink that reads 'Robert Leeman'.

Robert Leeman
Deputy Director
Metro Planning Department
cc: *Metro Clerk*

Re: PROJECT C HOTEL DEVELOPMENT
Planning Commission Mandatory Referral #2022M-090ES-001
Council District #21 Brandon Taylor, Council Member

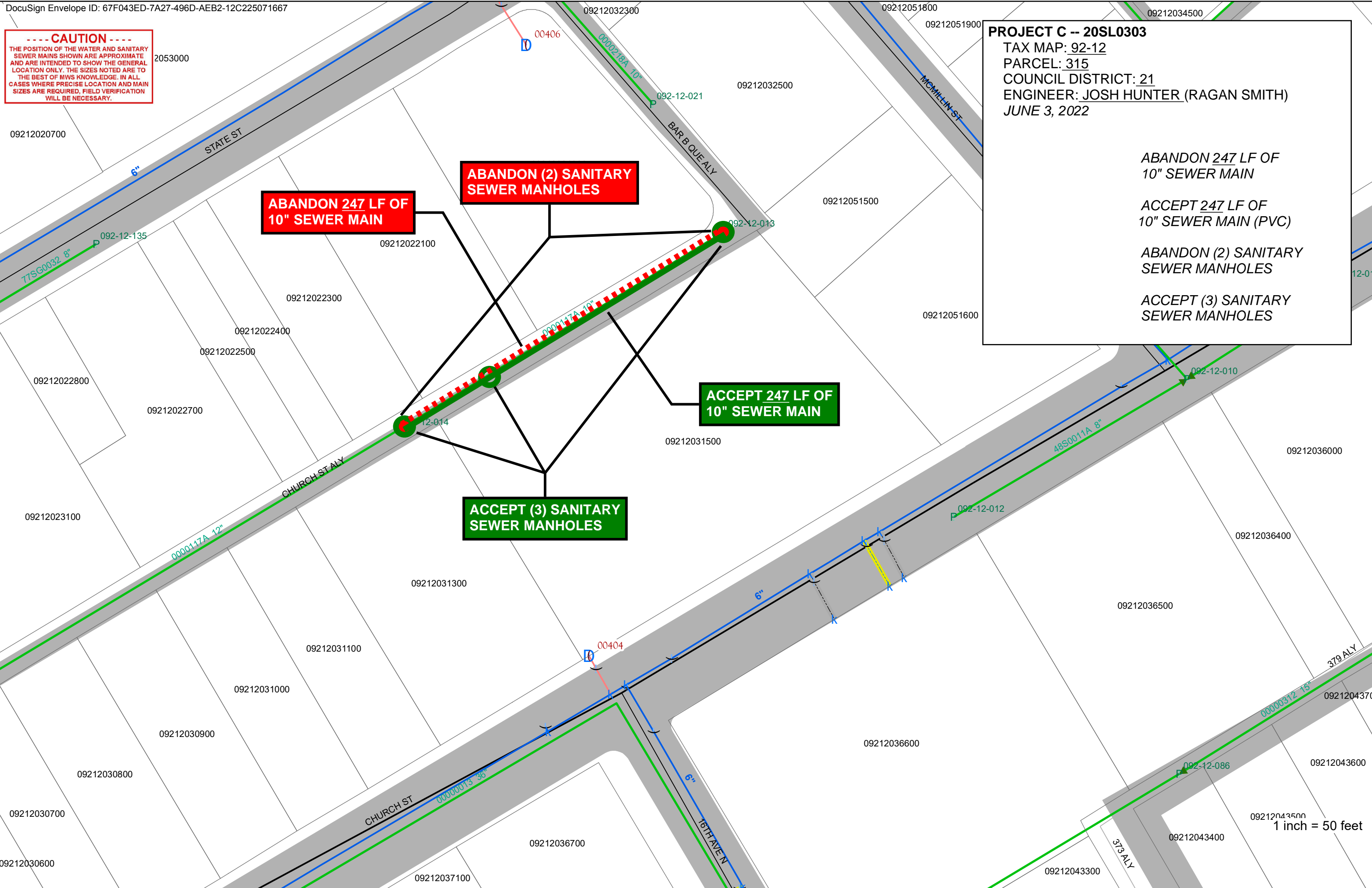
A request for approval for the abandonment of approximately 247 linear feet of 10-inch sanitary sewer main and two sanitary sewer manholes, and the acceptance of approximately 247 linear feet of sanitary sewer main (PVC) and three sanitary sewer manholes to serve the Project C hotel development.



----- CAUTION -----
THE POSITION OF THE WATER AND SANITARY SEWER MAINS SHOWN ARE APPROXIMATE AND ARE INTENDED TO SHOW THE GENERAL LOCATION ONLY. THE SIZES NOTED ARE TO THE BEST OF MWS KNOWLEDGE. IN ALL CASES WHERE PRECISE LOCATION AND MAIN SIZES ARE REQUIRED, FIELD VERIFICATION WILL BE NECESSARY.

PROJECT C -- 20SL0303
TAX MAP: 92-12
PARCEL: 315
COUNCIL DISTRICT: 21
ENGINEER: JOSH HUNTER (RAGAN SMITH)
JUNE 3, 2022

ABANDON 247 LF OF 10" SEWER MAIN
ACCEPT 247 LF OF 10" SEWER MAIN (PVC)
ABANDON (2) SANITARY SEWER MANHOLES
ACCEPT (3) SANITARY SEWER MANHOLES



ABANDON 247 LF OF 10" SEWER MAIN

ABANDON (2) SANITARY SEWER MANHOLES

ACCEPT 247 LF OF 10" SEWER MAIN

ACCEPT (3) SANITARY SEWER MANHOLES

1 inch = 50 feet