







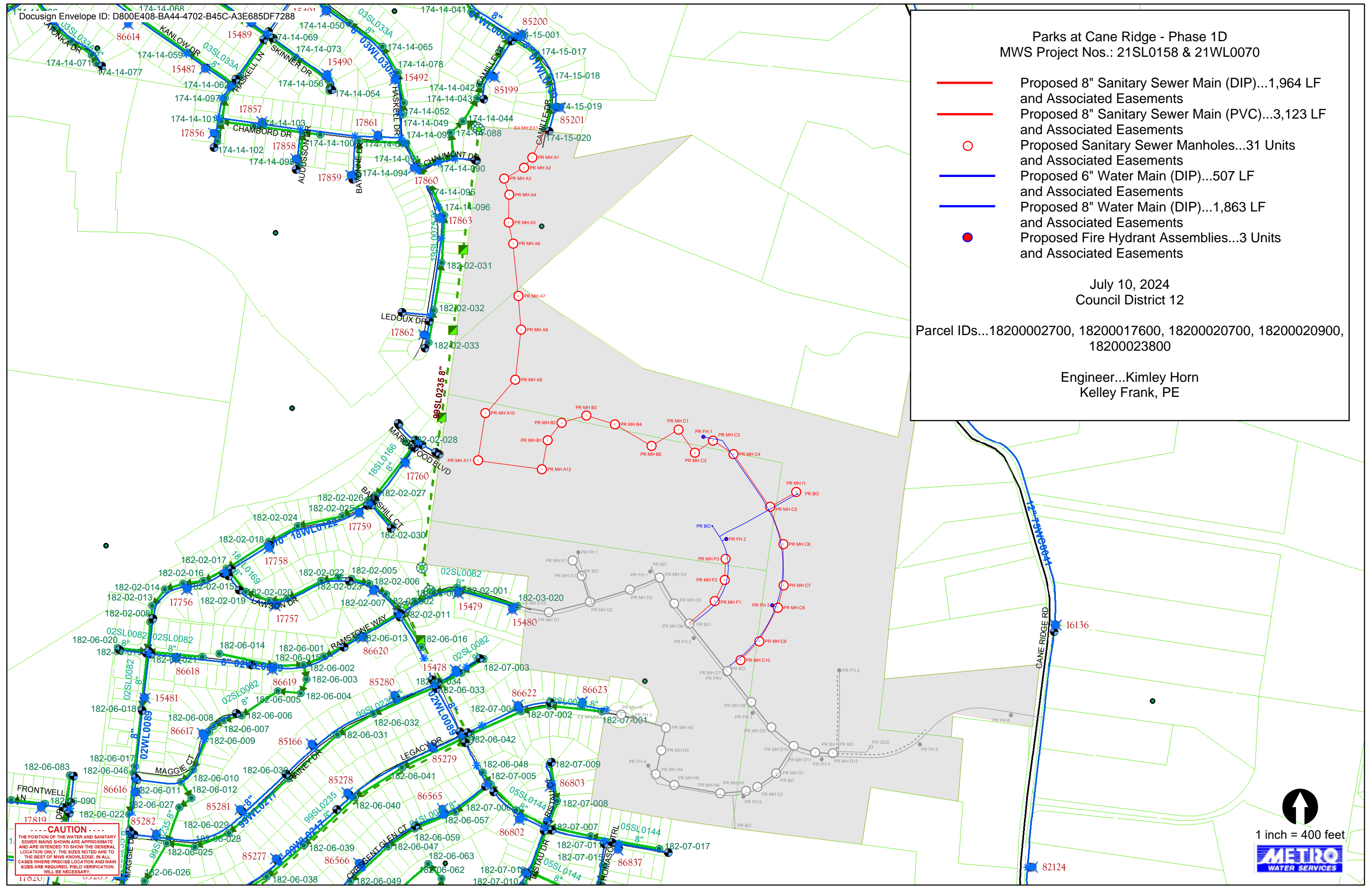
Parks at Cane Ridge - Phase 1D MWS Project Nos.: 21SL0158 & 21WL0070

-  Proposed 8" Sanitary Sewer Main (DIP)...1,964 LF and Associated Easements
-  Proposed 8" Sanitary Sewer Main (PVC)...3,123 LF and Associated Easements
-  Proposed Sanitary Sewer Manholes...31 Units and Associated Easements
-  Proposed 6" Water Main (DIP)...507 LF and Associated Easements
-  Proposed 8" Water Main (DIP)...1,863 LF and Associated Easements
-  Proposed Fire Hydrant Assemblies...3 Units and Associated Easements

July 10, 2024
Council District 12

Parcel IDs...18200002700, 18200017600, 18200020700, 18200020900, 18200023800



Engineer...Kimley Horn
Kelley Frank, PE



CAUTION

THE POSITION OF THE WATER AND SANITARY SEWER MAINS SHOWN ARE APPROXIMATE AND ARE INTENDED TO SHOW THE GENERAL LOCATION ONLY. THE SIZES NOTED ARE TO THE BEST OF MWS KNOWLEDGE. IN ALL CASES WHERE PRECISE LOCATION AND MAIN SIZES ARE REQUIRED, FIELD VERIFICATION WILL BE NECESSARY.

1 inch = 400 feet

**PARKS AT CANE RIDGE PHASE 1D
PROJECT NOS. 21-WL-70 AND 21-SL-158
Parcel List**

| <u>Address</u> | <u>Map/Parcels</u> | <u>Property Owners</u> |
|-----------------------|---------------------------|------------------------------------|
| 0 Cane Ridge | 18200002700 | Drapac Group 46, LLC |
| 0 Cane Ridge | 18200020700 | Meritage Homes of Tennessee, Inc. |
| 0 Cane Ridge | 18200020900 | Meritage Homes of Tennessee, Inc 0 |
| 0 Cane Ridge | 18200023800 | Meritage Homes of Tennessee, Inc |
| 5905 Cane Ridge Road | 18200017600 | Priscilla G. Walker-Brewer |

N A S H V I L L E
PLANNING

August 8, 2024

To: Stephanie James Metro Water Services

**Re: Parks at Cane Ridge Phase 1D
Planning Commission Mandatory Referral 2024M-098ES-001
Council District #33 Antoinette Lee, Council Member**

On behalf of the Metropolitan Planning Commission, the following item, referred to the Commission as required by the Metro Charter, has been recommended for *approval* to the Metropolitan Council:

A request for the acceptance of approximately 507 linear feet of six-inch water main (DIP), 1,863 linear feet of eight-inch water main (DIP), three fire hydrant assemblies and approximately 1,964 linear feet of eight-inch sanitary sewer main (DIP), 3,123 linear feet of eight-inch sanitary sewer main (PVC), 31 sanitary sewer manholes and any associated easements to serve the Parks at Cane Ridge - Phase 1D development.

The relevant Metro agencies (Metro Parks, Nashville Department of Transportation, Metro Water Services, Metro Emergency Communications, the Nashville Electric Service, Metro Finance – Public Property and the Metro Historical Commission) have reviewed the proposal and concur in the recommendation for approval. This request must be approved by the Metro Council to become effective. A sketch showing the location of the request is attached to this letter.

Conditions that apply to this approval: none

This recommendation for approval is given as set forth in the Metropolitan Planning Commission Rules and Procedures. If you have any questions about this matter, please contact Christopher Paulsen at Christopher.paulsen@nashville.gov or 615-880-2452.

Sincerely,



Lisa Milligan
Assistant Director Land Development
Metro Planning Department
cc: *Metro Clerk*

**Re: Parks at Cane Ridge Phase 1D
Planning Commission Mandatory Referral 2024M-098ES-001
Council District #33 Antoinette Lee, Council Member**

A request for the acceptance of approximately 507 linear feet of six-inch water main (DIP), 1,863 linear feet of eight-inch water main (DIP), three fire hydrant assemblies and approximately 1,964 linear feet of eight-inch sanitary sewer main (DIP), 3,123 linear feet of eight-inch sanitary sewer main (PVC), 31 sanitary sewer manholes and any associated easements to serve the Parks at Cane Ridge - Phase 1D development.

