



**METROPOLITAN GOVERNMENT OF NASHVILLE
AND DAVIDSON COUNTY**

Metro Office Building
800 President Ronald Reagan Way
P.O. Box 196300
Nashville, TN 37219-6300

May 31, 2023

To: Edward Thurman Metro Water Services

**Re: HAMILTON PLACE LOT 2
Planning Commission Mandatory Referral 2023M-083ES-001
Council District #01 Jonathan Hall, Council Member
Council District #02 Kyonzte Toombs, Council Member**

On behalf of the Metropolitan Planning Commission, the following item, referred to the Commission as required by the Metro Charter, has been recommended for *approval* to the Metropolitan Council:

A request for the acceptance of approximately 1,056 linear feet of eight-inch sanitary sewer main (DIP), seven sanitary sewer manholes and any associated easements to serve Lot 2 of the Hamilton Place development.

The relevant Metro agencies (Metro Parks, Metro Public Works, Metro Water Services, Metro Emergency Communications, the Nashville Electric Service, Metro Finance – Public Property and the Metro Historical Commission) have reviewed the proposal and concur in the recommendation for approval. This request must be approved by the Metro Council to become effective. A sketch showing the location of the request is attached to this letter.

Conditions that apply to this approval: none

This recommendation for approval is given as set forth in the Metropolitan Planning Commission Rules and Procedures. If you have any questions about this matter, please contact Delilah Rhodes at delilah.rhodes@nashville.gov or 615-862-7208.

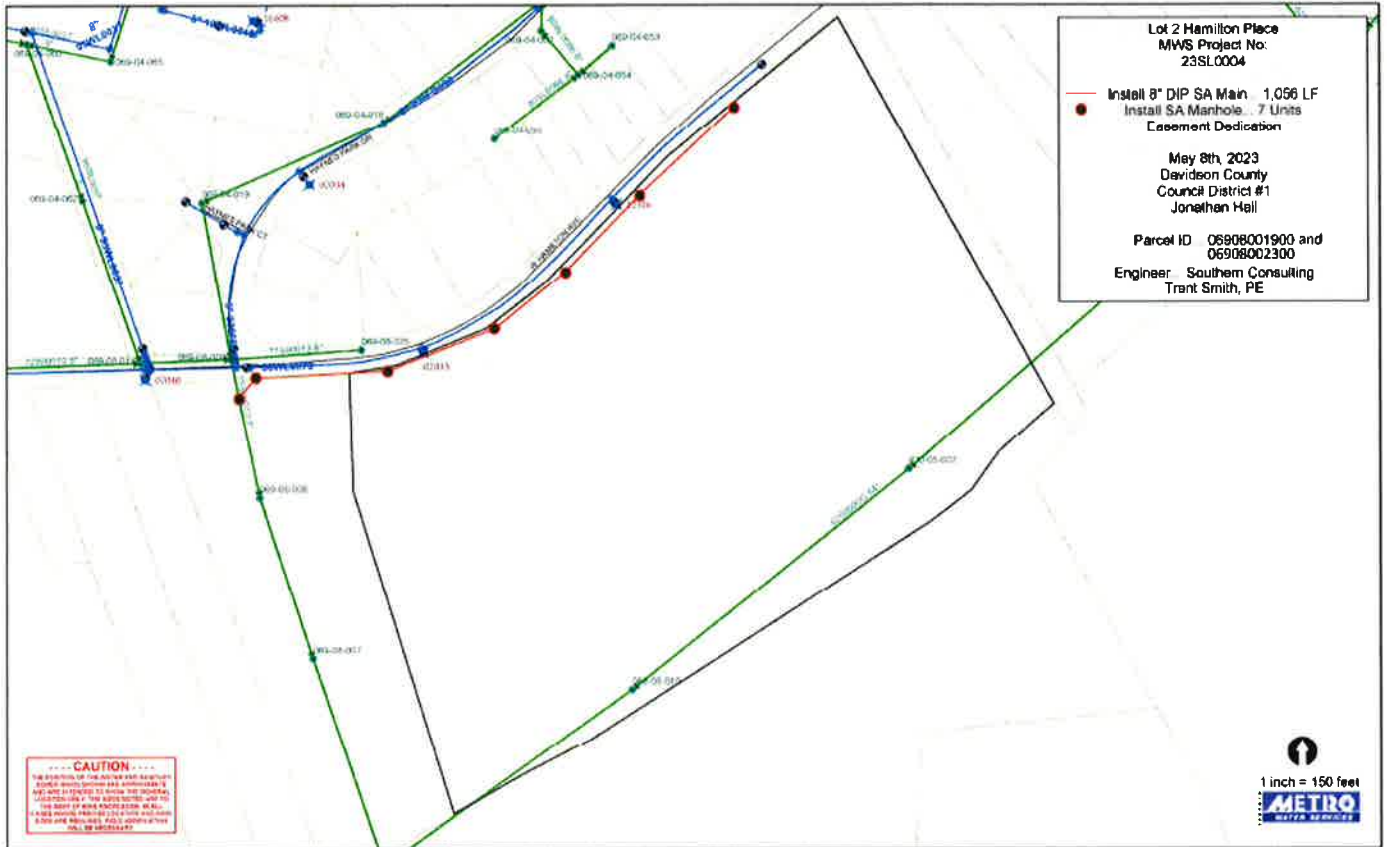
Sincerely,

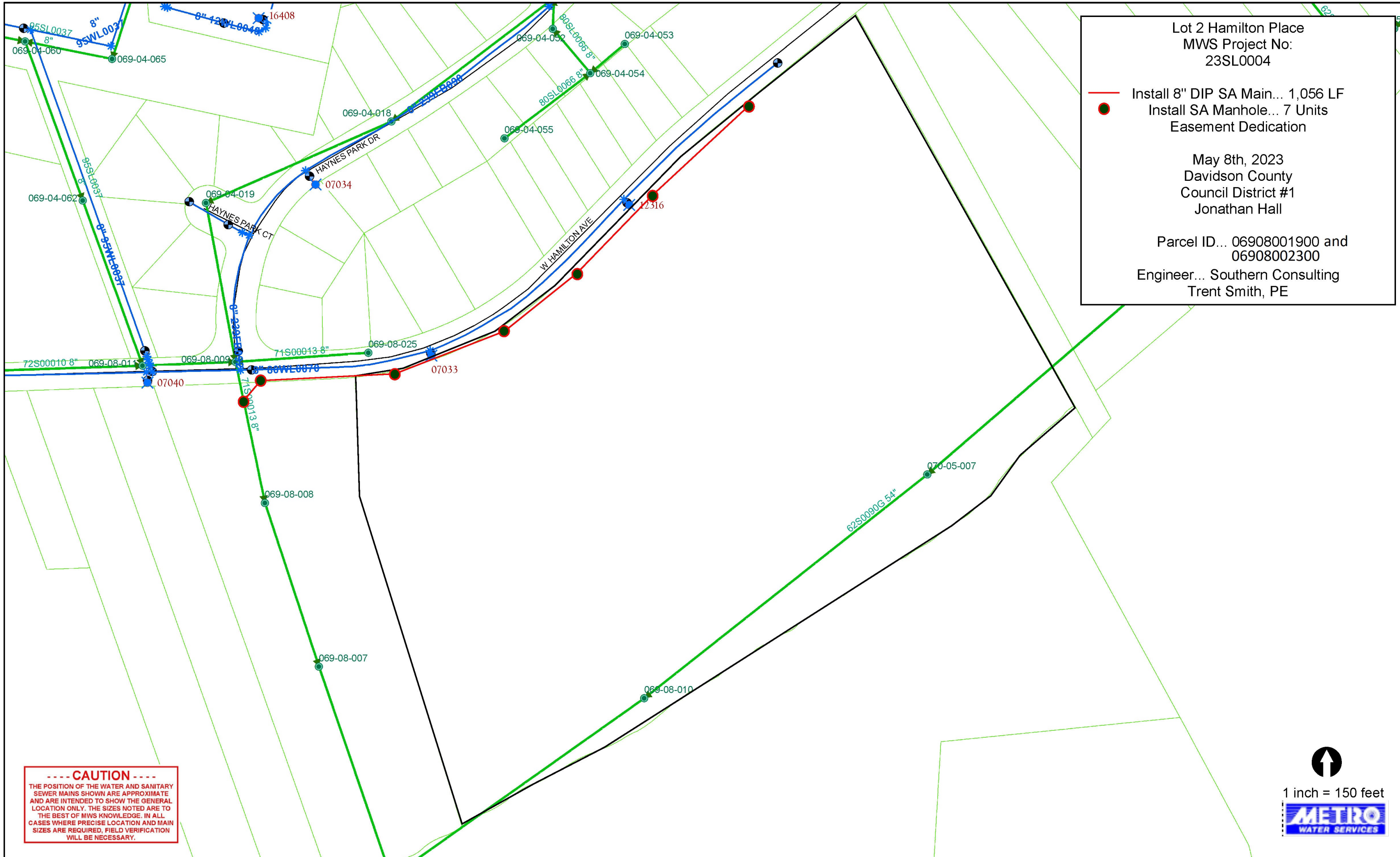
A handwritten signature in blue ink, appearing to read 'Lisa Milligan'.

Lisa Milligan
Land Development Manager
Metro Planning Department
cc: Metro Clerk

Re: HAMILTON PLACE LOT 2
Planning Commission Mandatory Referral # 2023M-083ES-001
Council District #01 Jonathan Hall, Council Member
Council District #02 Kyonzte Toombs, Council Member

A request for the acceptance of approximately 1,056 linear feet of eight-inch sanitary sewer main (DIP), seven sanitary sewer manholes and any associated easements to serve Lot 2 of the Hamilton Place development.





Lot 2 Hamilton Place
MWS Project No:
23SL0004

Install 8" DIP SA Main... 1,056 LF
Install SA Manhole... 7 Units
Easement Dedication

May 8th, 2023
Davidson County
Council District #1
Jonathan Hall

Parcel ID... 06908001900 and
06908002300
Engineer... Southern Consulting
Trent Smith, PE

----- CAUTION -----
THE POSITION OF THE WATER AND SANITARY SEWER MAINS SHOWN ARE APPROXIMATE AND ARE INTENDED TO SHOW THE GENERAL LOCATION ONLY. THE SIZES NOTED ARE TO THE BEST OF MWS KNOWLEDGE. IN ALL CASES WHERE PRECISE LOCATION AND MAIN SIZES ARE REQUIRED, FIELD VERIFICATION WILL BE NECESSARY.

↑
1 inch = 150 feet
METRO
WATER SERVICES