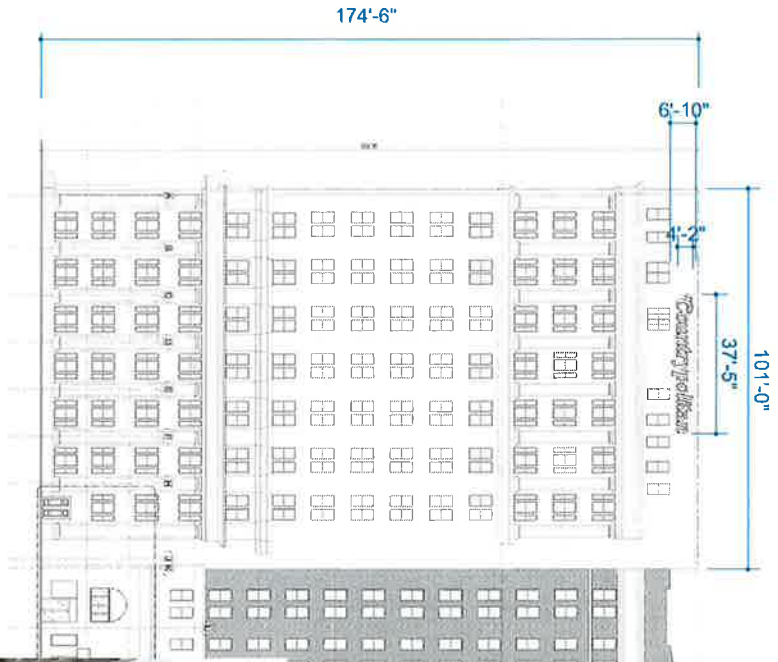


# ELEVATIONS



**A**  
4'-2"  
(50")  
**Countryopolitan**  
37'-5"

## Countryopolitan

Nighttime Appearance



Construction:  
140° aluminum channel letter with .063" aluminum beads  
(U.S.C.A. only) 1/2" x 2.0 mm welded aluminum channel letters

Face Material:  
3/16" 7328 white acrylic/4mm opal acrylic Plexiglas XT WINDRO

Trim Cap:  
1" paint to match Pantone® 425 C gray/RAL 9004, satin finish

Illumination:  
GE 7100K White LED's as required  
or Sloan Prism 24 6500K White LED's as required

Exterior Finish:  
Paint Pantone® 425 C gray/RAL 9004, satin finish

Interior Finish:  
Paint reflective white/RAL 9003

CUSTOMER APPROVAL:		DATE		DATE	
_____	BY	11/23/21	AMJ	12/14/21	AMJ
_____	BY	11/24/21	AMJ	12/22/21	AMJ
_____	BY	12/06/21	AMJ	_____	_____

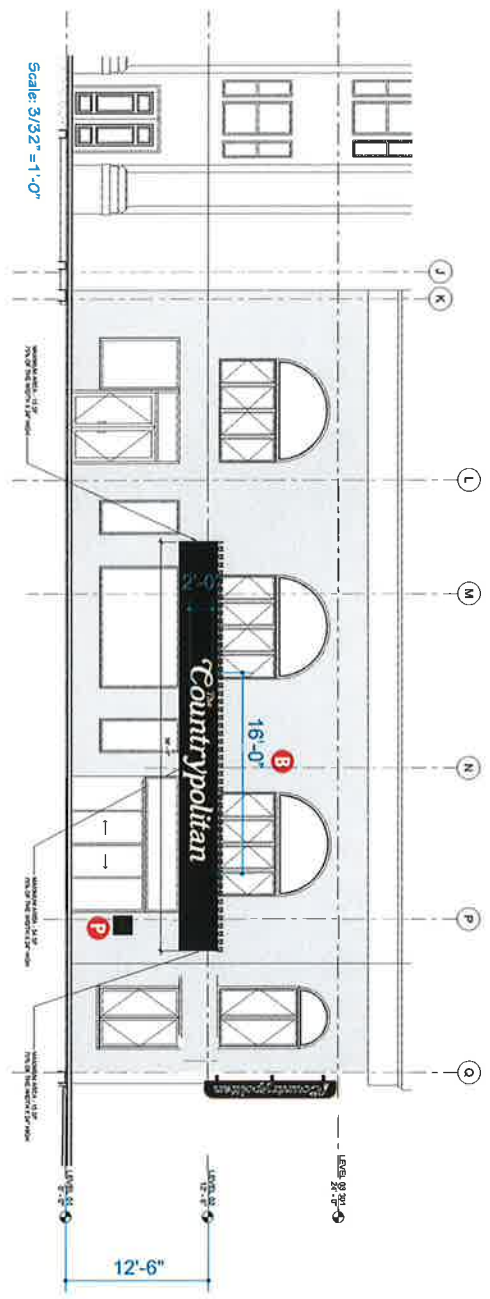
**301 UNION STREET  
NASHVILLE, TN**

**DRAWING NO:  
106632.07**  
ARTIST: AMJ DATE: 05/17/21  
SHEET: 1 OF 6



THIS IS AN ORIGINAL UNPUBLISHED DRAWING CREATED FOR YOUR PERSONAL USE IN CONNECTION WITH A PROJECT. IT IS NOT TO BE REPRODUCED, COPIED OR ENGRAVED IN ANY MANNER UNLESS AUTHORIZED IN WRITING BY AN OFFICER OF CUMMINS.

**ELEVATIONS**



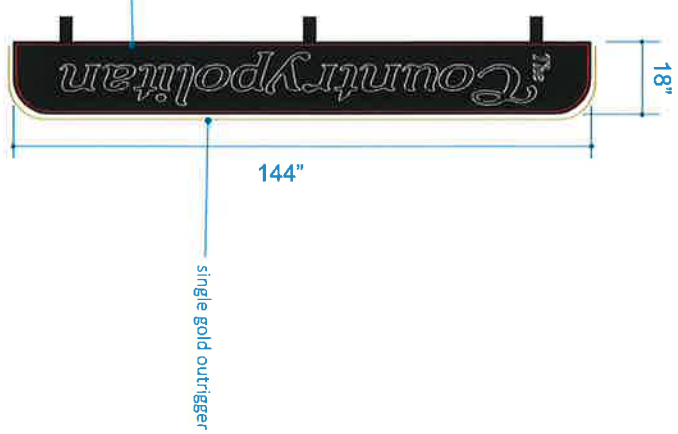
**B** open channel letters

open channel letter wall sign, with single stroke  
15mm tri-phosphor white argon tubing classic gold  
argon tubing (possible substitute clear red)

Fabrication, materials and delivery by  
The Neon Jungle. Installation & permitting  
by Cummings Signs including refurbish  
of existing awning.




red perimeter of face neon



**C** blade sign

double sided blade sign, (no channel letters)  
with single stroke 15mm tri-phosphor white argon  
tubing, possible contrasting outline on each side or  
small outrigger tube down center of return in either  
15mm classic gold argon or clear red neon.

Fabrication, materials and delivery by  
The Neon Jungle. Installation & permitting  
by Cummings Signs including refurbish  
of existing awning.



THIS IS AN ORIGINAL UNPUBLISHED DRAWING CREATED FOR YOUR PERSONAL USE IN CONNECTION WITH A PROJECT. IT IS NOT TO BE REPRODUCED OR TRANSMITTED IN ANY FORM OR BY ANY MEANS, ELECTRONIC OR MECHANICAL, INCLUDING PHOTOCOPYING, RECORDING, OR BY ANY INFORMATION STORAGE AND RETRIEVAL SYSTEM, WITHOUT PERMISSION IN WRITING BY AN OFFICER OF CUMMINGS.

**CUSTOMER APPROVAL:**

DATE: \_\_\_\_\_

DATE: \_\_\_\_\_

Rev #1 11/29/21 AAJ

Rev #2 11/24/21 AAJ

Rev #3 12/06/21 AAJ

DATE 12/14/21 BY AAJ

DATE 12/29/21 BY AAJ

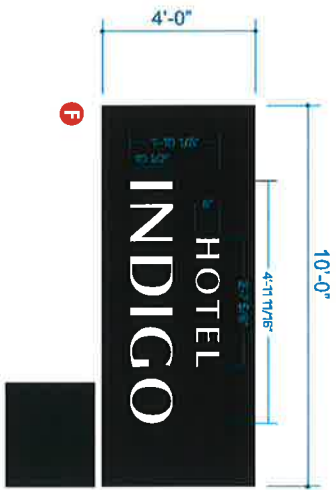
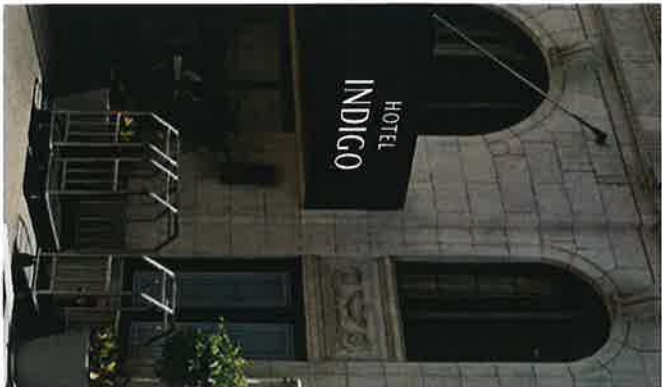
**301 UNION STREET**

**NASHVILLE, TN**

DRAWING NO: 106632.07

ARTIST: AAJ DATE: 05/17/21

SHEET: 2 OF 6



Face Construction:  
Routed aluminum with backer panel  
Paint: Pantone® 426 C gray/RAL3004, satin finish  
Backer Panel:  
118" white solar grade polycarbonate/4mm opal acrylic Plexiglas XT  
W4070

Face Construction:  
Routed aluminum with backer panel  
Paint: Pantone® 426 C gray/RAL3004, satin finish  
Backer Panel:  
118" white solar grade polycarbonate/4mm opal acrylic Plexiglas XT  
W4070



THIS IS AN ORIGINAL UNPUBLISHED DRAWING CREATED FOR YOUR PERSONAL USE IN CONNECTION WITH A PROJECT. IT IS NOT TO BE REPRODUCED, COPIED, OR DISTRIBUTED IN ANY MANNER WITHOUT THE WRITTEN PERMISSION OF CUMMINS.

CUSTOMER APPROVAL:  
DATE: \_\_\_\_\_

Rev. #1 11/23/21 AMJ  
Rev. #2 11/24/21 AMJ  
Rev. #3 12/06/21 AMJ

Rev. #4 12/14/21 AMJ  
Rev. #5 12/28/21 AMJ

301 UNION STREET  
NASHVILLE, TN

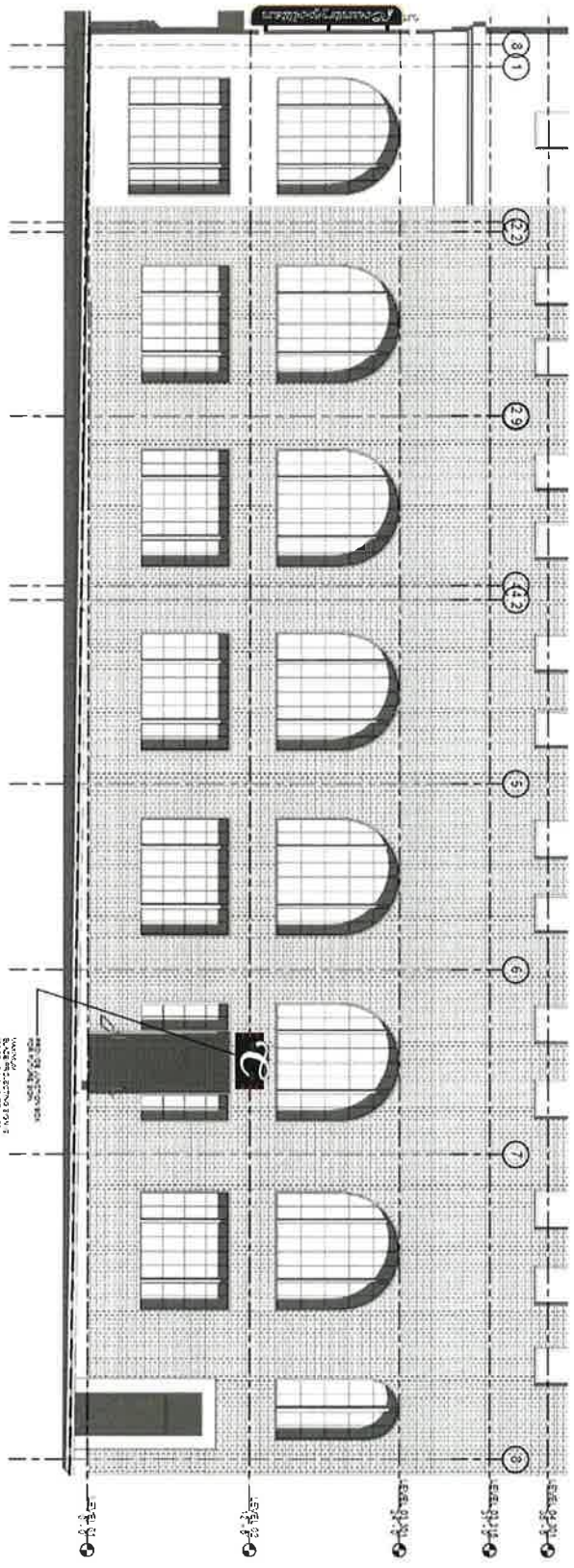
DRAWING NO:  
106632.07  
ARTIST: AMJ DATE: 05/17/21  
SHEET: 3 OF 6

**ELEVATIONS**

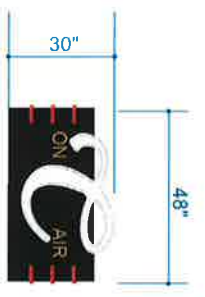


 <p><b>CUMMINS</b>  <small>MANUFACTURING DIVISION OF INTERNATIONAL HARVESTER COMPANY          CHICAGO, ILLINOIS 60648-1500</small></p>	<p>THIS IS AN ORIGINAL UNPUBLISHED DRAWING CREATED FOR YOUR PERSONAL USE IN CONNECTION WITH A PROFESSIONAL SERVICE PROVIDED BY CUMMINS. IT IS NOT TO BE REPRODUCED, COPIED OR BROADCAST IN ANY MANNER UNLESS AUTHORIZED IN WRITING BY AN OFFICER OF CUMMINS.</p>	<p>CUSTOMER APPROVAL:</p> <p>DATE _____</p>	<p>DATE BY</p> <p>Rev. #1 11/23/21 AMU</p> <p>Rev. #2 11/24/21 AMU</p> <p>Rev. #3 12/06/21 AMU</p>	<p>DATE BY</p> <p>Rev. #4 12/14/21 AMU</p> <p>Rev. #5 12/22/21 AMU</p> <p>Rev. #6 _____</p>	<p><b>301 UNION STREET          NASHVILLE, TN</b></p>	<p>DRAWING NO:  <b>106632.07</b></p> <p>ARTIST: AMU DATE: 05/17/21</p> <p>SHEET: 4 OF 6</p>
--	--	---	--	---	---	---






PRINTERS ALLEY MAXIMUM SIGN AREA - 222 SF



- 1 one wall sign (BY OTHERS) with 3 color neon/argon single stroke lettering over painted aluminum cans in traditional "half-bullnose" 1930's-40's style. Colors TBD, for paint and illuminated tubing.
- Fabrication, materials and delivery by The Neon Jungle. Installation & permitting by Cummings Signs



**CUMMINGS**

THIS IS AN ORIGINAL, UNPUBLISHED DRAWING CREATED FOR YOUR PERSONAL USE IN CONNECTION WITH A TRADE SHOW REQUESTED BY CUMMINGS. IT IS NOT TO BE REPRODUCED, COPIED OR EXHIBITED IN ANY MANNER UNLESS AUTHORIZED IN WRITING BY AN OFFICER OF CUMMINGS.

CUSTOMER APPROVAL: \_\_\_\_\_

DATE: \_\_\_\_\_

Rev. #1	11/23/21	AAA	AAA
Rev. #2	11/24/21	AAA	AAA
Rev. #3	12/06/21	AAA	AAA

Rev. #4	12/14/21	AAA	AAA
Rev. #5	12/22/21	AAA	AAA
Rev. #6			

**301 UNION STREET**

**NASHVILLE, TN**

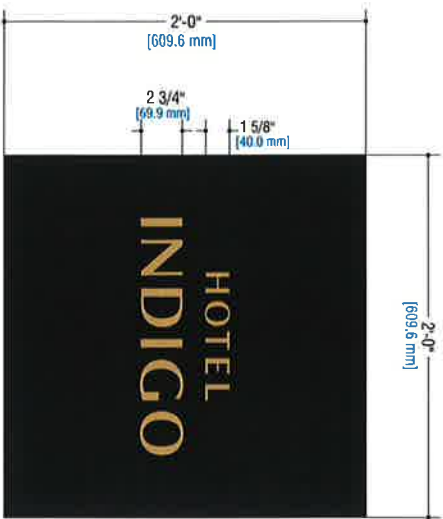
DRAWING NO:

**106632.07**

ARTIST: AAA

SHEET: 5 OF 6

DATE: 05/17/21



**P** PLAQUE - QTY 2

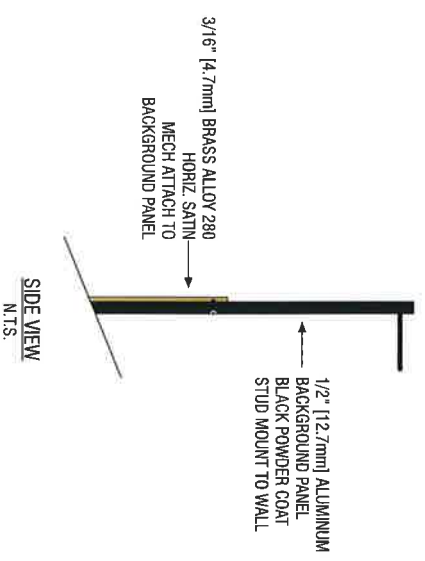
Scale: 1 1/2" = 1' - 0"

**GENERAL SPECIFICATIONS**

- BACKGROUND PANEL
- 1/2" [12.7mm] THICK FLAT CUT OUT ALUMINUM PANEL, PAINTED BLACK
- STUD MOUNT PER WALL CONDITIONS

**COPY**


- 3/16" [4.7mm] THICK FLAT CUT OUT BRASS ALLOY 280
- FACES HORIZONTAL SATIN FINISH
- EDGES WHITE FINISH
- LETTERS TO HAVE PROTECTIVE CLEARCOAT
- MECHANICALLY ATTACHED TO BACK PANEL



**SIDE VIEW**  
N.T.S.

**Color Schedule**

- Background Panel  SAC Black Powder Coat
- Copy / Arrows  Brass Alloy 280 CLEARCOAT



**CUMMINGS**

CUMMINGS INDUSTRIES, INC. INCLUDING INVENTOR AND  
DESIGNER OF TRADEMARKS AND PATENTS

THIS IS AN ORIGINAL UNPUBLISHED DRAWING CREATED FOR YOUR PERSONAL USE IN CONNECTION WITH A PROJECT PLANNED FOR YOU BY CUMMINGS. IT IS NOT TO BE REPRODUCED OR TRANSMITTED IN ANY FORM OR BY ANY MEANS, ELECTRONIC OR MECHANICAL, INCLUDING PHOTOCOPYING, RECORDING, OR BY ANY INFORMATION STORAGE AND RETRIEVAL SYSTEM, WITHOUT THE WRITTEN PERMISSION OF CUMMINGS.

<p>CUSTOMER APPROVAL:</p> <p>DATE: _____</p>	<p>DATE</p> <p>BY</p>	<p>DATE</p> <p>BY</p>	<p><b>301 UNION STREET</b></p> <p><b>NASHVILLE, TN</b></p>
<p>Rev. #1 11/23/21 AAAJ</p> <p>Rev. #2 11/24/21 AAAJ</p> <p>Rev. #3 12/06/21 AAAJ</p>	<p>Rev. #4 12/14/21 AAAJ</p> <p>Rev. #5 12/22/21 AAAJ</p>		<p><b>DRAWING NO:</b></p> <p><b>106632.07</b></p> <p><b>ARTIST: AAAJ</b></p> <p><b>SHEET: 6 OF 6</b></p> <p style="font-size: 6px;">DATE: 09/17/21</p>