



**METROPOLITAN GOVERNMENT OF NASHVILLE  
AND DAVIDSON COUNTY**  
Metro Office Building  
800 President Ronald Reagan Way  
P.O. Box 196300  
Nashville, TN 37219-6300

July 26, 2023

To: Mike Atchison Metro Water Services

**Re: PERCY COVE DEVELOPMENT (OFFSITE)  
Planning Commission Mandatory Referral 2023M-119ES-001  
Council District #33 Antoinette Lee, Council Member**

On behalf of the Metropolitan Planning Commission, the following item, referred to the Commission as required by the Metro Charter, has been recommended for *approval* to the Metropolitan Council:

*A request for the acceptance of 806 linear feet of 8-inch water main (DIP), approximately 840 linear feet of 8-inch sewer line (PVC), 4 sanitary sewer manholes, and associated easements to serve the Percy Cove offsite development.*

The relevant Metro agencies (Metro Parks, Metro Public Works, Metro Water Services, Metro Emergency Communications, the Nashville Electric Service, Metro Finance – Public Property and the Metro Historical Commission) have reviewed the proposal and concur in the recommendation for approval. This request must be approved by the Metro Council to become effective. A sketch showing the location of the request is attached to this letter.

**Conditions that apply to this approval: none**

This recommendation for approval is given as set forth in the Metropolitan Planning Commission Rules and Procedures. If you have any questions about this matter, please contact Delilah Rhodes at [delilah.rhodes@nashville.gov](mailto:delilah.rhodes@nashville.gov) or 615-862-7208.

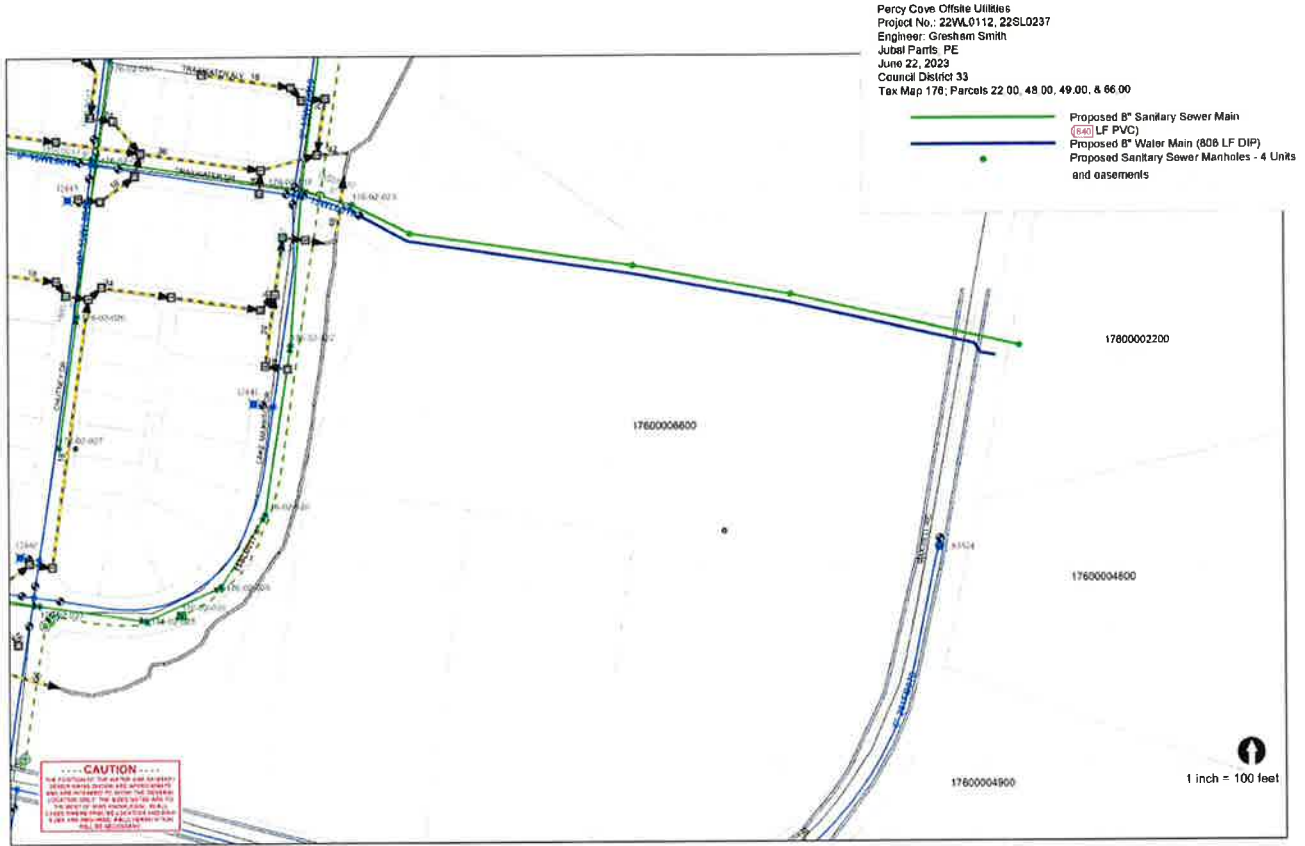
Sincerely,

A handwritten signature in blue ink that reads 'Lisa Milligan'.




Lisa Milligan  
Land Development Manager  
Metro Planning Department  
cc: Metro Clerk

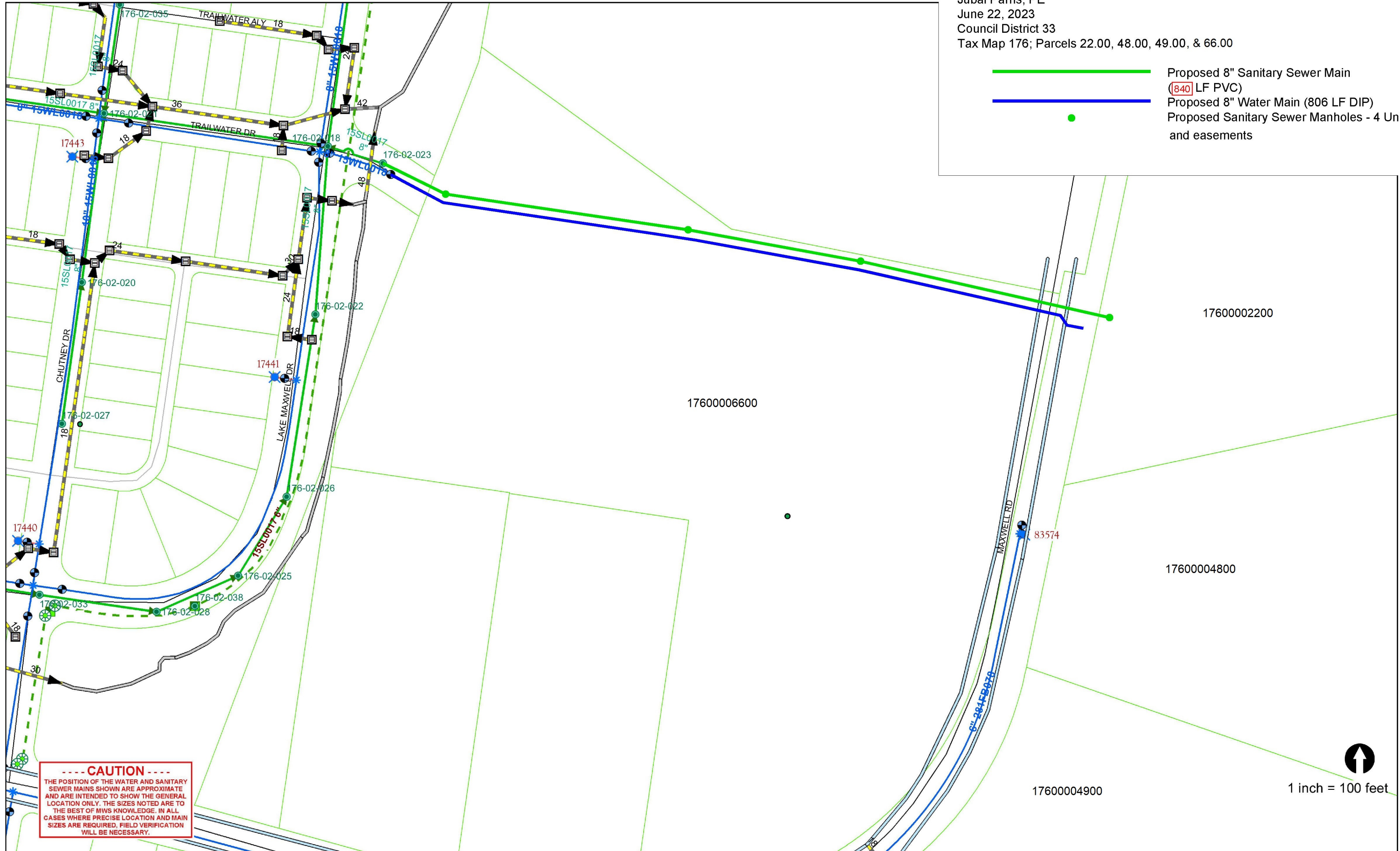
**Re: PERCY COVE DEVELOPMENT (OFFSITE)**  
**Planning Commission Mandatory Referral # 2023M-119ES-001**  
**Council District #33 Antoinette Lee, Council Member**

*A request for the acceptance of 806 linear feet of 8-inch water main (DIP), approximately 840 linear feet of 8-inch sewer line (PVC), 4 sanitary sewer manholes, and associated easements to serve the Percy Cove offsite development.*



Percy Cove Offsite Utilities  
Project No.: 22WL0112, 22SL0237  
Engineer: Gresham Smith  
Jubal Parris, PE  
June 22, 2023  
Council District 33  
Tax Map 176; Parcels 22.00, 48.00, 49.00, & 66.00

-  Proposed 8" Sanitary Sewer Main (840) LF PVC
-  Proposed 8" Water Main (806 LF DIP)
-  Proposed Sanitary Sewer Manholes - 4 Units and easements



**CAUTION**

THE POSITION OF THE WATER AND SANITARY SEWER MAINS SHOWN ARE APPROXIMATE AND ARE INTENDED TO SHOW THE GENERAL LOCATION ONLY. THE SIZES NOTED ARE TO THE BEST OF MWS KNOWLEDGE. IN ALL CASES WHERE PRECISE LOCATION AND MAIN SIZES ARE REQUIRED, FIELD VERIFICATION WILL BE NECESSARY.



1 inch = 100 feet