



March 20, 2024

To: Mike Atchison Metro Water Services

**Re: Peabody Union Sewer, Revision 2 (Amendment)
Planning Commission Mandatory Referral 2023M-208ES-003
Council District #19 Jacob Kupin, Council Member**

On behalf of the Metropolitan Planning Commission, the following item, referred to the Commission as required by the Metro Charter, has been recommended for *approval* to the Metropolitan Council:

A request to revise Proposal No. 2023M-208ES-002 to accept additional new sanitary sewer manholes, no existing manholes are to be abandoned, fewer existing manholes are to rehabilitated/lined, fewer linear feet of new 12-inch sanitary sewer main will be accepted, fewer linear feet of existing 8-inch sanitary sewer main will be abandoned, and there will be no change in the linear feet of existing 8-inch sanitary sewer main that will be lowered. Specific infrastructure instead now will be the abandonment of 222 linear feet of existing eight-inch sanitary sewer main, the lowering of approximately 116 linear feet of existing eight-inch sanitary sewer main, and the acceptance of 709 linear feet of new 12-inch sanitary sewer main, six new sanitary sewer manholes, and the lining of two existing sanitary sewer manholes to serve the Peabody Union development.

The relevant Metro agencies (Metro Parks, Nashville Department of Transportation, Metro Water Services, Metro Emergency Communications, the Nashville Electric Service, Metro Finance – Public Property and the Metro Historical Commission) have reviewed the proposal and concur in the recommendation for approval. This request must be approved by the Metro Council to become effective. A sketch showing the location of the request is attached to this letter.

Conditions that apply to this approval: none

This recommendation for approval is given as set forth in the Metropolitan Planning Commission Rules and Procedures. If you have any questions about this matter, please contact Delilah Rhodes at Delilah.Rhodes@nashville.gov or 615-862-7208

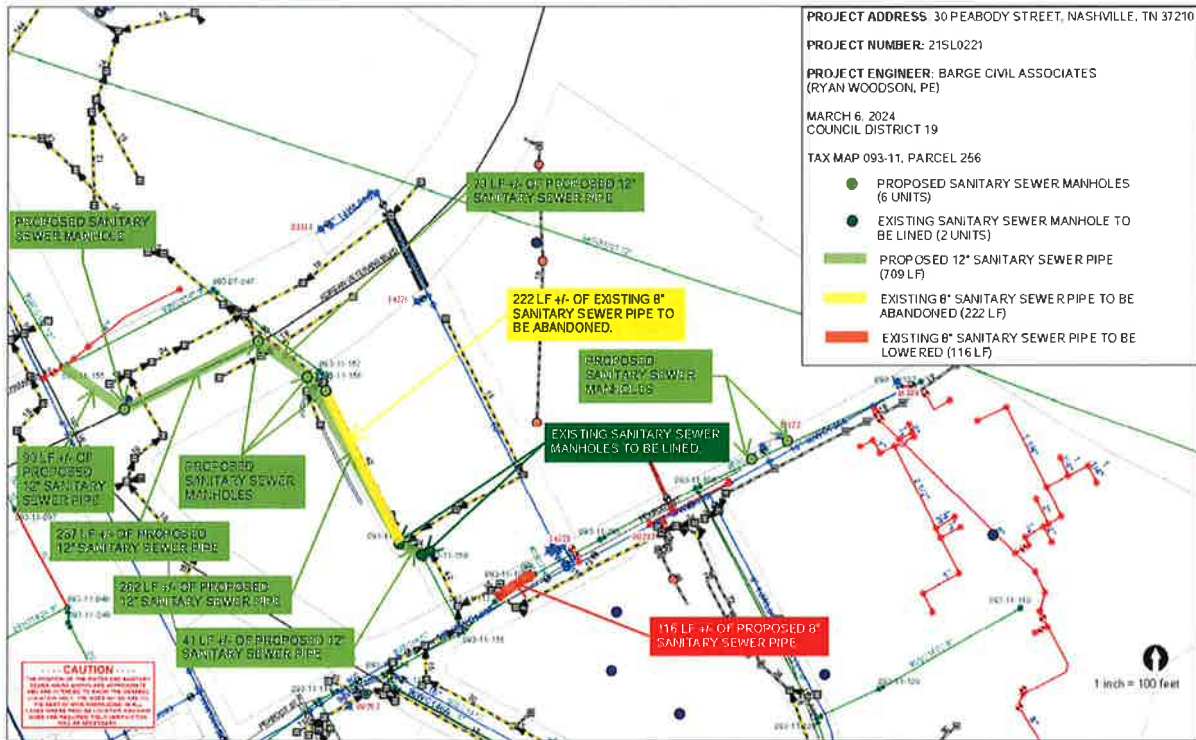
Sincerely,

A handwritten signature in blue ink that reads "Lisa Milligan".

Lisa Milligan
Assistant Director Land Development
Metro Planning Department
cc: Metro Clerk

Re: Peabody Union Sewer, Revision 2 (Amendment)
Planning Commission Mandatory Referral 2023M-208ES-003
Council District #19 Jacob Kupin, Council Member

A request to revise Proposal No. 2023M-208ES-002 to accept additional new sanitary sewer manholes, no existing manholes are to be abandoned, fewer existing manholes are to rehabilitated/lined, fewer linear feet of new 12-inch sanitary sewer main will be accepted, fewer linear feet of existing 8-inch sanitary sewer main will be abandoned, and there will be no change in the linear feet of existing 8-inch sanitary sewer main that will be lowered. Specific infrastructure instead now will be the abandonment of 222 linear feet of existing eight-inch sanitary sewer main, the lowering of approximately 116 linear feet of existing eight-inch sanitary sewer main, and the acceptance of 709 linear feet of new 12-inch sanitary sewer main, six new sanitary sewer manholes, and the lining of two existing sanitary sewer manholes to serve the Peabody Union development.



PROJECT ADDRESS: 30 PEABODY STREET, NASHVILLE, TN 37210

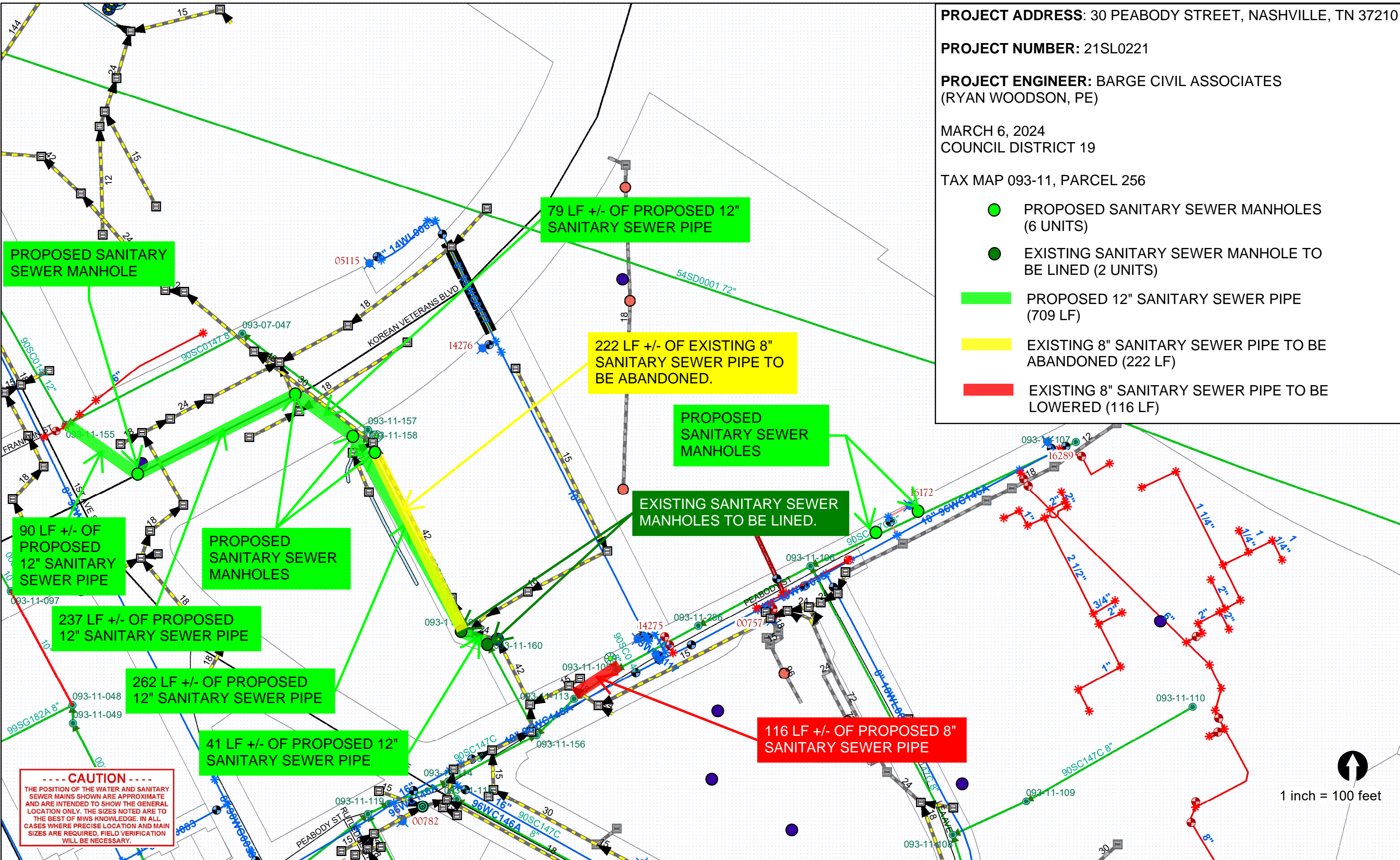
PROJECT NUMBER: 21SL0221

PROJECT ENGINEER: BARGE CIVIL ASSOCIATES
(RYAN WOODSON, PE)

MARCH 6, 2024
COUNCIL DISTRICT 19

TAX MAP 093-11, PARCEL 256

- PROPOSED SANITARY SEWER MANHOLES (6 UNITS)
- EXISTING SANITARY SEWER MANHOLE TO BE LINED (2 UNITS)
- PROPOSED 12" SANITARY SEWER PIPE (709 LF)
- EXISTING 8" SANITARY SEWER PIPE TO BE ABANDONED (222 LF)
- EXISTING 8" SANITARY SEWER PIPE TO BE LOWERED (116 LF)



PROPOSED SANITARY SEWER MANHOLE

79 LF +/- OF PROPOSED 12" SANITARY SEWER PIPE

222 LF +/- OF EXISTING 8" SANITARY SEWER PIPE TO BE ABANDONED.

PROPOSED SANITARY SEWER MANHOLES

EXISTING SANITARY SEWER MANHOLES TO BE LINED.

90 LF +/- OF PROPOSED 12" SANITARY SEWER PIPE

PROPOSED SANITARY SEWER MANHOLES

237 LF +/- OF PROPOSED 12" SANITARY SEWER PIPE

262 LF +/- OF PROPOSED 12" SANITARY SEWER PIPE

41 LF +/- OF PROPOSED 12" SANITARY SEWER PIPE

116 LF +/- OF PROPOSED 8" SANITARY SEWER PIPE

----- CAUTION -----
THE POSITION OF THE WATER AND SANITARY SEWER MAINS SHOWN ARE APPROXIMATE AND ARE INTENDED TO SHOW THE GENERAL LOCATION ONLY. THE SIZES NOTED ARE TO THE BEST OF MWS KNOWLEDGE. IN ALL CASES WHERE PRECISE LOCATION AND MAIN SIZES ARE REQUIRED, FIELD VERIFICATION WILL BE NECESSARY.

1 inch = 100 feet