



**METROPOLITAN GOVERNMENT OF NASHVILLE
AND DAVIDSON COUNTY**

Metro Office Building
800 President Ronald Reagan Way
P.O. Box 196300
Nashville, TN 37219-6300

January 12, 2023

To: Mike Atchison Metro Water Services

**Re: CHARTWELL AT MARATHON VILLAGE (AMENDMENT)
Planning Commission Mandatory Referral # 2022M-187ES-001
Council District #19 Freddie O'Connell, Council Member**

On behalf of the Metropolitan Planning Commission, the following item, referred to the Commission as required by the Metro Charter, has been recommended for *approval* to the Metropolitan Council:

A request to amend Council BL2022-1082 and Proposal No. 2022M-004ES-001 for the acceptance of approximately 203 linear feet of 18-inch sanitary sewer main, one sanitary sewer manhole, and 90 linear feet less of eight-inch water main than before to serve the Chartwell at Marathon Village development.

The relevant Metro agencies (Metro Parks, Metro Public Works, Metro Water Services, Metro Emergency Communications, the Nashville Electric Service, Metro Finance – Public Property and the Metro Historical Commission) have reviewed the proposal and concur in the recommendation for approval. This request must be approved by the Metro Council to become effective. A sketch showing the location of the request is attached to this letter.

Conditions that apply to this approval: none

This recommendation for approval is given as set forth in the Metropolitan Planning Commission Rules and Procedures. If you have any questions about this matter, please contact Delilah Rhodes at delilah.rhodes@nashville.gov or 615-862-7208.

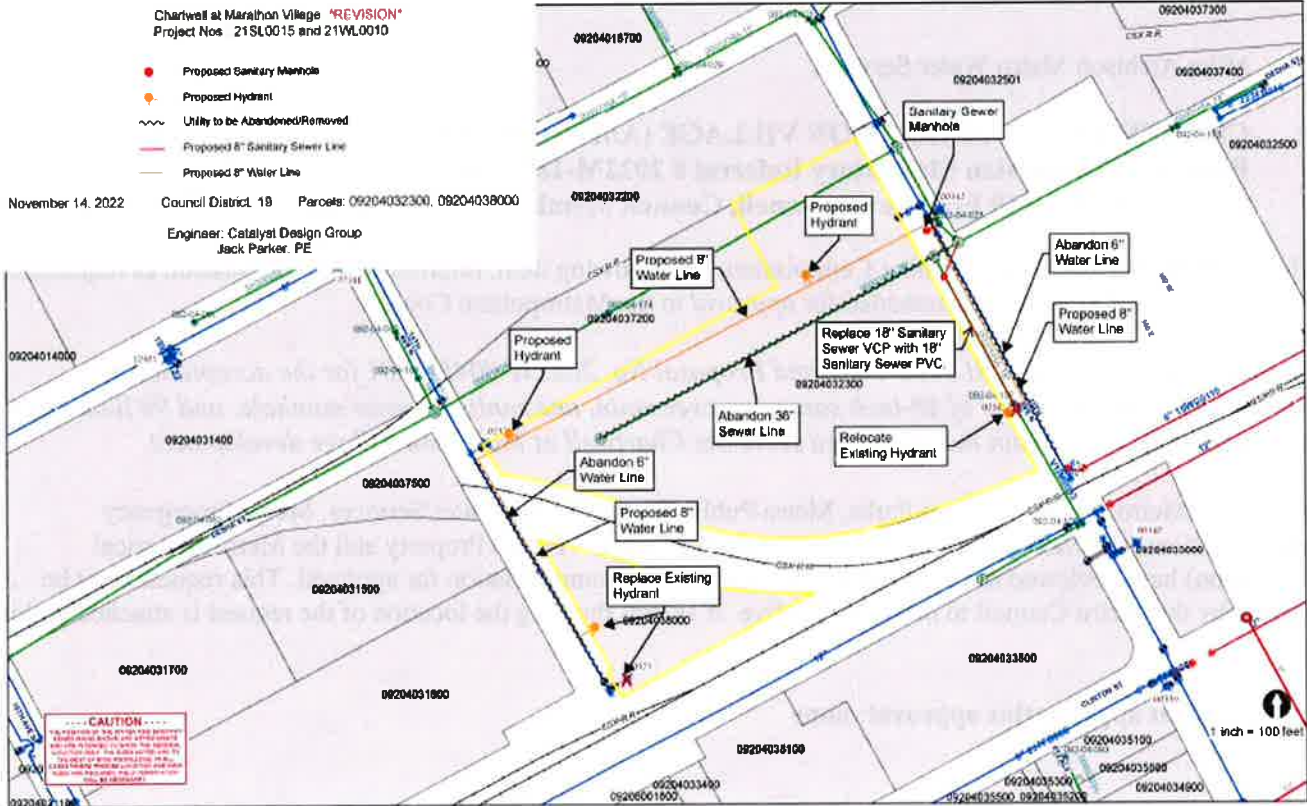
Sincerely,

A handwritten signature in blue ink that reads "Lisa Milligan".

Lisa Milligan
Land Development Manager
Metro Planning Department
cc: Metro Clerk

Re: CHARTWELL AT MARATHON VILLAGE (AMENDMENT)
Planning Commission Mandatory Referral # 2022M-187ES-001
Council District #19 Freddie O'Connell, Council Member

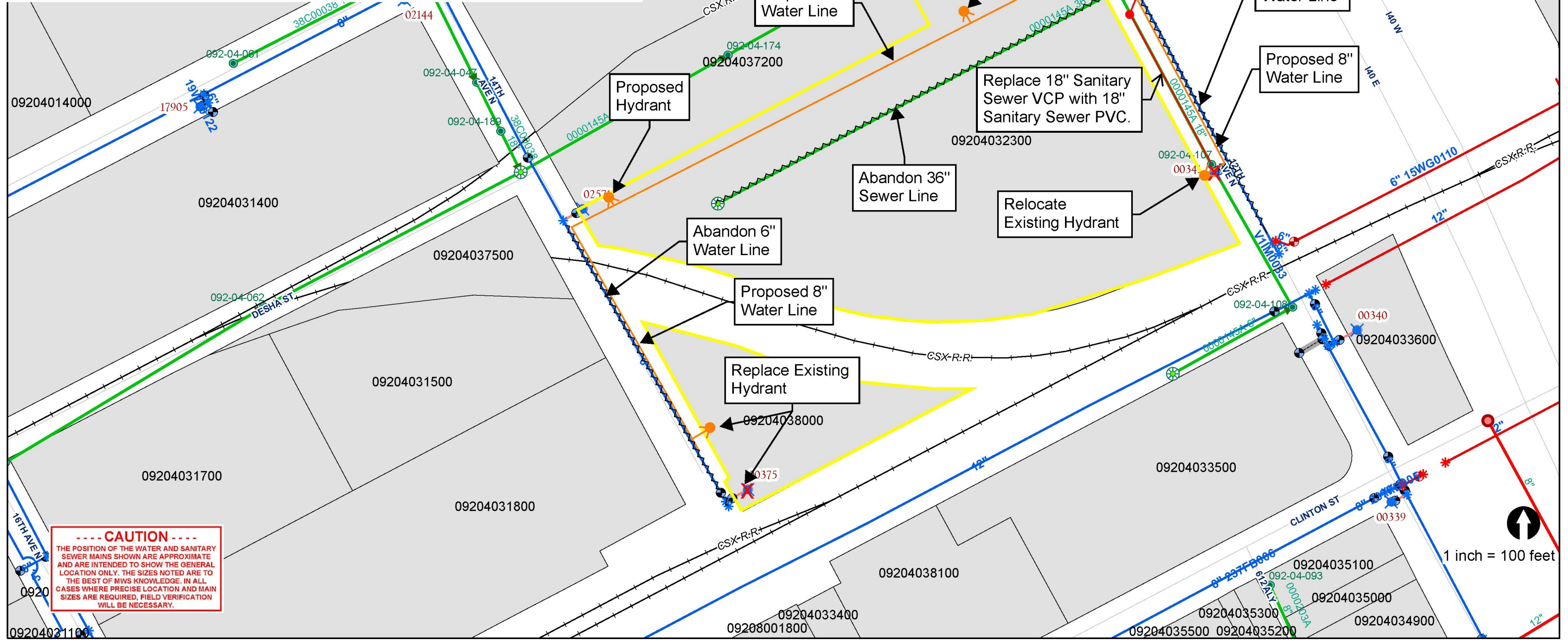
A request to amend Council BL2022-1082 and Proposal No. 2022M-004ES-001 for the acceptance of approximately 203 linear feet of 18-inch sanitary sewer main, one sanitary sewer manhole, and 90 linear feet less of eight-inch water main than before to serve the Chartwell at Marathon Village development.



Chartwell at Marathon Village *REVISION*
Project Nos.: 21SL0015 and 21WL0010

- Proposed Sanitary Manhole
- Proposed Hydrant
- Utility to be Abandoned/Removed
- Proposed 8" Sanitary Sewer Line
- Proposed 8" Water Line (and easements)

November 14, 2022 Council District: 19 Parcels: 09204032300, 09204038000
 Engineer: Catalyst Design Group
 Jack Parker, PE



----- CAUTION -----
 THE POSITION OF THE WATER AND SANITARY SEWER MAINS SHOWN ARE APPROXIMATE AND ARE INTENDED TO SHOW THE GENERAL LOCATION ONLY. THE SIZES NOTED ARE TO THE BEST OF MWS KNOWLEDGE. IN ALL CASES WHERE PRECISE LOCATION AND MAIN SIZES ARE REQUIRED, FIELD VERIFICATION WILL BE NECESSARY.