

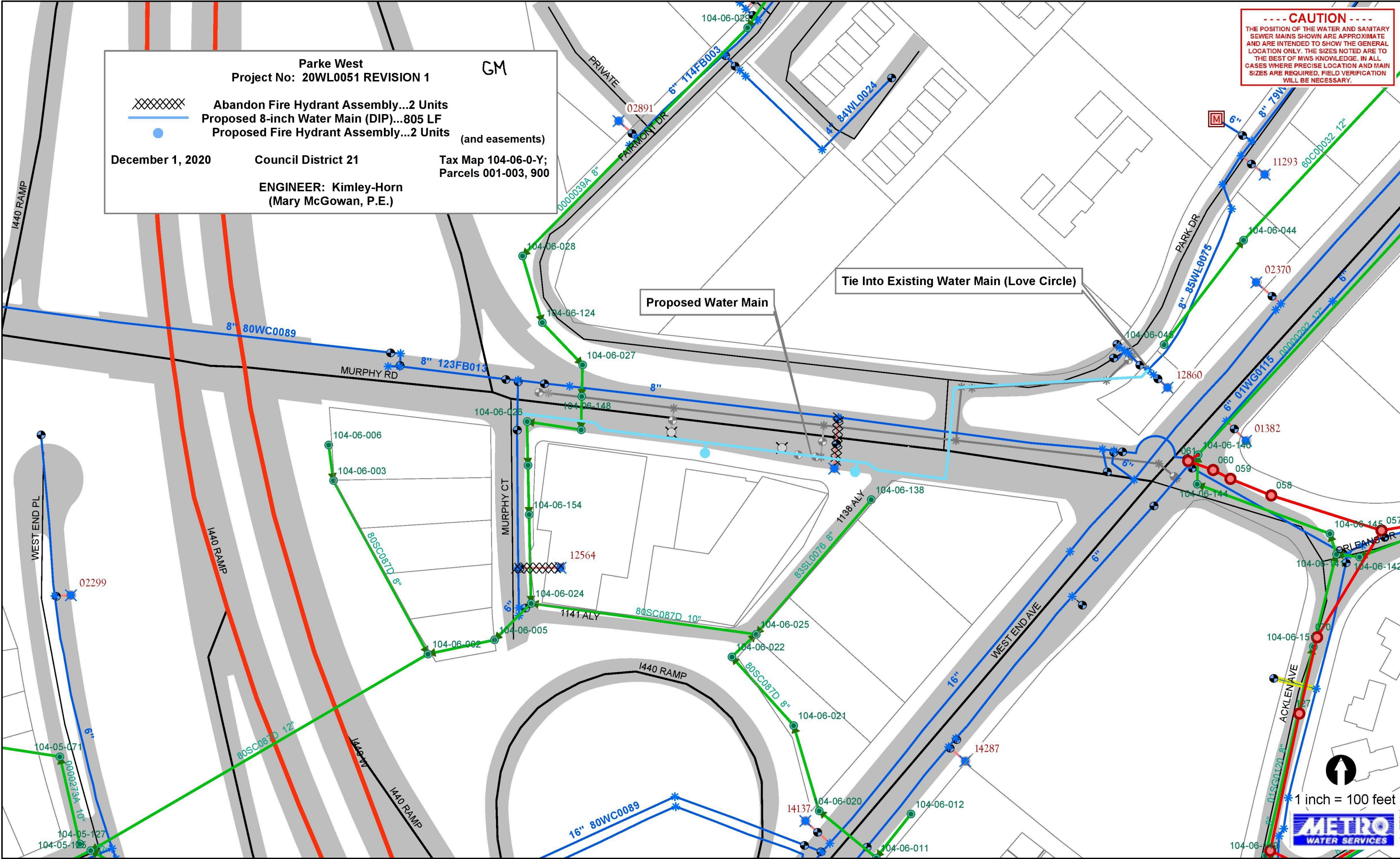
-----CAUTION-----
 THE POSITION OF THE WATER AND SANITARY SEWER MAINS SHOWN ARE APPROXIMATE AND ARE INTENDED TO SHOW THE GENERAL LOCATION ONLY. THE SIZES NOTED ARE TO THE BEST OF MWS KNOWLEDGE. IN ALL CASES WHERE PRECISE LOCATION AND MAIN SIZES ARE REQUIRED, FIELD VERIFICATION WILL BE NECESSARY.

Parke West
Project No: 20WL0051 REVISION 1 GM

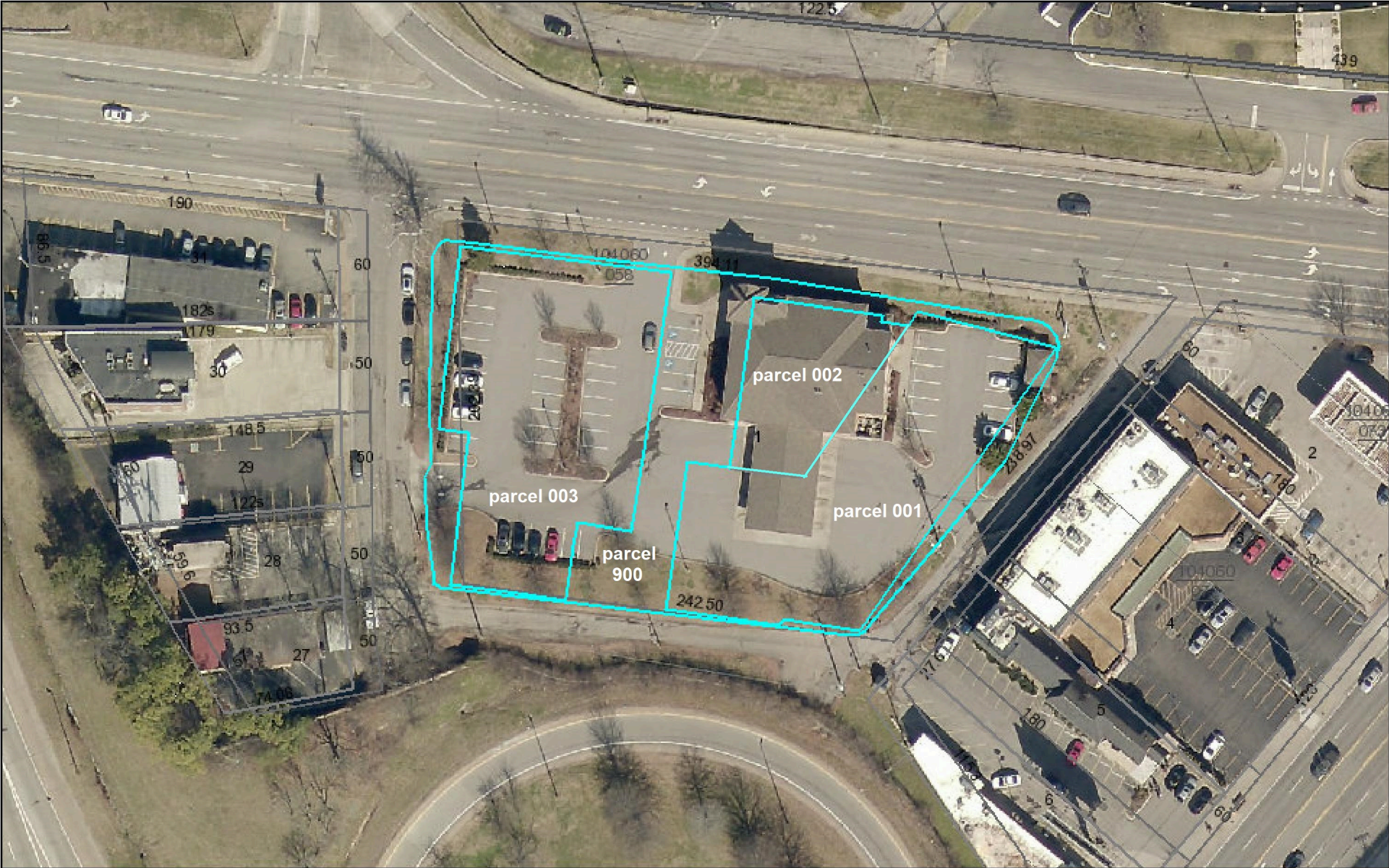
XXXXXXXX
 Abandon Fire Hydrant Assembly...2 Units
 Proposed 8-inch Water Main (DIP)...805 LF
 Proposed Fire Hydrant Assembly...2 Units (and easements)

December 1, 2020 Council District 21 Tax Map 104-06-0-Y;
Parcels 001-003, 900

ENGINEER: Kimley-Horn
 (Mary McGowan, P.E.)

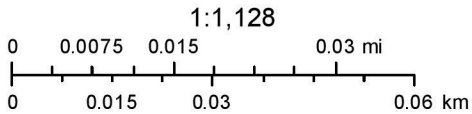


Nashville / Davidson County Parcel Viewer



December 2, 2020

Ownership Parcels



Metro GIS; Pictometry International

Made by: Metro GIS