



**METROPOLITAN GOVERNMENT
OF NASHVILLE AND DAVIDSON COUNTY**

Planning Department
Metro Office Building
800 Second Avenue South
Nashville, Tennessee 37201

August 25, 2022

To: Edward Thurman, Metro Water Services

**Re: 1414 4th AVENUE MIXED USE DEVELOPMENT
Planning Commission Mandatory Referral #2022M-128ES-001
Council District #17 Colby Sledge, Council Member**

On behalf of the Metropolitan Planning Commission, the following item, referred to the Commission as required by the Metro Charter, has been recommended for *approval* to the Metropolitan Council:

A request for approval for the acceptance of two sanitary sewer manholes and one fire hydrant assembly to serve the 1414 4th Avenue Mixed Use development.

The relevant Metro agencies (Metro Parks, Metro Public Works, Metro Water Services, Metro Emergency Communications, the Nashville Electric Service, Metro Finance – Public Property and the Metro Historical Commission) have reviewed the proposal and concur in the recommendation for approval. This request must be approved by the Metro Council to become effective. A sketch showing the location of the request is attached to this letter.

Conditions that apply to this approval: none

This recommendation for approval is given as set forth in the Metropolitan Planning Commission Rules and Procedures. If you have any questions about this matter, please contact Delilah Rhodes at delilah.rhodes@nashville.gov or 615-862-7208.

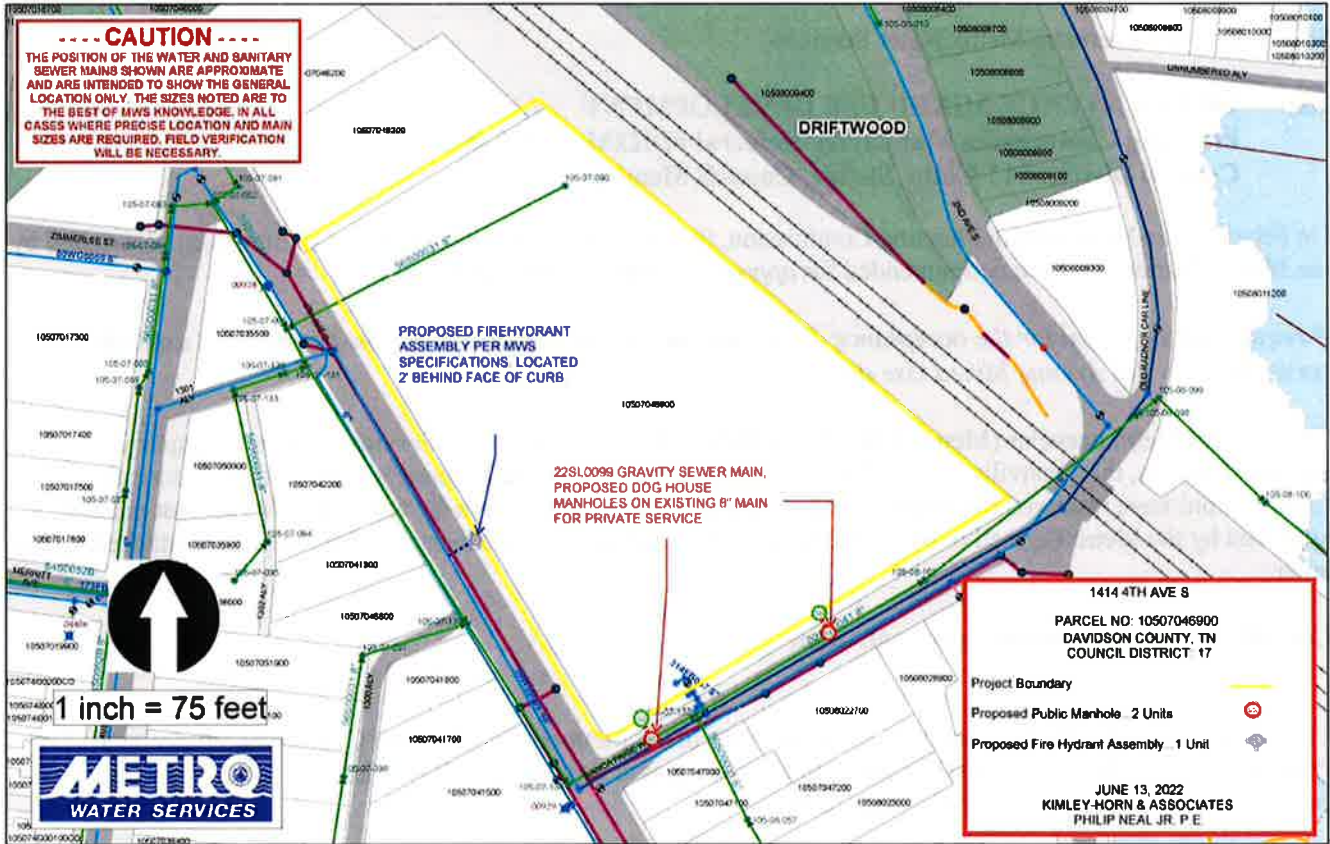
Sincerely,

A handwritten signature in blue ink, appearing to read "Lisa Milligan".

Lisa Milligan
Land Development Manager
Metro Planning Department
cc: *Metro Clerk*

Re: 1414 4th AVENUE MIXED USE DEVELOPMENT
Planning Commission Mandatory Referral #2022M-128ES-001
Council District #17 Colby Sledge, Council Member

A request for approval for the acceptance of two sanitary sewer manholes and one fire hydrant assembly to serve the 1414 4th Avenue Mixed Use development.






----- CAUTION -----
THE POSITION OF THE WATER AND SANITARY SEWER MAINS SHOWN ARE APPROXIMATE AND ARE INTENDED TO SHOW THE GENERAL LOCATION ONLY. THE SIZES NOTED ARE TO THE BEST OF MWS KNOWLEDGE. IN ALL CASES WHERE PRECISE LOCATION AND MAIN SIZES ARE REQUIRED, FIELD VERIFICATION WILL BE NECESSARY.

DRIFTWOOD

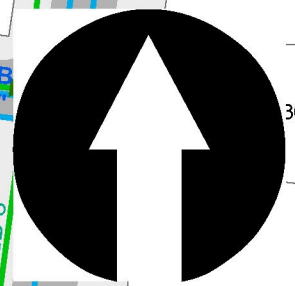
PROPOSED FIREHYDRANT ASSEMBLY PER MWS SPECIFICATIONS. LOCATED 2' BEHIND FACE OF CURB.

22SL0099 GRAVITY SEWER MAIN, PROPOSED DOG HOUSE MANHOLES ON EXISTING 8" MAIN FOR PRIVATE SERVICE

1414 4TH AVE S
PARCEL NO: 10507046900
DAVIDSON COUNTY, TN
COUNCIL DISTRICT: 17

- Project Boundary 
- Proposed Public Manhole...2 Units 
- Proposed Fire Hydrant Assembly...1 Unit 

JUNE 13, 2022
KIMLEY-HORN & ASSOCIATES
PHILIP NEAL JR, P.E.



1 inch = 75 feet

