



**METROPOLITAN GOVERNMENT OF NASHVILLE  
AND DAVIDSON COUNTY**

Metro Office Building  
800 President Ronald Reagan Way  
P.O. Box 196300  
Nashville, TN 37219-6300

August 7, 2023

To: Mike Atchison Metro Water Services

**Re: HERITAGE CREEK PHASE 5  
Planning Commission Mandatory Referral 2023M-126ES-001  
Council District #03 Jennifer Gamble, Council Member**

On behalf of the Metropolitan Planning Commission, the following item, referred to the Commission as required by the Metro Charter, has been recommended for *approval* to the Metropolitan Council:

*A request for the acceptance of approximately 2,376 linear feet of 8-inch sanitary sewer main (PVC), 407 linear feet of 8-inch sanitary sewer main (DIP), 13 sanitary sewer manholes, and associated easements to serve the Heritage Creek Phase 5 development.*

The relevant Metro agencies (Metro Parks, Metro Public Works, Metro Water Services, Metro Emergency Communications, the Nashville Electric Service, Metro Finance – Public Property and the Metro Historical Commission) have reviewed the proposal and concur in the recommendation for approval. This request must be approved by the Metro Council to become effective. A sketch showing the location of the request is attached to this letter.

**Conditions that apply to this approval: none**

This recommendation for approval is given as set forth in the Metropolitan Planning Commission Rules and Procedures. If you have any questions about this matter, please contact Delilah Rhodes at [delilah.rhodes@nashville.gov](mailto:delilah.rhodes@nashville.gov) or 615-862-7208.

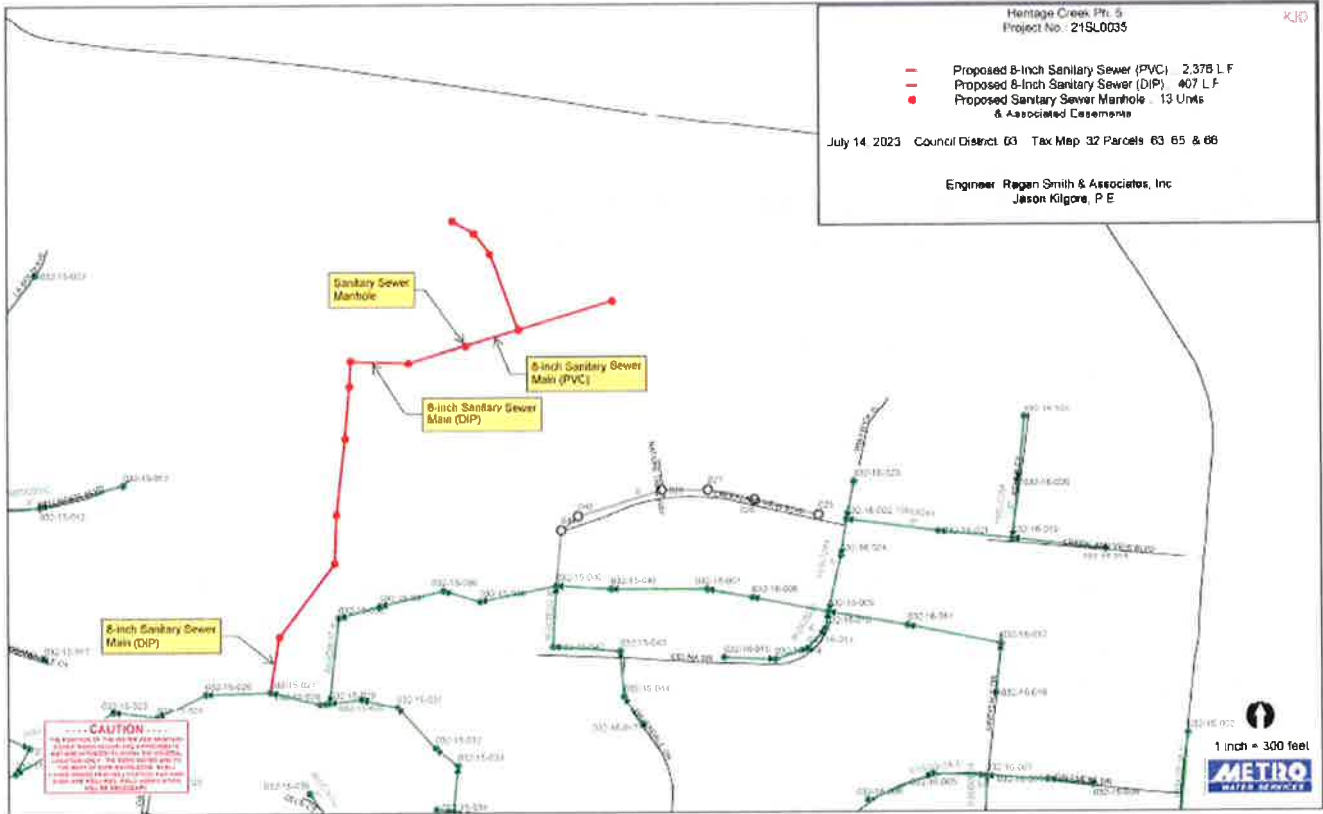
Sincerely,

A handwritten signature in blue ink that reads "Lisa Milligan".

Lisa Milligan  
Land Development Manager  
Metro Planning Department  
cc: *Metro Clerk*

**Re: HERITAGE CREEK PHASE 5  
Planning Commission Mandatory Referral # 2023M-126ES-001  
Council District #03 Jennifer Gamble, Council Member**

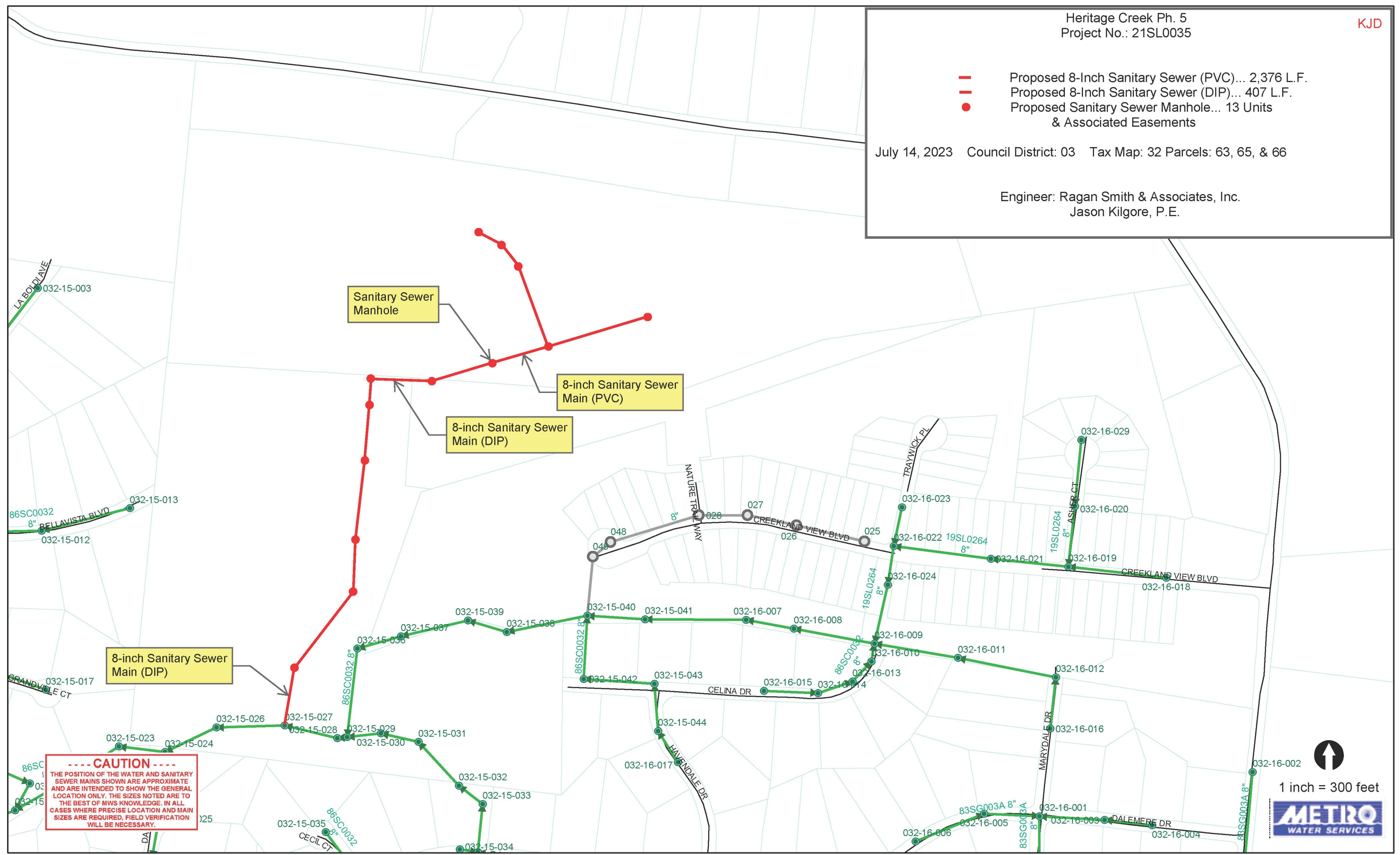
*A request for the acceptance of approximately 2,376 linear feet of 8-inch sanitary sewer main (PVC), 407 linear feet of 8-inch sanitary sewer main (DIP), 13 sanitary sewer manholes, and associated easements to serve the Heritage Creek Phase 5 development.*



- Proposed 8-Inch Sanitary Sewer (PVC)... 2,376 L.F.
- Proposed 8-Inch Sanitary Sewer (DIP)... 407 L.F.
- Proposed Sanitary Sewer Manhole... 13 Units & Associated Easements

July 14, 2023 Council District: 03 Tax Map: 32 Parcels: 63, 65, & 66

Engineer: Ragan Smith & Associates, Inc.  
Jason Kilgore, P.E.



**----- CAUTION -----**  
 THE POSITION OF THE WATER AND SANITARY SEWER MAINS SHOWN ARE APPROXIMATE AND ARE INTENDED TO SHOW THE GENERAL LOCATION ONLY. THE SIZES NOTED ARE TO THE BEST OF MWS KNOWLEDGE. IN ALL CASES WHERE PRECISE LOCATION AND MAIN SIZES ARE REQUIRED, FIELD VERIFICATION WILL BE NECESSARY.

1 inch = 300 feet