



**METROPOLITAN GOVERNMENT OF NASHVILLE
AND DAVIDSON COUNTY**

Metro Office Building
800 President Ronald Reagan Way
P.O. Box 196300
Nashville, TN 37219-6300

May 18, 2023

To: Mike Atchison Metro Water Services

Re: **HARLIN TOWNHOMES**
Planning Commission Mandatory Referral # 2023M-075ES-001
Council District #16 Ginny Welsch, Council Member

On behalf of the Metropolitan Planning Commission, the following item, referred to the Commission as required by the Metro Charter, has been recommended for *approval* to the Metropolitan Council:

A request for the relocation of one fire hydrant assembly to serve the Harlin Townhomes development.

The relevant Metro agencies (Metro Parks, Metro Public Works, Metro Water Services, Metro Emergency Communications, the Nashville Electric Service, Metro Finance – Public Property and the Metro Historical Commission) have reviewed the proposal and concur in the recommendation for approval. This request must be approved by the Metro Council to become effective. A sketch showing the location of the request is attached to this letter.

Conditions that apply to this approval: none

This recommendation for approval is given as set forth in the Metropolitan Planning Commission Rules and Procedures. If you have any questions about this matter, please contact Delilah Rhodes at delilah.rhodes@nashville.gov or 615-862-7208.

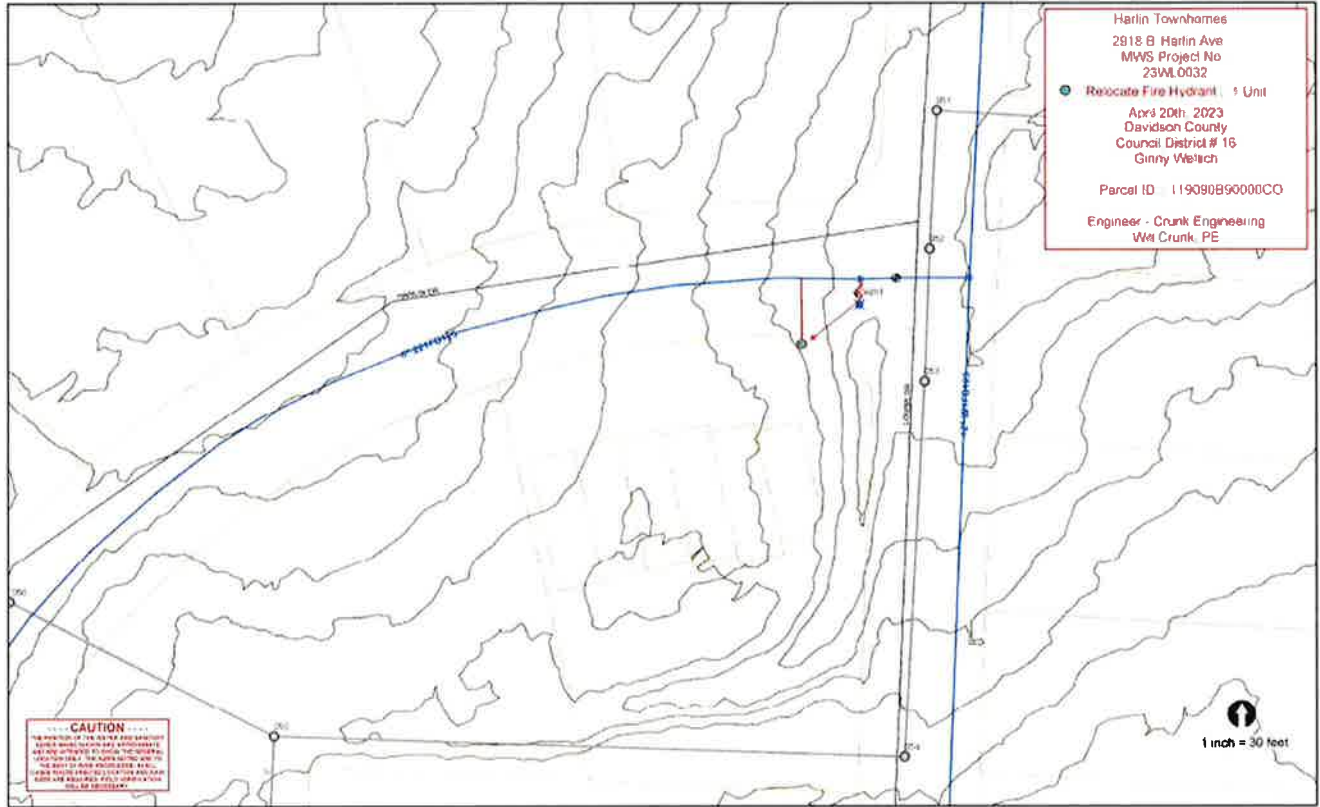
Sincerely,

A handwritten signature in blue ink that reads "Lisa Milligan".

Lisa Milligan
Land Development Manager
Metro Planning Department
cc: *Metro Clerk*

Re: HARLIN TOWNHOMES
Planning Commission Mandatory Referral # 2023M-075ES-001
Council District #16 Ginny Welsch, Council Member

A request for the relocation of one fire hydrant assembly to serve the Harlin Townhomes development.



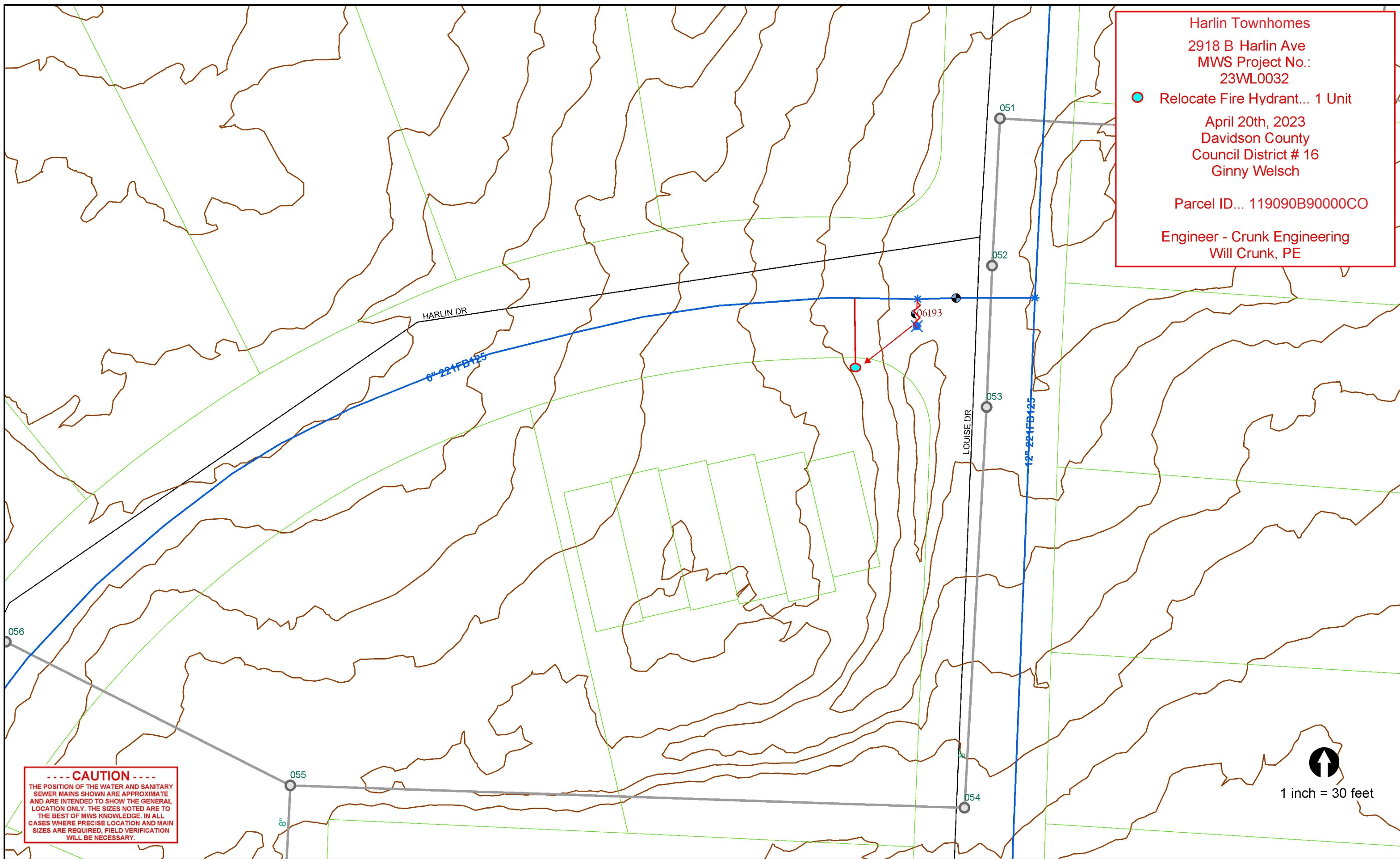
Harlin Townhomes
2918 B Harlin Ave
MWS Project No.:
23WL0032

● Relocate Fire Hydrant... 1 Unit

April 20th, 2023
Davidson County
Council District # 16
Ginny Welsch

Parcel ID... 119090B90000CO

Engineer - Crunk Engineering
Will Crunk, PE



----- CAUTION -----
THE POSITION OF THE WATER AND SANITARY
SEWER MAINS SHOWN ARE APPROXIMATE
AND ARE INTENDED TO SHOW THE GENERAL
LOCATION ONLY. THE SIZES NOTED ARE TO
THE BEST OF MWS KNOWLEDGE. IN ALL
CASES WHERE PRECISE LOCATION AND MAIN
SIZES ARE REQUIRED, FIELD VERIFICATION
WILL BE NECESSARY.

↑
1 inch = 30 feet