



**METROPOLITAN GOVERNMENT OF NASHVILLE
AND DAVIDSON COUNTY**

Metro Office Building
800 President Ronald Reagan Way
P.O. Box 196300
Nashville, TN 37219-6300

October 4, 2022

To: Stephanie James, Metro Water Services

**Re: 200 BROADWAY
Planning Commission Mandatory Referral #2022M-143ES-001
Council District #19 Freddie O'Connell, Council Member**

On behalf of the Metropolitan Planning Commission, the following item, referred to the Commission as required by the Metro Charter, has been recommended for *approval* to the Metropolitan Council:

A request for approval for the acceptance of one fire hydrant assembly to serve the restaurant development at 200 Broadway.

The relevant Metro agencies (Metro Parks, Metro Public Works, Metro Water Services, Metro Emergency Communications, the Nashville Electric Service, Metro Finance – Public Property and the Metro Historical Commission) have reviewed the proposal and concur in the recommendation for approval. This request must be approved by the Metro Council to become effective. A sketch showing the location of the request is attached to this letter.

Conditions that apply to this approval: none

This recommendation for approval is given as set forth in the Metropolitan Planning Commission Rules and Procedures. If you have any questions about this matter, please contact Delilah Rhodes at delilah.rhodes@nashville.gov or 615-862-7208.

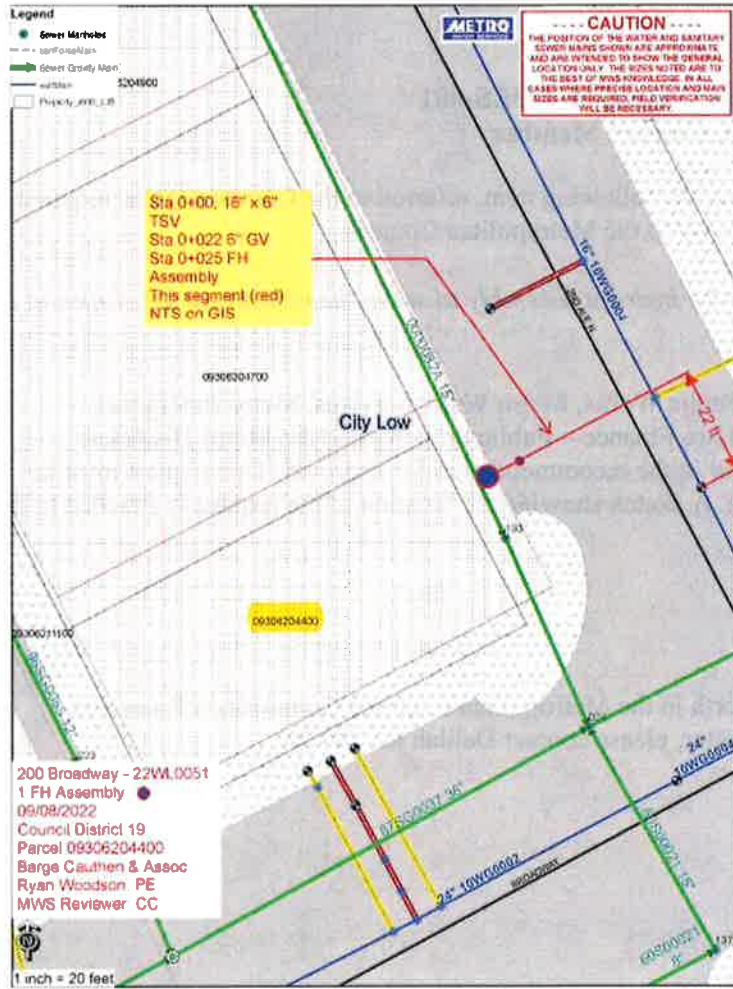
Sincerely,

A handwritten signature in blue ink, appearing to read "Lisa Milligan".

Lisa Milligan
Land Development Manager
Metro Planning Department
cc: *Metro Clerk*

Re: 200 BROADWAY
Planning Commission Mandatory Referral #2022M-143ES-001
Council District #19 Freddie O'Connell, Council Member

A request for approval for the acceptance of one fire hydrant assembly to serve the restaurant development at 200 Broadway.



Freddie O'Connell

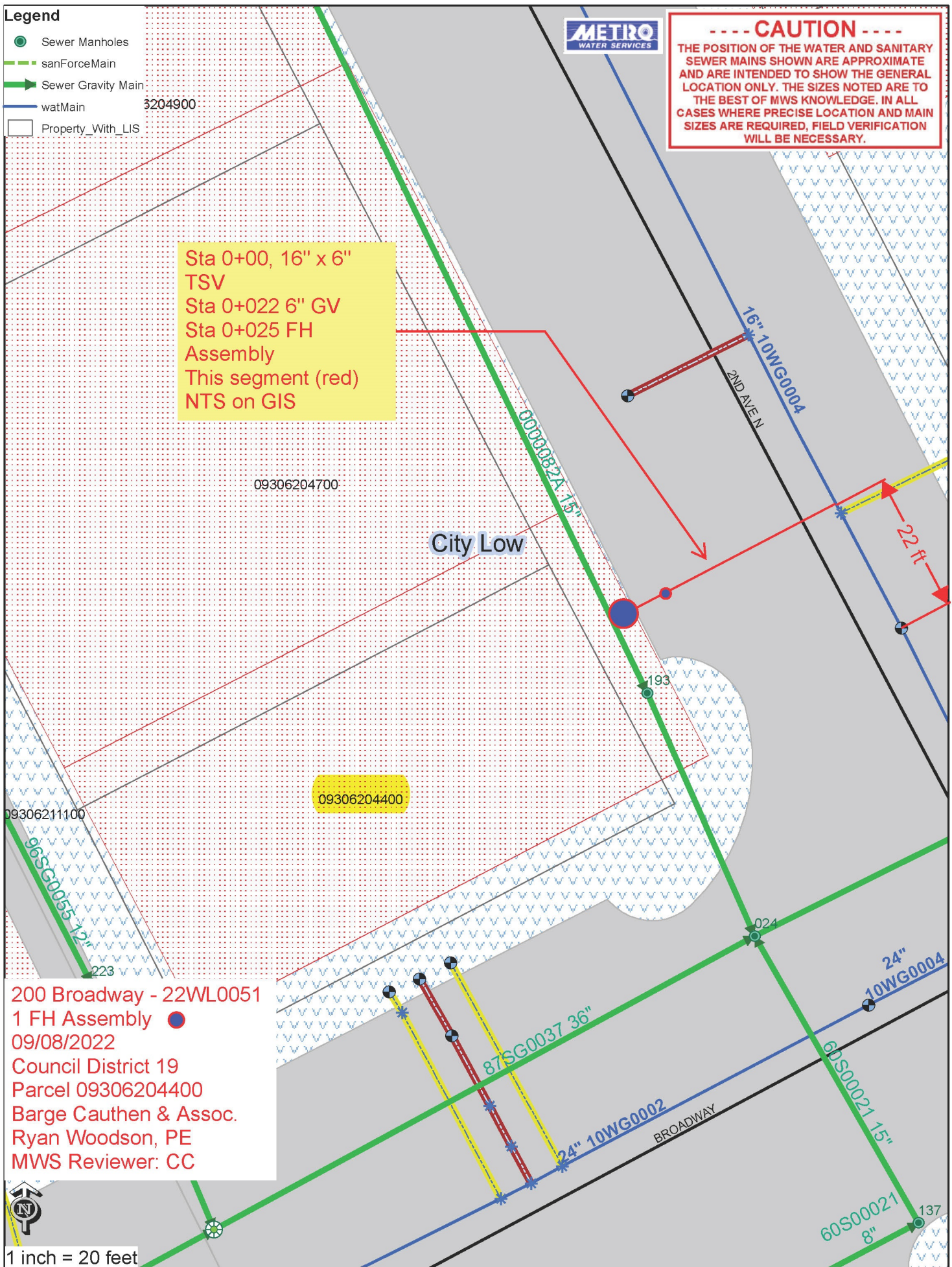


----- CAUTION -----
THE POSITION OF THE WATER AND SANITARY SEWER MAINS SHOWN ARE APPROXIMATE AND ARE INTENDED TO SHOW THE GENERAL LOCATION ONLY. THE SIZES NOTED ARE TO THE BEST OF MWS KNOWLEDGE. IN ALL CASES WHERE PRECISE LOCATION AND MAIN SIZES ARE REQUIRED, FIELD VERIFICATION WILL BE NECESSARY.

Legend

- Sewer Manholes
- sanForceMain
- Sewer Gravity Main
- watMain
- Property_With_LIS

Sta 0+00, 16" x 6" TSV
Sta 0+022 6" GV
Sta 0+025 FH Assembly
This segment (red)
NTS on GIS



200 Broadway - 22WL0051
1 FH Assembly ●
09/08/2022
Council District 19
Parcel 09306204400
Barge Cauthen & Assoc.
Ryan Woodson, PE
MWS Reviewer: CC



1 inch = 20 feet