



April 12, 2024

To: Mike Atchison Metro Water Services

Re: **1015 Tulip Grove Road**
Planning Commission Mandatory Referral 2024M-055ES-001
Council District #12 Erin Evans, Council Member

On behalf of the Metropolitan Planning Commission, the following item, referred to the Commission as required by the Metro Charter, has been recommended for *approval* to the Metropolitan Council:

A request for the acceptance of approximately 245 linear feet of eight-inch sanitary sewer main (PVC), three sanitary sewer manholes, and easement to serve the development at 1015 Tulip Grove Road.

The relevant Metro agencies (Metro Parks, Nashville Department of Transportation, Metro Water Services, Metro Emergency Communications, the Nashville Electric Service, Metro Finance – Public Property and the Metro Historical Commission) have reviewed the proposal and concur in the recommendation for approval. This request must be approved by the Metro Council to become effective. A sketch showing the location of the request is attached to this letter.

Conditions that apply to this approval: none

This recommendation for approval is given as set forth in the Metropolitan Planning Commission Rules and Procedures. If you have any questions about this matter, please contact Delilah Rhodes at Delilah.Rhodes@nashville.gov or 615-862-7208

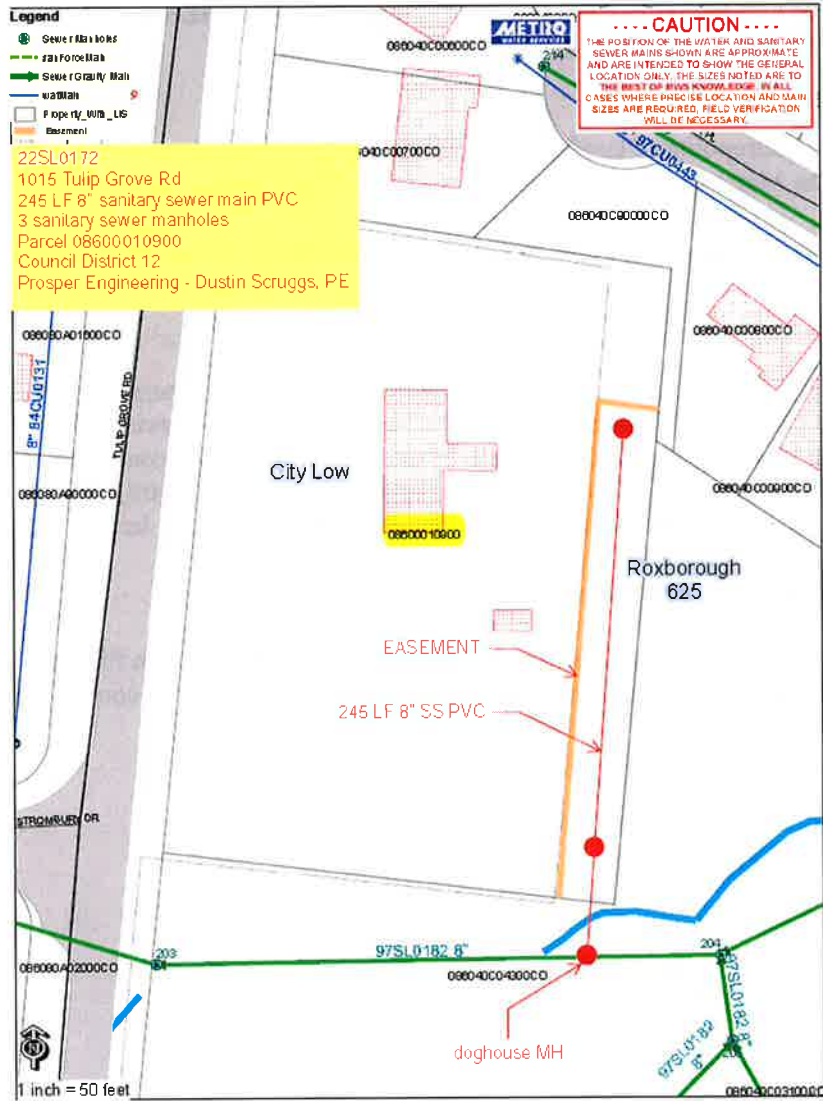
Sincerely,

A handwritten signature in blue ink that reads "Lisa Milligan".




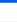

Lisa Milligan
Assistant Director Land Development
Metro Planning Department
cc: *Metro Clerk*

**Re: 1015 Tulip Grove Road
Planning Commission Mandatory Referral 2024M-055ES-001
Council District #12 Erin Evans, Council Member**

A request for the acceptance of approximately 245 linear feet of eight-inch sanitary sewer main (PVC), three sanitary sewer manholes, and easement to serve the development at 1015 Tulip Grove Road.

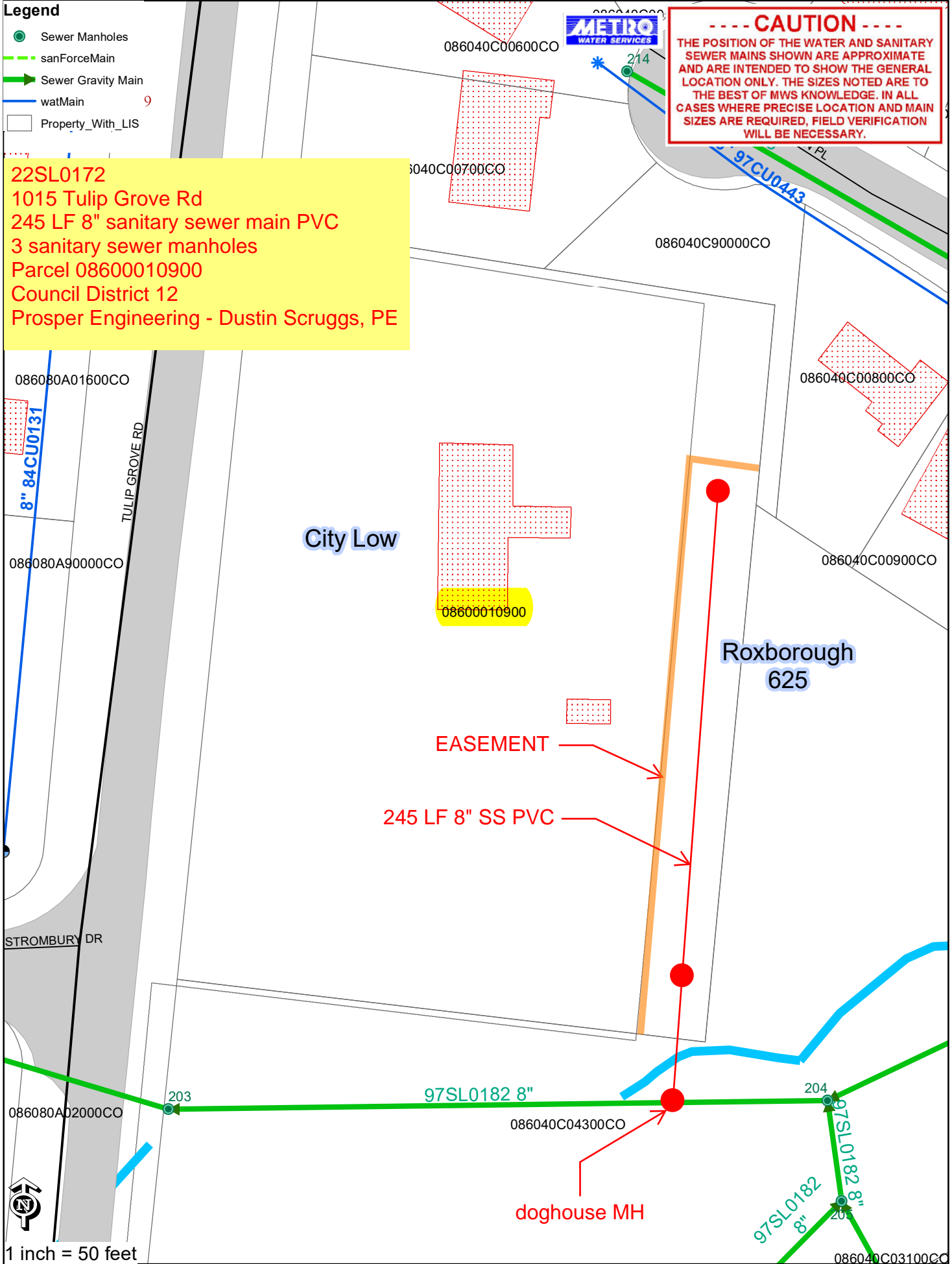


Legend

-  Sewer Manholes
-  sanForceMain
-  Sewer Gravity Main
-  watMain
-  Property_With_LIS

22SL0172
 1015 Tulip Grove Rd
 245 LF 8" sanitary sewer main PVC
 3 sanitary sewer manholes
 Parcel 08600010900
 Council District 12
 Prosper Engineering - Dustin Scruggs, PE

----- CAUTION -----
 THE POSITION OF THE WATER AND SANITARY SEWER MAINS SHOWN ARE APPROXIMATE AND ARE INTENDED TO SHOW THE GENERAL LOCATION ONLY. THE SIZES NOTED ARE TO THE BEST OF MWS KNOWLEDGE. IN ALL CASES WHERE PRECISE LOCATION AND MAIN SIZES ARE REQUIRED, FIELD VERIFICATION WILL BE NECESSARY.



1 inch = 50 feet

086040C03100CO