

N A S H V I L L E
P L A N N I N G

February 5, 2024

To: Mike Atchison Metro Water Services

Re: **1612B County Hospital Road**
Planning Commission Mandatory Referral 2024M-027ES-001
Council District #01 Joy Kimbrough, Council Member

On behalf of the Metropolitan Planning Commission, the following item, referred to the Commission as required by the Metro Charter, has been recommended for *approval* to the Metropolitan Council:

A request for the acceptance of one sanitary sewer manhole to serve the development at 1612 B County Hospital Road.

The relevant Metro agencies (Metro Parks, Metro Public Works, Metro Water Services, Metro Emergency Communications, the Nashville Electric Service, Metro Finance – Public Property and the Metro Historical Commission) have reviewed the proposal and concur in the recommendation for approval. This request must be approved by the Metro Council to become effective. A sketch showing the location of the request is attached to this letter.

Conditions that apply to this approval: none

This recommendation for approval is given as set forth in the Metropolitan Planning Commission Rules and Procedures. If you have any questions about this matter, please contact Delilah Rhodes at Delilah.Rhodes@nashville.gov or 615-862-7208

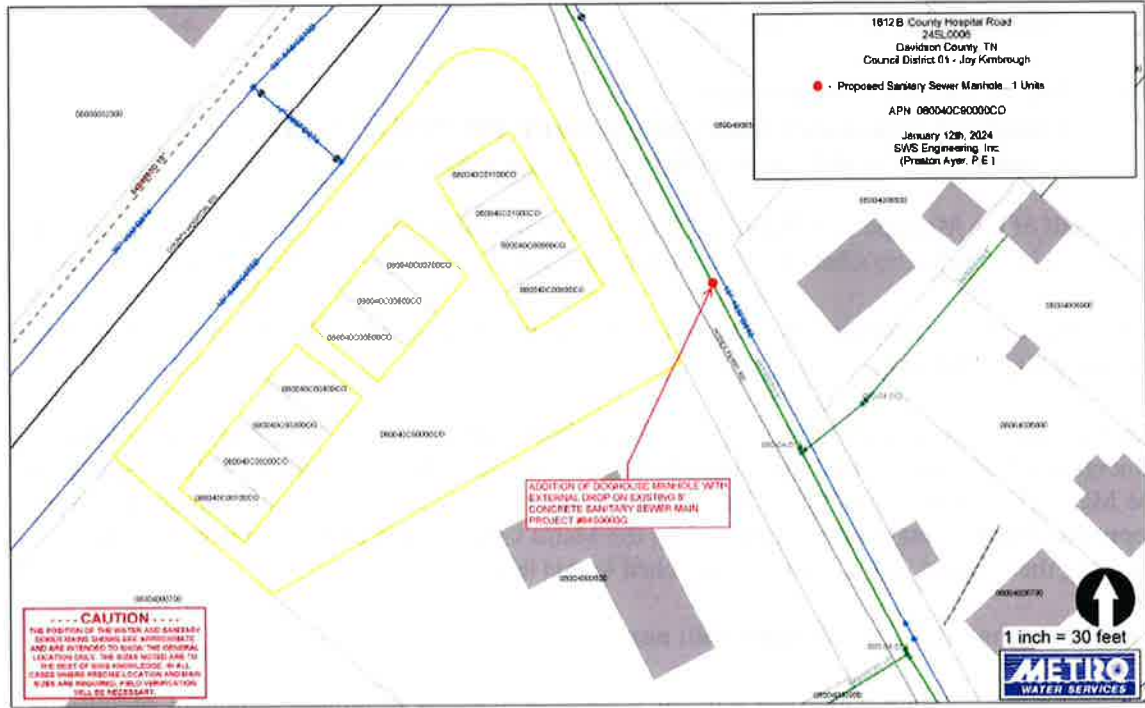
Sincerely,



Lisa Milligan
Assistant Director Land Development
Metro Planning Department
cc: *Metro Clerk*

**Re: 1612B County Hospital Road
Planning Commission Mandatory Referral 2024M-027ES-001
Council District #01 Joy Kimbrough, Council Member**

A request for the acceptance of one sanitary sewer manhole to serve the development at 1612 B County Hospital Road.

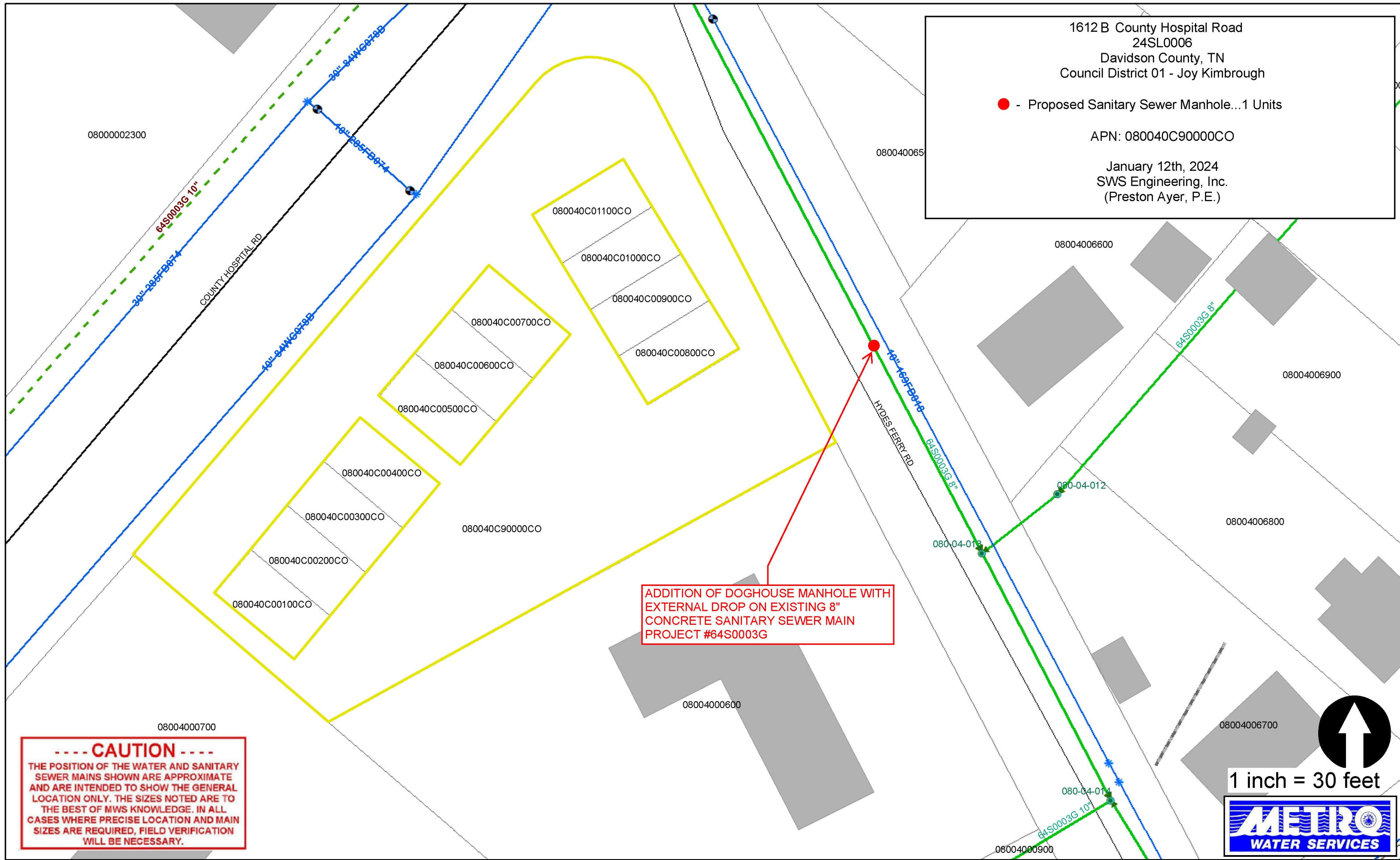


1612 B County Hospital Road
 24SL0006
 Davidson County, TN
 Council District 01 - Joy Kimbrough

● - Proposed Sanitary Sewer Manhole...1 Units

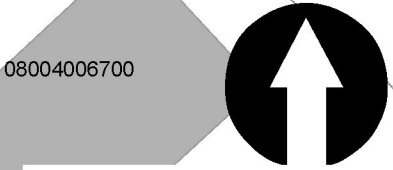
APN: 080040C90000CO

January 12th, 2024
 SWS Engineering, Inc.
 (Preston Ayer, P.E.)



ADDITION OF DOGHOUSE MANHOLE WITH
 EXTERNAL DROP ON EXISTING 8"
 CONCRETE SANITARY SEWER MAIN
 PROJECT #64S0003G

----- CAUTION -----
 THE POSITION OF THE WATER AND SANITARY
 SEWER MAINS SHOWN ARE APPROXIMATE
 AND ARE INTENDED TO SHOW THE GENERAL
 LOCATION ONLY. THE SIZES NOTED ARE TO
 THE BEST OF MWS KNOWLEDGE. IN ALL
 CASES WHERE PRECISE LOCATION AND MAIN
 SIZES ARE REQUIRED, FIELD VERIFICATION
 WILL BE NECESSARY.



1 inch = 30 feet

