



**METROPOLITAN GOVERNMENT OF NASHVILLE
AND DAVIDSON COUNTY**

Metro Office Building
800 President Ronald Reagan Way
P.O. Box 196300
Nashville, TN 37219-6300

July 26, 2023

To: Mike Atchison Metro Water Services

**Re: CANEBRAKE SUBDIVISION - PHASE 1B
Planning Commission Mandatory Referral 2023M-113ES-001**

On behalf of the Metropolitan Planning Commission, the following item, referred to the Commission as required by the Metro Charter, has been recommended for *approval* to the Metropolitan Council:

A request for the acceptance of approximately 1,400 linear feet of eight-inch sanitary sewer main (PVC), nine sanitary sewer manholes, and associated easements to serve Phase 1B of the Canebrake Subdivision development.

The relevant Metro agencies (Metro Parks, Metro Public Works, Metro Water Services, Metro Emergency Communications, the Nashville Electric Service, Metro Finance – Public Property and the Metro Historical Commission) have reviewed the proposal and concur in the recommendation for approval. This request must be approved by the Metro Council to become effective. A sketch showing the location of the request is attached to this letter.

Conditions that apply to this approval: none

This recommendation for approval is given as set forth in the Metropolitan Planning Commission Rules and Procedures. If you have any questions about this matter, please contact Delilah Rhodes at delilah.rhodes@nashville.gov or 615-862-7208.

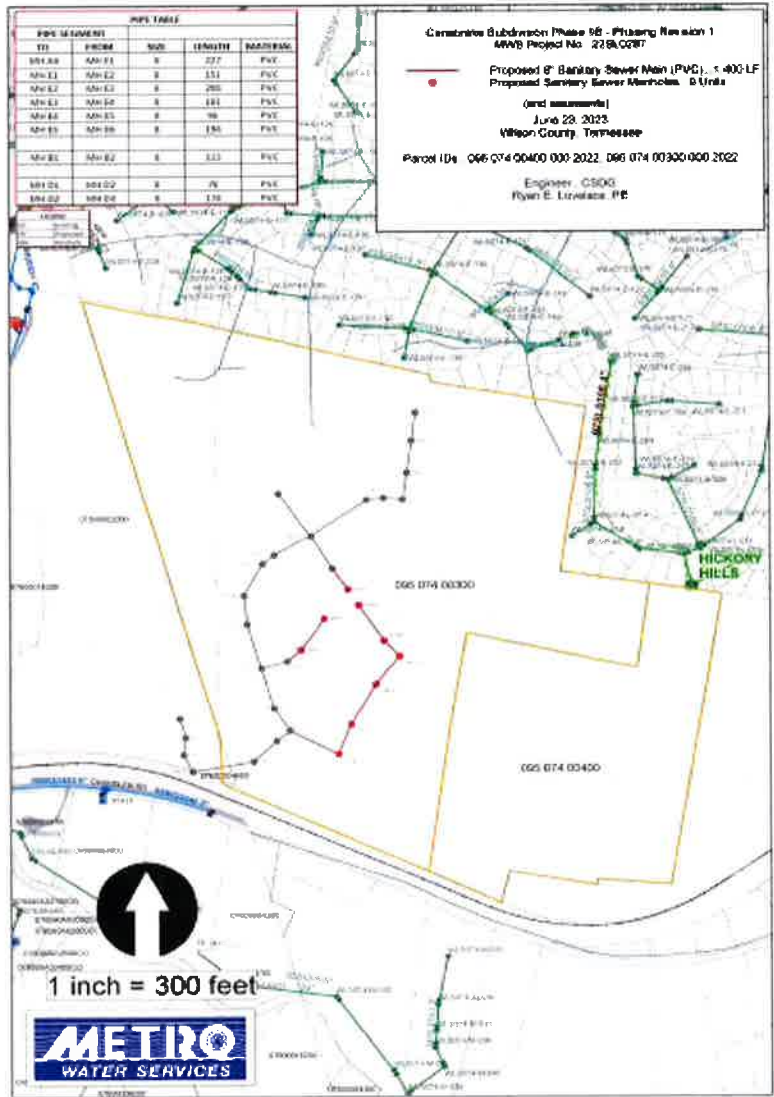
Sincerely,

A handwritten signature in blue ink, appearing to read "Lisa Milligan".

Lisa Milligan
Land Development Manager
Metro Planning Department
cc: Metro Clerk

Re: CANEBRAKE SUBDIVISION - PHASE 1B
Planning Commission Mandatory Referral # 2023M-113ES-001

A request for the acceptance of approximately 1,400 linear feet of eight-inch sanitary sewer main (PVC), nine sanitary sewer manholes, and associated easements to serve Phase 1B of the Canebrake Subdivision development.



PIPE TABLE				
PIPE SEGMENT		SIZE	LENGTH	MATERIAL
TO	FROM			
MH A6	MH E1	8	227	PVC
MH E1	MH E2	8	151	PVC
MH E2	MH E3	8	208	PVC
MH E3	MH E4	8	161	PVC
MH E4	MH E5	8	96	PVC
MH E5	MH E6	8	194	PVC
MH B1	MH B2	8	113	PVC
MH D1	MH D2	8	76	PVC
MH D2	MH D3	8	174	PVC

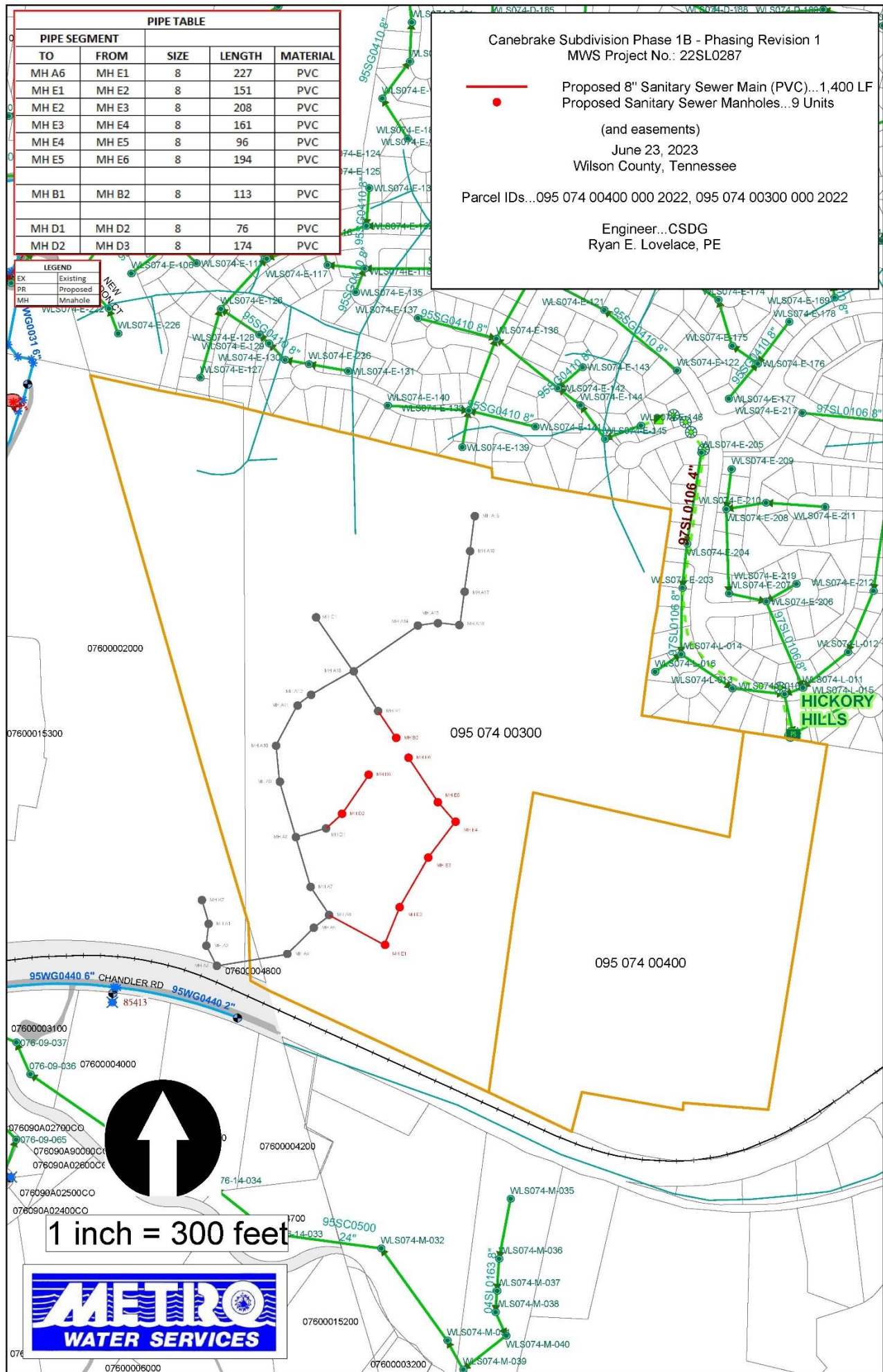
Canebrake Subdivision Phase 1B - Phasing Revision 1
 MWS Project No.: 22SL0287

Proposed 8" Sanitary Sewer Main (PVC)...1,400 LF
 Proposed Sanitary Sewer Manholes...9 Units
 (and easements)
 June 23, 2023
 Wilson County, Tennessee

Parcel IDs...095 074 00400 000 2022, 095 074 00300 000 2022

Engineer...CSDG
 Ryan E. Lovelace, PE

LEGEND	
EX	Existing
PR	Proposed
MH	Manhole



1 inch = 300 feet

