

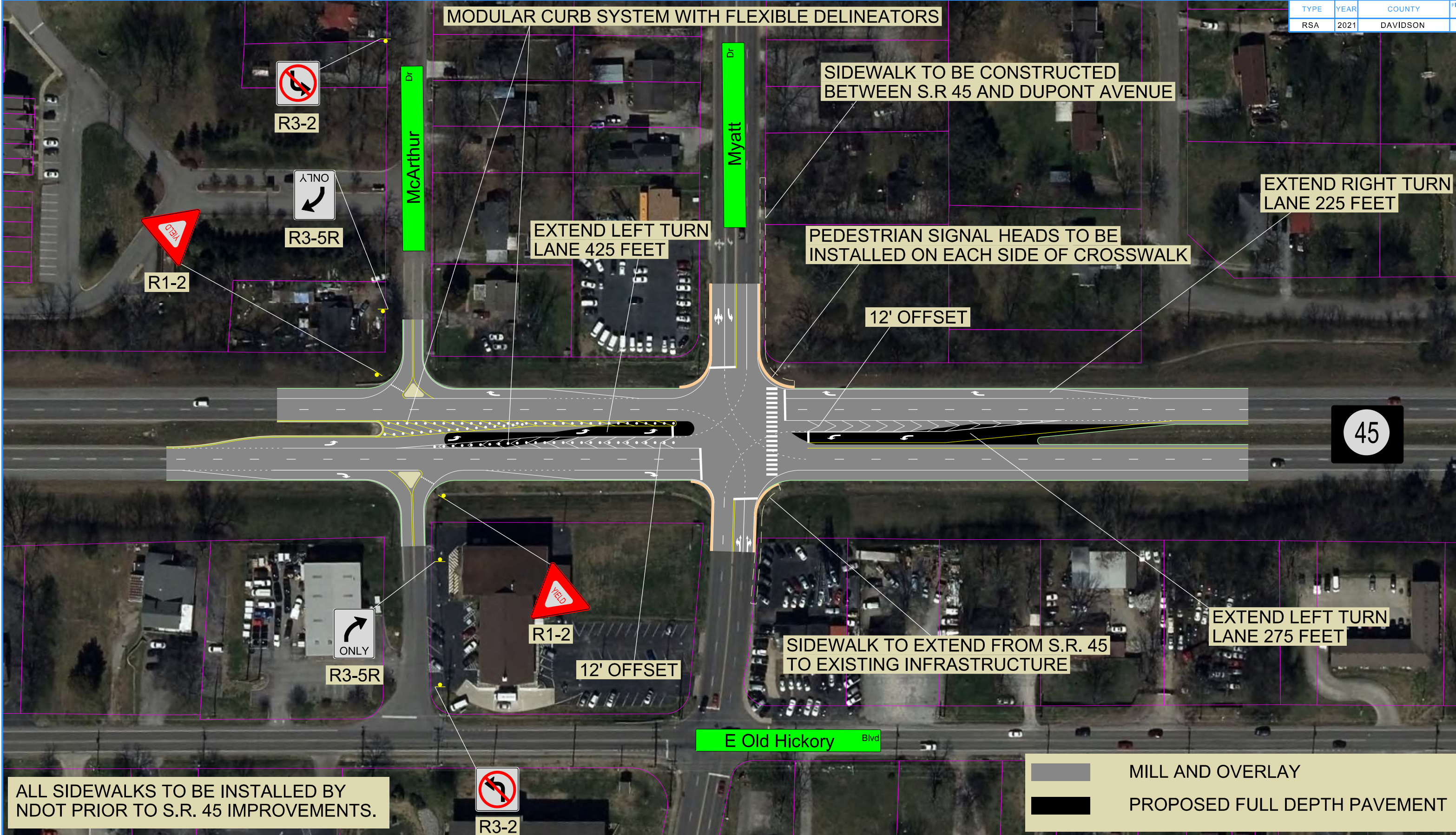
Sources: Esri, HERE, Garmin, USGS, Intermap, INCREMENT P, NRCan, Esri Japan, METI, Esri China (Hong Kong), Esri Korea, Esri (Thailand), NGCC, © OpenStreetMap contributors, and the GIS User Community



LOCATION MAP

Road Safety Audit SR-45 LM 8.390 to LM 8.490 Davidson County	
PIN: 131336.00	
DRAWN BY: DAU	DATE: 9/24/2021

TYPE	YEAR	COUNTY	FIGURE NO.
RSA	2021	DAVIDSON	1



ROAD SAFETY AUDIT

STATE ROUTE 45
DAVIDSON COUNTY

STATE OF TENNESSEE
DEPARTMENT OF TRANSPORTATION
S.T.I.D.

FIGURE 1
STATE ROUTE 45

8/10/2021 2:29:17 PM X:\Projects\Davidson\SR 45\Old Hickory Blvd and Myatt Dr\MicroStation\Offset Turn Option - Extended Storage.dgn