



**METROPOLITAN GOVERNMENT
OF NASHVILLE AND DAVIDSON COUNTY**

Planning Department
Metro Office Building
800 Second Avenue South
Nashville, Tennessee 37201

March 18, 2021

To: Mike Atchison, Metro Water Services

Re: 2208 Eastland Avenue
Planning Commission Mandatory Referral #2021M-025ES-001
Council District #06 – Brett Withers, Council Member

On behalf of the Metropolitan Planning Commission, the following item, referred to the Commission as required by the Metro Charter, has been recommended for *approval* to the Metropolitan Council:

A request for the abandonment of approximately 299 linear feet of 8-inch sanitary sewer main (PVC), one sanitary sewer manhole and easements, and the acceptance of approximately 615 linear feet of 8-inch sanitary sewer main (PVC), 137 linear feet of 8-inch sanitary sewer main (DIP), nine sanitary sewer manholes, 527 linear feet of 8-inch water main (DIP), one fire hydrant assembly and easements (see sketch for details) to serve the 2208 Eastland Ave SP development (MWS proj. nos. 20-SL-211 and 20-WL-105).

The relevant Metro agencies (Metro Parks, Metro Public Works, Metro Water Services, Metro Emergency Communications, the Nashville Electric Service, Metro Finance – Public Property and the Metro Historical Commission) have reviewed the proposal and concur in the recommendation for approval. This request must be approved by the Metro Council to become effective. A sketch showing the location of the request is attached to this letter.

Conditions that apply to this approval: None.

This recommendation for approval is given as set forth in the Metropolitan Planning Commission Rules and Procedures. If you have any questions about this matter, please contact Sharon O'Conner at Sharon.oconner@nashville.gov or 615-862-7208.

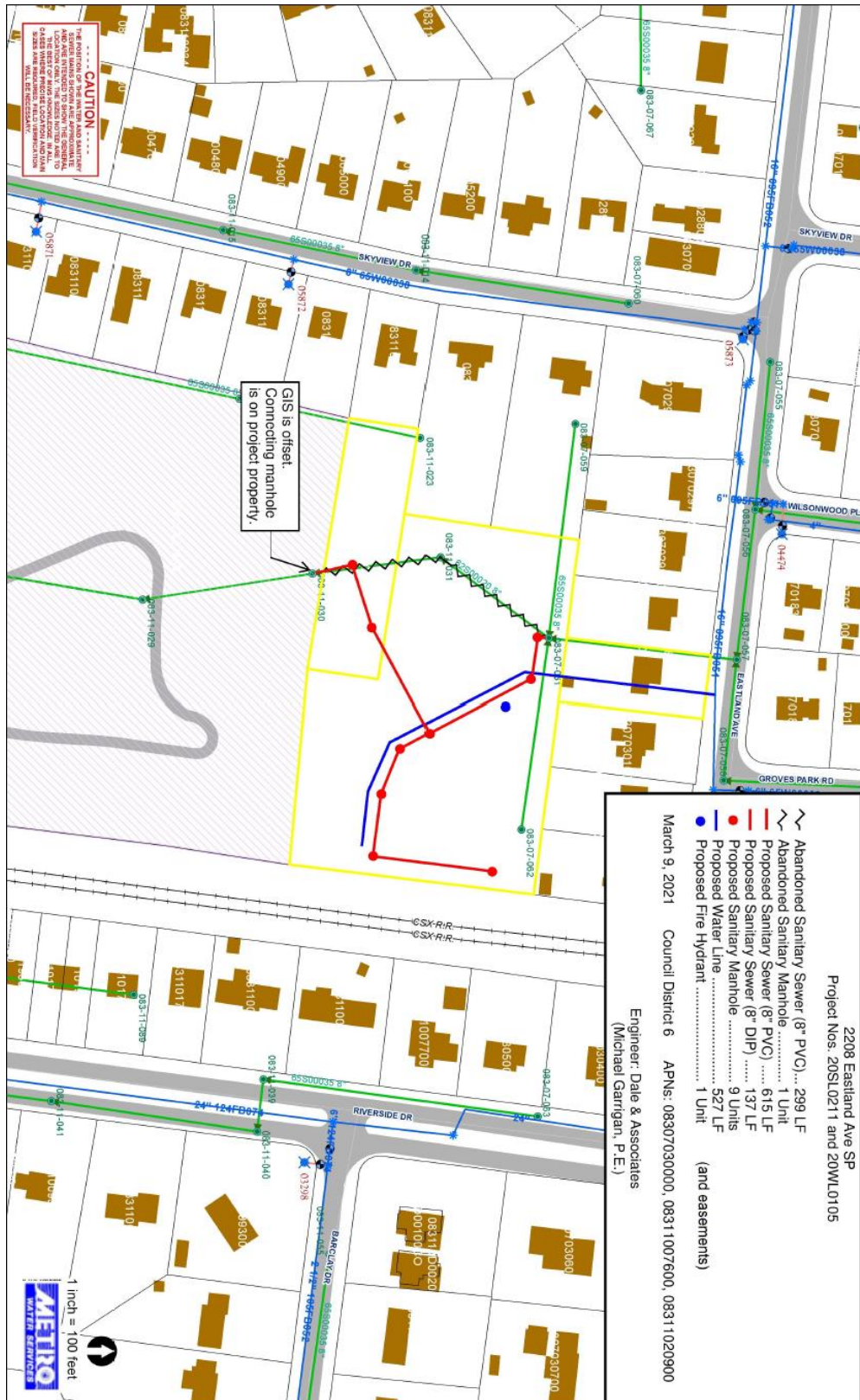
Sincerely,

A handwritten signature in cursive script that reads "Robert Leeman".








Robert Leeman, AICP
Deputy Director
Metro Planning Department
cc: Metro Clerk, Elizabeth Waites

Re: 2208 Eastland Avenue
Planning Commission Mandatory Referral #2021M-025ES-001
 Council District #06 – Brett Withers, Council Member

A request for the abandonment of approximately 299 linear feet of 8-inch sanitary sewer main (PVC), one sanitary sewer manhole and easements, and the acceptance of approximately 615 linear feet of 8-inch sanitary sewer main (PVC), 137 linear feet of 8-inch sanitary sewer main (DIP), nine sanitary sewer manholes, 527 linear feet of 8-inch water main (DIP), one fire hydrant assembly and easements (see sketch for details) to serve the 2208 Eastland Ave SP development (MWS proj. nos. 20-SL-211 and 20-WL-105).

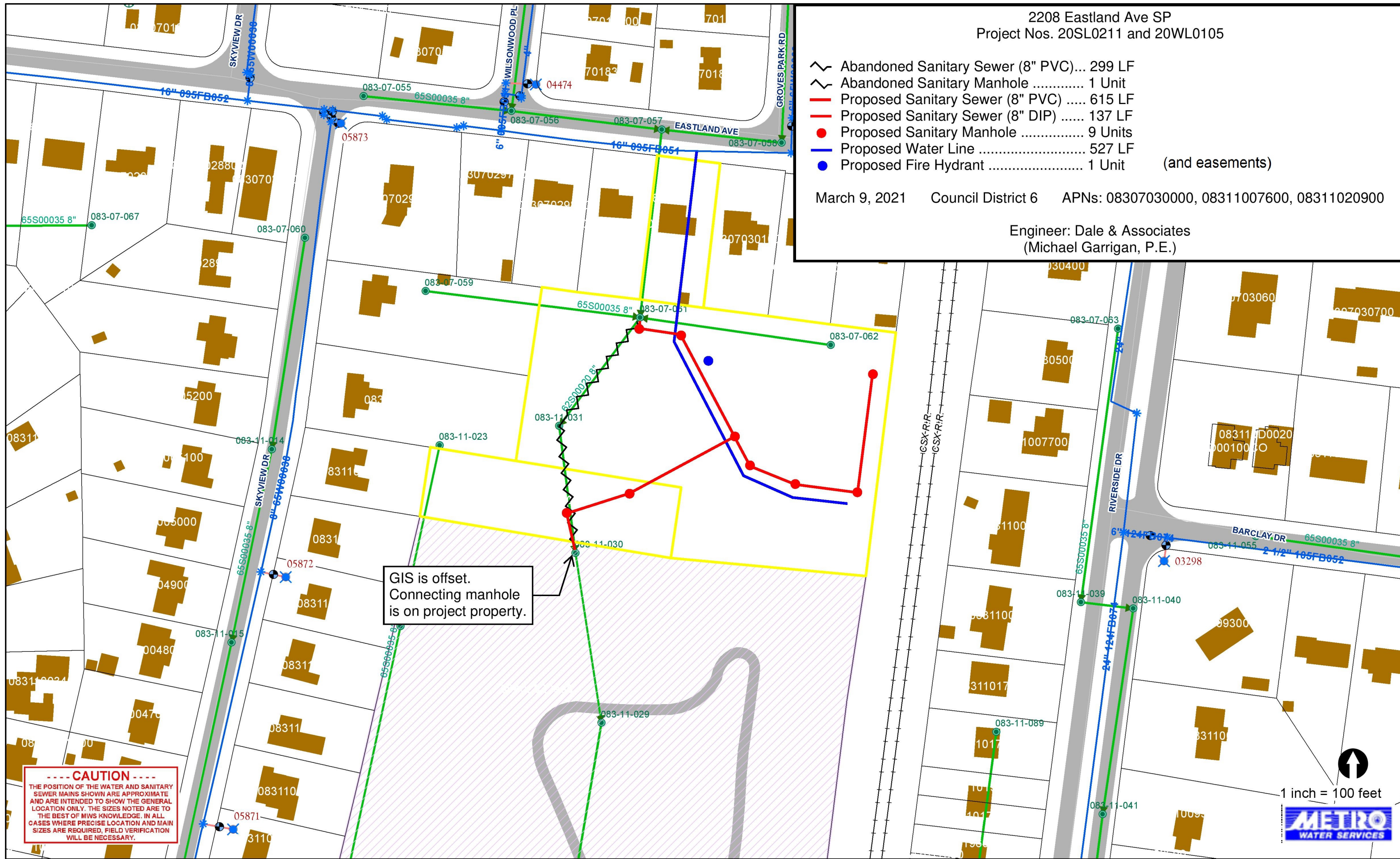


2208 Eastland Ave SP
Project Nos. 20SL0211 and 20WL0105

-  Abandoned Sanitary Sewer (8" PVC)... 299 LF
-  Abandoned Sanitary Manhole 1 Unit
-  Proposed Sanitary Sewer (8" PVC) 615 LF
-  Proposed Sanitary Sewer (8" DIP) 137 LF
-  Proposed Sanitary Manhole 9 Units
-  Proposed Water Line 527 LF
-  Proposed Fire Hydrant 1 Unit (and easements)

March 9, 2021 Council District 6 APNs: 08307030000, 08311007600, 08311020900

Engineer: Dale & Associates
(Michael Garrigan, P.E.)



GIS is offset.
Connecting manhole
is on project property.

----- CAUTION -----
 THE POSITION OF THE WATER AND SANITARY SEWER MAINS SHOWN ARE APPROXIMATE AND ARE INTENDED TO SHOW THE GENERAL LOCATION ONLY. THE SIZES NOTED ARE TO THE BEST OF MWS KNOWLEDGE. IN ALL CASES WHERE PRECISE LOCATION AND MAIN SIZES ARE REQUIRED, FIELD VERIFICATION WILL BE NECESSARY.

1 inch = 100 feet
