

FAIN STREET SEWER PROJECT**No. 22-SG-239**

<u>Address</u>	<u>Map/Parcels</u>	<u>Property Owners</u>
113 Fain Street	09316032700	Jeffrey C. Strachan
115 Fain Street	09316032800	Warren A. Sawyers Living Trust
117 Fain Street	09316032900	Jim Sweeney Construction
119 Fain Street	09316033000	Allegra Walker & Carey Shawnell Birdine
121 Fain Street	09316033100	Earl J. Brooks & wife, Frances Brooks
123 Fain Street	09316033200	Carolyn Brooks
125 Fain Street	09316033300	The O'Malley Family Trust 1
127 Fain Street	09316033400	Housing Quick Fix Associates, LLC
Unnumbered J C Napier Street	09316044800	Yellow Ball Development, GP
112 J C Napier Street	09316034000	MH Development, LLC
114 J C Napier Street	09316033900	Yellow Ball Development, GP
116 J C Napier Street	09316032901	Yellow Ball Development, GP
118 J C Napier Street	09316033800	MH Development, LLC
124 J C Napier Street	09316033700	Leroy Green
126 J C Napier Street	09316033600	Sovereign Investments, LLC



**METROPOLITAN GOVERNMENT OF NASHVILLE
AND DAVIDSON COUNTY**

Metro Office Building
800 President Ronald Reagan Way
P.O. Box 196300
Nashville, TN 37219-6300

March 10, 2023

To: Mike Atchison Metro Water Services

**Re: FAIN STREET SEWER EXTENSION
Planning Commission Mandatory Referral # 2023M-038ES-001
Council District #19 Freddie O'Connell, Council Member**

On behalf of the Metropolitan Planning Commission, the following item, referred to the Commission as required by the Metro Charter, has been recommended for *approval* to the Metropolitan Council:

A request for the construction and acceptance of approximately 290 linear feet of 8-inch sanitary sewer mains (PVC), four sanitary sewer manholes, permanent easements, and temporary construction easements to serve these properties.

The relevant Metro agencies (Metro Parks, Metro Public Works, Metro Water Services, Metro Emergency Communications, the Nashville Electric Service, Metro Finance – Public Property and the Metro Historical Commission) have reviewed the proposal and concur in the recommendation for approval. This request must be approved by the Metro Council to become effective. A sketch showing the location of the request is attached to this letter.

Conditions that apply to this approval: none

This recommendation for approval is given as set forth in the Metropolitan Planning Commission Rules and Procedures. If you have any questions about this matter, please contact Delilah Rhodes at delilah.rhodes@nashville.gov or 615-862-7208.

Sincerely,

A handwritten signature in blue ink, appearing to read 'Lisa Milligan'.

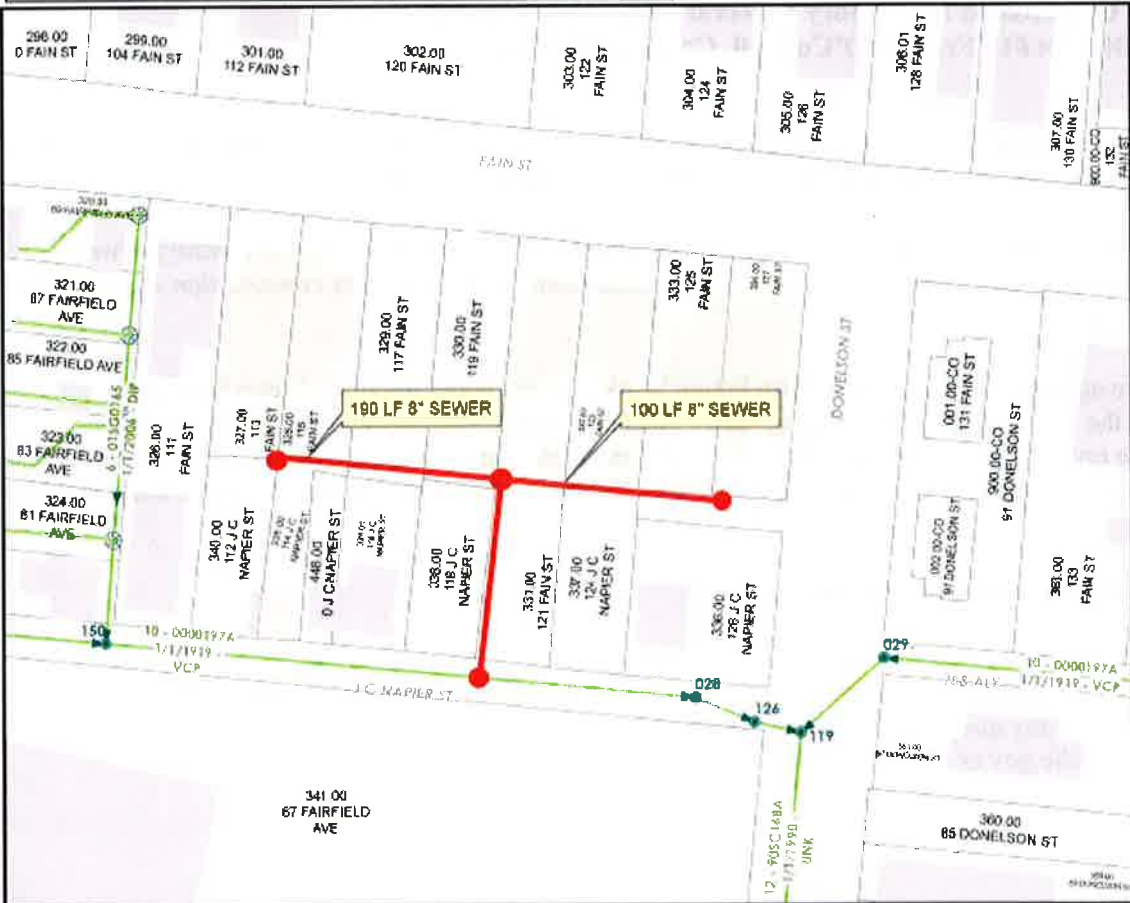
Lisa Milligan
Land Development Manager
Metro Planning Department
cc: Metro Clerk

Re: FAIN STREET SEWER EXTENSION
Planning Commission Mandatory Referral # 2023M-038ES-001
Council District #19 Freddie O'Connell, Council Member

A request for the construction and acceptance of approximately 290 linear feet of 8-inch sanitary sewer mains (PVC), four sanitary sewer manholes, permanent easements, and temporary construction easements to serve these properties.

FAIN STREET SEWER EXTENSION PVC SEWER
 22SG0238
 COUNCIL DISTRICT 19, FREDDIE O'CONNELL (AND EASEMENTS)
 APPROX 290 LF OF 8" PVC SEWER 4 MANHOLES

N
 Not to Scale
 Date: 2/16/2023
METRO
 WATER SERVICES
 ... CAUTION ...
 THE POSITION OF THE
 WATER AND SANITARY
 SEWER MAINS SHOWN
 ARE APPROXIMATE AND
 ARE INTENDED TO
 SHOW THE GENERAL
 LOCATIONS ONLY.
 THE SIZES NOTED ARE
 TO THE BEST OF OUR
 KNOWLEDGE. IN ALL
 CASES WHERE PRECISE
 LOCATION AND MAIN
 SIZES ARE REQUIRED,
 FIELD SURVEYATION
 WILL BE NECESSARY.



Legend

- Proposed Easement Property
- Boundary, Owner Mark
- Manhole
- Sewer Line
- Property with L.S.

FAIN STREET SEWER EXTENSION PVC SEWER

22SG0239

COUNCIL DISTRICT 19, FREDDIE O'CONNELL (AND EASEMENTS)

APPROX 290 LF OF 8" PVC SEWER 4 MANHOLES

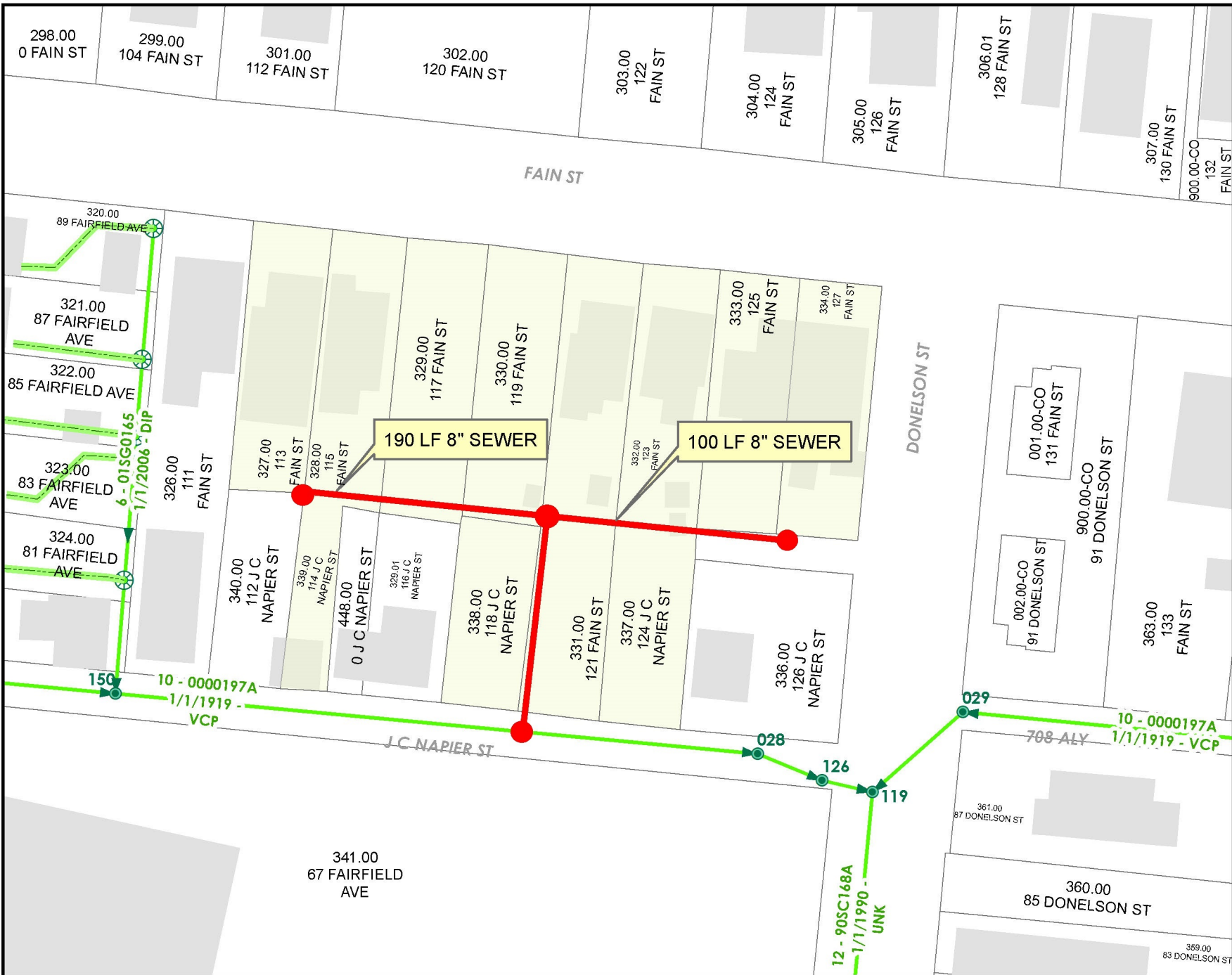


Not to Scale

Date: 2/16/2023



--- CAUTION ---
THE POSITION OF THE WATER AND SANITARY SEWER MAINS SHOWN ARE APPROXIMATE AND ARE INTENDED TO SHOW THE GENERAL LOCATIONS ONLY. THE SIZES NOTED ARE TO THE BEST OF MWS KNOWLEDGE. IN ALL CASES WHERE PRECISE LOCATION AND MAIN SIZES ARE REQUIRED, FIELD VERIFICATION WILL BE NECESSARY.



Legend

- Easement Requested Property
- Sanitary Sewer Main
- In Service
- Property with LIS